

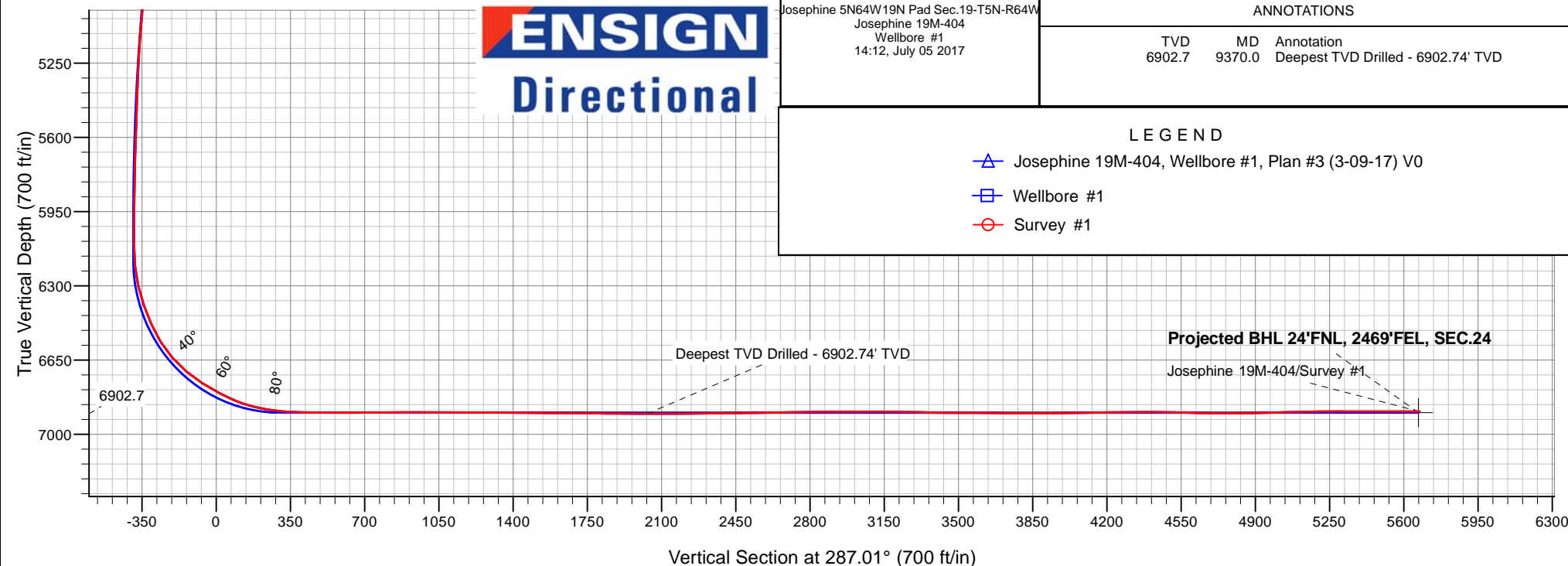
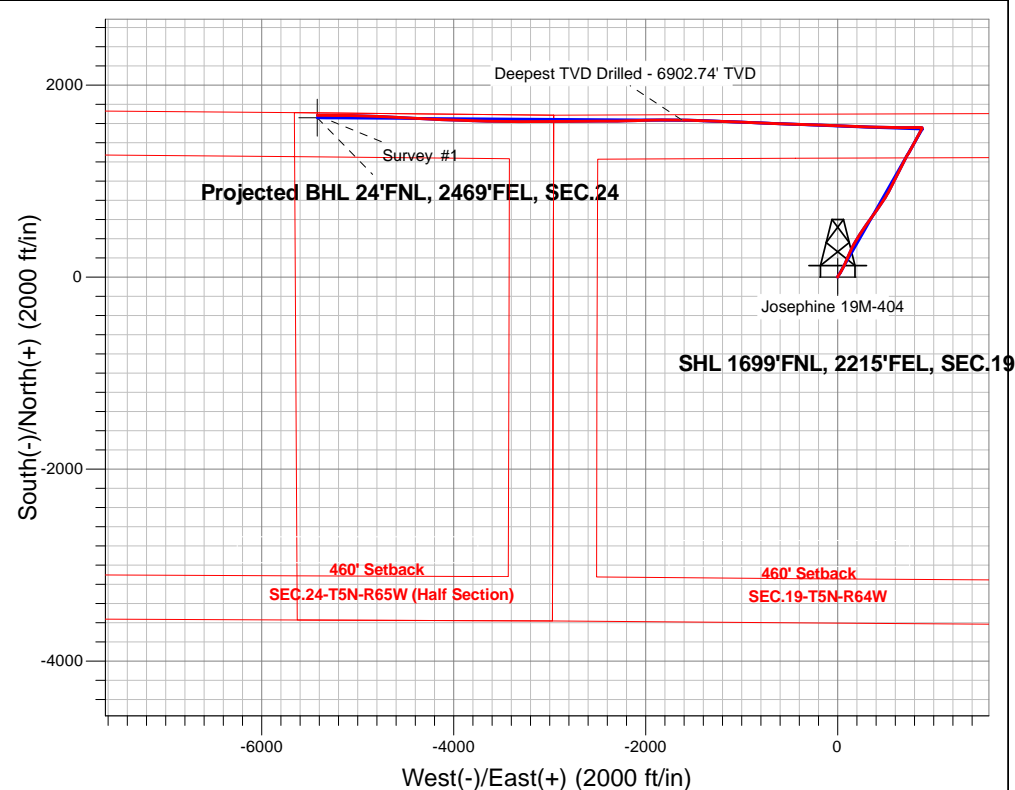
# PDC Energy Inc. DJ Basin

Well Name: **Josephine 19M-404**

Surface Location: Josephine 5N64W19N Pad Sec.19-T5N-R64W  
 North American Datum 1983 , US State Plane 1983, Colorado Northern Zone  
 Ground Elevation: 4626.0  
 +N/-S+E/-W Northing Easting Latitude Longitude Slot  
 0.0 0.0385201.67 3253128.43 40.387220 -104.591290  
 Original Well Elev WELL @ 4649.0ft (Original Well Elev)

## FINAL SURVEY

**Projected Bottom Hole Location**  
**13,167'MD 6892'TVD 1684'N & 5419'W of SHL**  
**90.3 degree Incl @ 271.1 degree AZM**



Josephine 5N64W19N Pad Sec.19-T5N-R64W  
 Josephine 19M-404  
 Wellbore #1  
 14:12, July 05 2017

### ANNOTATIONS

TVD	MD	Annotation
6902.7	9370.0	Deepest TVD Drilled - 6902.74' TVD

### LEGEND

- Josephine 19M-404, Wellbore #1, Plan #3 (3-09-17) V0
- Wellbore #1
- Survey #1

Vertical Section at 287.01° (700 ft/in)



## **PDC Energy Inc. DJ Basin**

**SEC.19-T5N-R64W**

**Josephine 5N64W19N Pad Sec.19-T5N-R64W**

**Josephine 19M-404**

**Wellbore #1**

**Survey: Survey #1**

## **Standard Survey Report**

**05 July, 2017**

<b>Company:</b>	PDC Energy Inc. DJ Basin	<b>Local Co-ordinate Reference:</b>	Well Josephine 19M-404
<b>Project:</b>	SEC.19-T5N-R64W	<b>TVD Reference:</b>	WELL @ 4649.0ft (Original Well Elev)
<b>Site:</b>	Josephine 5N64W19N Pad Sec.19-T5N-R64W	<b>MD Reference:</b>	WELL @ 4649.0ft (Original Well Elev)
<b>Well:</b>	Josephine 19M-404	<b>North Reference:</b>	True
<b>Wellbore:</b>	Wellbore #1	<b>Survey Calculation Method:</b>	Minimum Curvature
<b>Design:</b>	Wellbore #1	<b>Database:</b>	US_EDM

<b>Project</b>	SEC.19-T5N-R64W		
<b>Map System:</b>	US State Plane 1983	<b>System Datum:</b>	Mean Sea Level
<b>Geo Datum:</b>	North American Datum 1983		Using Well Reference Point
<b>Map Zone:</b>	Colorado Northern Zone		Using geodetic scale factor

Site		Josephine 5N64W19N Pad Sec.19-T5N-R64W			
Site Position:		Northing:	1,385,202.34 usft	Latitude:	40.387220
From:	Lat/Long	Easting:	3,253,192.49 usft	Longitude:	-104.591060
Position Uncertainty:	0.0 ft	Slot Radius:	13-3/16 "	Grid Convergence:	0.59 °

Well	Josephine 19M-404					
Well Position	+N/-S	0.0 ft	Northing:	1,385,201.67 usft	Latitude:	40.387220
	+E/-W	0.0 ft	Easting:	3,253,128.43 usft	Longitude:	-104.591290
Position Uncertainty		0.0 ft	Wellhead Elevation:	0.0 ft	Ground Level:	4,626.0 ft

<b>Wellbore</b>	Wellbore #1				
<b>Magnetics</b>	<b>Model Name</b>	<b>Sample Date</b>	<b>Declination (°)</b>	<b>Dip Angle (°)</b>	<b>Field Strength (nT)</b>
	IGRF2010	3/9/2017	8.00	66.87	52,540

<b>Design</b>	Wellbore #1				
<b>Audit Notes:</b>					
<b>Version:</b>	1.0	<b>Phase:</b>	ACTUAL	<b>Tie On Depth:</b>	0.0
<b>Vertical Section:</b>	<b>Depth From (TVD) (ft)</b>	<b>+N/-S (ft)</b>	<b>+E/-W (ft)</b>	<b>Direction (°)</b>	
	0.0	0.0	0.0	287.01	

<b>Survey Program</b>	<b>Date</b>	7/5/2017			
<b>From (ft)</b>	<b>To (ft)</b>	<b>Survey (Wellbore)</b>	<b>Tool Name</b>	<b>Description</b>	
159.0	13,167.0	Survey #1 (Wellbore #1)	MWD	MWD - Standard	

<b>Survey</b>										
<b>Measured Depth (ft)</b>	<b>Inclination (°)</b>	<b>Azimuth (°)</b>	<b>Vertical Depth (ft)</b>	<b>+N/-S (ft)</b>	<b>+E/-W (ft)</b>	<b>Vertical Section (ft)</b>	<b>Dogleg Rate (°/100usft)</b>	<b>Build Rate (°/100usft)</b>	<b>Turn Rate (°/100usft)</b>	
0.0	0.00	0.00	0.0	0.0	0.0	0.0	0.00	0.00	0.00	
159.0	0.20	239.90	159.0	-0.1	-0.2	0.2	0.13	0.13	0.00	
255.0	1.20	26.10	255.0	0.7	0.1	0.1	1.43	1.04	152.29	
351.0	3.80	26.60	350.9	4.4	1.9	-0.5	2.71	2.71	0.52	
446.0	5.40	32.10	445.6	11.0	5.7	-2.2	1.75	1.68	5.79	
542.0	7.40	33.00	541.0	20.0	11.5	-5.1	2.09	2.08	0.94	
638.0	9.00	32.30	636.0	31.6	18.9	-8.8	1.67	1.67	-0.73	
734.0	11.30	31.90	730.5	45.9	27.8	-13.2	2.40	2.40	-0.42	
829.0	13.20	31.40	823.3	63.1	38.4	-18.3	2.00	2.00	-0.53	
924.0	14.20	28.20	915.6	82.6	49.6	-23.2	1.32	1.05	-3.37	

<b>Company:</b>	PDC Energy Inc. DJ Basin	<b>Local Co-ordinate Reference:</b>	Well Josephine 19M-404
<b>Project:</b>	SEC.19-T5N-R64W	<b>TVD Reference:</b>	WELL @ 4649.0ft (Original Well Elev)
<b>Site:</b>	Josephine 5N64W19N Pad Sec.19-T5N-R64W	<b>MD Reference:</b>	WELL @ 4649.0ft (Original Well Elev)
<b>Well:</b>	Josephine 19M-404	<b>North Reference:</b>	True
<b>Wellbore:</b>	Wellbore #1	<b>Survey Calculation Method:</b>	Minimum Curvature
<b>Design:</b>	Wellbore #1	<b>Database:</b>	US_EDM

Survey									
Measured Depth (ft)	Inclination (°)	Azimuth (°)	Vertical Depth (ft)	+N/-S (ft)	+E/-W (ft)	Vertical Section (ft)	Dogleg Rate (°/100usft)	Build Rate (°/100usft)	Turn Rate (°/100usft)
1,020.0	15.70	25.90	1,008.4	104.7	60.8	-27.5	1.68	1.56	-2.40
1,116.0	16.00	23.80	1,100.7	128.5	71.8	-31.1	0.67	0.31	-2.19
1,212.0	16.30	22.40	1,192.9	153.0	82.3	-33.9	0.51	0.31	-1.46
1,307.0	17.30	24.20	1,283.9	178.2	93.2	-37.0	1.19	1.05	1.89
1,403.0	19.50	24.20	1,375.0	205.9	105.6	-40.7	2.29	2.29	0.00
1,498.0	19.10	25.20	1,464.6	234.4	118.7	-44.9	0.55	-0.42	1.05
1,620.0	17.90	21.00	1,580.3	270.0	133.9	-49.1	1.47	-0.98	-3.44
1,786.0	18.40	28.90	1,738.1	316.7	155.7	-56.3	1.51	0.30	4.76
1,882.0	19.30	31.20	1,828.9	343.5	171.3	-63.3	1.22	0.94	2.40
1,978.0	19.00	29.40	1,919.6	370.7	187.2	-70.5	0.69	-0.31	-1.88
2,074.0	17.90	28.00	2,010.7	397.4	201.8	-76.7	1.24	-1.15	-1.46
2,170.0	20.00	32.60	2,101.5	424.2	217.5	-83.9	2.68	2.19	4.79
2,265.0	20.90	31.40	2,190.5	452.4	235.1	-92.5	1.05	0.95	-1.26
2,360.0	21.30	35.40	2,279.1	480.9	253.9	-102.2	1.57	0.42	4.21
2,456.0	20.80	33.70	2,368.7	509.3	273.5	-112.5	0.82	-0.52	-1.77
2,552.0	22.10	37.20	2,458.1	537.9	293.9	-123.7	1.90	1.35	3.65
2,648.0	21.40	35.80	2,547.2	566.5	315.0	-135.6	0.91	-0.73	-1.46
2,743.0	23.70	36.80	2,635.0	595.8	336.6	-147.6	2.45	2.42	1.05
2,839.0	23.70	35.60	2,722.9	627.0	359.4	-160.3	0.50	0.00	-1.25
2,934.0	23.00	34.50	2,810.1	657.8	381.0	-171.9	0.87	-0.74	-1.16
3,030.0	22.10	32.80	2,898.8	688.4	401.4	-182.5	1.16	-0.94	-1.77
3,126.0	21.40	33.30	2,987.9	718.2	420.8	-192.3	0.75	-0.73	0.52
3,222.0	20.50	33.70	3,077.6	746.9	439.8	-202.1	0.95	-0.94	0.42
3,318.0	20.70	35.80	3,167.4	774.6	459.0	-212.4	0.80	0.21	2.19
3,413.0	20.70	33.80	3,256.3	802.2	478.2	-222.6	0.74	0.00	-2.11
3,509.0	19.20	32.30	3,346.5	829.6	496.1	-231.7	1.65	-1.56	-1.56
3,604.0	19.10	29.60	3,436.3	856.3	512.1	-239.2	0.94	-0.11	-2.84
3,700.0	19.60	31.20	3,526.9	883.8	528.2	-246.6	0.76	0.52	1.67
3,796.0	21.10	27.30	3,616.9	912.9	544.5	-253.6	2.11	1.56	-4.06
3,892.0	21.30	26.60	3,706.4	943.8	560.2	-259.6	0.34	0.21	-0.73
3,988.0	21.40	25.90	3,795.8	975.2	575.7	-265.2	0.29	0.10	-0.73
4,084.0	20.80	25.20	3,885.4	1,006.4	590.6	-270.3	0.68	-0.63	-0.73
4,180.0	20.60	28.40	3,975.2	1,036.6	605.8	-276.1	1.20	-0.21	3.33
4,275.0	21.70	27.30	4,063.8	1,067.0	621.9	-282.5	1.23	1.16	-1.16
4,371.0	20.30	25.80	4,153.4	1,097.7	637.2	-288.3	1.56	-1.46	-1.56
4,466.0	21.50	28.60	4,242.1	1,127.8	652.7	-294.3	1.64	1.26	2.95
4,561.0	20.10	25.80	4,330.9	1,157.8	668.2	-300.3	1.81	-1.47	-2.95
4,657.0	20.90	27.90	4,420.9	1,187.8	683.4	-306.0	1.13	0.83	2.19
4,752.0	19.60	25.90	4,510.0	1,217.1	698.3	-311.7	1.55	-1.37	-2.11
4,847.0	20.00	28.20	4,599.4	1,245.8	712.9	-317.3	0.92	0.42	2.42
4,943.0	21.50	31.20	4,689.2	1,275.3	729.8	-324.8	1.91	1.56	3.13
5,039.0	20.10	29.40	4,778.9	1,304.7	747.0	-332.7	1.60	-1.46	-1.88
5,135.0	19.00	27.90	4,869.4	1,332.9	762.4	-339.1	1.26	-1.15	-1.56
5,231.0	20.00	28.60	4,959.9	1,361.1	777.6	-345.4	1.07	1.04	0.73

<b>Company:</b>	PDC Energy Inc. DJ Basin	<b>Local Co-ordinate Reference:</b>	Well Josephine 19M-404
<b>Project:</b>	SEC.19-T5N-R64W	<b>TVD Reference:</b>	WELL @ 4649.0ft (Original Well Elev)
<b>Site:</b>	Josephine 5N64W19N Pad Sec.19-T5N-R64W	<b>MD Reference:</b>	WELL @ 4649.0ft (Original Well Elev)
<b>Well:</b>	Josephine 19M-404	<b>North Reference:</b>	True
<b>Wellbore:</b>	Wellbore #1	<b>Survey Calculation Method:</b>	Minimum Curvature
<b>Design:</b>	Wellbore #1	<b>Database:</b>	US_EDM

Survey									
Measured Depth (ft)	Inclination (°)	Azimuth (°)	Vertical Depth (ft)	+N/-S (ft)	+E/-W (ft)	Vertical Section (ft)	Dogleg Rate (°/100usft)	Build Rate (°/100usft)	Turn Rate (°/100usft)
5,326.0	19.70	31.40	5,049.2	1,389.1	793.7	-352.6	1.05	-0.32	2.95
5,422.0	18.00	29.80	5,140.1	1,415.7	809.5	-360.0	1.85	-1.77	-1.67
5,517.0	16.40	27.90	5,230.8	1,440.3	823.1	-365.7	1.78	-1.68	-2.00
5,613.0	14.90	25.40	5,323.2	1,463.5	834.7	-370.1	1.71	-1.56	-2.60
5,708.0	12.60	26.80	5,415.5	1,483.7	844.6	-373.6	2.45	-2.42	1.47
5,804.0	11.20	23.50	5,509.5	1,501.6	853.1	-376.5	1.62	-1.46	-3.44
5,900.0	9.40	29.80	5,603.9	1,517.0	860.7	-379.3	2.21	-1.88	6.56
5,995.0	8.40	29.60	5,697.8	1,529.8	868.0	-382.5	1.05	-1.05	-0.21
6,091.0	6.30	27.20	5,793.0	1,540.5	873.8	-385.0	2.21	-2.19	-2.50
6,187.0	4.00	25.90	5,888.6	1,548.2	877.7	-386.4	2.40	-2.40	-1.35
6,282.0	1.00	45.30	5,983.5	1,551.8	879.7	-387.3	3.24	-3.16	20.42
6,407.0	1.10	20.30	6,108.5	1,553.7	880.9	-387.9	0.37	0.08	-20.00
6,503.0	5.40	287.00	6,204.3	1,555.9	876.9	-383.4	5.80	4.48	-97.19
6,599.0	13.50	269.90	6,298.9	1,557.2	861.4	-368.2	8.84	8.44	-17.81
6,694.0	19.70	270.30	6,389.9	1,557.3	834.2	-342.2	6.53	6.53	0.42
6,790.0	25.10	269.60	6,478.7	1,557.2	797.7	-307.3	5.63	5.63	-0.73
6,885.0	32.40	269.70	6,561.9	1,556.9	752.0	-263.7	7.68	7.68	0.11
6,981.0	43.00	269.20	6,637.7	1,556.3	693.4	-207.8	11.05	11.04	-0.52
7,077.0	51.00	269.90	6,703.2	1,555.8	623.2	-140.9	8.35	8.33	0.73
7,173.0	58.00	271.10	6,758.9	1,556.5	545.1	-66.0	7.36	7.29	1.25
7,268.0	63.60	272.40	6,805.2	1,559.1	462.3	14.0	6.01	5.89	1.37
7,363.0	68.10	271.00	6,844.1	1,561.6	375.7	97.6	4.92	4.74	-1.47
7,459.0	78.10	271.10	6,871.9	1,563.3	283.9	185.8	10.42	10.42	0.10
7,555.0	82.70	273.80	6,887.9	1,567.4	189.4	277.4	5.54	4.79	2.81
7,651.0	88.30	271.70	6,895.5	1,572.0	93.9	370.1	6.23	5.83	-2.19
7,747.0	89.30	272.20	6,897.5	1,575.2	-2.1	462.8	1.16	1.04	0.52
7,842.0	90.10	272.20	6,898.0	1,578.9	-97.0	554.6	0.84	0.84	0.00
7,938.0	90.20	272.00	6,897.7	1,582.4	-192.9	647.4	0.23	0.10	-0.21
8,032.0	90.30	271.70	6,897.3	1,585.4	-286.9	738.1	0.34	0.11	-0.32
8,128.0	90.20	272.00	6,896.9	1,588.5	-382.8	830.8	0.33	-0.10	0.31
8,224.0	90.50	271.50	6,896.3	1,591.5	-478.8	923.4	0.61	0.31	-0.52
8,319.0	90.10	272.70	6,895.8	1,594.9	-573.7	1,015.2	1.33	-0.42	1.26
8,415.0	89.60	272.40	6,896.1	1,599.2	-669.6	1,108.1	0.61	-0.52	-0.31
8,510.0	89.30	271.70	6,897.0	1,602.6	-764.5	1,199.9	0.80	-0.32	-0.74
8,606.0	89.60	272.70	6,897.9	1,606.3	-860.5	1,292.7	1.09	0.31	1.04
8,701.0	89.90	272.40	6,898.3	1,610.5	-955.4	1,384.7	0.45	0.32	-0.32
8,797.0	89.80	272.00	6,898.6	1,614.2	-1,051.3	1,477.5	0.43	-0.10	-0.42
8,892.0	89.30	272.20	6,899.3	1,617.7	-1,146.2	1,569.3	0.57	-0.53	0.21
8,988.0	90.00	272.40	6,899.9	1,621.5	-1,242.2	1,662.2	0.76	0.73	0.21
9,083.0	89.30	272.60	6,900.5	1,625.7	-1,337.1	1,754.1	0.77	-0.74	0.21
9,179.0	89.00	272.70	6,901.9	1,630.1	-1,433.0	1,847.1	0.33	-0.31	0.10
9,275.0	90.00	271.30	6,902.7	1,633.5	-1,528.9	1,939.8	1.79	1.04	-1.46
9,370.0	90.00	269.90	6,902.7	1,634.5	-1,623.9	2,031.0	1.47	0.00	-1.47

<b>Company:</b>	PDC Energy Inc. DJ Basin	<b>Local Co-ordinate Reference:</b>	Well Josephine 19M-404
<b>Project:</b>	SEC.19-T5N-R64W	<b>TVD Reference:</b>	WELL @ 4649.0ft (Original Well Elev)
<b>Site:</b>	Josephine 5N64W19N Pad Sec.19-T5N-R64W	<b>MD Reference:</b>	WELL @ 4649.0ft (Original Well Elev)
<b>Well:</b>	Josephine 19M-404	<b>North Reference:</b>	True
<b>Wellbore:</b>	Wellbore #1	<b>Survey Calculation Method:</b>	Minimum Curvature
<b>Design:</b>	Wellbore #1	<b>Database:</b>	US_EDM

Survey									
Measured Depth (ft)	Inclination (°)	Azimuth (°)	Vertical Depth (ft)	+N/-S (ft)	+E/-W (ft)	Vertical Section (ft)	Dogleg Rate (°/100usft)	Build Rate (°/100usft)	Turn Rate (°/100usft)
Deepest TVD Drilled - 6902.74' TVD									
9,466.0	90.30	269.60	6,902.5	1,634.0	-1,719.9	2,122.6	0.44	0.31	-0.31
9,562.0	90.00	269.20	6,902.2	1,633.0	-1,815.9	2,214.1	0.52	-0.31	-0.42
9,658.0	89.70	269.90	6,902.5	1,632.3	-1,911.9	2,305.7	0.79	-0.31	0.73
9,754.0	91.10	268.90	6,901.8	1,631.3	-2,007.9	2,397.2	1.79	1.46	-1.04
9,849.0	91.40	268.50	6,899.7	1,629.1	-2,102.8	2,487.4	0.53	0.32	-0.42
9,945.0	91.40	268.30	6,897.4	1,626.4	-2,198.7	2,578.3	0.21	0.00	-0.21
10,041.0	90.30	269.00	6,896.0	1,624.2	-2,294.7	2,669.4	1.36	-1.15	0.73
10,136.0	90.10	269.00	6,895.6	1,622.5	-2,389.7	2,759.8	0.21	-0.21	0.00
10,232.0	91.40	271.10	6,894.4	1,622.6	-2,485.7	2,851.6	2.57	1.35	2.19
10,328.0	89.70	269.60	6,893.5	1,623.2	-2,581.7	2,943.6	2.36	-1.77	-1.56
10,423.0	90.00	269.40	6,893.7	1,622.4	-2,676.7	3,034.2	0.38	0.32	-0.21
10,519.0	90.10	269.70	6,893.6	1,621.6	-2,772.7	3,125.7	0.33	0.10	0.31
10,614.0	89.40	270.10	6,894.0	1,621.4	-2,867.7	3,216.5	0.85	-0.74	0.42
10,709.0	88.40	268.20	6,895.9	1,620.0	-2,962.6	3,306.9	2.26	-1.05	-2.00
10,805.0	89.30	268.00	6,897.8	1,616.9	-3,058.5	3,397.7	0.96	0.94	-0.21
10,901.0	89.80	271.50	6,898.6	1,616.4	-3,154.5	3,489.4	3.68	0.52	3.65
10,996.0	89.90	271.10	6,898.8	1,618.6	-3,249.5	3,580.8	0.43	0.11	-0.42
11,092.0	89.30	270.40	6,899.5	1,619.8	-3,345.5	3,673.0	0.96	-0.63	-0.73
11,187.0	89.30	269.70	6,900.6	1,619.9	-3,440.5	3,763.9	0.74	0.00	-0.74
11,282.0	90.50	271.80	6,900.8	1,621.2	-3,535.5	3,855.1	2.55	1.26	2.21
11,378.0	90.20	271.50	6,900.2	1,623.9	-3,631.4	3,947.6	0.44	-0.31	-0.31
11,474.0	90.70	272.00	6,899.5	1,626.9	-3,727.4	4,040.2	0.74	0.52	0.52
11,569.0	91.00	271.10	6,898.0	1,629.4	-3,822.3	4,131.8	1.00	0.32	-0.95
11,664.0	90.80	271.10	6,896.6	1,631.3	-3,917.3	4,223.1	0.21	-0.21	0.00
11,759.0	90.50	272.20	6,895.5	1,634.0	-4,012.3	4,314.7	1.20	-0.32	1.16
11,855.0	89.80	272.20	6,895.2	1,637.7	-4,108.2	4,407.5	0.73	-0.73	0.00
11,950.0	89.00	272.20	6,896.2	1,641.3	-4,203.1	4,499.4	0.84	-0.84	0.00
12,046.0	88.50	274.00	6,898.3	1,646.5	-4,298.9	4,592.5	1.95	-0.52	1.88
12,142.0	89.40	273.80	6,900.1	1,653.0	-4,394.7	4,686.0	0.96	0.94	-0.21
12,238.0	89.80	272.40	6,900.7	1,658.2	-4,490.6	4,779.2	1.52	0.42	-1.46
12,334.0	90.70	272.70	6,900.3	1,662.5	-4,586.5	4,872.2	0.99	0.94	0.31
12,429.0	91.50	272.70	6,898.5	1,667.0	-4,681.3	4,964.2	0.84	0.84	0.00
12,525.0	91.80	273.10	6,895.7	1,671.8	-4,777.2	5,057.3	0.52	0.31	0.42
12,621.0	91.40	272.20	6,893.1	1,676.3	-4,873.0	5,150.2	1.03	-0.42	-0.94
12,716.0	90.00	271.30	6,891.9	1,679.2	-4,968.0	5,241.9	1.75	-1.47	-0.95
12,812.0	89.30	270.10	6,892.5	1,680.3	-5,064.0	5,334.0	1.45	-0.73	-1.25
12,907.0	90.40	271.10	6,892.7	1,681.3	-5,159.0	5,425.1	1.56	1.16	1.05
13,003.0	89.70	269.90	6,892.6	1,682.2	-5,254.9	5,517.2	1.45	-0.73	-1.25
13,112.0	90.30	271.10	6,892.6	1,683.1	-5,363.9	5,621.7	1.23	0.55	1.10
13,167.0	90.30	271.10	6,892.4	1,684.2	-5,418.9	5,674.6	0.00	0.00	0.00

<b>Company:</b>	PDC Energy Inc. DJ Basin	<b>Local Co-ordinate Reference:</b>	Well Josephine 19M-404
<b>Project:</b>	SEC.19-T5N-R64W	<b>TVD Reference:</b>	WELL @ 4649.0ft (Original Well Elev)
<b>Site:</b>	Josephine 5N64W19N Pad Sec.19-T5N-R64W	<b>MD Reference:</b>	WELL @ 4649.0ft (Original Well Elev)
<b>Well:</b>	Josephine 19M-404	<b>North Reference:</b>	True
<b>Wellbore:</b>	Wellbore #1	<b>Survey Calculation Method:</b>	Minimum Curvature
<b>Design:</b>	Wellbore #1	<b>Database:</b>	US_EDM

Design Targets									
Target Name	Dip Angle (°)	Dip Dir. (°)	TVD (ft)	+N/-S (ft)	+E/-W (ft)	Northing (usft)	Easting (usft)	Latitude	Longitude
- hit/miss target									
- Shape									
SHL 1699'FNL, 2215'FE	0.00	0.00	1.0	0.0	0.0	1,385,201.68	3,253,128.43	40.387220	-104.591290
- survey hits target center									
- Point									
BHL 50'FNL, 2471'FEL,	0.00	0.00	6,898.0	1,658.2	-5,420.7	1,386,804.19	3,247,691.25	40.391770	-104.610750
- survey misses target center by 26.6ft at 13167.0ft MD (6892.4 TVD, 1684.2 N, -5418.9 E)									
- Point									

Survey Annotations				
Measured Depth (ft)	Vertical Depth (ft)	Local Coordinates		Comment
		+N/-S (ft)	+E/-W (ft)	
9,370.0	6,902.7	1,634.5	-1,623.9	Deepest TVD Drilled - 6902.74' TVD

Checked By: _____	Approved By: _____	Date: _____
-------------------	--------------------	-------------