

OPERATOR: **Extraction Oil & Gas**

WELL NAME: **WS Sunrise 5-5-5**

FIELD NAME: DJ Basin - Wattenberg

DRILLING RIG: Patterson 346

API #: 05-123-46052

LAT/LONG: 40.43718, -104.68361

SURFACE HOLE: SWSE S32-T6N-R65W, 253' FSL, 1650' FEL

BOTTOM HOLE: S5-T5N-R65W, 460' FSL, 660' FEL



Earth Science Agency, LLC

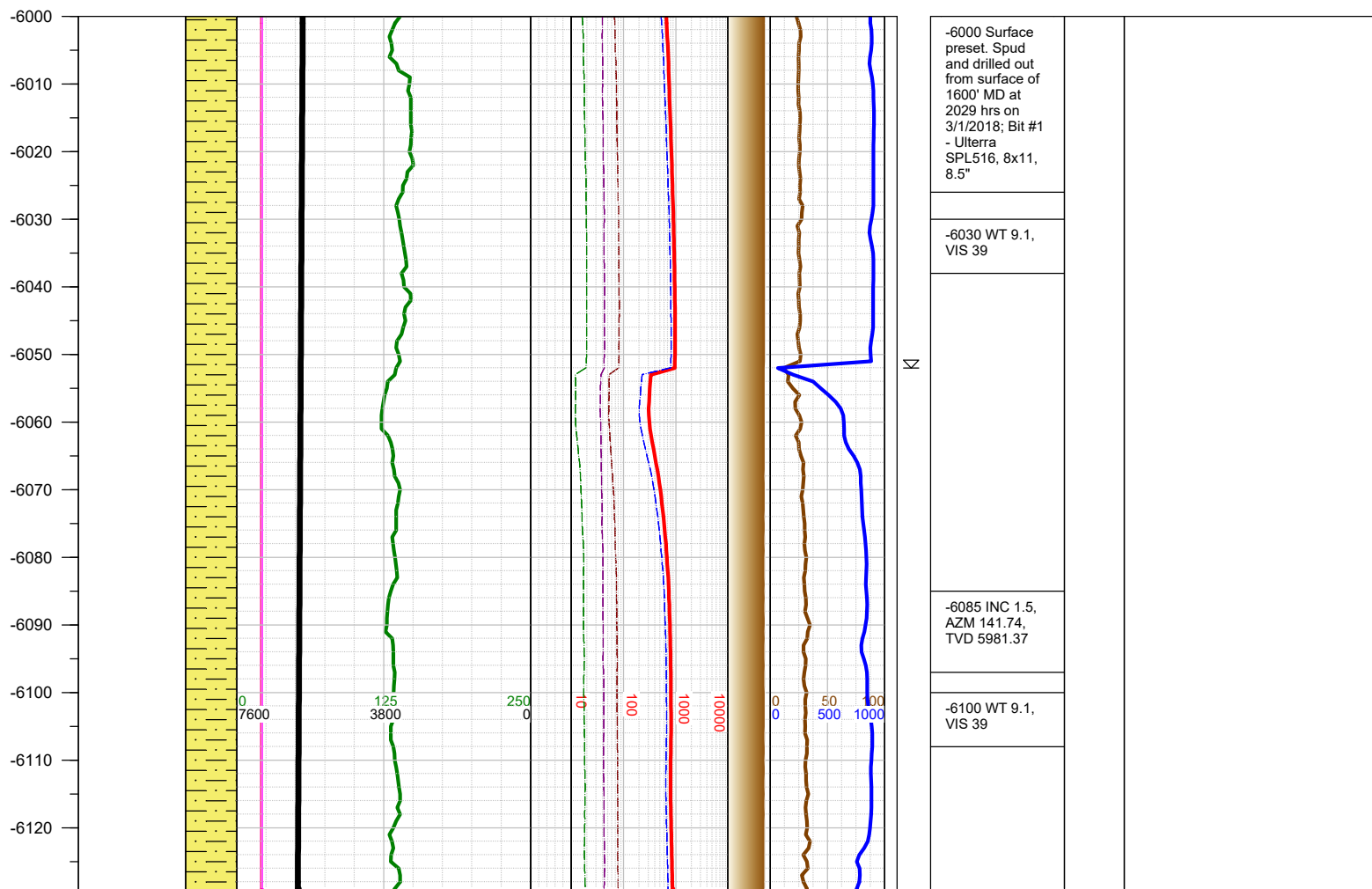
COUNTY: Weld
STATE: Colorado
GROUND ELEVATION: 4641'
KELLY BUSHING: 4666'
DRILLING FLUID: OBM
TVD VS. MD: 6959' / 11959'
SPUD DATE: March 1, 2018
TD DATE: March 3, 2018

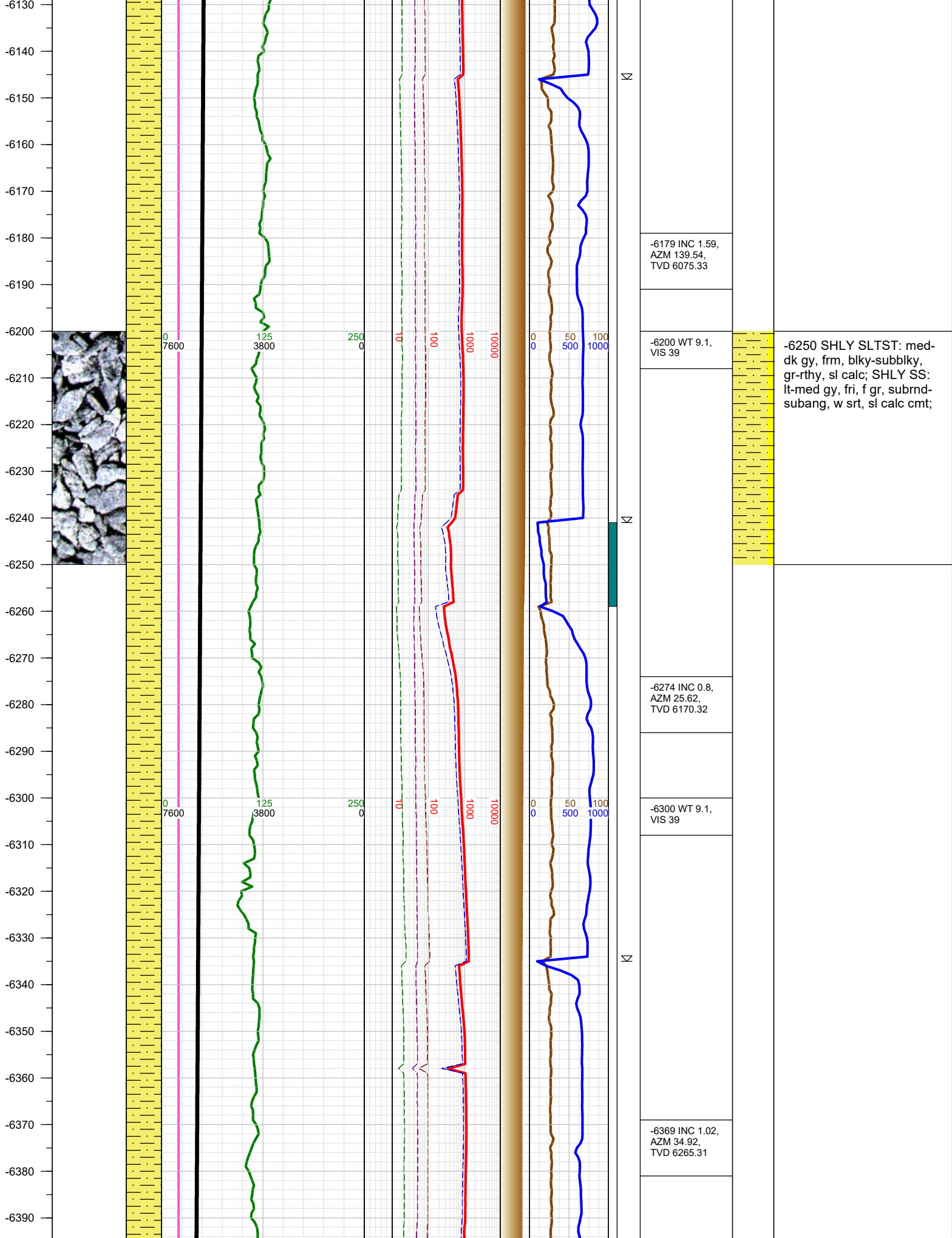
DEPTHS LOGGED: 6000' - 11959'
DATES LOGGED: March 2, 2018 - March 3, 2018
GEOLOGISTS: Ross Apodaca, Brian Whitfield
SCALE: 5" = 100'

LEGEND

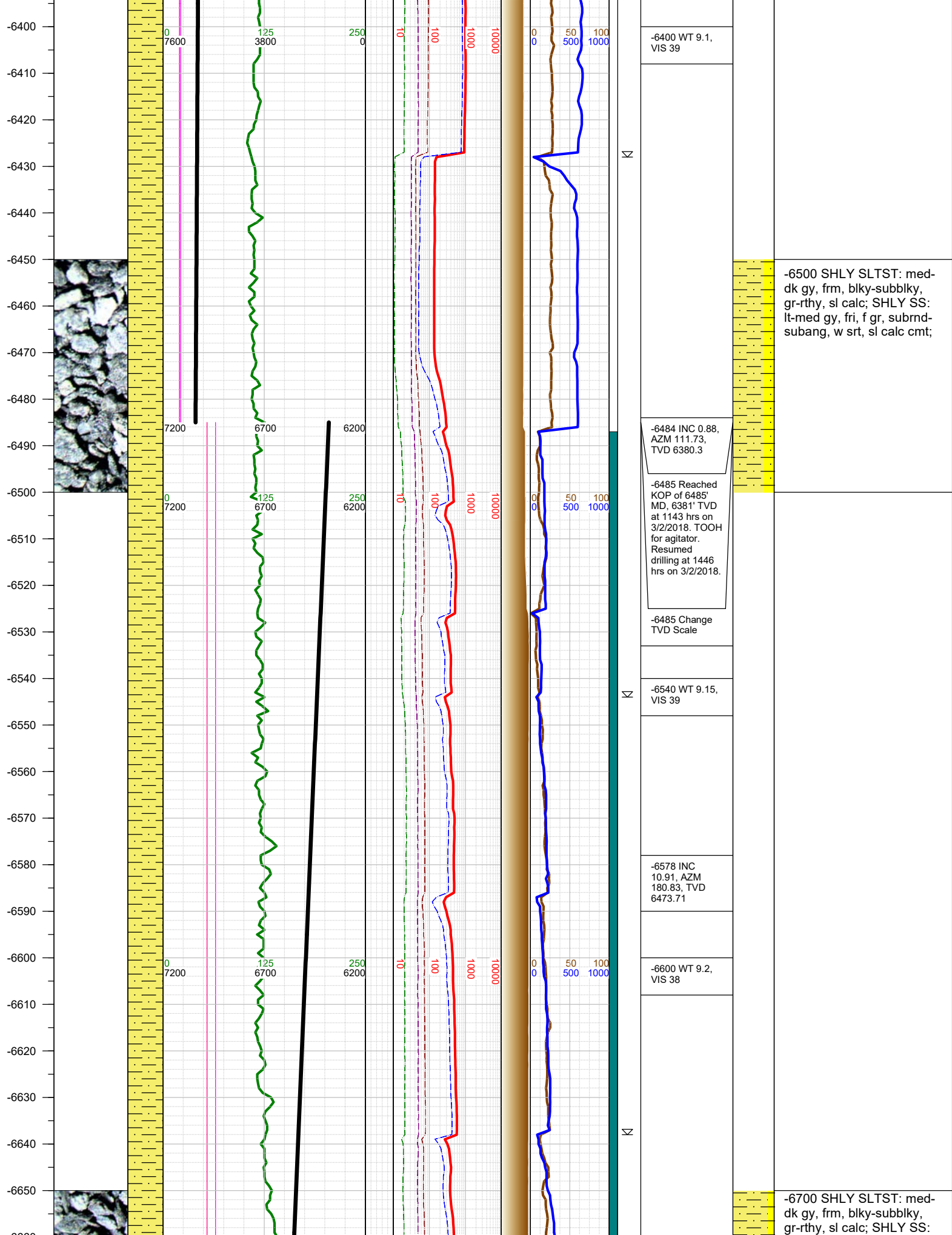


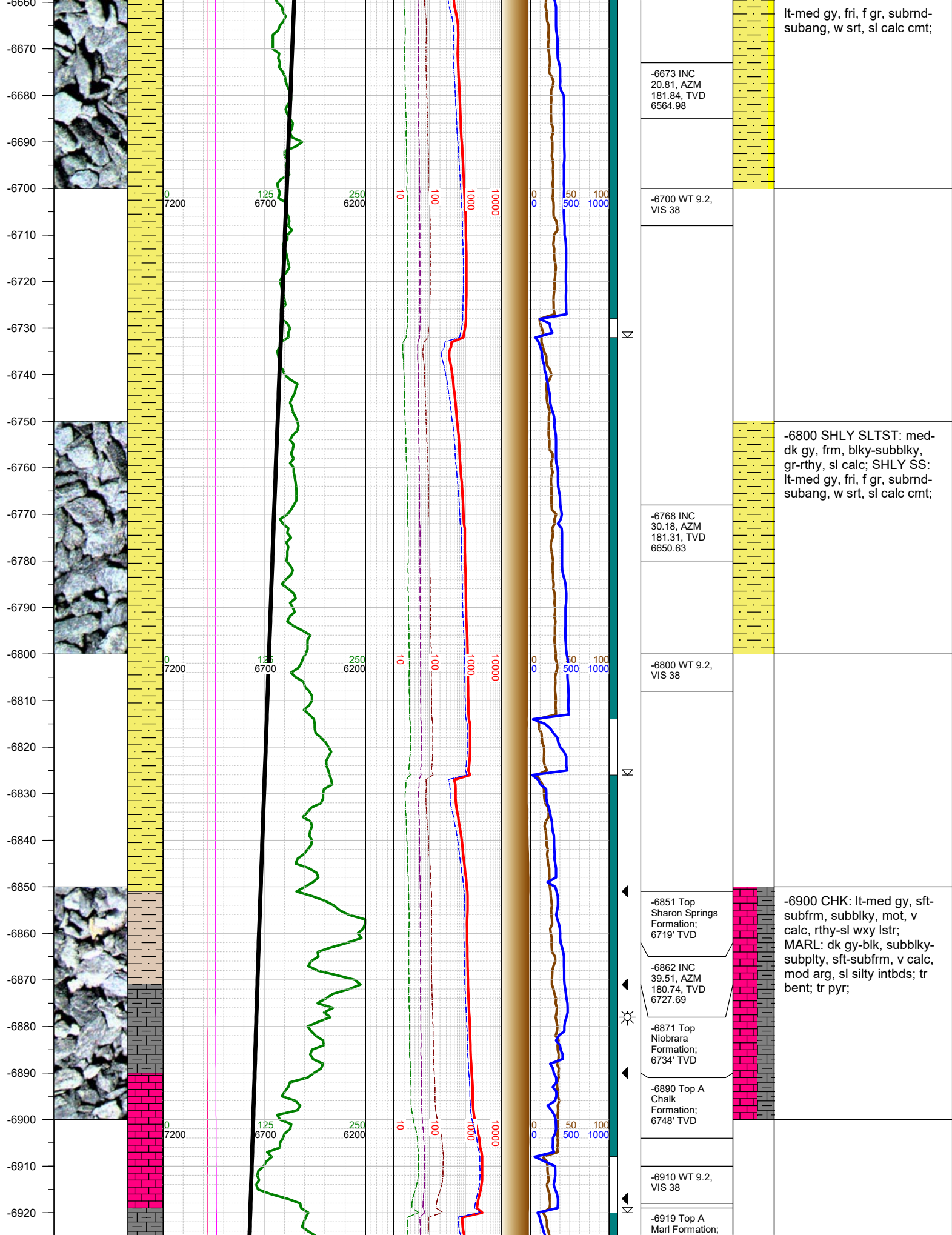
FORMATION \approx CONNECTION Δ MIDNIGHT NEW BIT GAS SHOW FAULT

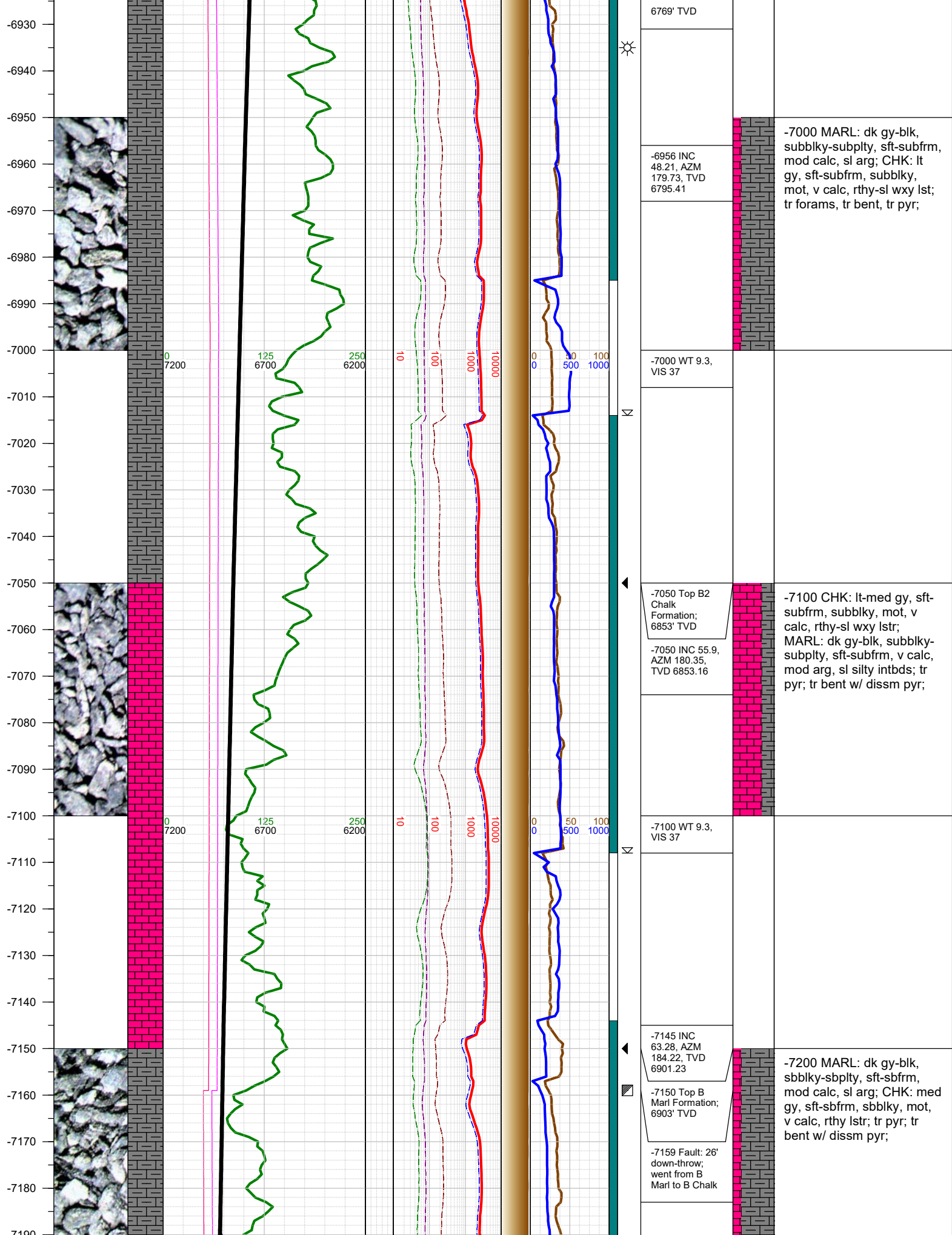


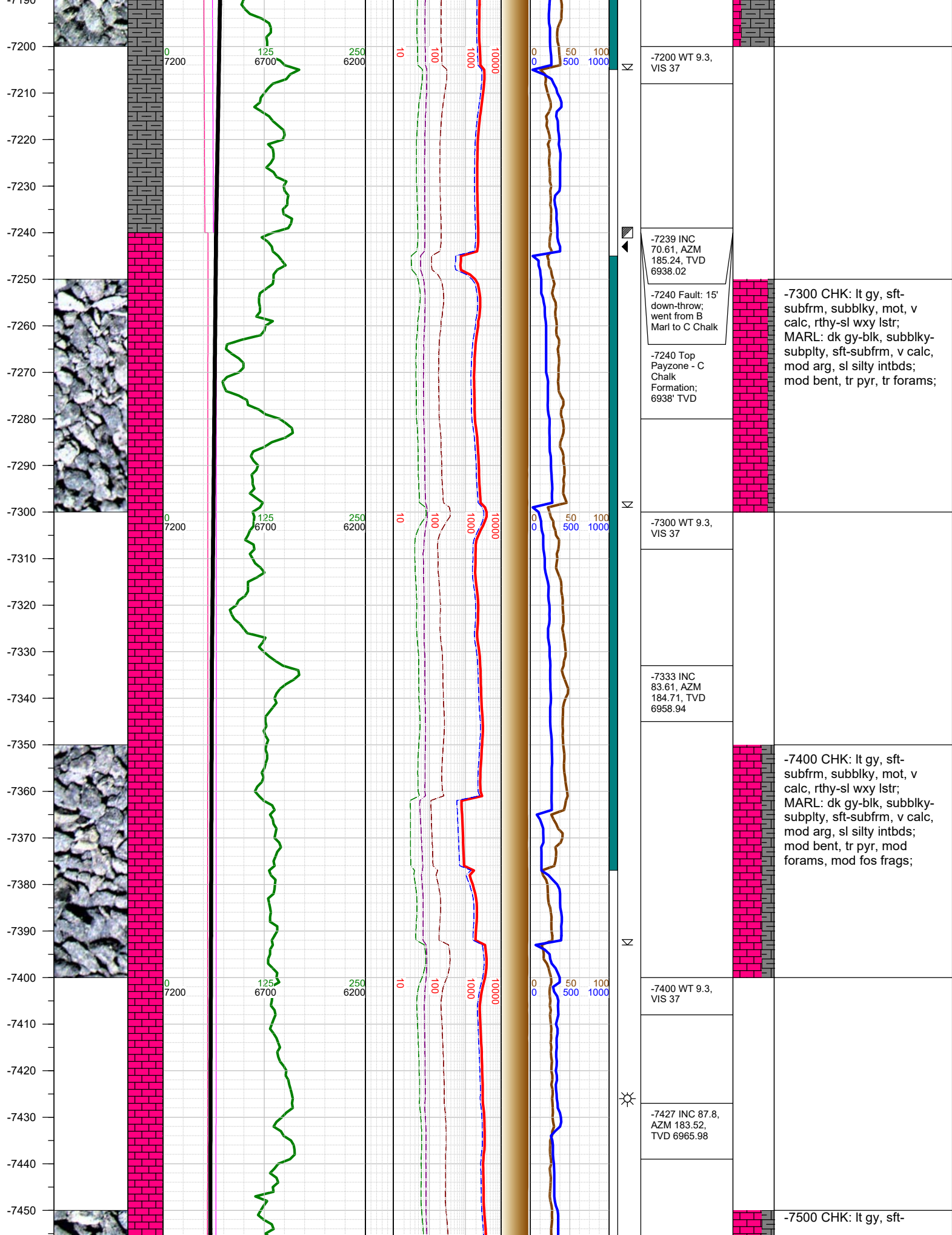


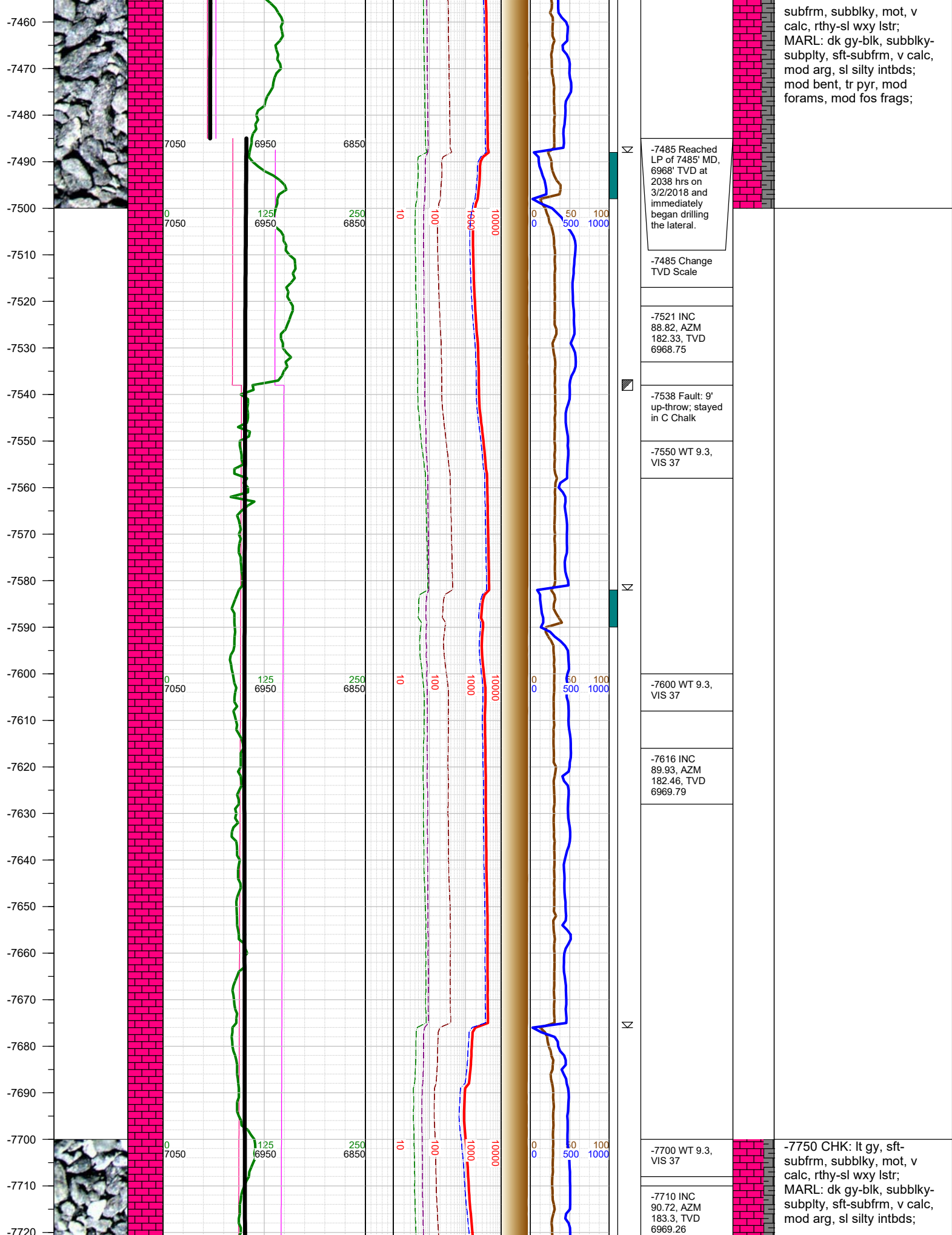
-6250 SHLY SLTST: med-
dk gy, frm, blk-subblky,
gr-rthy, sl calc; SHLY SS:
lt-med gy, fri, f gr, subrnd-
subang, w srt, sl calc cmt;

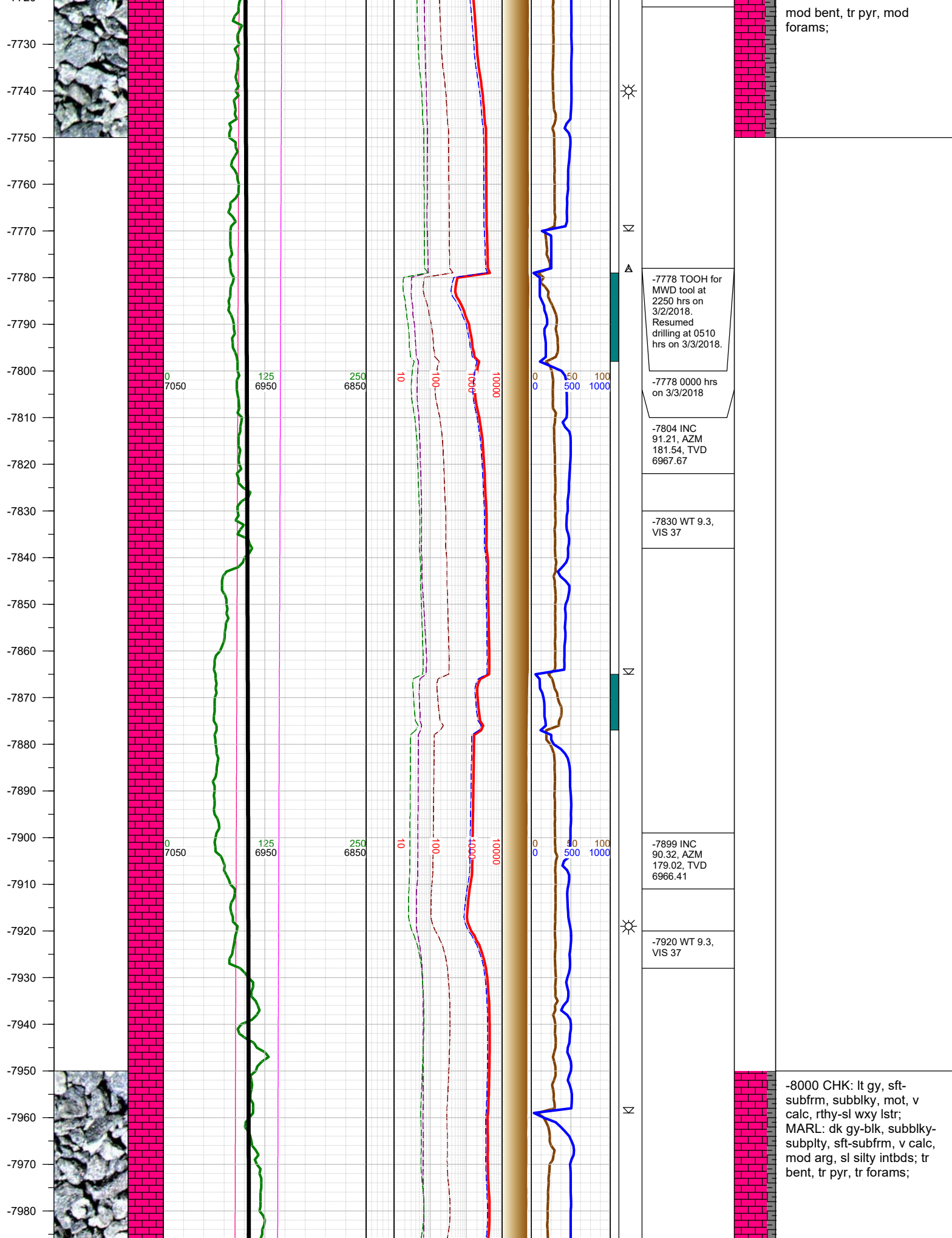


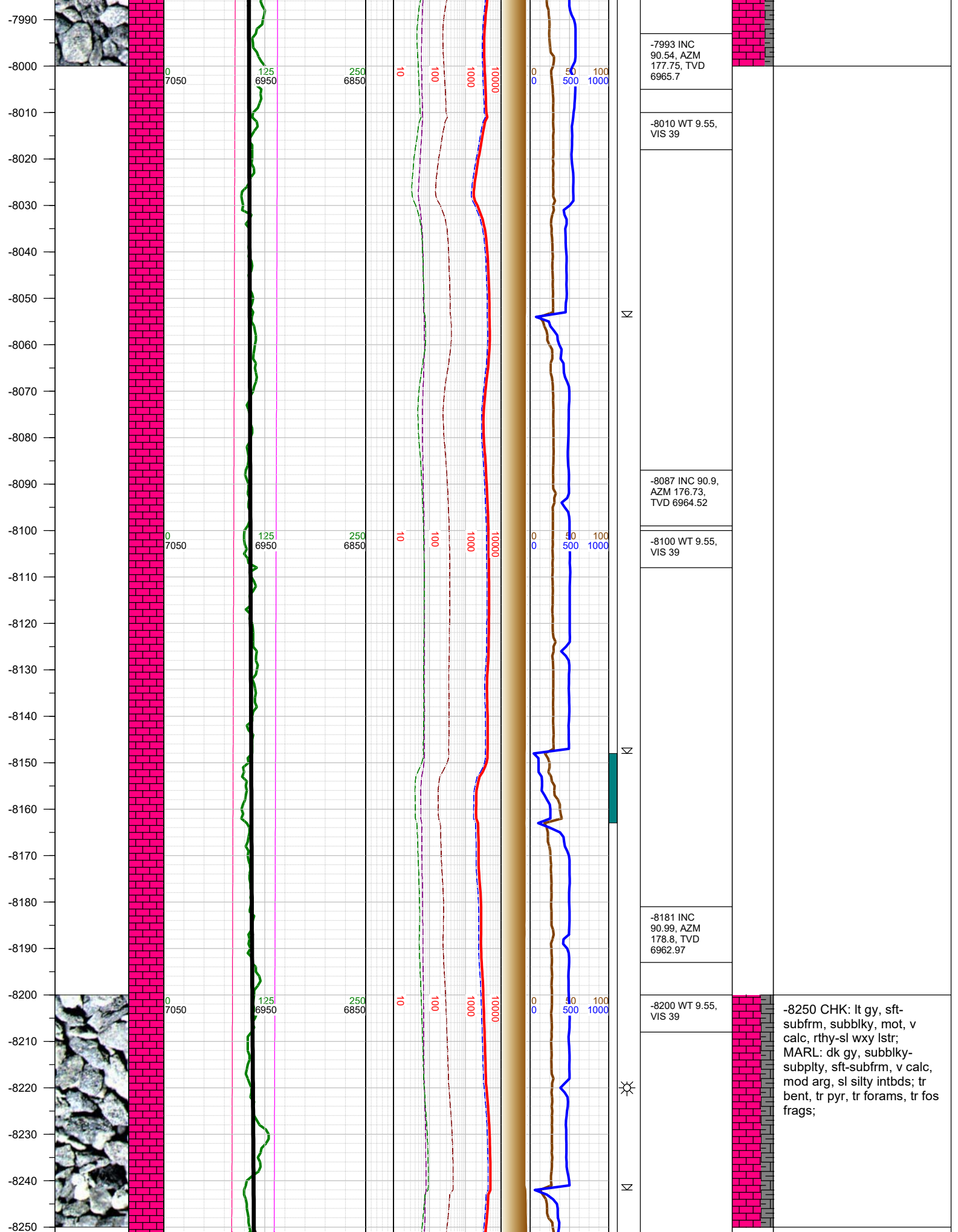


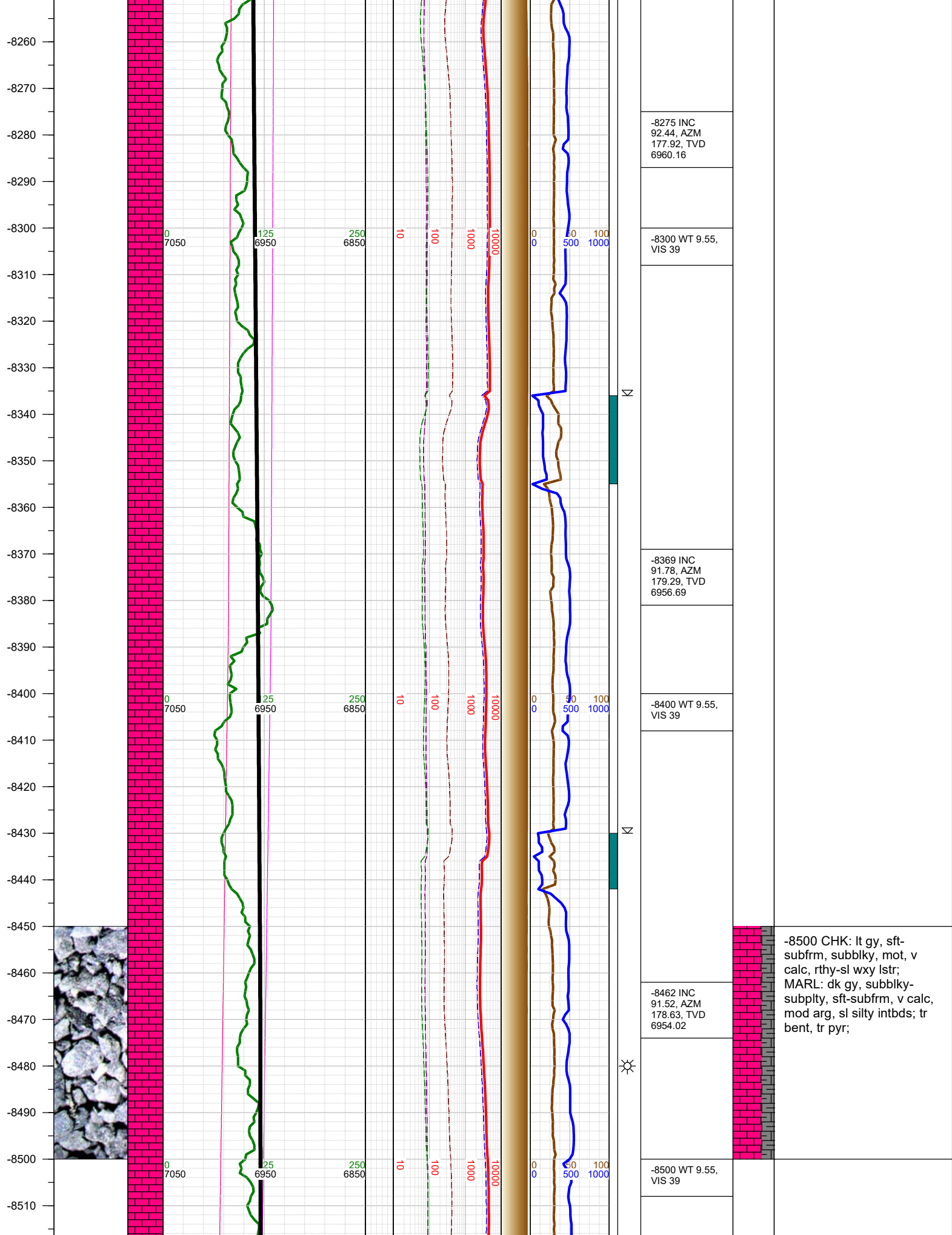




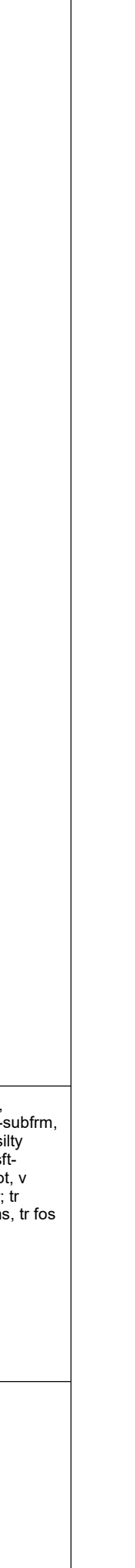
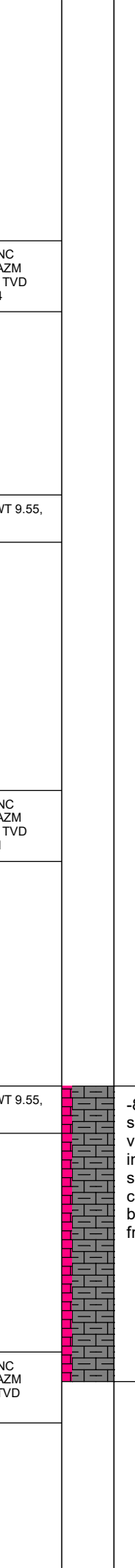
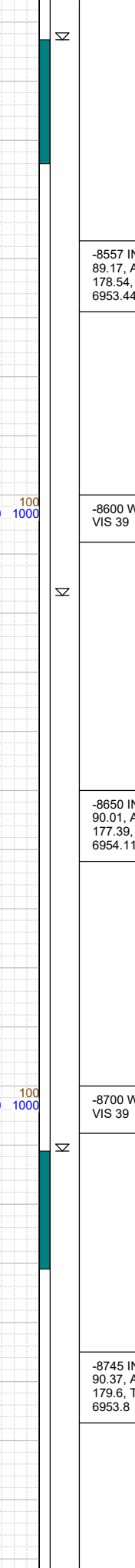
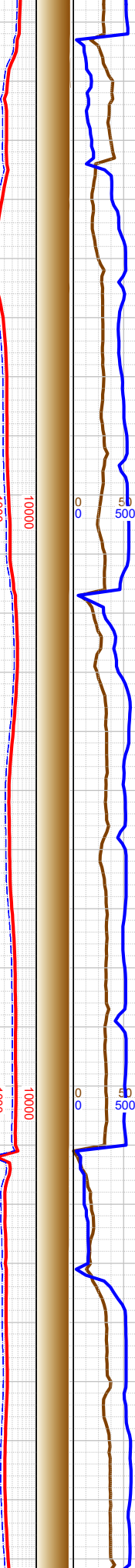
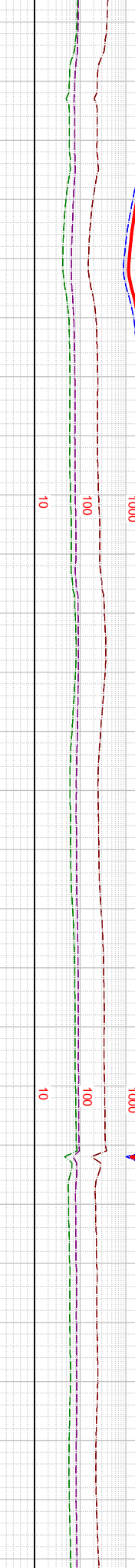
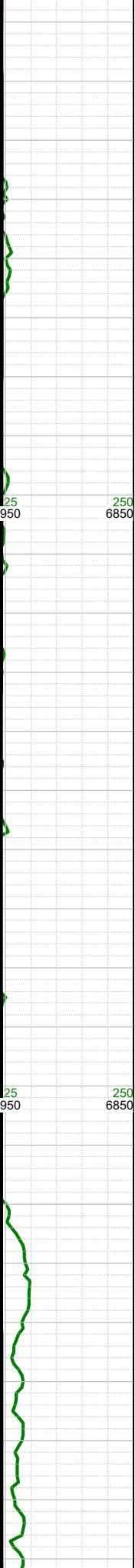
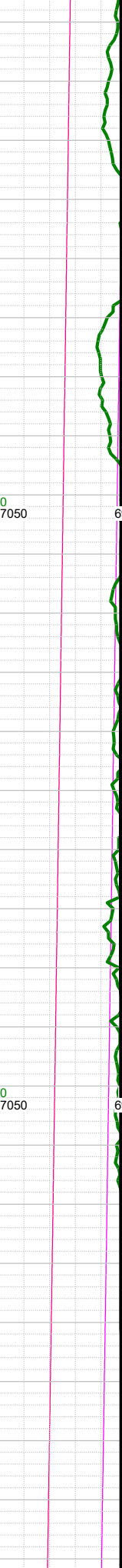
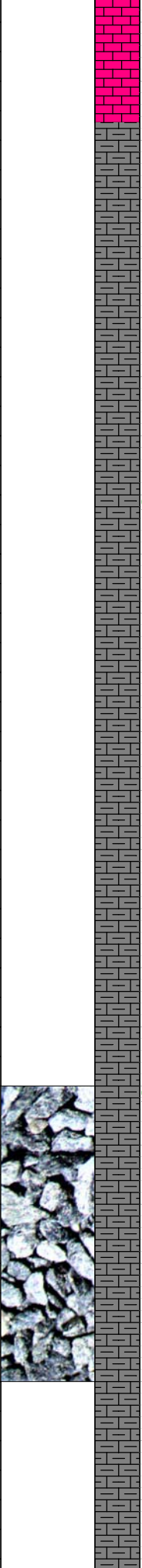








-8520
-8530
-8540
-8550
-8560
-8570
-8580
-8590
-8600
-8610
-8620
-8630
-8640
-8650
-8660
-8670
-8680
-8690
-8700
-8710
-8720
-8730
-8740
-8750
-8760
-8770
-8780



-8557 INC
89.17, AZM
178.54, TVD
6953.44

-8600 WT 9.55,
VIS 39

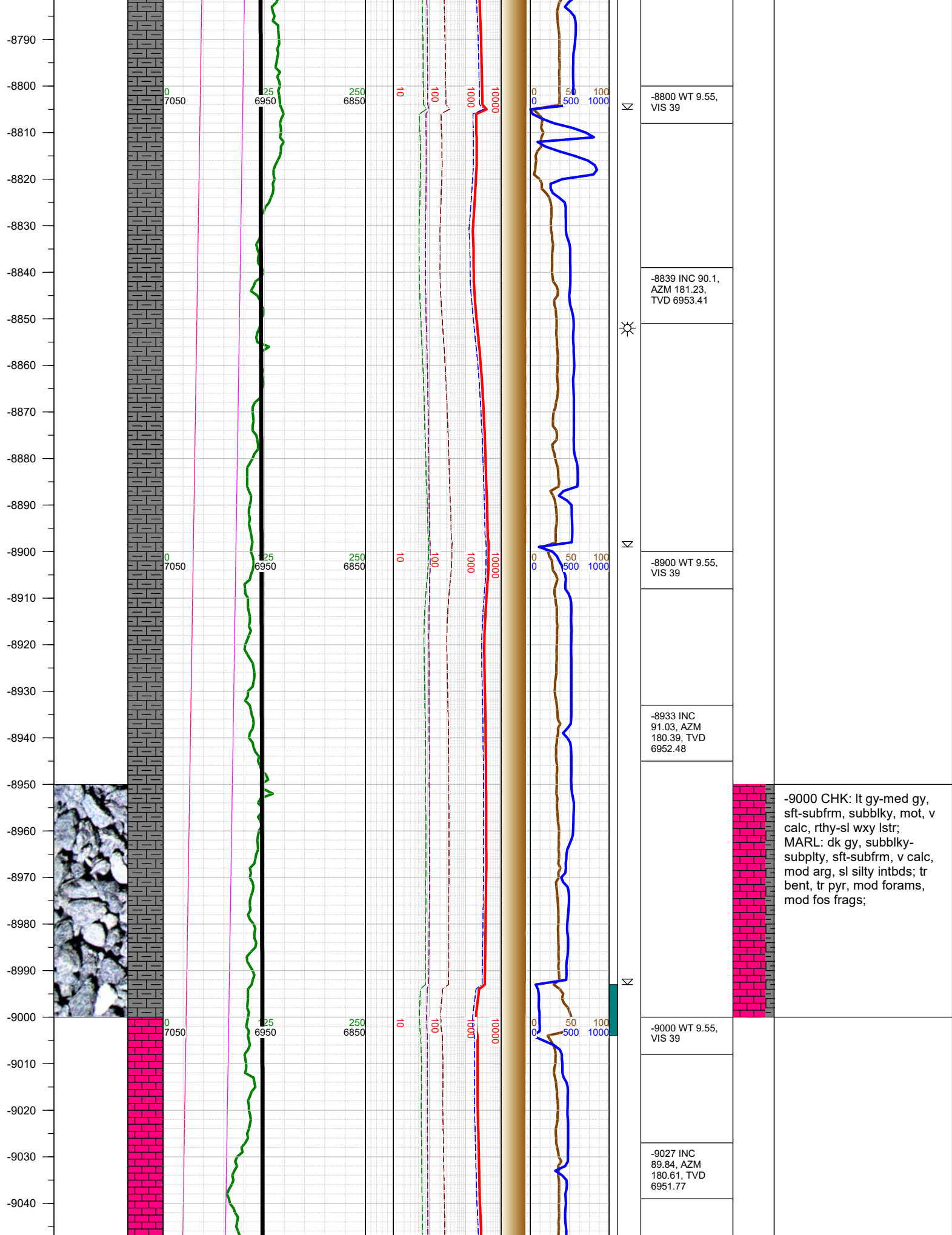
-8650 INC
90.01, AZM
177.39, TVD
6954.11

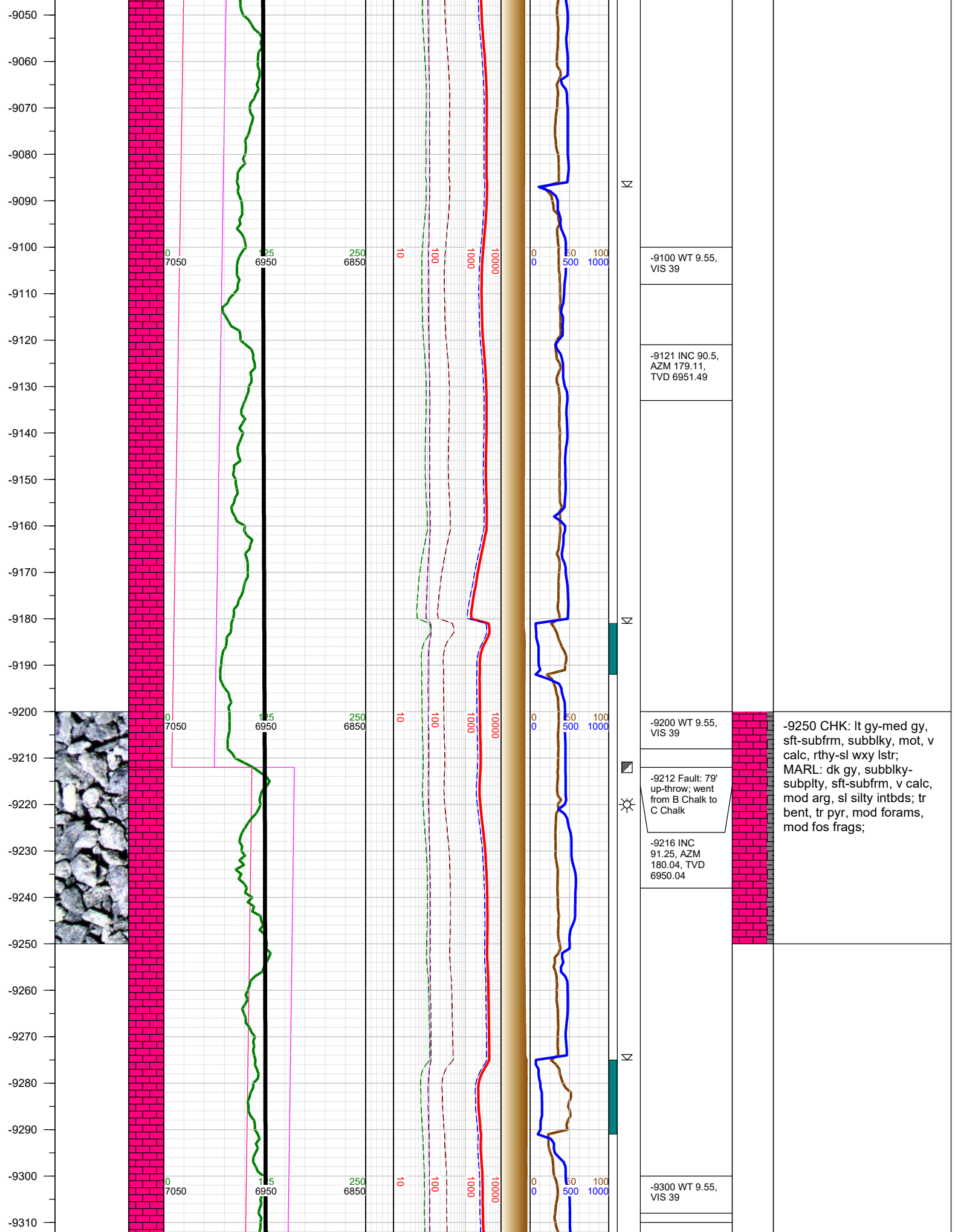
-8700 WT 9.55,
VIS 39

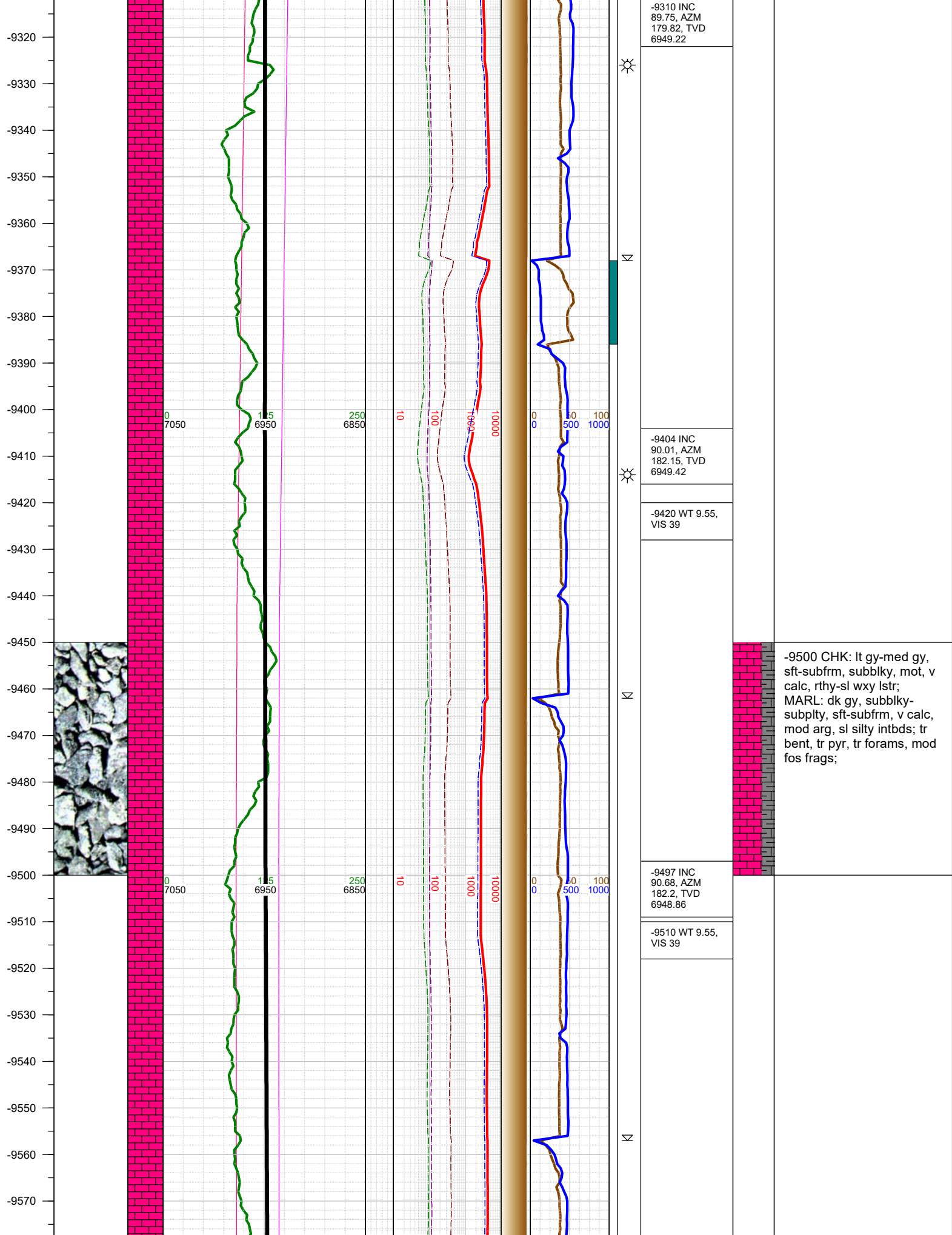
-8745 INC
90.37, AZM
179.6, TVD
6953.8

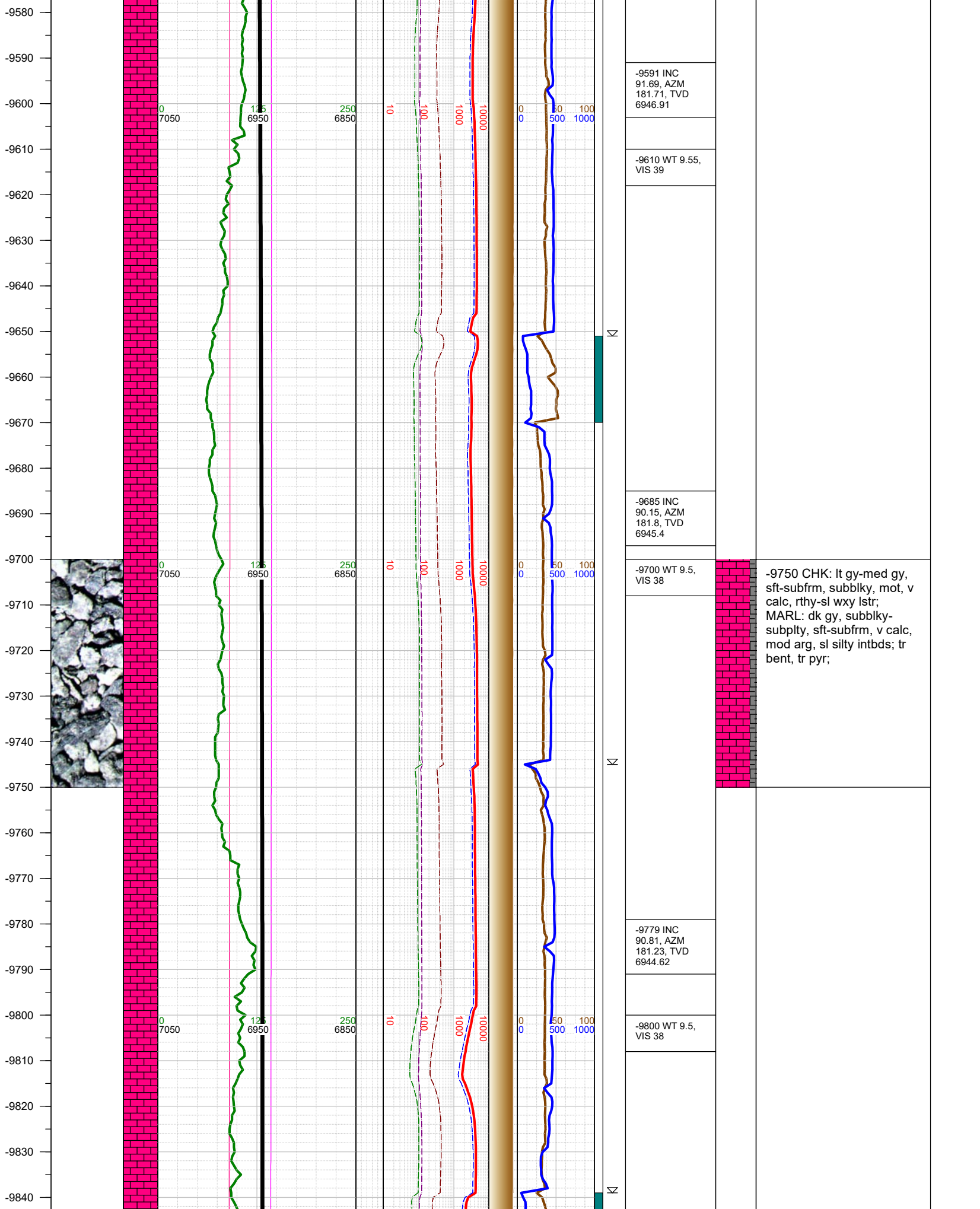


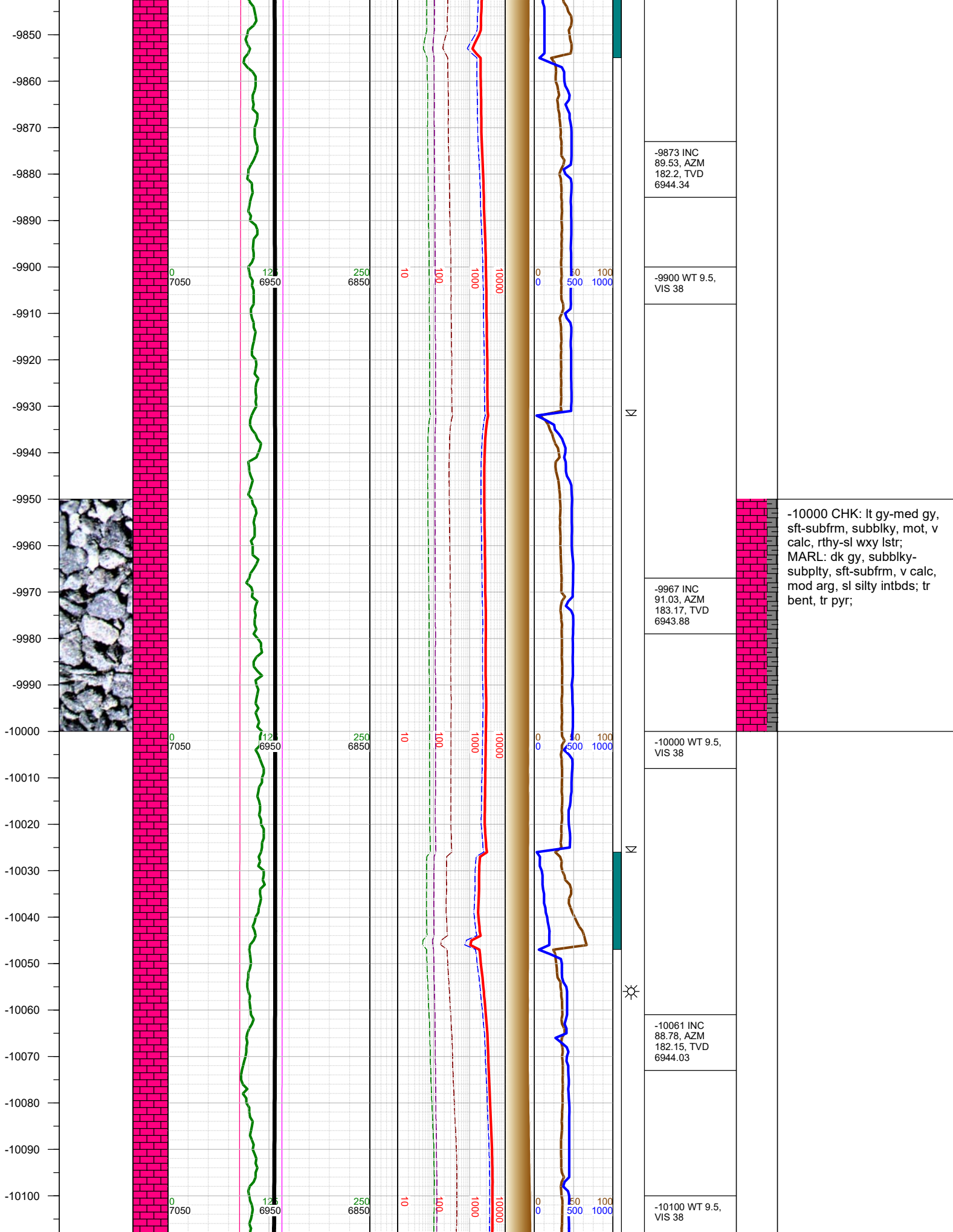
-8750 MARL: dk gy,
subblky-subplty, sft-subfrm,
v calc, mod arg, sl silty
intbds; CHK: lt gy, sft-
subfrm, subblky, mot, v
calc, rthy-sl wxy lstr; tr
bent, tr pyr, tr forams, tr fos
frags;

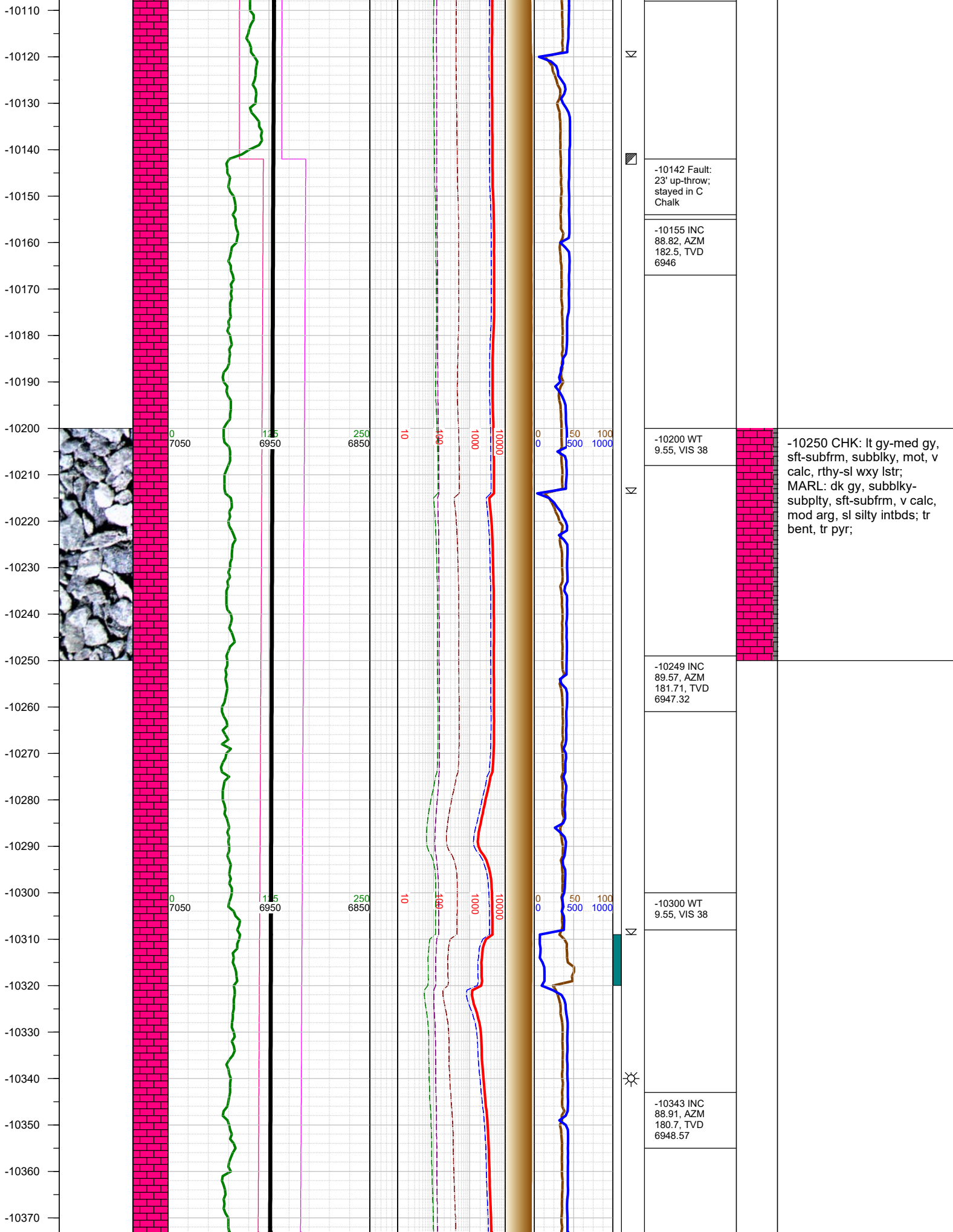


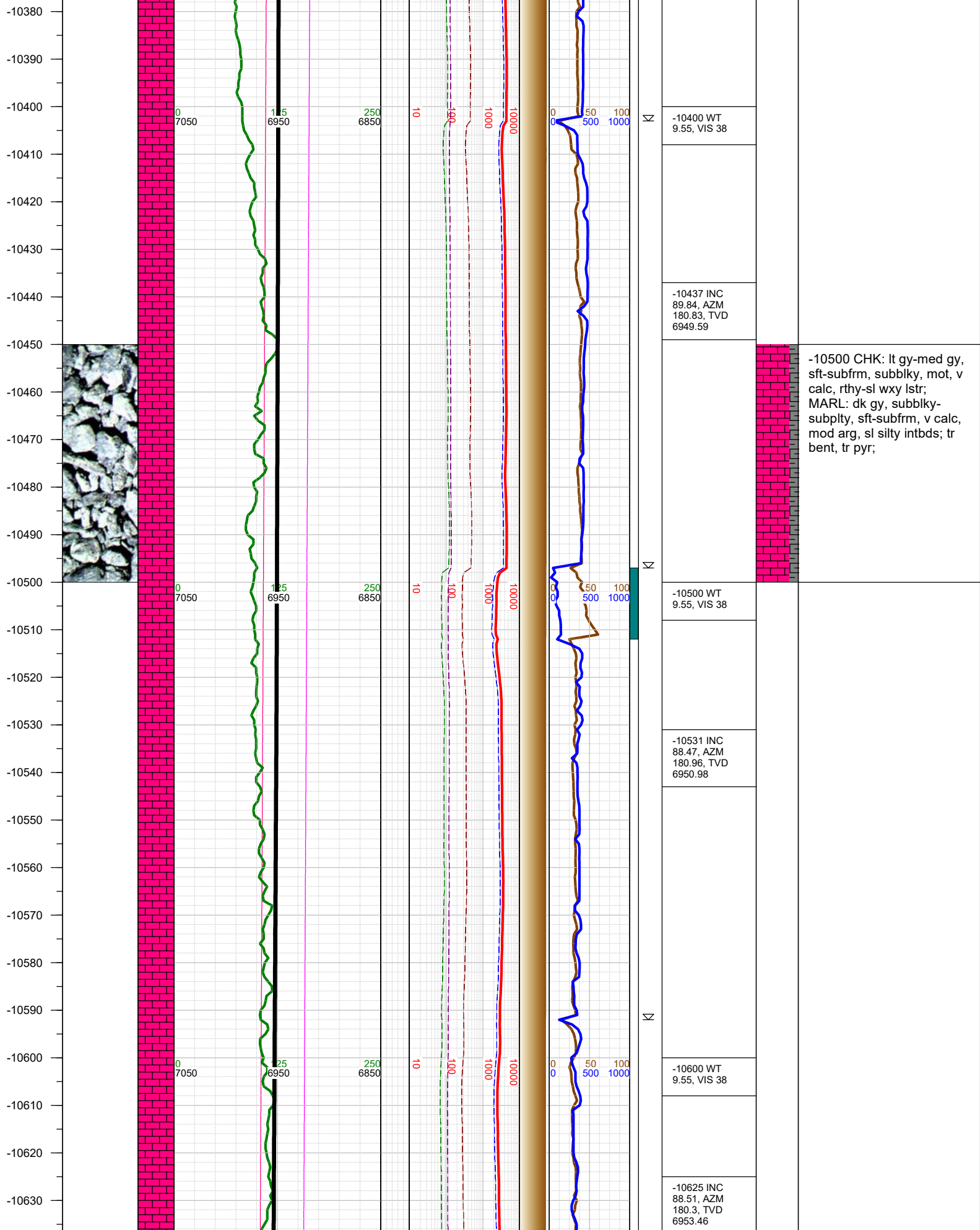


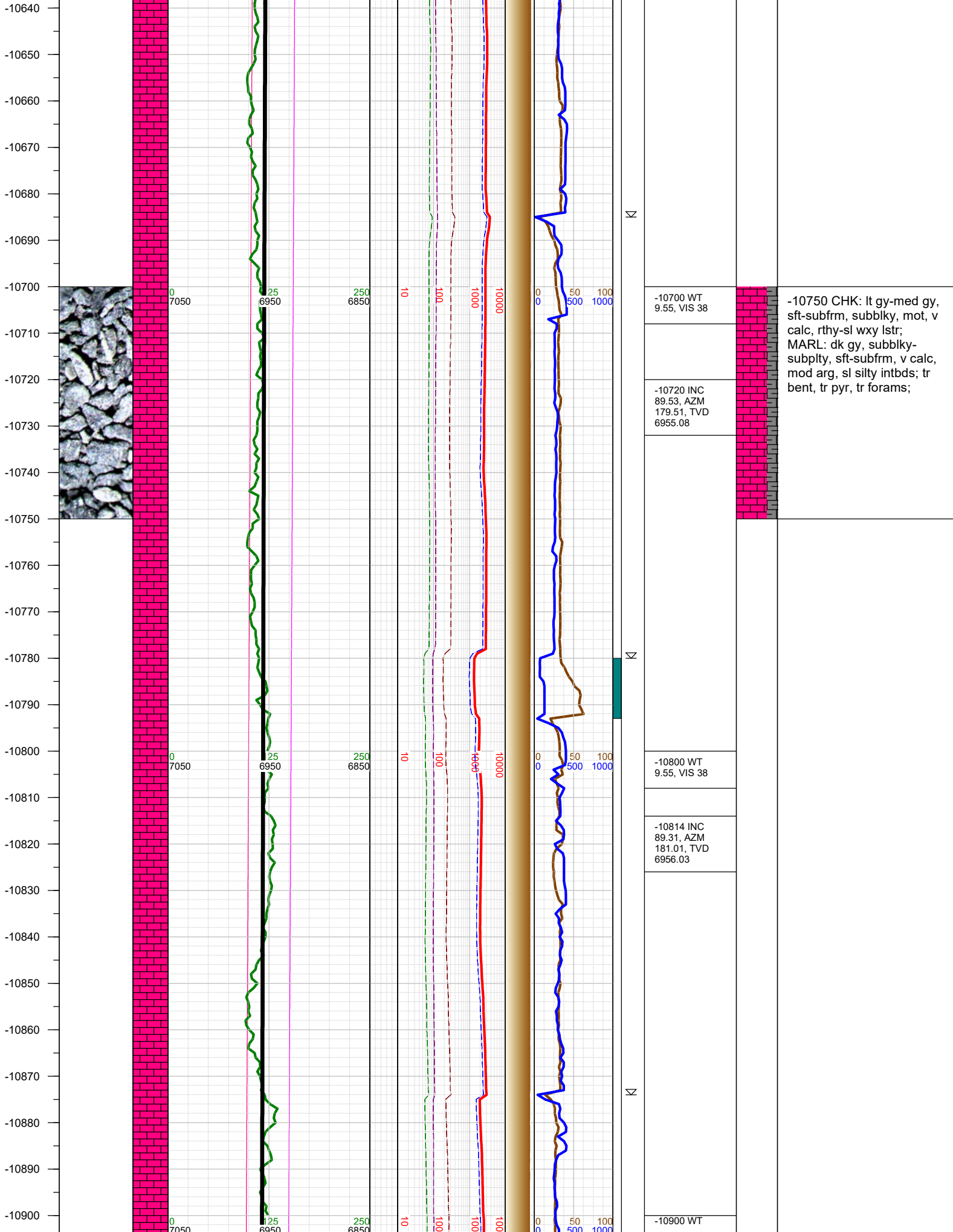




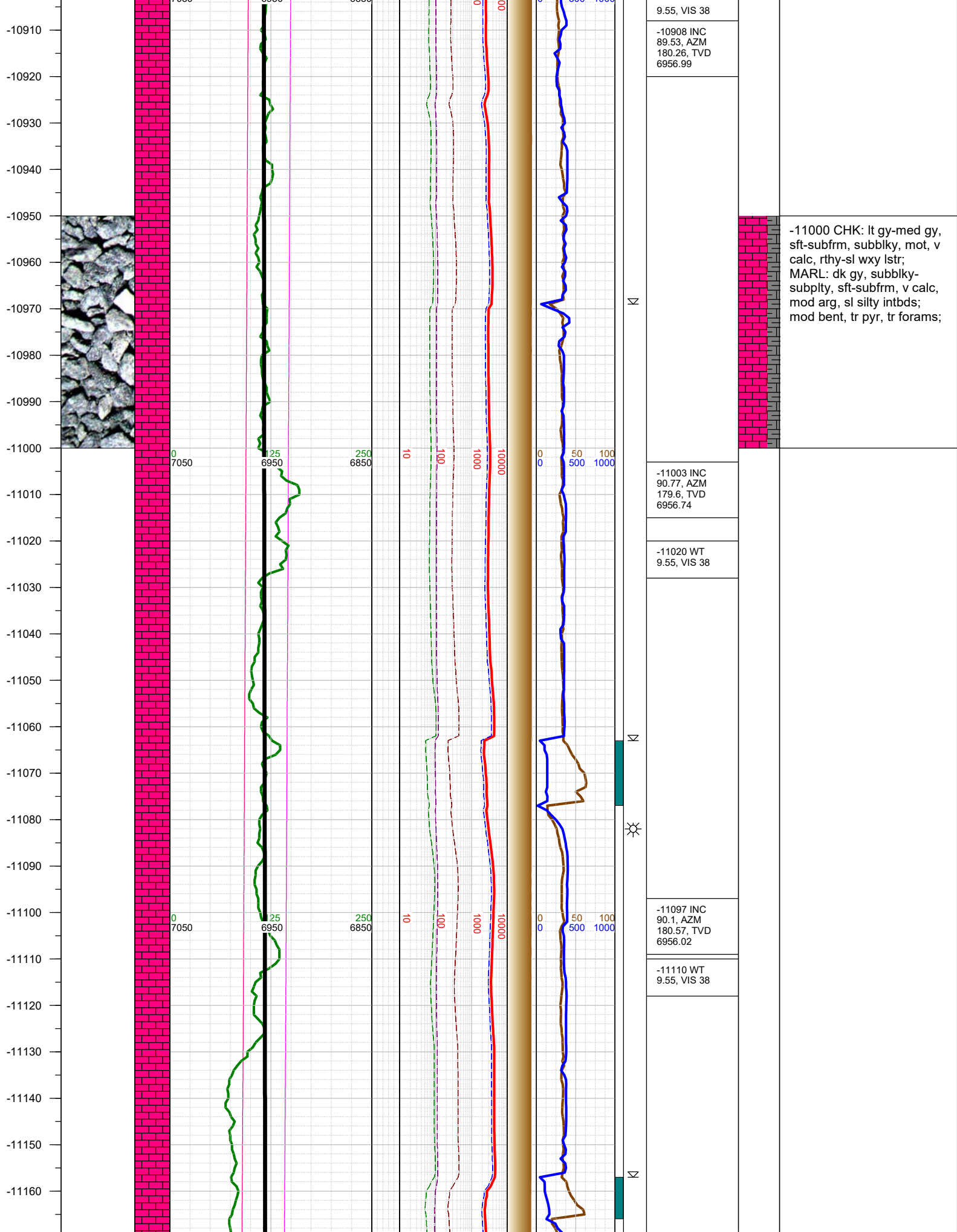


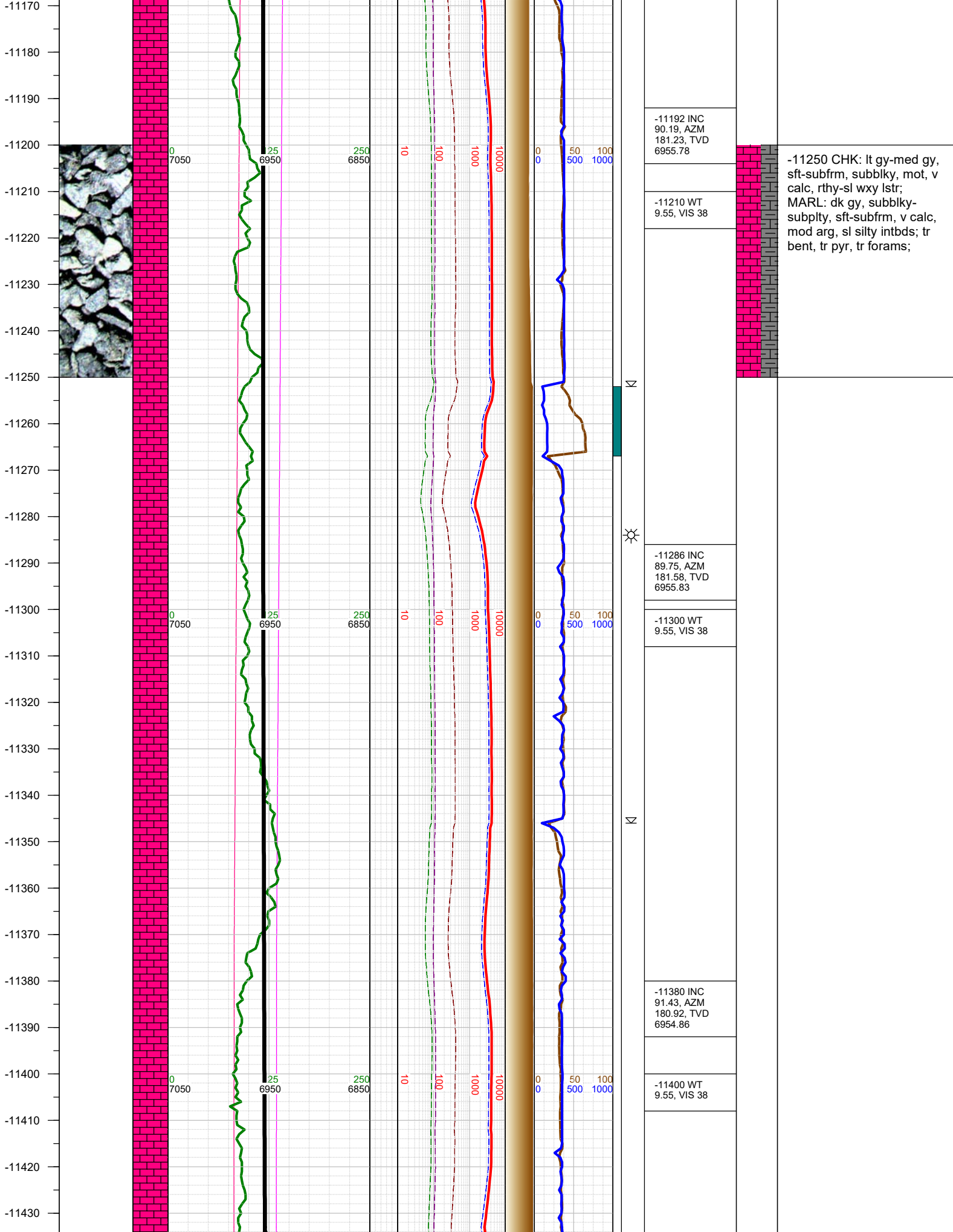




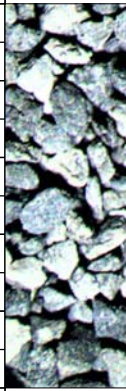


-10750 CHK: lt gy-med gy, sft-subfrm, subblky, mot, v calc, rthy-sl wxy lstr; MARL: dk gy, subblky-subply, sft-subfrm, v calc, mod arg, sl silty intbds; tr bent, tr pyr, tr forams;





-11440
-11450
-11460
-11470
-11480
-11490
-11500
-11510
-11520
-11530
-11540
-11550
-11560
-11570
-11580
-11590
-11600
-11610
-11620
-11630
-11640
-11650
-11660
-11670
-11680
-11690



0
7050

25
6950

250
6850

10

100

1000

10000

0

50

100

500

1000

-11475 INC
90.23, AZM
180.74, TVD
6953.49

-11500 WT
9.55, VIS 38

-11570 INC
88.6, AZM
180.26, TVD
6954.46

-11600 WT
9.55, VIS 38

-11664 INC
90.06, AZM
179.64, TVD
6955.56

-11500 CHK: lt gy-med gy,
sft-subfrm, subblky, mot, v
calc, rthy-sl wxy lstr;
MARL: dk gy, subblky-
subplty, sft-subfrm, v calc,
mod arg, sl silty intbds; tr
bent, tr pyr, mod forams, tr
fos frags;

