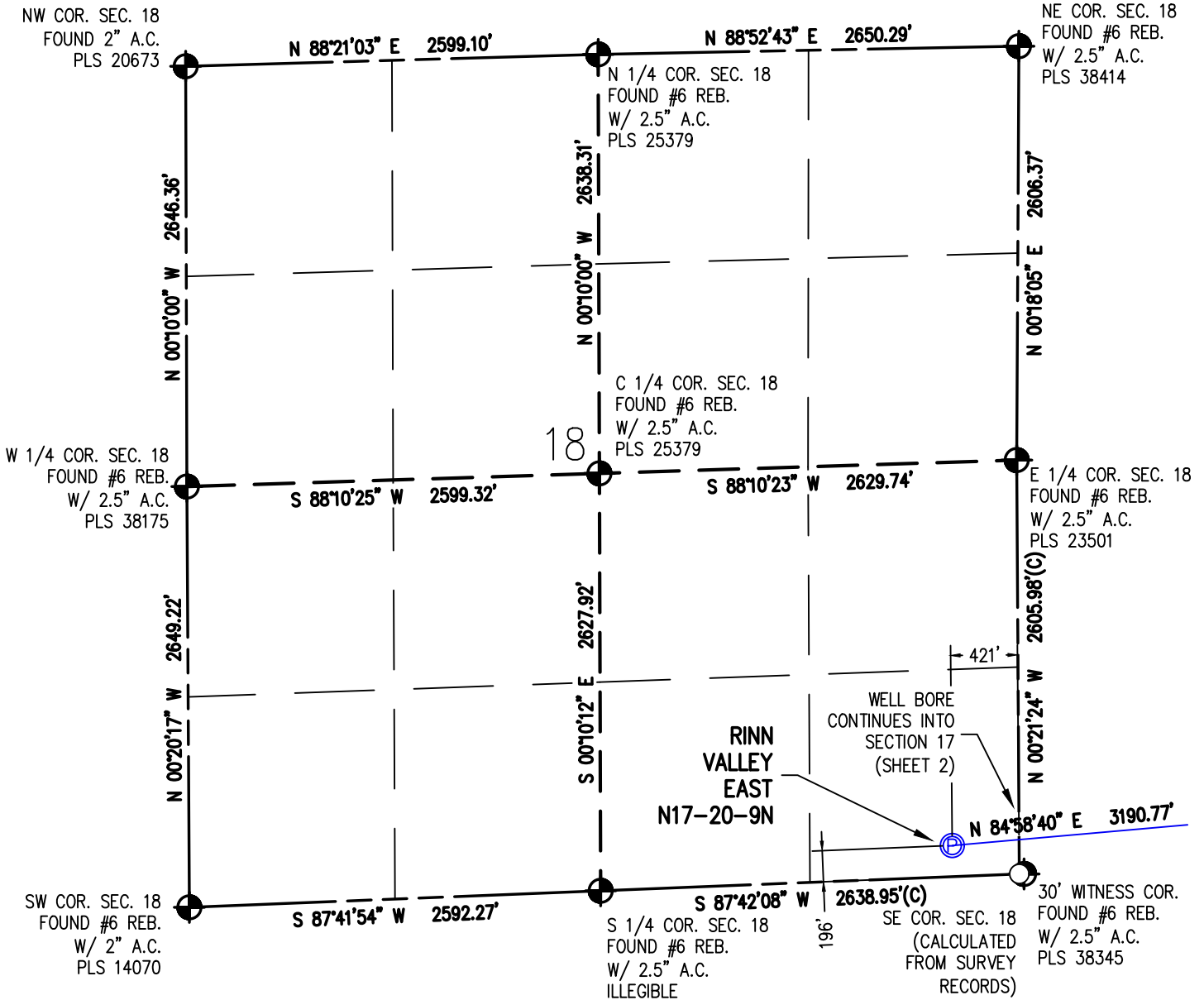


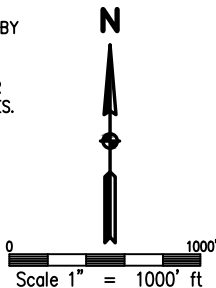
# WELL LOCATION PLAT RINN VALLEY EAST N17-20-9N

SE 1/4 SE 1/4 SEC. 18, T2N, R68W, 6TH P.M.



I HEREBY CERTIFY THAT THIS WELL LOCATION CERTIFICATE WAS PREPARED BY ME, OR UNDER MY DIRECT SUPERVISION, THAT THE FIELD WORK WAS COMPLETED ON 1/30/2018, THAT IT IS NOT A LAND SURVEY PLAT OR AN IMPROVEMENT SURVEY PLAT, AND THAT IT IS NOT TO BE RELIED UPON FOR ESTABLISHMENT OF FENCE, BUILDING OR OTHER FUTURE IMPROVEMENT LINES.

AARON A. DEMO  
Professional Land Surveyor Registration No. 38285  
State of Colorado  
FOR AND ON BEHALF OF BASELINE ENGINEERING CORP.



SURFACE LOCATION  
SEC. 18, T2N, R68W  
GROUND ELEVATION = 4936.1'  
PDOP = 1.2  
LATITUDE = 40.132043°  
LONGITUDE = -105.038174°  
196' FSL, 421' FEL  
ENTRY POINT LOCATION  
SEC. 17, T2N, R68W  
LATITUDE = 40.132764°  
LONGITUDE = -105.026801°  
460' FSL, 2560' FEL  
BOTTOM HOLE LOCATION  
SEC. 8, T2N, R68W  
LATITUDE = 40.159284°  
LONGITUDE = -105.026783°  
460' FNL, 2560' FEL

## NOTES:

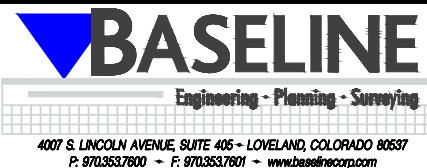
1. INDICATES SECTION CORNER
2. INDICATES CALCULATED CORNER
3. (C) INDICATES CALCULATED DIMENSION
4. ELEVATION BASED ON NAVD88 (GEOID12B)
5. BEARINGS DERIVED FROM COLORADO COORDINATE SYSTEM OF 1983 NORTH ZONE.
6. OPERATOR: TRAVIS WINNICKI
7. IMPROVEMENTS: SEE LOCATION DRAWING FOR ALL VISIBLE IMPROVEMENTS WITHIN 500' OF DISTURBED AREA.
8. WELL FOOTAGES ARE MEASURED AT RIGHT ANGLES TO THE SECTION LINES.

## NEAREST CULTURAL ITEMS:

BUILDING: 2020' SW  
BUILDING UNIT: 2142' W  
HIGH OCCUPANCY BUILDING UNIT: 5280'+  
DESIGNATED OUTSIDE ACTIVITY AREA: 5280'+  
PUBLIC ROAD: WELD COUNTY ROAD 20 1/2 2404' N  
ABOVE GROUND UTILITY: 2514' SW  
RAILROAD: 5280'+  
PROPERTY LINE: 196' S  
SURFACE USE: CROP LAND.  
NEAREST EXISTING WELL: WILLIAMS 18-16 959' N



DRAWN BY	BGR	CHECKED BY	AAD
INITIAL SUBMITTAL	3/9/2018		
REVISED	3/16/2018		
DRAWING SIZE	8.5" X 11"		
JOB NO.	EXT02N68W17-01		
SHEET	1 OF 3		

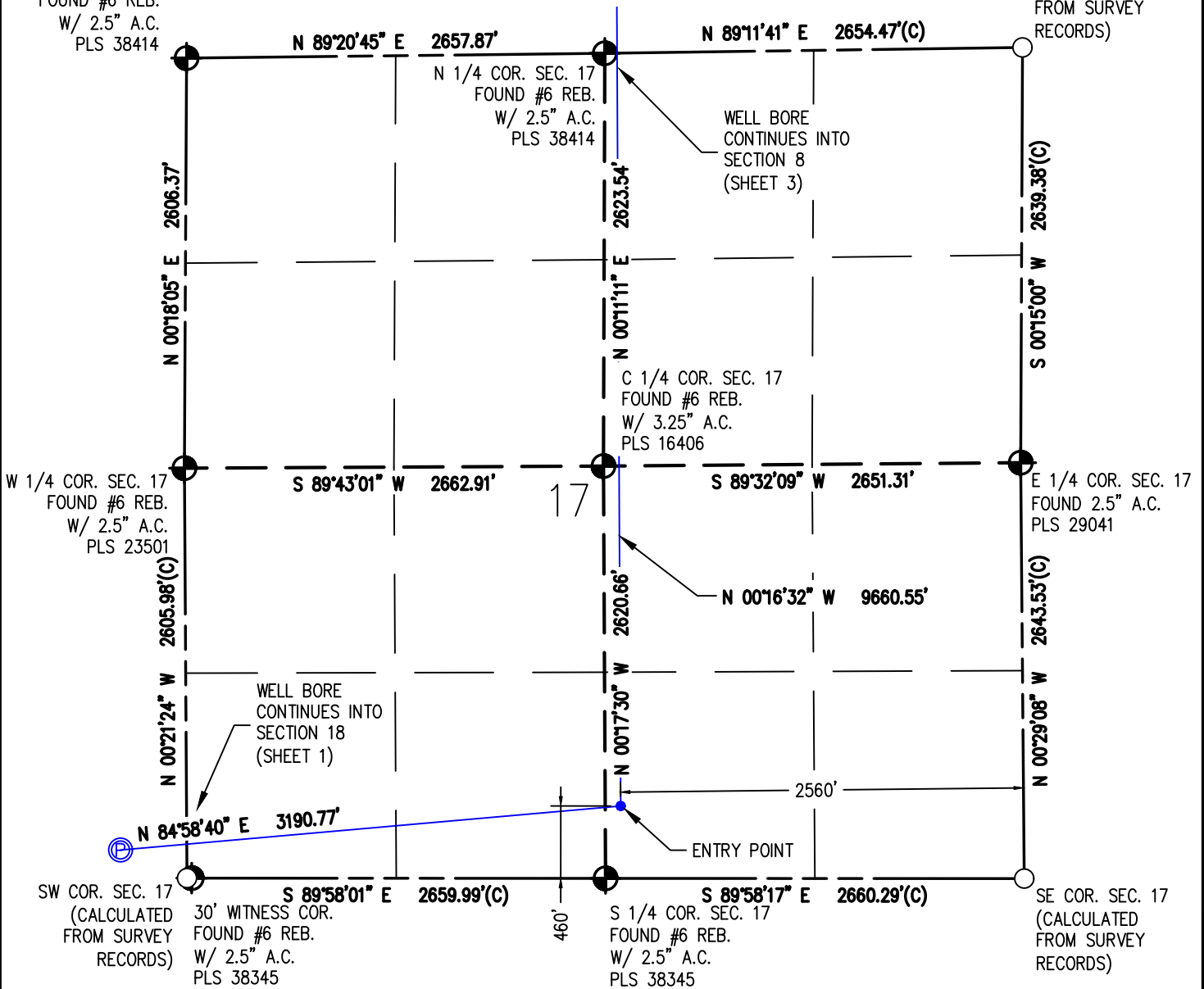


# WELL LOCATION PLAT RINN VALLEY EAST N17-20-9N

SE 1/4 SEC. 18, T2N, R68W, 6TH P.M.

NW COR. SEC. 17  
FOUND #6 REB.  
W/ 2.5" A.C.  
PLS 38414

NE COR. SEC. 17  
(CALCULATED  
FROM SURVEY  
RECORDS)



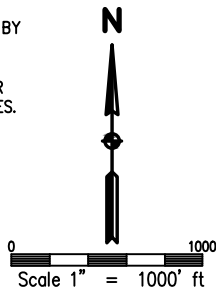
## NOTES:

1. INDICATES SECTION CORNER
2. INDICATES CALCULATED CORNER
3. (C) INDICATES CALCULATED DIMENSION
4. ELEVATION BASED ON NAVD88 (GEOID12B)
5. BEARINGS DERIVED FROM COLORADO COORDINATE SYSTEM OF 1983 NORTH ZONE.
6. OPERATOR: TRAVIS WINNICKI
7. IMPROVEMENTS: SEE LOCATION DRAWING FOR ALL VISIBLE IMPROVEMENTS WITHIN 500' OF DISTURBED AREA.
8. WELL FOOTAGES ARE MEASURED AT RIGHT ANGLES TO THE SECTION LINES.

SURFACE LOCATION  
SEC. 18, T2N, R68W  
GROUND ELEVATION = 4936.1'  
PDOP = 1.2  
LATITUDE = 40.132043°  
LONGITUDE = -105.038174°  
196' FSL, 421' FEL  
ENTRY POINT LOCATION  
SEC. 17, T2N, R68W  
LATITUDE = 40.132764°  
LONGITUDE = -105.026801°  
460' FSL, 2560' FEL  
BOTTOM HOLE LOCATION  
SEC. 8, T2N, R68W  
LATITUDE = 40.159284°  
LONGITUDE = -105.026783°  
460' FNL, 2560' FEL

I HEREBY CERTIFY THAT THIS WELL LOCATION CERTIFICATE WAS PREPARED BY ME, OR UNDER MY DIRECT SUPERVISION, THAT THE FIELD WORK WAS COMPLETED ON 1/30/2018, THAT IT IS NOT A LAND SURVEY PLAT OR AN IMPROVEMENT SURVEY PLAT, AND THAT IT IS NOT TO BE RELIED UPON FOR ESTABLISHMENT OF FENCE, BUILDING OR OTHER FUTURE IMPROVEMENT LINES.

AARON A. DEMO  
Professional Land Surveyor Registration No. 38285  
State of Colorado  
FOR AND ON BEHALF OF BASELINE ENGINEERING CORP.



## NEAREST CULTURAL ITEMS:

BUILDING: 2020' SW  
BUILDING UNIT: 2142' W  
HIGH OCCUPANCY BUILDING UNIT: 5280'+  
DESIGNATED OUTSIDE ACTIVITY AREA: 5280'+  
PUBLIC ROAD: WELD COUNTY ROAD 20 1/2 2404' N  
ABOVE GROUND UTILITY: 2514' SW  
RAILROAD: 5280'+  
PROPERTY LINE: 196' S  
SURFACE USE: CROP LAND.  
NEAREST EXISTING WELL: WILLIAMS 18-16 959' N



DRAWN BY	BGR	CHECKED BY	AAD
INITIAL SUBMITTAL	3/9/2018		
REVISED	3/16/2018		
DRAWING SIZE	8.5" X 11"		
JOB NO.	EXT02N68W17-01		
SHEET	2 OF 3		

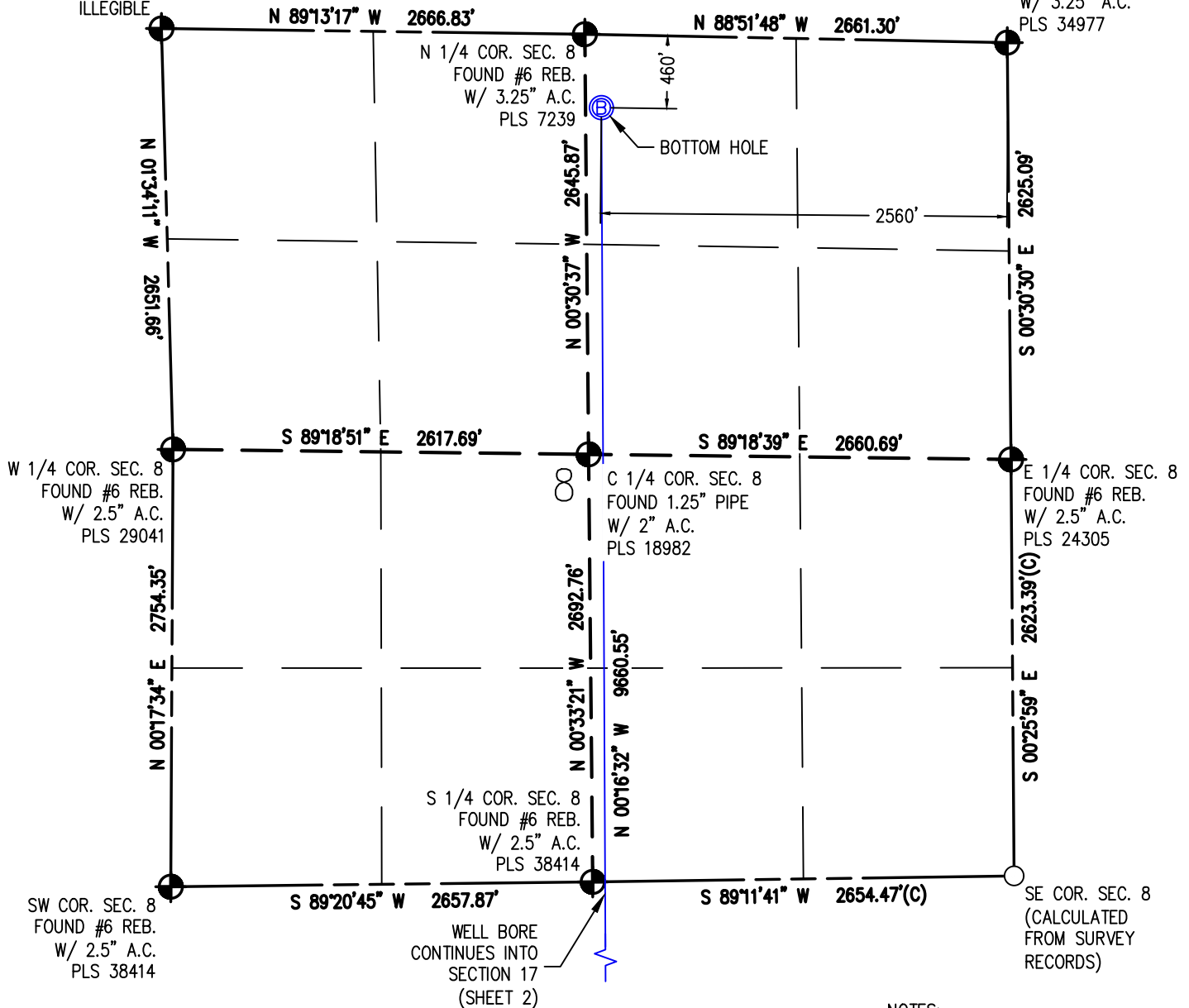


# WELL LOCATION PLAT RINN VALLEY EAST N17-20-9N

SE 1/4 SEC. 18, T2N, R68W, 6TH P.M.

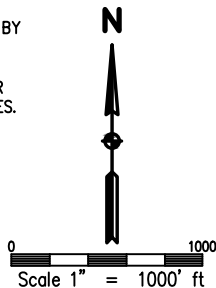
NW COR. SEC. 8  
FOUND 3.25" A.C.  
ILLEGIBLE

NE COR. SEC. 8  
FOUND #6 REB.  
W/ 3.25" A.C.  
PLS 34977



I HEREBY CERTIFY THAT THIS WELL LOCATION CERTIFICATE WAS PREPARED BY ME, OR UNDER MY DIRECT SUPERVISION, THAT THE FIELD WORK WAS COMPLETED ON 1/30/2018, THAT IT IS NOT A LAND SURVEY PLAT OR AN IMPROVEMENT SURVEY PLAT, AND THAT IT IS NOT TO BE RELIED UPON FOR ESTABLISHMENT OF FENCE, BUILDING OR OTHER FUTURE IMPROVEMENT LINES.

AARON A. DEMO  
Professional Land Surveyor Registration No. 38285  
State of Colorado  
FOR AND ON BEHALF OF BASELINE ENGINEERING CORP.



SURFACE LOCATION  
SEC. 18, T2N, R68W  
GROUND ELEVATION = 4936.1'  
PDOP = 1.2  
LATITUDE = 40.132043°  
LONGITUDE = -105.038174°  
196' FSL, 421' FEL  
ENTRY POINT LOCATION  
SEC. 17, T2N, R68W  
LATITUDE = 40.132764°  
LONGITUDE = -105.026801°  
460' FSL, 2560' FEL  
BOTTOM HOLE LOCATION  
SEC. 8, T2N, R68W  
LATITUDE = 40.159284°  
LONGITUDE = -105.026783°  
460' FNL, 2560' FEL

## NOTES:

1. INDICATES SECTION CORNER
2. INDICATES CALCULATED CORNER
3. (C) INDICATES CALCULATED DIMENSION
4. ELEVATION BASED ON NAVD88 (GEOID12B)
5. BEARINGS DERIVED FROM COLORADO COORDINATE SYSTEM OF 1983 NORTH ZONE.
6. OPERATOR: TRAVIS WINNICKI
7. IMPROVEMENTS: SEE LOCATION DRAWING FOR ALL VISIBLE IMPROVEMENTS WITHIN 500' OF DISTURBED AREA.
8. WELL FOOTAGES ARE MEASURED AT RIGHT ANGLES TO THE SECTION LINES.

## NEAREST CULTURAL ITEMS:

BUILDING: 2020' SW  
BUILDING UNIT: 2142' W  
HIGH OCCUPANCY BUILDING UNIT: 5280'+  
DESIGNATED OUTSIDE ACTIVITY AREA: 5280'+  
PUBLIC ROAD: WELD COUNTY ROAD 20 1/2 2404' N  
ABOVE GROUND UTILITY: 2514' SW  
RAILROAD: 5280'+  
PROPERTY LINE: 196' S  
SURFACE USE: CROP LAND.  
NEAREST EXISTING WELL: WILLIAMS 18-16 959' N



DRAWN BY	BGR	CHECKED BY	AAD
INITIAL SUBMITTAL	3/9/2018		
REVISED	3/16/2018		
DRAWING SIZE	8.5" X 11"		
JOB NO.	EXT02N68W17-01		
SHEET	3 of 3		

**BASELINE**  
Engineering - Planning - Surveying

4007 S. LINCOLN AVENUE, SUITE 405 - LOVELAND, COLORADO 80537  
P: 970.353.7800 - F: 970.353.7801 - [www.baselinecorp.com](http://www.baselinecorp.com)