

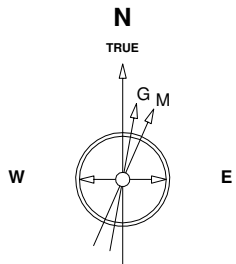
Great Western Operating Company, LLC

Location Colorado
Field Wattenburg
Installation Tower

Slot Slot N15 - Tower LD 19-182HC
Well Tower LD 19-182HC
Wellbore Tower LD 19-182HC (PWB)

Created by admin
Date plotted 15-May-2017

Plot reference is Tower LD 19-182HC (PWB).
Ref wellpath is Tower LD 19-182HC (PWP#1).
Coordinates are in Feet reference Slot N15 - Tower LD 19-182HC.
True Vertical Depths are reference Rig Datum.
Measured Depths are reference Rig Datum.
Rig Datum: Planned Datum #1
Rig Datum to Mean Sea Level: 5259.60 ft.
Plot North is aligned to TRUE North.



Scale 1 cm = 400 ft

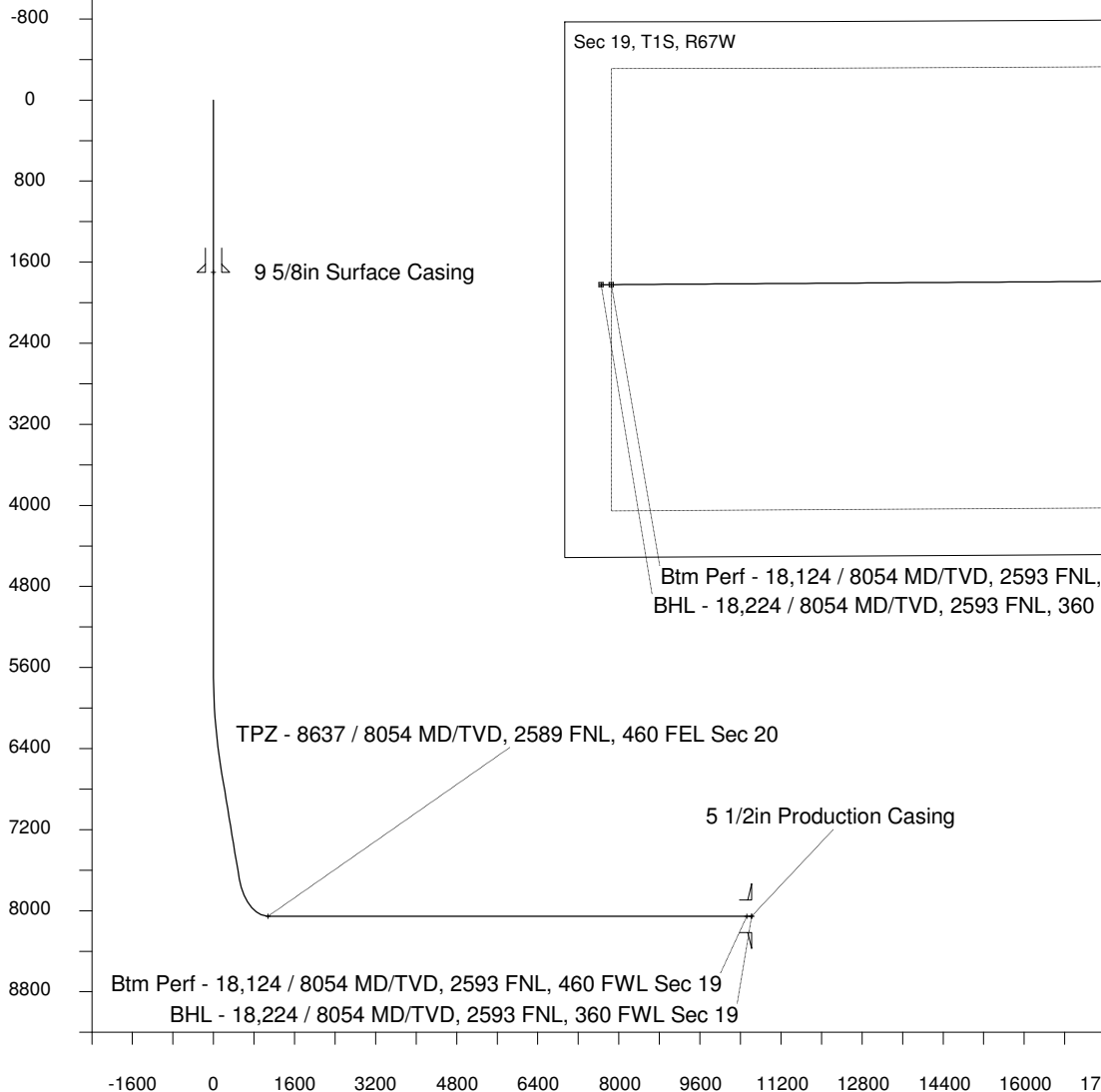
East (Feet) ->

-13600 -12800 -12000 -11200 -10400 -9600 -8800 -8000 -7200 -6400 -5600 -4800 -4000 -3200 -2400 -1600 -800 0 800 1600

10-May-2017
IGRF Model [1900.0-2020.0] Dip: 66.48 deg Field: 52154.2 nT
Lat: N39 57 11.0916 Long: W104 54 7.2792 Elev: 5239.60 ft
Magnetic North is 8.26 deg East of TRUE North
To correct azimuth from Magnetic to TRUE add 8.26 deg

<- True Vertical Depth (Feet)

Scale 1 cm = 400 ft



Scale 1 cm = 800 ft

Vertical Section (Feet) ->

Azimuth 264.48 with reference 0.00 N, 0.00 E from Slot N15 - Tower LD 19-182HC

<- North(Feet)

Scale 1 cm = 400 ft

WELL PROFILE DATA

Point	MD	Inc	Azi	TVD	North	East	deg/100ft	V. Sect
Tie on	0.00	0.00	0.00	0.00	S 0.00	W 0.00		-0.00
KOP	5638.00	0.00	209.57	5638.00	S 0.00	W 0.00	0.00	-0.00
End of Build	6638.03	30.00	209.57	6592.95	S 222.55	W 126.29	9.84	147.12
End of Hold	7881.14	30.00	209.57	7669.51	S 763.14	W 433.07	0.00	504.47
Target TPZ - ...Sec 20	8636.57	90.00	269.62	8054.00	S 959.14	W 986.61	32.81	1074.29
Target Btm Pe...Sec 19	18123.55	90.00	269.62	8054.00	S 1021.80	W 10473.38	0.00	10523.10
End of Turn	18126.48	90.00	270.00	8054.00	S 1021.81	W 10476.32	42.65	10526.03
T.D. & Target BHL... 19	18223.55	90.00	270.00	8054.00	S 1021.80	W 10573.38	0.00	10622.64