

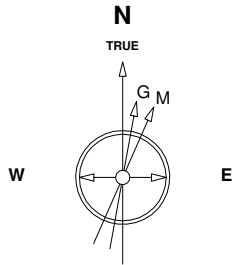
Great Western Operating Company, LLC

Location Colorado
Field Wattenburg
Installation Tower

Slot Slot N14 - Tower LD 19-179HNX
Well Tower LD 19-179HNX
Wellbore Tower LD 19-179HNX (PWB)

Created by admin
Date plotted 15-May-2017

Plot reference is Tower LD 19-179HNX (PWB).
Ref wellpath is Tower LD 19-179HNX (PW/P#1).
Coordinates are in Feet reference Slot N14 - Tower LD 19-179HNX.
True Vertical Depths are reference Rig Datum.
Measured Depths are reference Rig Datum.
Rig Datum: Planned Datum #1
Rig Datum to Mean Sea Level: 5259.60 ft.
Plot North is aligned to TRUE North.



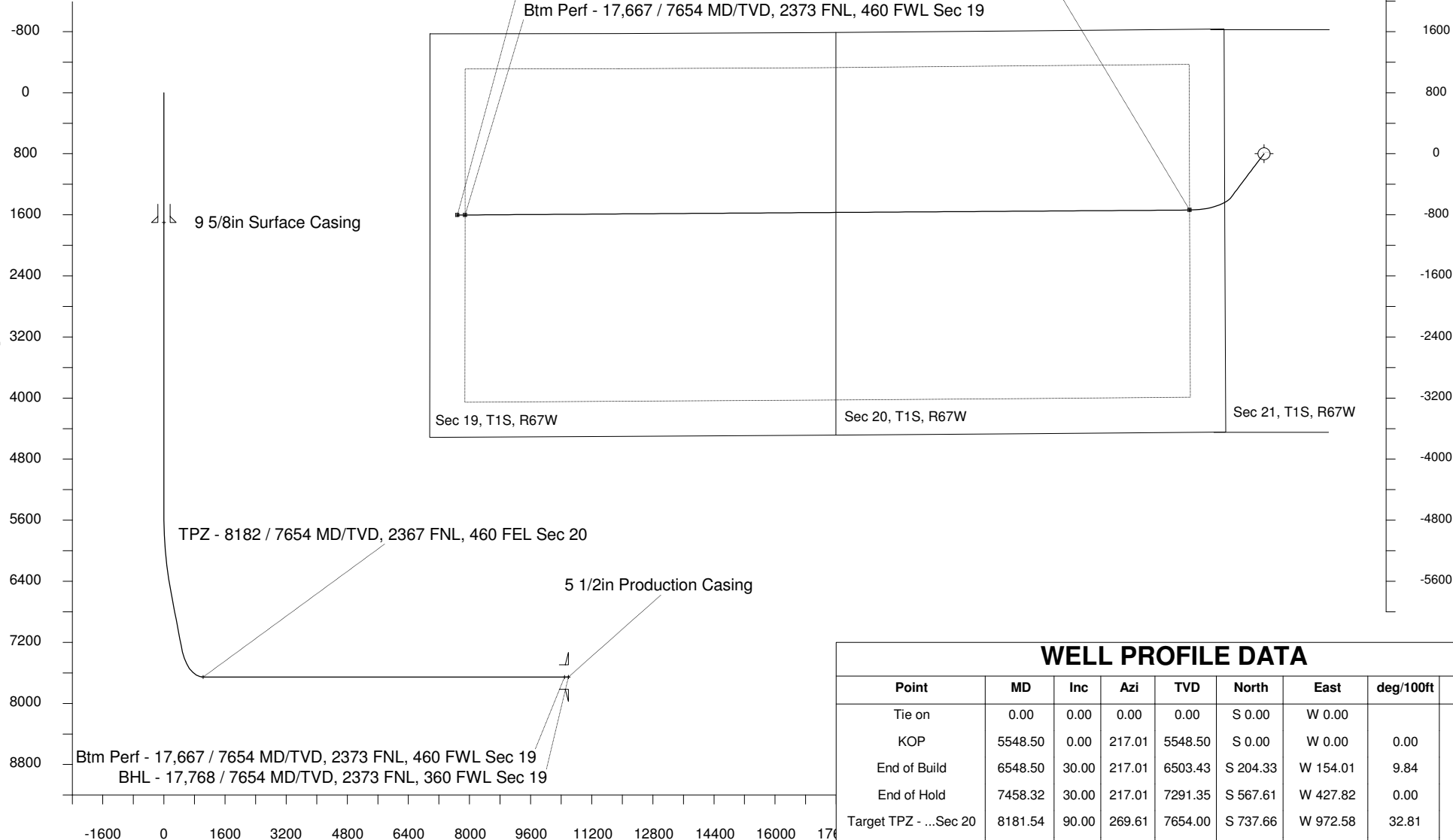
Scale 1 cm = 400 ft

East (Feet) ->

-13600 -12800 -12000 -11200 -10400 -9600 -8800 -8000 -7200 -6400 -5600 -4800 -4000 -3200 -2400 -1600 -800 0 800 1600

10-May-2017
IGRF Model [1900.0-2020.0] Dip: 66.48 deg Field: 52154.2 nT
Lat: N39 57 11.0916 Long: W104 54 7.2792 Elev: 5239.60 ft
Magnetic North is 8.26 deg East of TRUE North
To correct azimuth from Magnetic to TRUE add 8.26 deg

Scale 1 cm = 400 ft
<- True Vertical Depth (Feet)



<- North(Feet)
Scale 1 cm = 400 ft

WELL PROFILE DATA

Point	MD	Inc	Azi	TVD	North	East	deg/100ft	V. Sect
Tie on	0.00	0.00	0.00	0.00	S 0.00	W 0.00		-0.00
KOP	5548.50	0.00	217.01	5548.50	S 0.00	W 0.00	0.00	-0.00
End of Build	6548.50	30.00	217.01	6503.43	S 204.33	W 154.01	9.84	169.05
End of Hold	7458.32	30.00	217.01	7291.35	S 567.61	W 427.82	0.00	469.59
Target TPZ - ...Sec 20	8181.54	90.00	269.61	7654.00	S 737.66	W 972.58	32.81	1025.67
Target Btm Pe...Sec 19	17667.61	90.00	269.61	7654.00	S 802.14	W 10458.43	0.00	10489.14
End of Turn	17670.65	90.00	270.01	7654.00	S 802.15	W 10461.47	42.65	10492.17
T.D. & Target BHL... 19	17767.61	90.00	270.01	7654.00	S 802.14	W 10558.43	0.00	10588.86

Scale 1 cm = 800 ft
Vertical Section (Feet) ->
Azimuth 265.66 with reference 0.00 N, 0.00 E from Slot N14 - Tower LD 19-179HNX