

McElwain #44-17A

Township/Range: 17 001-S

SESE 17 1S67W 6 PM

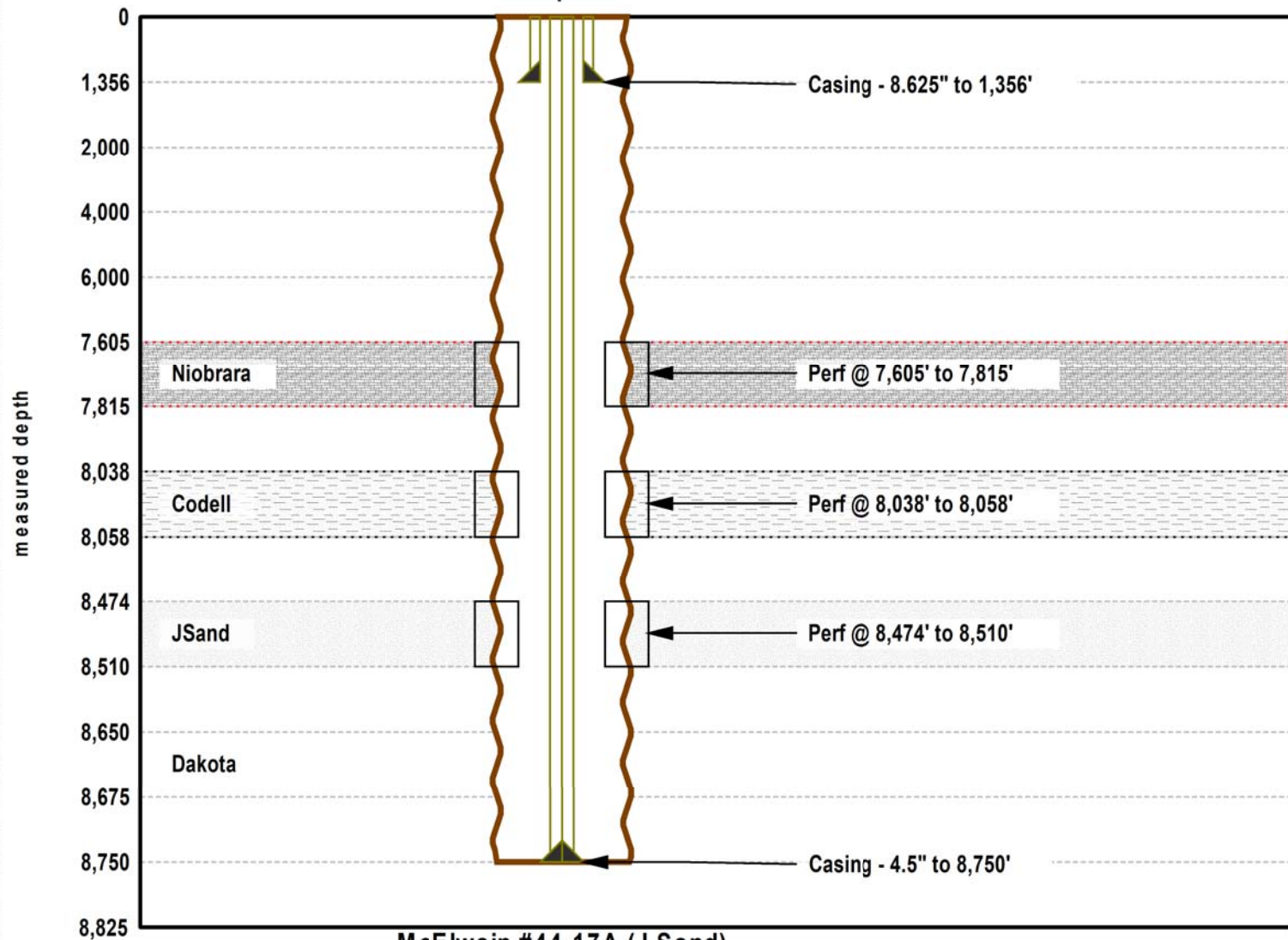
Latitude/Longitude: N39.95805600, W -104.90472200:

39.958056/-104.904722

County: Adams, State: CO

Spud Date: 10/29/2002

Total Depth: 8750



McElwain #44-17A (J Sand)
Initial Completion: 12/30/1899