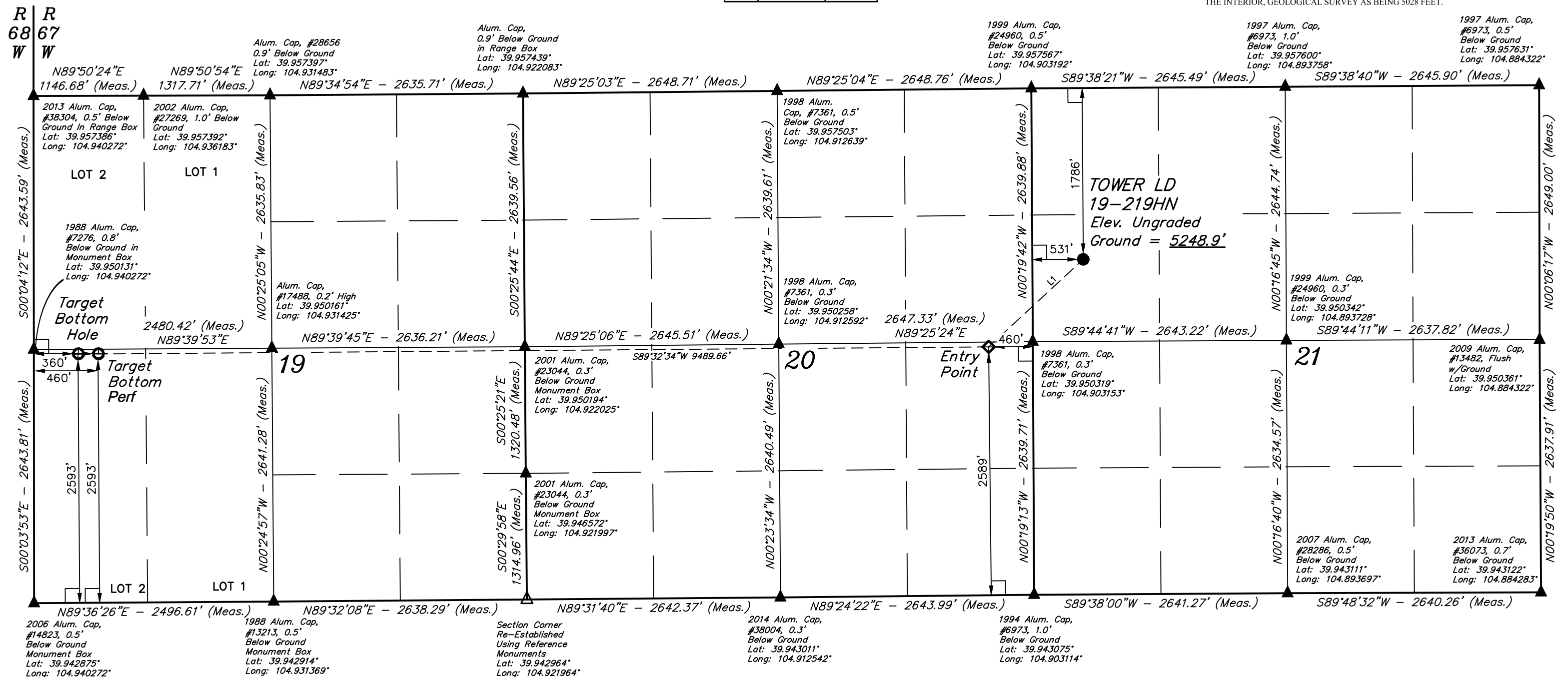








GREAT WESTERN OPERATING COMPANY

BASIS OF BEARINGS

BASIS OF BEARINGS IS A G.P.S. OBSERVATION

LINE TABLE		
LINE	DIRECTION	LENGTH
L1	S47°12'04"W	1343.58'



 = 90° SYMBOL
 = PROPOSED WELLHEAD.
 = TARGET BOTTOM HOLE - BOTTOM PERF
 = ENTRY POINT.
 = SECTION CORNERS LOCATED. (NAD 83)
 = SECTION CORNERS RE-ESTABLISHED.
 (Not Set on Ground.) (NAD 83)

CERTIFICATE
 ABOVE MAP WAS PREPARED FROM FIELD
 MADE TO ME OR UNDER MY SUPERVISION
 AND CONFORMS TO THE BEST OF MY
 KNOWLEDGE
 28285
 REGISTERED LAND SURVEYOR
 REGISTRATION NO. 28285
 STATE OF COLORADO
 12-16

NAD 83 (SURFACE LOCATION)	NAD 83 (ENTRY POINT)	NAD 83 (TARGET BOTTOM HOLE)
LATITUDE = 39°57'09.62" (39.952672)	LATITUDE = 39°57'00.61" (39.950169)	LATITUDE = 39°56' 59.9996" (39.950000)
LONGITUDE = 104°54'04.58" (104.901272)	LONGITUDE = 104°54'17.25" (104.904792)	LONGITUDE = 104°56' 20.3556" (104.938988)

PDOP = 1.2



UELS, LLC
Corporate Office * 85 South 200 East
Vernal, UT 84078 * (435) 789-1017

SURVEYED BY	GREG WEIMER, J.C.	11-22-16	SCALE
DRAWN BY	L.C.S.	11-28-16	1" = 1000'

WELL LOCATION PLAT