

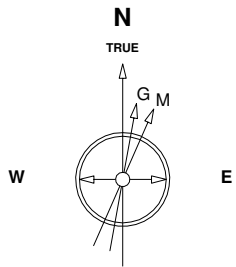
Great Western Operating Company, LLC

Location Colorado
Field Wattenburg
Installation Tower

Slot Slot S13 - Tower LD 19-222HNX
Well Tower LD 19-222HNX
Wellbore Tower LD 19-222HNX (PWB)

Created by admin
Date plotted 15-May-2017

Plot reference is Tower LD 19-222HNX (PWB).
Ref wellpath is Tower LD 19-222HNX (PW/P#1).
Coordinates are in Feet reference Slot S13 - Tower LD 19-222HNX.
True Vertical Depths are reference Rig Datum.
Measured Depths are reference Rig Datum.
Rig Datum: Planned Datum #1
Rig Datum to Mean Sea Level: 5259.60 ft.
Plot North is aligned to TRUE North.



Scale 1 cm = 400 ft

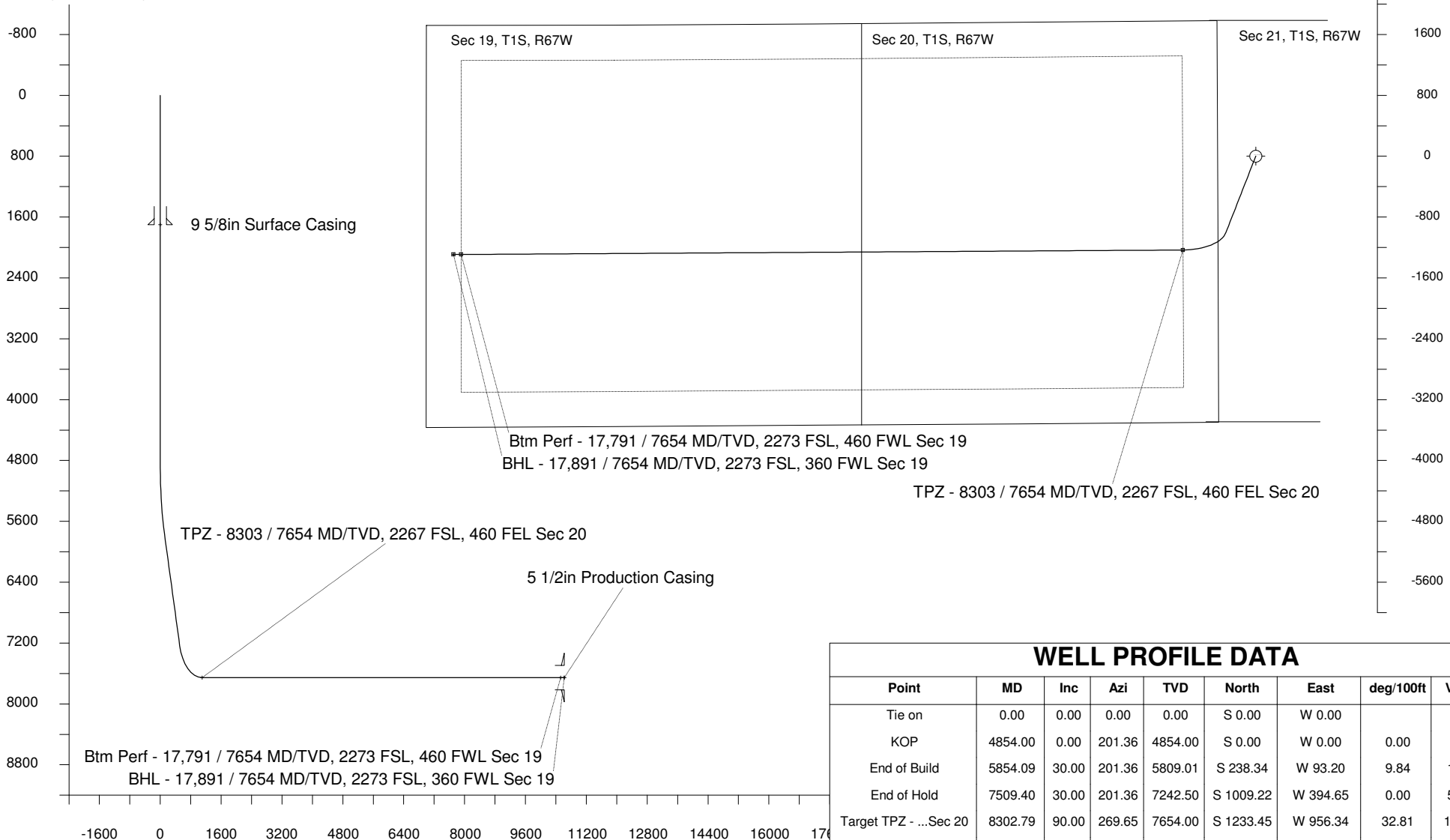
East (Feet) ->

-13600 -12800 -12000 -11200 -10400 -9600 -8800 -8000 -7200 -6400 -5600 -4800 -4000 -3200 -2400 -1600 -800 0 800 1600

10-May-2017
IGRF Model [1900.0-2020.0] Dip: 66.48 deg Field: 52154.2 nT
Lat: N39 57 11.0916 Long: W104 54 7.2792 Elev: 5239.60 ft
Magnetic North is 8.26 deg East of TRUE North
To correct azimuth from Magnetic to TRUE add 8.26 deg

Scale 1 cm = 400 ft

<- True Vertical Depth (Feet)



<- North(Feet)

Scale 1 cm = 400 ft

WELL PROFILE DATA

Point	MD	Inc	Azi	TVD	North	East	deg/100ft	V. Sect
Tie on	0.00	0.00	0.00	0.00	S 0.00	W 0.00		-0.00
KOP	4854.00	0.00	201.36	4854.00	S 0.00	W 0.00	0.00	-0.00
End of Build	5854.09	30.00	201.36	5809.01	S 238.34	W 93.20	9.84	121.50
End of Hold	7509.40	30.00	201.36	7242.50	S 1009.22	W 394.65	0.00	514.47
Target TPZ - ...Sec 20	8302.79	90.00	269.65	7654.00	S 1233.45	W 956.34	32.81	1099.27
Target Btm Pe...Sec 19	17791.31	90.00	269.65	7654.00	S 1292.11	W 10444.68	0.00	10524.29
End of Turn	17794.05	90.00	270.00	7654.00	S 1292.11	W 10447.43	42.65	10527.02
T.D. & Target BHL... 19	17891.31	90.00	270.00	7654.00	S 1292.11	W 10544.68	0.00	10623.55