

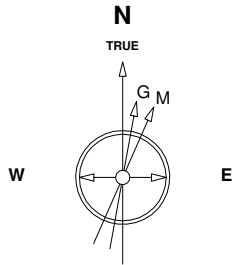
Great Western Operating Company, LLC

Location Colorado
Field Wattenburg
Installation Tower

Slot Slot S08 - Tower LD 19-302HC
Well Tower LD 19-302HC
Wellbore Tower LD 19-302HC (PWB)

Created by admin
Date plotted 15-May-2017

Plot reference is Tower LD 19-302HC (PWB).
Ref wellpath is Tower LD 19-302HC (PWP#1).
Coordinates are in Feet reference Slot S08 - Tower LD 19-302HC.
True Vertical Depths are reference Rig Datum.
Measured Depths are reference Rig Datum.
Rig Datum: Planned Datum #1
Rig Datum to Mean Sea Level: 5259.60 ft.
Plot North is aligned to TRUE North.



Scale 1 cm = 400 ft

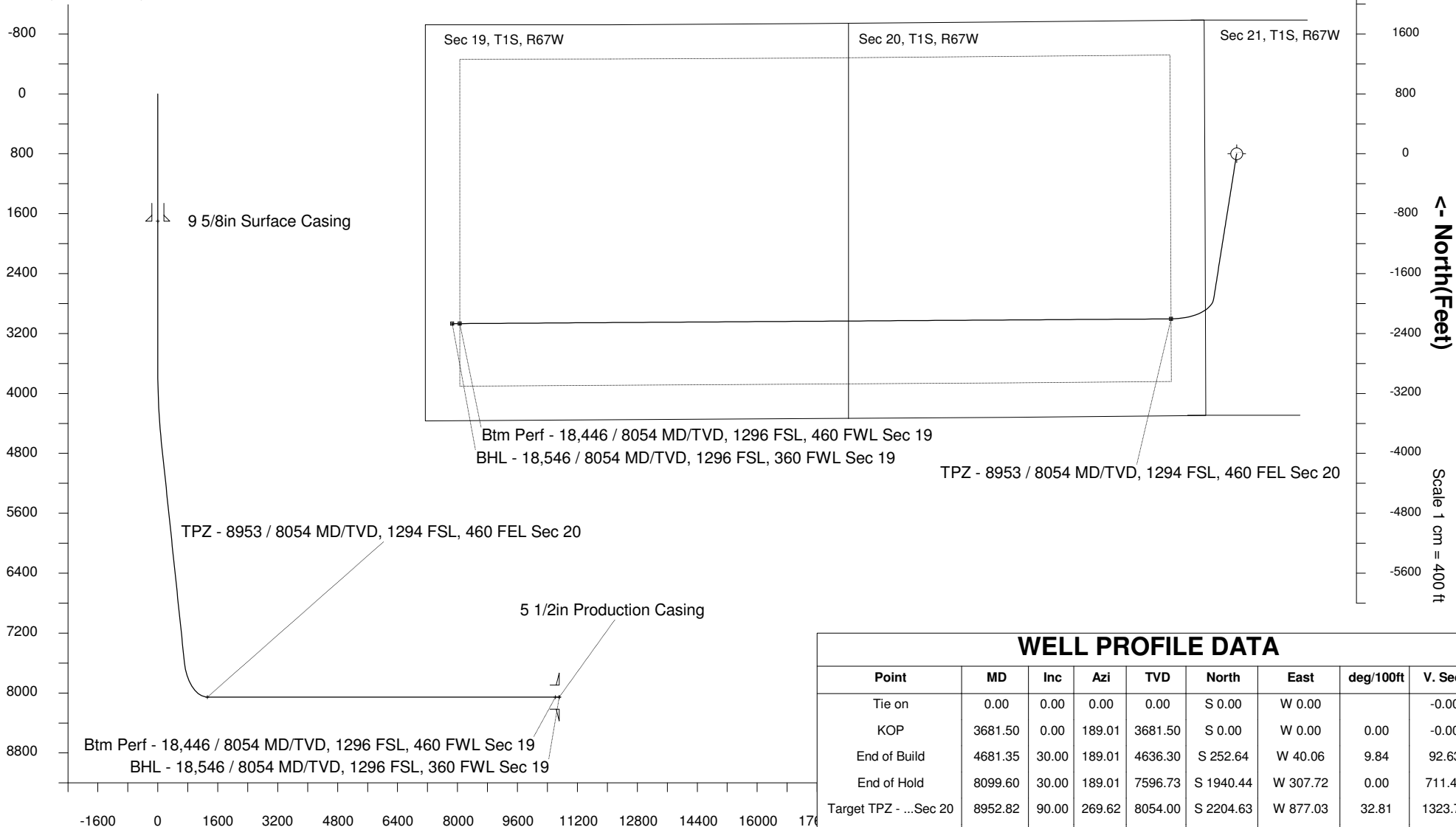
East (Feet) ->

-13600 -12800 -12000 -11200 -10400 -9600 -8800 -8000 -7200 -6400 -5600 -4800 -4000 -3200 -2400 -1600 -800 0 800 1600

10-May-2017
IGRF Model [1900.0-2020.0] Dip: 66.48 deg Field: 52154.2 nT
Lat: N39 57 11.0916 Long: W104 54 7.2792 Elev: 5239.60 ft
Magnetic North is 8.26 deg East of TRUE North
To correct azimuth from Magnetic to TRUE add 8.26 deg

Scale 1 cm = 400 ft

<- True Vertical Depth (Feet)



Scale 1 cm = 800 ft

Vertical Section (Feet) ->

Azimuth 257.78 with reference 0.00 N, 0.00 E from Slot S08 - Tower LD 19-302HC

WELL PROFILE DATA

Point	MD	Inc	Azi	TVD	North	East	deg/100ft	V. Sect
Tie on	0.00	0.00	0.00	0.00	S 0.00	W 0.00		-0.00
KOP	3681.50	0.00	189.01	3681.50	S 0.00	W 0.00	0.00	-0.00
End of Build	4681.35	30.00	189.01	4636.30	S 252.64	W 40.06	9.84	92.63
End of Hold	8099.60	30.00	189.01	7596.73	S 1940.44	W 307.72	0.00	711.45
Target TPZ - ...Sec 20	8952.82	90.00	269.62	8054.00	S 2204.63	W 877.03	32.81	1323.79
Target Btm Pe...Sec 19	18445.66	90.00	269.62	8054.00	S 2267.33	W 10369.67	0.00	10614.63
End of Turn	18448.59	90.00	270.00	8054.00	S 2267.34	W 10372.60	42.65	10617.50
T.D. & Target BHL... 19	18545.66	90.00	270.00	8054.00	S 2267.33	W 10469.67	0.00	10712.37