

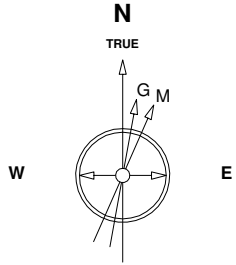
Great Western Operating Company, LLC

Location Colorado
Field Wattenburg
Installation Tower

Slot Slot S05 - Tower LD 19-342HNX
Well Tower LD 19-342HNX
Wellbore Tower LD 19-342HNX (PWB)

Created by admin
Date plotted 15-May-2017

Plot reference is Tower LD 19-342HNX (PWB).
Ref wellpath is Tower LD 19-342HNX (PW/P#1).
Coordinates are in Feet reference Slot S05 - Tower LD 19-342HNX.
True Vertical Depths are reference Rig Datum.
Measured Depths are reference Rig Datum.
Rig Datum: Planned Datum #1
Rig Datum to Mean Sea Level: 5259.60 ft.
Plot North is aligned to TRUE North.



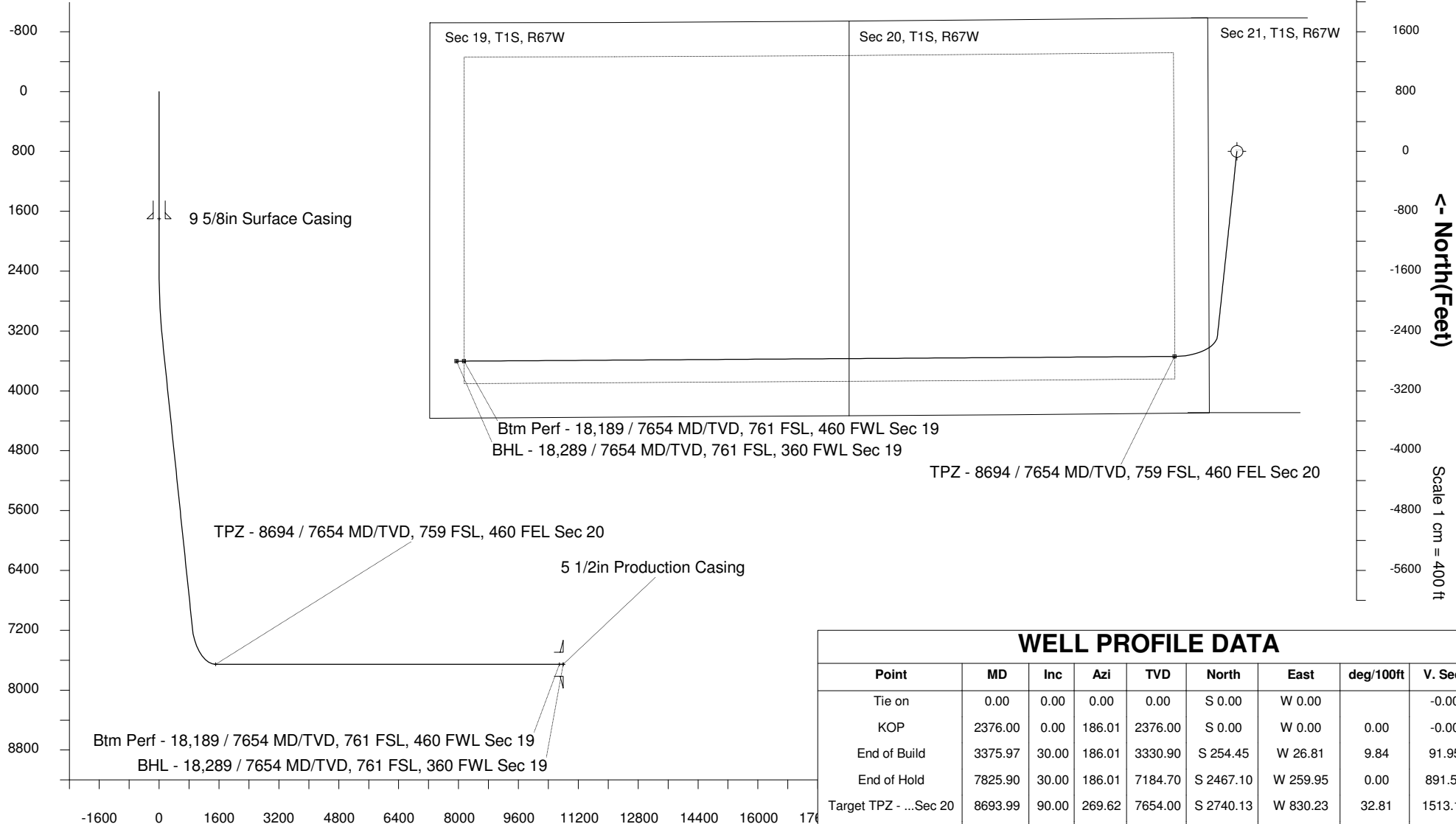
Scale 1 cm = 400 ft

East (Feet) ->

-13600 -12800 -12000 -11200 -10400 -9600 -8800 -8000 -7200 -6400 -5600 -4800 -4000 -3200 -2400 -1600 -800 0 800 1600

10-May-2017
IGRF Model [1900.0-2020.0] Dip: 66.48 deg Field: 52154.2 nT
Lat: N39 57 11.0916 Long: W104 54 7.2792 Elev: 5239.60 ft
Magnetic North is 8.26 deg East of TRUE North
To correct azimuth from Magnetic to TRUE add 8.26 deg

Scale 1 cm = 400 ft
-< True Vertical Depth (Feet)



Scale 1 cm = 800 ft

Vertical Section (Feet) ->

Azimuth 254.95 with reference 0.00 N, 0.00 E from Slot S05 - Tower LD 19-342HNX

WELL PROFILE DATA

Point	MD	Inc	Azi	TVD	North	East	deg/100ft	V. Sect
Tie on	0.00	0.00	0.00	0.00	S 0.00	W 0.00		-0.00
KOP	2376.00	0.00	186.01	2376.00	S 0.00	W 0.00	0.00	-0.00
End of Build	3375.97	30.00	186.01	3330.90	S 254.45	W 26.81	9.84	91.95
End of Hold	7825.90	30.00	186.01	7184.70	S 2467.10	W 259.95	0.00	891.57
Target TPZ - ...Sec 20	8693.99	90.00	269.62	7654.00	S 2740.13	W 830.23	32.81	1513.18
Target Btm Pe...Sec 19	18189.27	90.00	269.62	7654.00	S 2802.84	W 10325.31	0.00	10698.94
End of Turn	18192.23	90.00	270.01	7654.00	S 2802.85	W 10328.27	42.65	10701.80
T.D. & Target BHL... 19	18289.28	90.00	270.01	7654.00	S 2802.84	W 10425.31	0.00	10795.51