

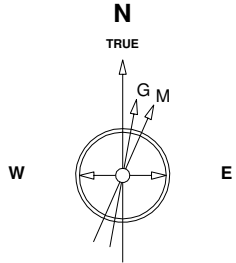
Great Western Operating Company, LLC

Location Colorado
Field Wattenburg
Installation Tower

Slot Slot S04 - Tower LD 19-379HC
Well Tower LD 19-379HC
Wellbore Tower LD 19-379HC (PWB)

Created by admin
Date plotted 15-May-2017

Plot reference is Tower LD 19-379HC (PWB).
Ref wellpath is Tower LD 19-379HC (PWP#1).
Coordinates are in Feet reference Slot S04 - Tower LD 19-379HC.
True Vertical Depths are reference Rig Datum.
Measured Depths are reference Rig Datum.
Rig Datum: Planned Datum #1
Rig Datum to Mean Sea Level: 5259.60 ft.
Plot North is aligned to TRUE North.



Scale 1 cm = 400 ft

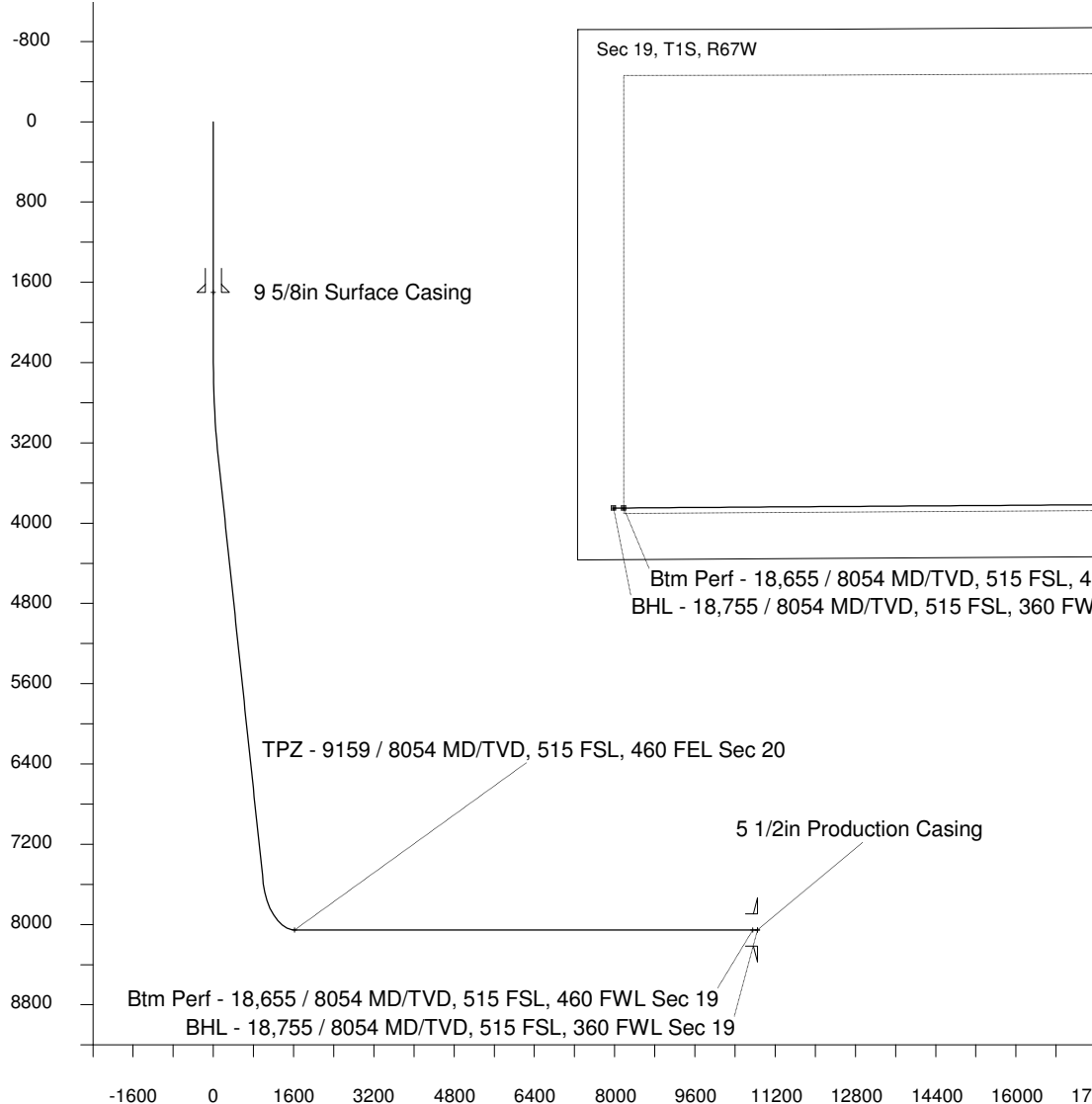
East (Feet) ->

-13600 -12800 -12000 -11200 -10400 -9600 -8800 -8000 -7200 -6400 -5600 -4800 -4000 -3200 -2400 -1600 -800 0 800 1600

10-May-2017
IGRF Model [1900.0-2020.0] Dip: 66.48 deg Field: 52154.2 nT
Lat: N39 57 11.0916 Long: W104 54 7.2792 Elev: 5239.60 ft
Magnetic North is 8.26 deg East of TRUE North
To correct azimuth from Magnetic to TRUE add 8.26 deg

<- True Vertical Depth (Feet)

Scale 1 cm = 400 ft



Scale 1 cm = 800 ft

Vertical Section (Feet) ->

Azimuth 253.68 with reference 0.00 N, 0.00 E from Slot S04 - Tower LD 19-379HC

<- North(Feet)

Scale 1 cm = 400 ft

WELL PROFILE DATA

Point	MD	Inc	Azi	TVD	North	East	deg/100ft	V. Sect
Tie on	0.00	0.00	0.00	0.00	S 0.00	W 0.00		-0.00
KOP	2359.00	0.00	185.14	2359.00	S 0.00	W 0.00	0.00	-0.00
End of Build	3358.87	30.00	185.14	3313.82	S 254.78	W 22.91	9.84	93.60
End of Hold	8286.16	30.00	185.14	7581.14	S 2708.24	W 243.55	0.00	994.92
Target TPZ - ...Sec 20	9158.55	90.00	269.61	8054.00	S 2983.83	W 813.97	32.81	1619.80
Target Btm Pe...Sec 19	18654.78	90.00	269.61	8054.00	S 3048.74	W 10309.99	0.00	10751.27
End of Turn	18657.84	90.00	270.01	8054.00	S 3048.75	W 10313.04	42.65	10754.21
T.D. & Target BHL... 19	18754.79	90.00	270.01	8054.00	S 3048.74	W 10409.99	0.00	10847.24