

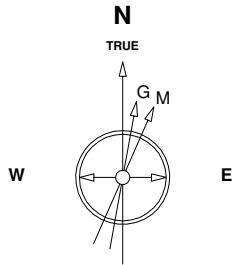
Great Western Operating Company, LLC

Location Colorado
Field Wattenburg
Installation Tower

Slot Slot N09 - Tower LD 19-102HNX
Well Tower LD 19-102HNX
Wellbore Tower LD 19-102HNX (PWB)

Created by admin
Date plotted 15-May-2017

Plot reference is Tower LD 19-102HNX (PWB).
Ref wellpath is Tower LD 19-102HNX (PW/P#1).
Coordinates are in Feet reference Slot N09 - Tower LD 19-102HNX.
True Vertical Depths are reference Rig Datum.
Measured Depths are reference Rig Datum.
Rig Datum: Planned Datum #1
Rig Datum to Mean Sea Level: 5259.60 ft.
Plot North is aligned to TRUE North.



Scale 1 cm = 400 ft

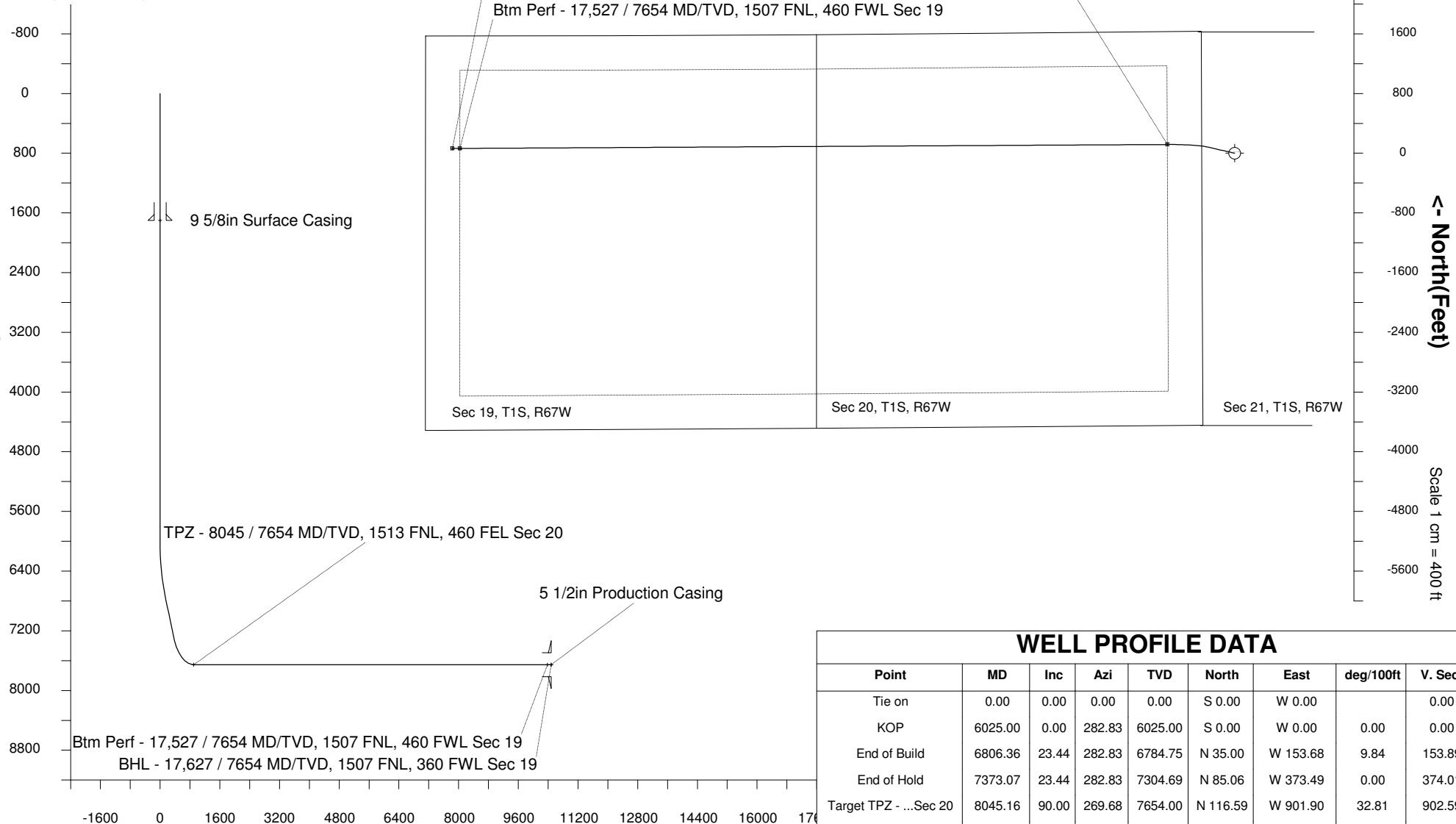
East (Feet) ->

-13600 -12800 -12000 -11200 -10400 -9600 -8800 -8000 -7200 -6400 -5600 -4800 -4000 -3200 -2400 -1600 -800 0 800 1600

10-May-2017
IGRF Model [1900.0-2020.0] Dip: 66.48 deg Field: 52154.2 nT
Lat: N39 57 11.0916 Long: W104 54 7.2792 Elev: 5239.60 ft
Magnetic North is 8.26 deg East of TRUE North
To correct azimuth from Magnetic to TRUE add 8.26 deg

Scale 1 cm = 400 ft

<- True Vertical Depth (Feet)



Scale 1 cm = 800 ft

Vertical Section (Feet) ->

Azimuth 270.35 with reference 0.00 N, 0.00 E from Slot N09 - Tower LD 19-102HNX

WELL PROFILE DATA

Point	MD	Inc	Azi	TVD	North	East	deg/100ft	V. Sect
Tie on	0.00	0.00	0.00	0.00	S 0.00	W 0.00		0.00
KOP	6025.00	0.00	282.83	6025.00	S 0.00	W 0.00	0.00	0.00
End of Build	6806.36	23.44	282.83	6784.75	N 35.00	W 153.68	9.84	153.89
End of Hold	7373.07	23.44	282.83	7304.69	N 85.06	W 373.49	0.00	374.01
Target TPZ - ...Sec 20	8045.16	90.00	269.68	7654.00	N 116.59	W 901.90	32.81	902.59
Target Btm Pe...Sec 19	17526.90	90.00	269.68	7654.00	N 64.10	W 10383.49	0.00	10383.69
End of Turn	17529.38	90.00	270.01	7654.00	N 64.09	W 10385.98	42.65	10386.17
T.D. & Target BHL... 19	17626.90	90.00	270.01	7654.00	N 64.10	W 10483.49	0.00	10483.69