

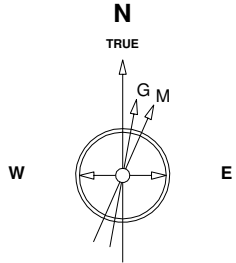
Great Western Operating Company, LLC

Location Colorado
Field Wattenburg
Installation Tower

Slot Slot N08 - Tower LD 19-099HC
Well Tower LD 19-099HC
Wellbore Tower LD 19-099HC (PWB)

Created by admin
Date plotted 15-May-2017

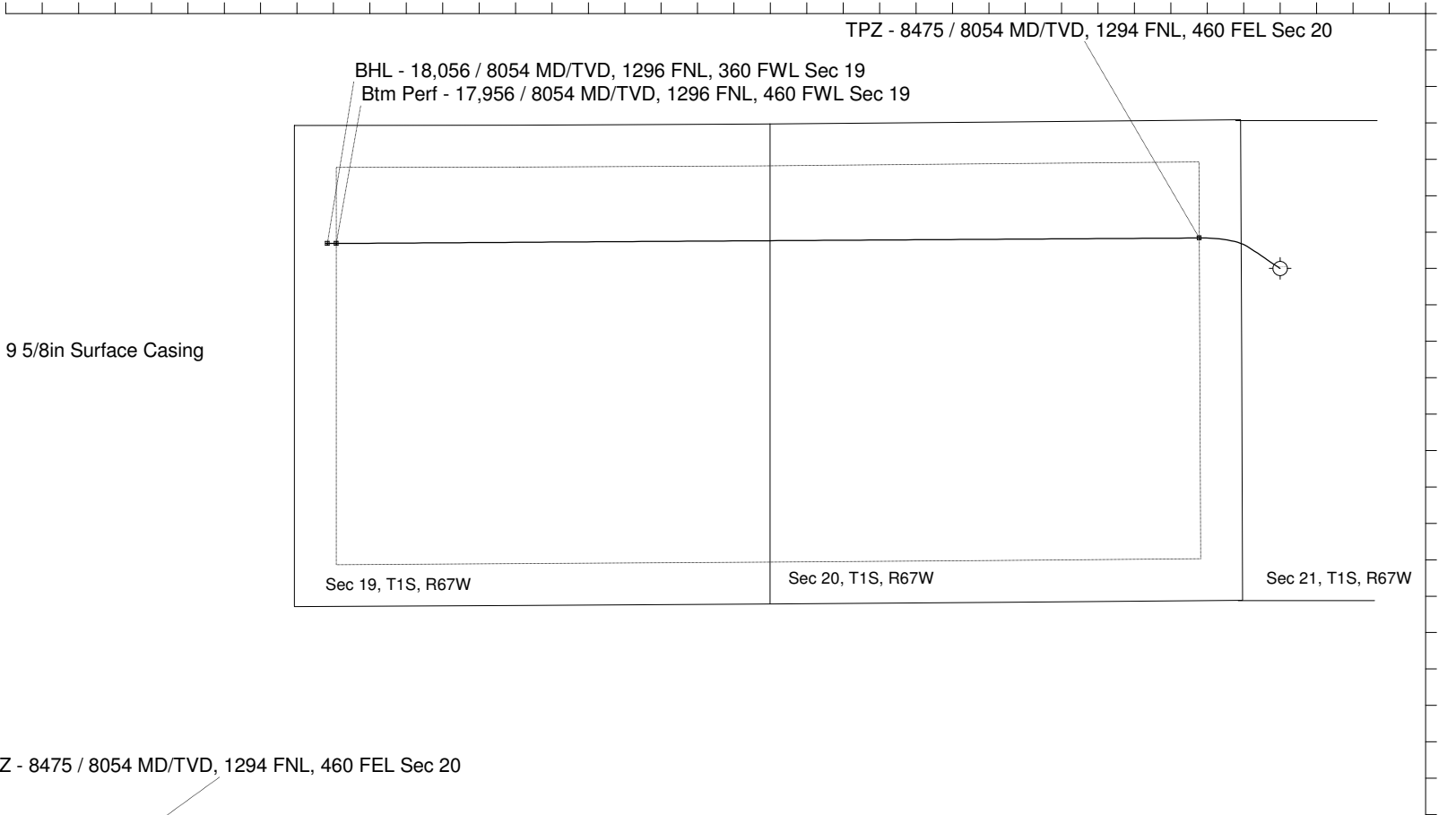
Plot reference is Tower LD 19-099HC (PWB).
Ref wellpath is Tower LD 19-099HC (PWP#1).
Coordinates are in Feet reference Slot N08 - Tower LD 19-099HC.
True Vertical Depths are reference Rig Datum.
Measured Depths are reference Rig Datum.
Rig Datum: Planned Datum #1
Rig Datum to Mean Sea Level: 5259.60 ft.
Plot North is aligned to TRUE North.



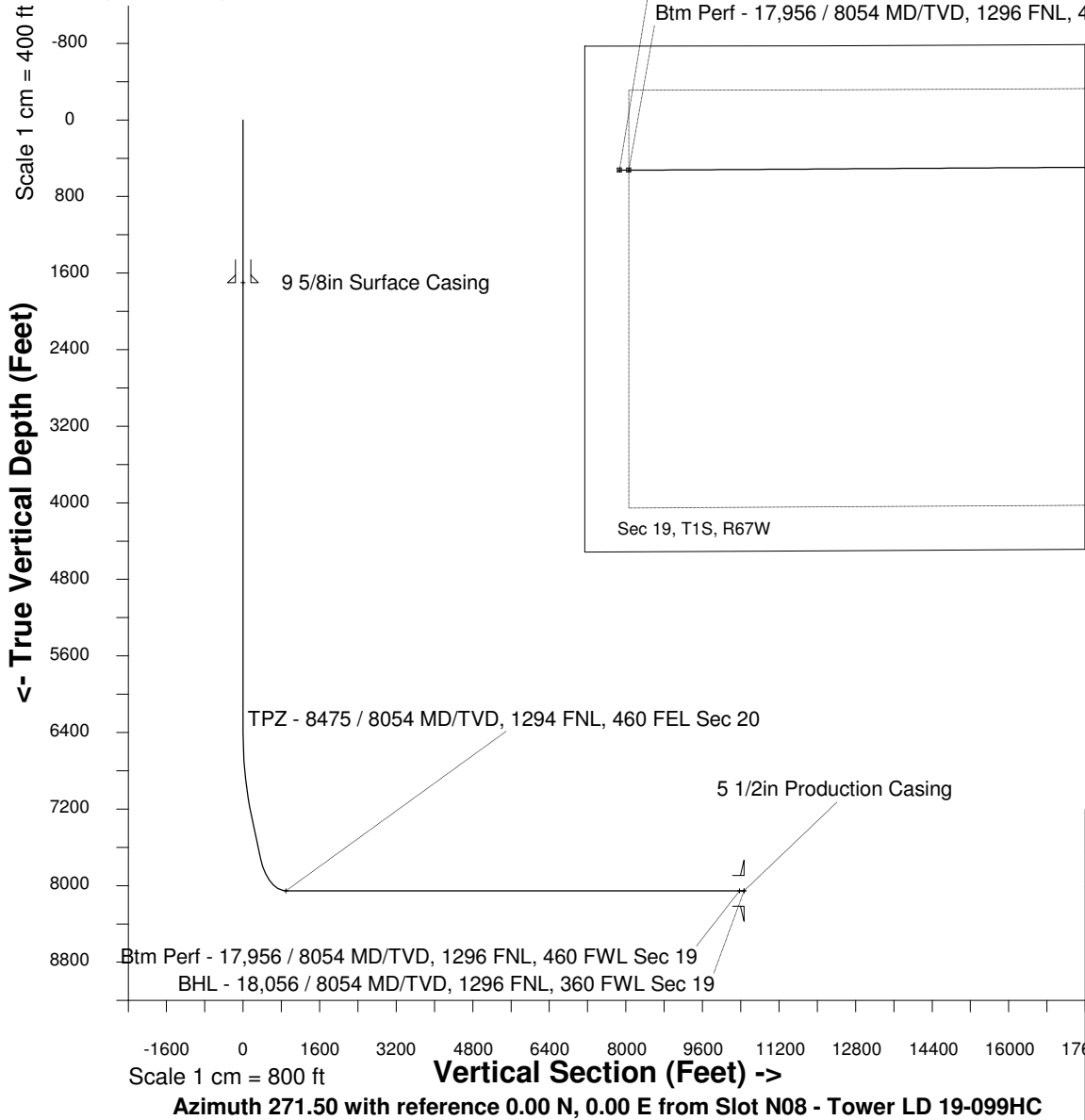
Scale 1 cm = 400 ft

East (Feet) ->

-13600 -12800 -12000 -11200 -10400 -9600 -8800 -8000 -7200 -6400 -5600 -4800 -4000 -3200 -2400 -1600 -800 0 800 1600



10-May-2017
IGRF Model [1900.0-2020.0] Dip: 66.48 deg Field: 52154.2 nT
Lat: N39 57 11.0916 Long: W104 54 7.2792 Elev: 5239.60 ft
Magnetic North is 8.26 deg East of TRUE North
To correct azimuth from Magnetic to TRUE add 8.26 deg



WELL PROFILE DATA

Point	MD	Inc	Azi	TVD	North	East	deg/100ft	V. Sect
Tie on	0.00	0.00	0.00	0.00	S 0.00	W 0.00		0.00
KOP	6400.00	0.00	304.07	6400.00	S 0.00	W 0.00	0.00	0.00
End of Build	7287.53	26.63	304.07	7255.93	N 113.48	W 167.76	9.84	170.68
End of Hold	7791.56	26.63	304.07	7706.51	N 240.03	W 354.87	0.00	361.04
Target TPZ - ...Sec 20	8474.65	90.00	269.63	8054.00	N 335.16	W 887.87	32.81	896.36
Target Btm Pe...Sec 19	17955.51	90.00	269.63	8054.00	N 274.65	W 10368.54	0.00	10372.18
End of Turn	17958.38	90.00	270.01	8054.00	N 274.64	W 10371.41	42.65	10375.05
T.D. & Target BHL... 19	18055.51	90.00	270.01	8054.00	N 274.65	W 10468.54	0.00	10472.14