

T1S, R67W, 6th P.M.

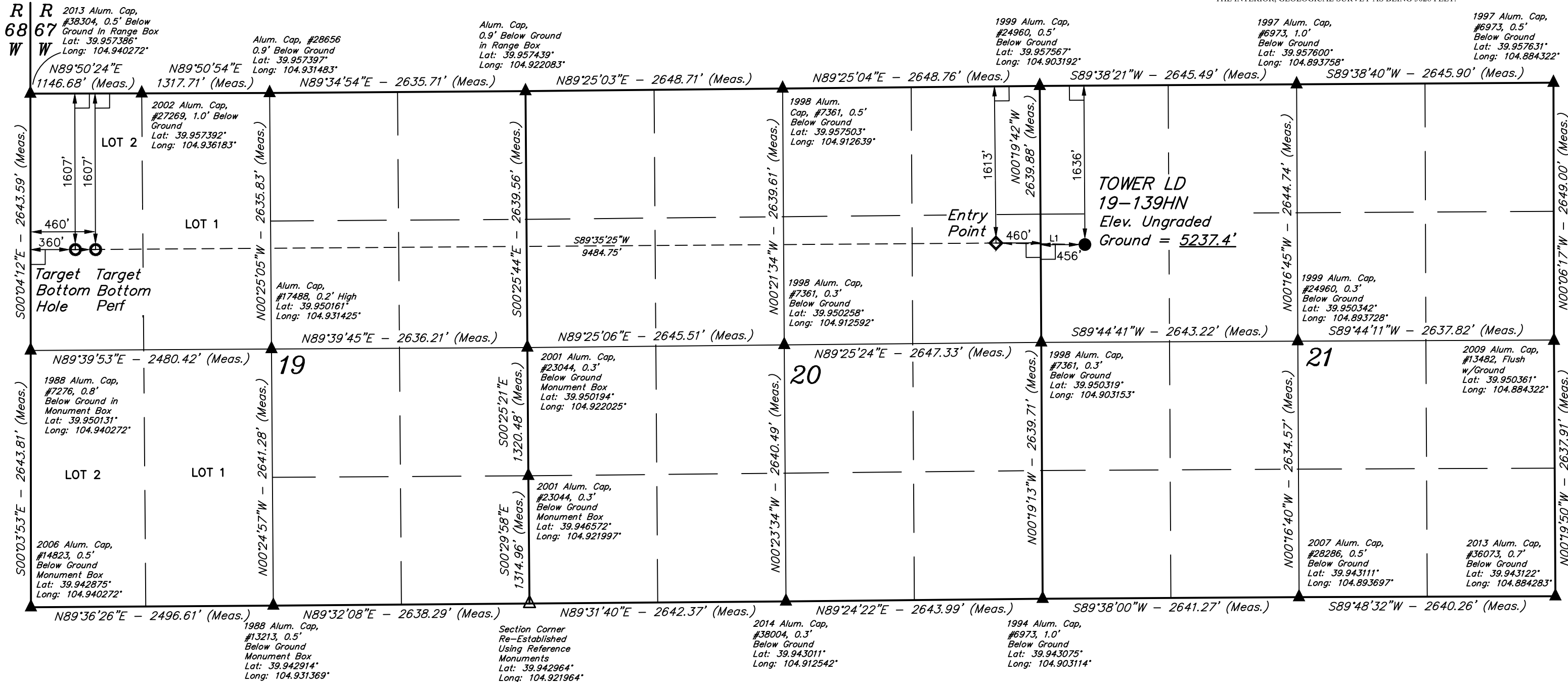
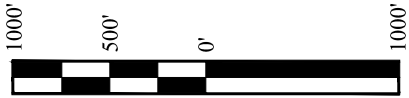
GREAT WESTERN OPERATING COMPANY

TOWER LD 19-139HN  
SW 1/4 NW 1/4, SECTION 21, T1S, R67W, 6th P.M.  
ADAMS COUNTY, COLORADO

BASIS OF BEARINGS  
BASIS OF ELEVATION

BENCHMARK JR 53 5026 LOCATED IN THE SW 1/4 SE 1/4 OF SECTION 18, T1N, R68W, 6th P.M., TAKEN FROM 1988 PUBLISHED DATUM BY THE UNITED STATES DEPARTMENT OF THE INTERIOR, GEOLOGICAL SURVEY AS BEING 5028 FEET.

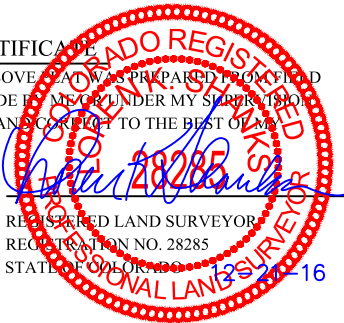
LINE TABLE		
LINE	DIRECTION	LENGTH
L1	N89°03'08"W	916.24'



LEGEND:

- = 90° SYMBOL
- = PROPOSED WELLHEAD.
- = TARGET BOTTOM HOLE - BOTTOM PERF
- ◆ = ENTRY POINT.
- ▲ = SECTION CORNERS LOCATED. (NAD 83)
- △ = SECTION CORNERS RE-ESTABLISHED. (Not Set on Ground.) (NAD 83)

THIS IS TO CERTIFY THAT THE ABOVE PLAT WAS PREPARED FROM FIELD NOTES OF ACTUAL SURVEYS MADE BY ME OR UNDER MY SUPERVISION, AND THAT THE SAME ARE TRUE AND CORRECT TO THE BEST OF MY KNOWLEDGE AND BELIEF.



PDOP = 1.2

NAD 83 (SURFACE LOCATION)	NAD 83 (ENTRY POINT)	NAD 83 (TARGET BOTTOM HOLE)
LATITUDE = 39°57'11.10" (39.953083)	LATITUDE = 39°57'11.26" (39.953128)	LATITUDE = 39°57' 11.7104" (39.953253)
LONGITUDE = 104°54'05.55" (104.901542)	LONGITUDE = 104°54'17.31" (104.904808)	LONGITUDE = 104°56' 20.3557" (104.938988)



UELS, LLC  
Corporate Office \* 85 South 200 East  
Vernal, UT 84078 \* (435) 789-1017

SURVEYED BY	GREG WEIMER, J.C.	11-22-16	SCALE
DRAWN BY	L.C.S.	11-28-16	1" = 1000'

WELL LOCATION PLAT