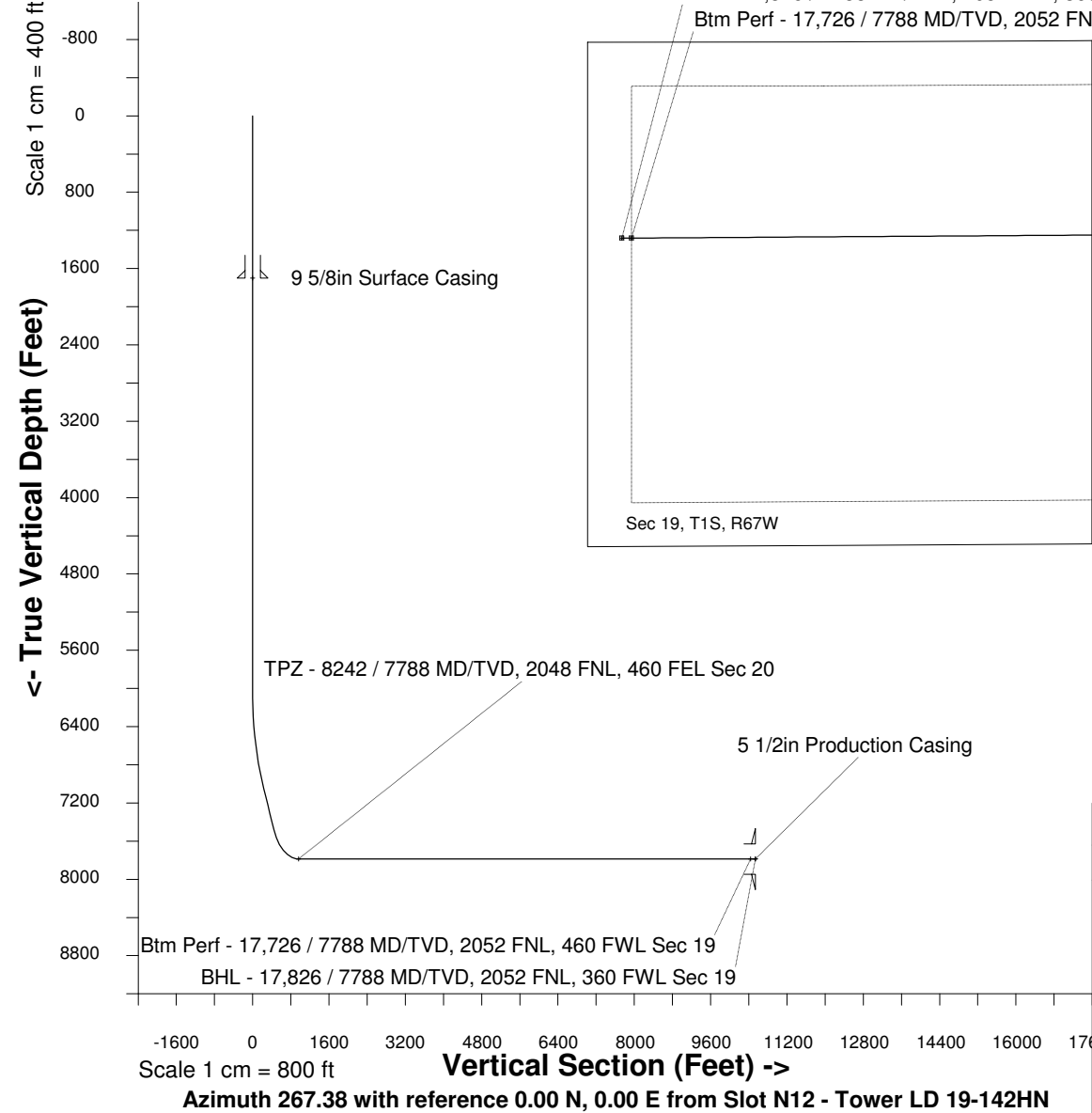
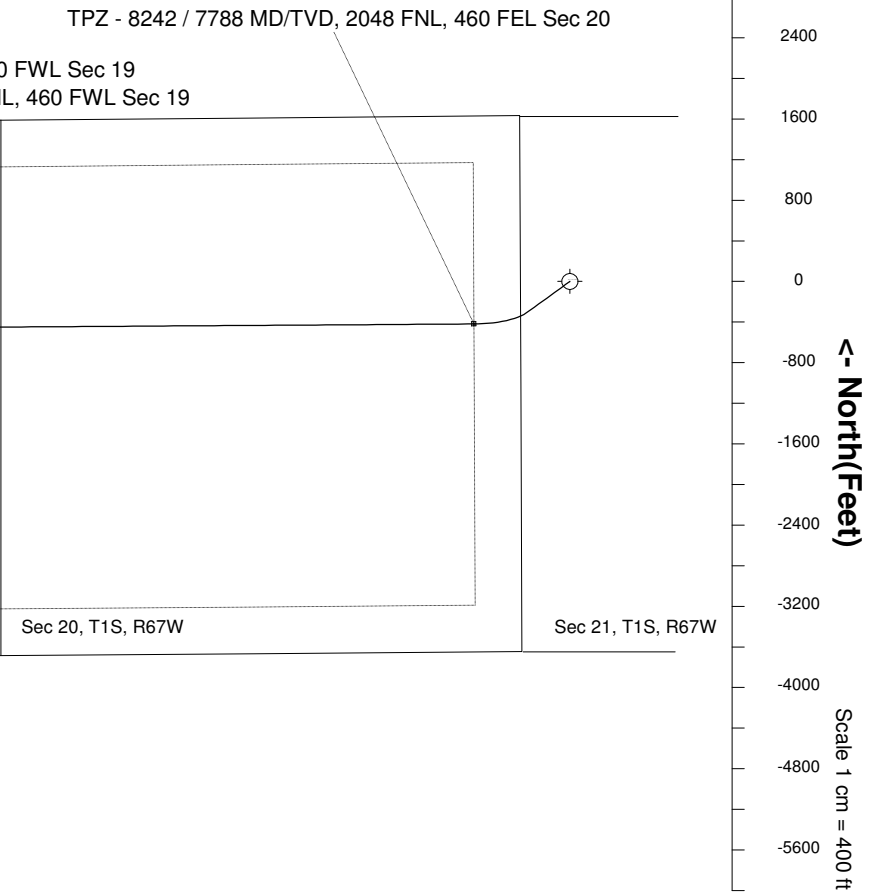


10-May-2017
IGRF Model [1900.0-2020.0] Dip: 66.48 deg Field: 52154.2 nT
Lat: N39 57 11.0916 Long: W104 54 7.2792 Elev: 5239.60 ft
Magnetic North is 8.26 deg East of TRUE North
To correct azimuth from Magnetic to TRUE add 8.26 deg



Great Western Operating Company, LLC			
Location	Colorado	Slot	Slot N12 - Tower LD 19-142HN
Field	Wattenburg	Well	Tower LD 19-142HN
Installation	Tower	Wellbore	Tower LD 19-142HN (PWB)

Created by	admin
Date plotted	15-May-2017
Plot reference is Tower LD 19-142HN (PWB).	
Ref wellpath is Tower LD 19-142HN (PWP#1).	
Coordinates are in Feet reference Slot N12 - Tower LD 19-142HN.	
True Vertical Depths are reference Rig Datum.	
Measured Depths are reference Rig Datum.	
Rig Datum: Planned Datum #1	
Rig Datum to Mean Sea Level: 5259.60 ft.	
Plot North is aligned to TRUE North.	



WELL PROFILE DATA								
Point	MD	Inc	Azi	TVD	North	East	deg/100ft	V. Sect
Tie on	0.00	0.00	0.00	0.00	S 0.00	W 0.00		-0.00
KOP	6050.00	0.00	233.97	6050.00	S 0.00	W 0.00	0.00	-0.00
End of Build	7049.99	30.00	233.97	7004.92	S 150.51	W 206.92	9.84	213.57
End of Hold	7581.91	30.00	233.97	7465.58	S 306.96	W 421.99	0.00	435.57
Target TPZ - ...Sec 20	8242.21	90.00	269.62	7788.00	S 418.91	W 944.81	32.81	962.95
Target Btm Pe...Sec 19	17726.46	90.00	269.62	7788.00	S 481.22	W 10428.86	0.00	10439.95
End of Turn	17729.39	90.00	270.00	7788.00	S 481.23	W 10431.78	42.65	10442.88
T.D. & Target BHL... 19	17826.46	90.00	270.00	7788.00	S 481.22	W 10528.86	0.00	10539.85