

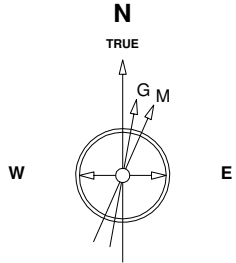
Great Western Operating Company, LLC

Location Colorado
Field Wattenburg
Installation Tower

Slot Slot N04 - Tower LD 19-022HC
Well Tower LD 19-022HC
Wellbore Tower LD 19-022HC (PWB)

Created by admin
Date plotted 15-May-2017

Plot reference is Tower LD 19-022HC (PWB).
Ref wellpath is Tower LD 19-022HC (PWP#1).
Coordinates are in Feet reference Slot N04 - Tower LD 19-022HC.
True Vertical Depths are reference Rig Datum.
Measured Depths are reference Rig Datum.
Rig Datum: Planned Datum #1
Rig Datum to Mean Sea Level: 5259.60 ft.
Plot North is aligned to TRUE North.



10-May-2017
IGRF Model [1900.0-2020.0] Dip: 66.48 deg Field: 52154.2 nT
Lat: N39 57 11.0916 Long: W104 54 7.2792 Elev: 5239.60 ft
Magnetic North is 8.26 deg East of TRUE North
To correct azimuth from Magnetic to TRUE add 8.26 deg

Scale 1 cm = 400 ft

East (Feet) ->

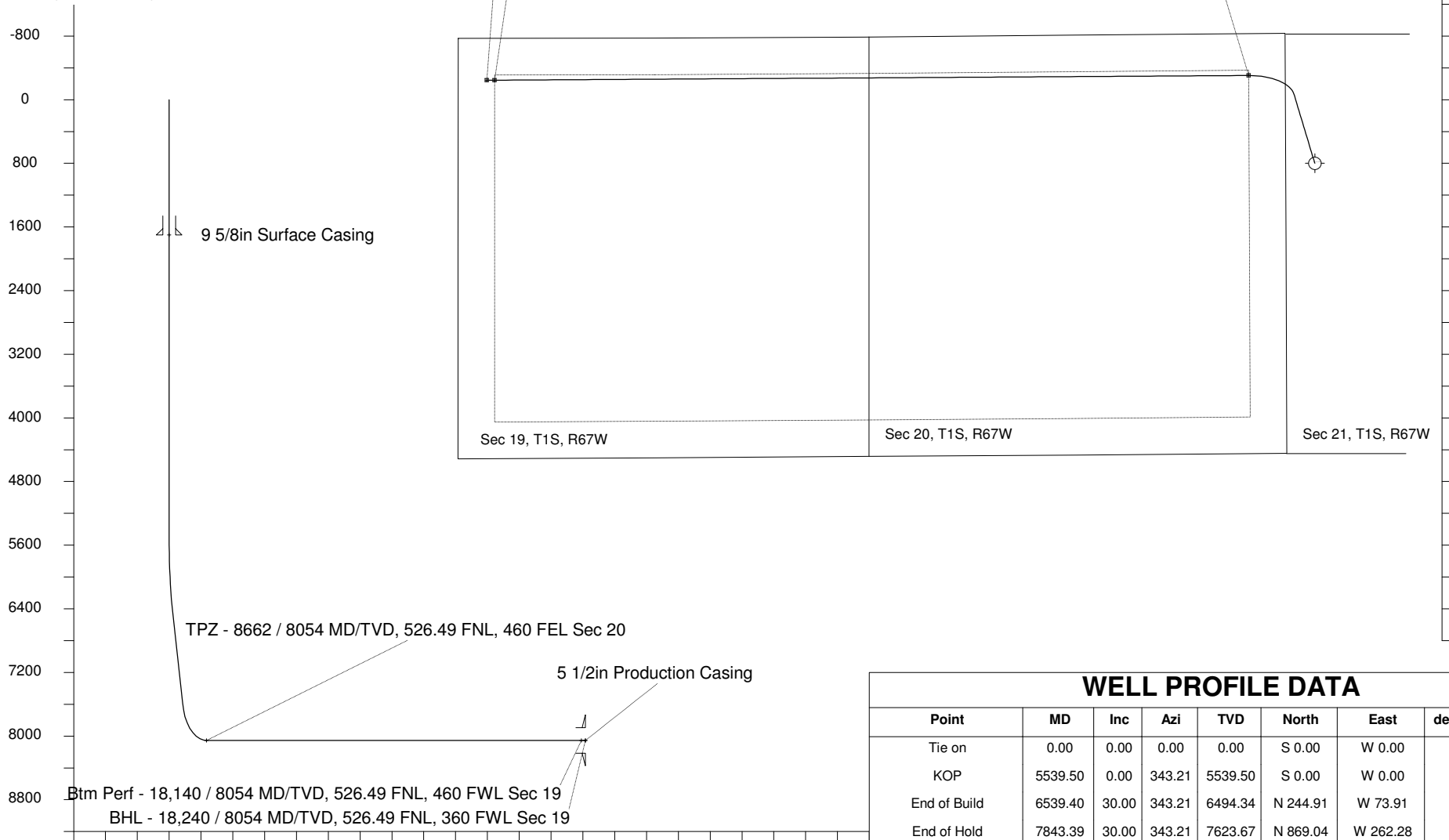
-13600 -12800 -12000 -11200 -10400 -9600 -8800 -8000 -7200 -6400 -5600 -4800 -4000 -3200 -2400 -1600 -800 0 800 1600

BHL - 18,240 / 8054 MD/TVD, 526.49 FNL, 360 FWL Sec 19 TPZ - 8662 / 8054 MD/TVD, 526.49 FNL, 460 FEL Sec 20

Btm Perf - 18,140 / 8054 MD/TVD, 526.49 FNL, 460 FWL Sec 19

<- True Vertical Depth (Feet)

Scale 1 cm = 400 ft



<- North(Feet)

Scale 1 cm = 400 ft

Scale 1 cm = 800 ft

Vertical Section (Feet) ->

Azimuth 275.73 with reference 0.00 N, 0.00 E from Slot N04 - Tower LD 19-022HC

WELL PROFILE DATA

Point	MD	Inc	Azi	TVD	North	East	deg/100ft	V. Sect
Tie on	0.00	0.00	0.00	0.00	S 0.00	W 0.00		0.00
KOP	5539.50	0.00	343.21	5539.50	S 0.00	W 0.00	0.00	0.00
End of Build	6539.40	30.00	343.21	6494.34	N 244.91	W 73.91	9.84	98.01
End of Hold	7843.39	30.00	343.21	7623.67	N 869.04	W 262.28	0.00	347.79
Target TPZ - ...Sec 20	8662.05	90.00	269.65	8054.00	N 1103.79	W 830.94	32.81	937.06
Target Btm Pe...Sec 19	18139.53	90.00	269.65	8054.00	N 1045.08	W 10308.23	0.00	10361.07
End of Turn	18142.29	90.00	270.00	8054.00	N 1045.07	W 10310.99	42.65	10363.81
T.D. & Target BHL... 19	18239.53	90.00	270.00	8054.00	N 1045.08	W 10408.23	0.00	10460.57