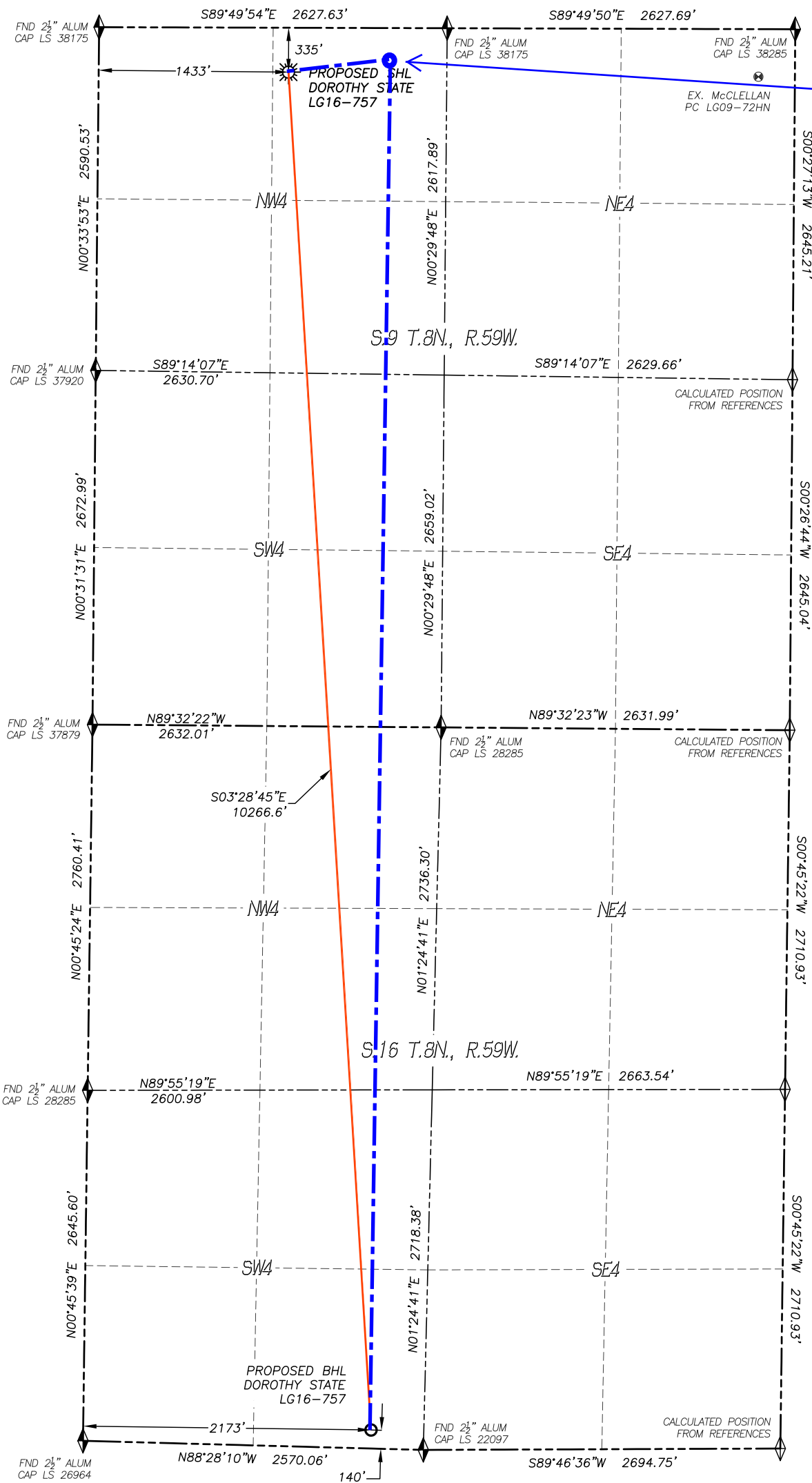


WELL LOCATION CERTIFICATE  
DOROTHY STATE LG16-757

SECTION: 9  
TOWNSHIP: 8N  
RANGE: 59W



Approximate Top of Producing Zone:  
200' FNL, 2165' FWL, Sec 9, T8N-R59W.  
**HAND DRAWN 3/7/2018**  
Depiction was not surveyed and was added by NBL

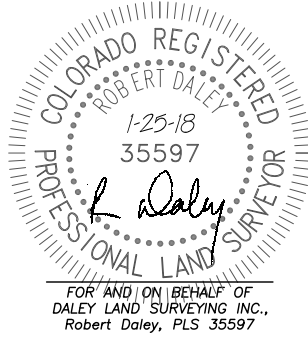
**APPROVED**

IN ACCORDANCE WITH A REQUEST FROM CODY BALL OF NOBLE ENERGY INC., DALEY LAND SURVEYING, INC. HAS DETERMINED THE SURFACE LOCATION OF THE DOROTHY STATE LG16-757 WELL TO BE 335' FNL, 1433' FWL, AS MEASURED AT NINETY (90) DEGREES FROM THE SECTION LINES OF SECTION 9, TOWNSHIP 8 NORTH, RANGE 59 WEST AND THE BOTTOM HOLE LOCATION TO BE 140' FSL, 2173' FWL, AS MEASURED AT NINETY (90) DEGREES FROM THE SECTION LINES OF SECTION 16, TOWNSHIP 8 NORTH, RANGE 59 WEST, OF THE 6TH PRINCIPAL MERIDIAN, WELD COUNTY, COLORADO.

I HEREBY STATE THAT THIS WELL LOCATION CERTIFICATE WAS PREPARED BY ME OR UNDER MY DIRECT SUPERVISION, THAT THE WORK WAS COMPLETED ON 6/23/2017 FOR AND ON BEHALF OF NOBLE ENERGY, INC., AND THAT THIS MAP DOES NOT REPRESENT A BOUNDARY SURVEY, IT IS NOT A LAND SURVEY PLAT OR AN IMPROVEMENT SURVEY PLAT AND IT IS NOT TO BE RELIED UPON FOR THE ESTABLISHMENT OF FENCE, BUILDING OR OTHER FUTURE IMPROVEMENT LINES.

**NOTES:**

- 1) BEARINGS FOR THIS MAP ARE ASSUMED AND BASED UPON GPS OBSERVATIONS MADE BETWEEN MONUMENTS LOCATED AT THE NORTHWEST CORNER AND NORTH QUARTER CORNER OF SECTION 9, T.8N., R.59W.
- 2) HORIZONTAL DATUM IS NAD83.
- 3) VERTICAL DATUM IS NAVD88 AND ORIGINATES FROM THE LOCAL C.O.R.S. NETWORK, UTILIZING THE GEOID12A MODEL.
- 4) SEE LOCATION DRAWING FOR VISIBLE IMPROVEMENTS WITHIN 500' OF PROPOSED DISTURBED AREA.
- 5) SURFACE USE: RANGELAND.
- 6) INST. OPERATOR: SCOTT ESTABROOKS.
- 7) NEAREST WELL: 3548± E - McCLELLAN PC LG09-72HN



**NAD 83 LATITUDE AND LONGITUDE**

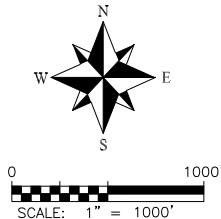
**SURFACE LOCATION:**

LATITUDE: N40.68320°  
LONGITUDE: W103.98565°  
ELEV: 4855'  
PDOP: 1.6  
QTR/QTR: NE4/NW4

**BOTTOM HOLE:**

LATITUDE: N40.65508°  
LONGITUDE: W103.98339°

- LEGEND**
- FOUND MONUMENT AS DESCRIBED
  - PROPOSED WELL
  - EXISTING WELL
  - BOTTOM HOLE
  - ABANDONED WELL
  - CALCULATED POSITION



**noble energy**

**DALEY LAND SURVEYING, INC.**  
970.302.4159