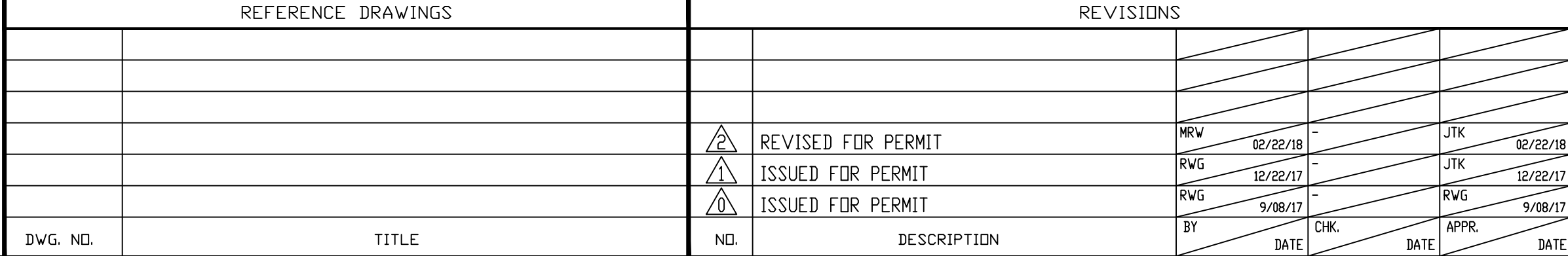




<div>NOTES:</div> <div>1. EQUIPMENT PLACEMENT IS APPROXIMATE AND SUBJECT TO MINOR MODIFICATION DUE TO SPECIFIC CIRCUMSTANCES.</div>	<div>DATA SOURCES:</div> <div>- AERIAL COURTESY OF ESRI, INC.</div>	<div><div><div><div><div></div><div>609</div></div></div><div>CONSULTING, LLC</div></div><div><div>LOVELAND OFFICE</div><div>1635 Foxtrail Drive, Suite 204</div><div>Loveland, Colorado 80538</div><div>Phone 970-776-4331</div></div><div><div>SHERIDAN OFFICE</div><div>1095 Saberton Avenue</div><div>Sheridan, Wyoming 82801</div><div>Phone 307-674-0609</div></div></div>	<div><div><div>Anadarko</div><div>Petroleum Corporation</div><div>1099 18th Street</div><div>Denver, CO 80202</div></div></div>	<div><div>SCALE:</div><div>DATE SURVEYED:</div><div>DATE:</div><div>DRAFTER:</div><div>REVISED:</div></div> <div><div>1" = 200'</div><div>1/30/18</div><div>3/1/18</div><div>DD</div><div></div></div>	<div><div>FACILITY LAYOUT AERIAL</div><div>PETTINGER 20-18HZ</div><div>LOCATED IN SECTION 18, T1N, R65W, 6TH P.M.</div><div>WELD COUNTY, COLORADO</div></div>
---	---	--	---	--	---

NOTES:

1. AGP CONSTRUCTION



DRAWN BY: JC	CREATION DATE: 08/31/17	-
APPROVED: JTK	APPR. DATE: 08/31/17	
	DWG. No.:	SHEET No.
SCALE: NONE	X22188-STOR-01-PP-2020 REV 2	- OF - 2