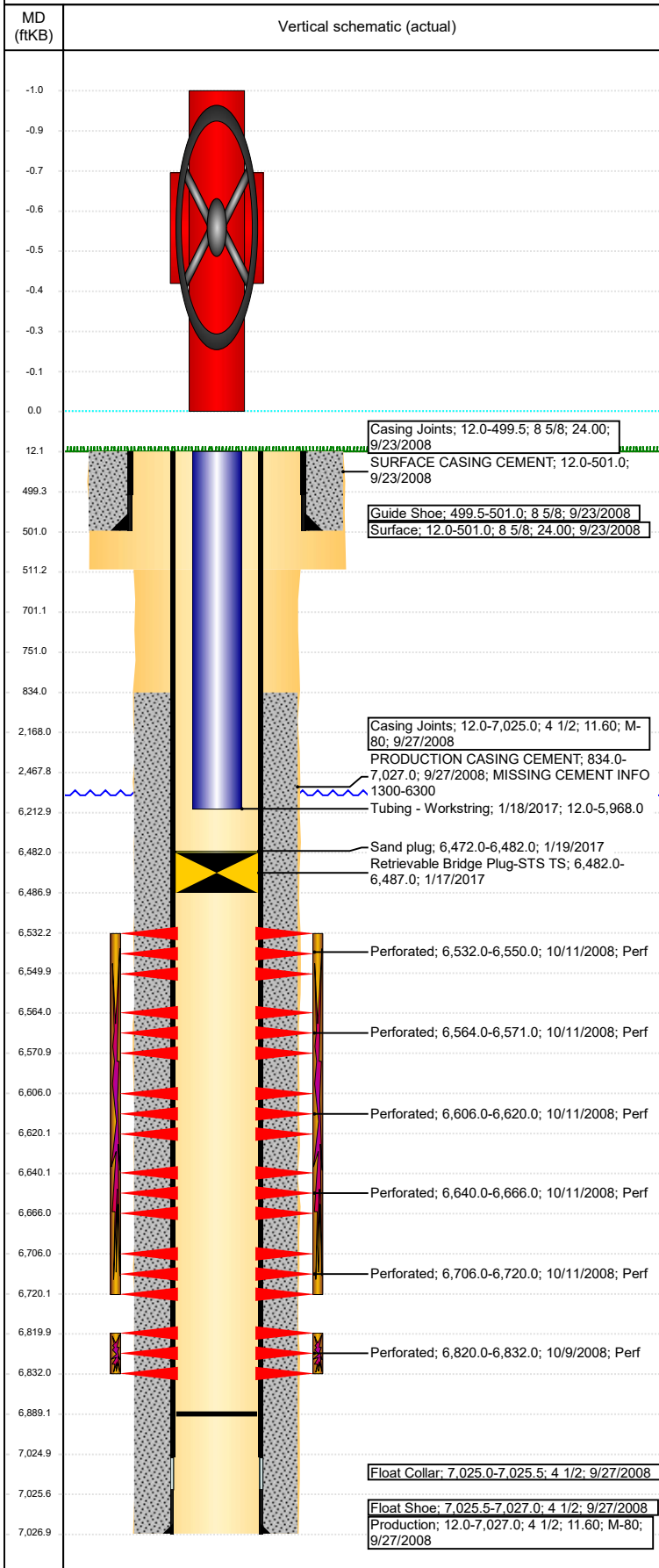


Well Name: COOPER 23-01-17

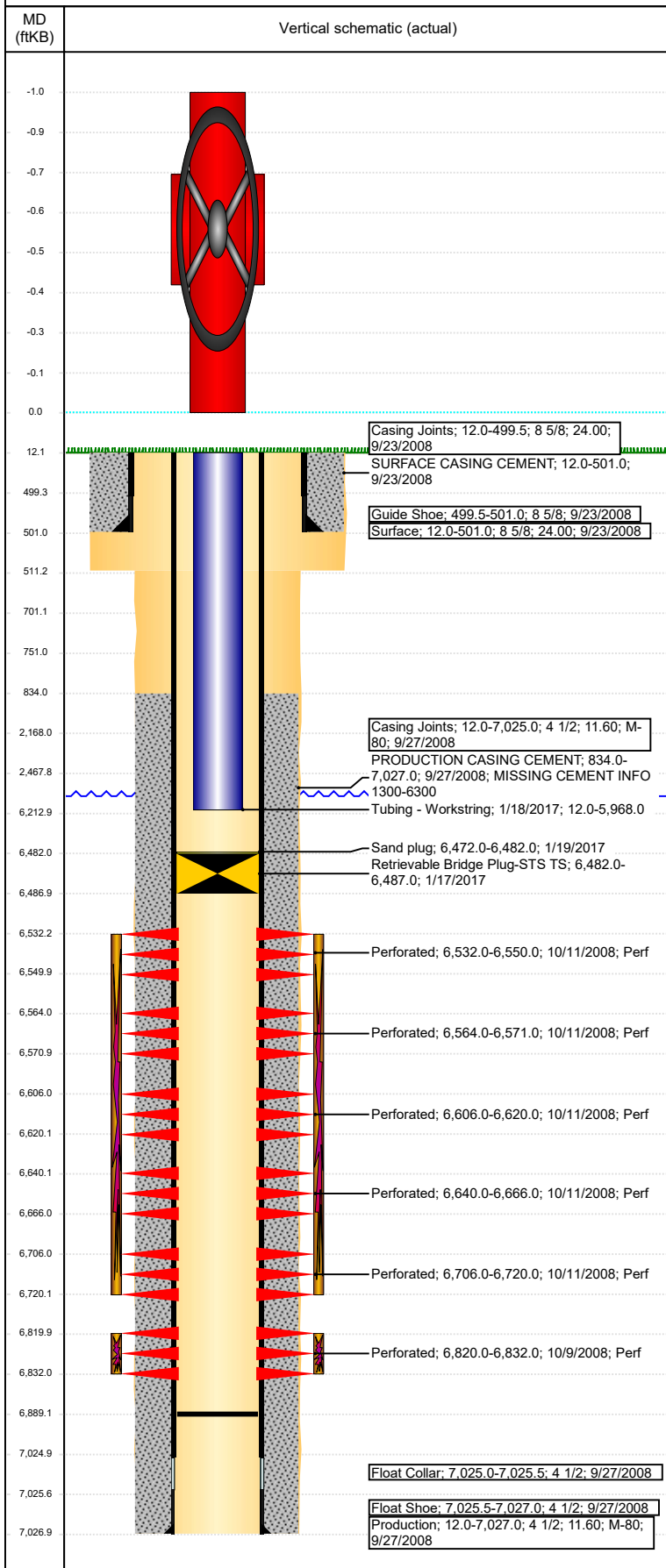
VERTICAL - ORIGINAL HOLE, 5/21/2018 1:31:38 PM



Well Header							
API 05-123-29011		Well Report Center 425683027			Well Configuration Type VERTICAL		
Original KB Elevation (ft) 4,662		KB - GL / MSL (ftKB) 12.00		Spud Date 9/22/2008		P & A Date	
Production Route Watt - B3-06			Well Production Status TA			SoRT Ignore Yes	
Directions To Well 59/392 W .2 S & W INTO				Actual Latitude (°) 40.47813000		Actual Longitude (°) -104.51264000	
Comment DISCREPANCY: DR RPT TD 6998; PROD CSG @ 7027; USED PROD CSG DEPTH							
Congressional Location							
Quarter 3 NW	Quarter 4 NE	Section 23	Township 6	Twntshp N/S Dir N	Range 64	Range E/W Dir W	
Rig Operator							
Rig Operator							
Plug Back Total Depths							
Date	Depth (ftKB)	Method			Com		
1/18/2017	6,889.0	TAG			NO C/O(57' OF RATHOLE)		
Wellbore Sections							
Section Des		Size (in)		Act Top, MD (ftKB)		Act Btm, MD (ftKB)	
SURFACE		12 1/4		12		511	
PRODUCTION		7 7/8		511		7,027	
Zone Statuses							
Zone Name		Status Date			Status		
CODELL		1/19/2017			TA		
NIOBRARA		1/19/2017			TA		
Casing Strings							
Surface, 501.0ftKB							
Casing Description Surface	Run Date 9/23/2008	OD (in) 8 5/8	Wt/Len (l... 24.00	Grade	Top, MD (ft... 12.0	MD (ftKB) 501.0	
Production, 7,027.0ftKB							
Casing Description Production	Run Date 9/27/2008	OD (in) 4 1/2	Wt/Len (l... 11.60	Grade M-80	Top, MD (ft... 12.0	MD (ftKB) 7,027.0	
Cement							
Des		Start Date		Top (ftKB)		Btm (ftKB)	
SURFACE CASING CEMENT		9/23/2008		12.0		501.0	
PRODUCTION CASING CEMENT		9/27/2008		834.0		7,027.0	
Proposed Cement							
Des				Top (ftKB)		Btm (ftKB)	
Balance Plug				6,213.0		6,482.0	
Balance Plug				2,168.0		2,468.0	
Shoe Plug				12.0		701.0	
Shoe Plug				701.0		751.0	
Tubing Strings							
Tubing Description Tubing - Workstring	Run Date 1/18/2017	String... 2 3/8	ID (in) 1.87	Wt (lb/ft)	Grade	Len (ft) 5,956.00	Set De...
Tubing Components							
Item Des	OD (in)	Wt (lb/ft)	Grade	Jts	Len (ft)	Btm (ftKB)	Btm (TVD) (ftKB)
Tubing	2 3/8			190	5,952.00	5,964.0	
Seal Nipple	2 3/8			1	1.00	5,965.0	
On-Off Tool	2 3/8			1	3.00	5,968.0	
Other In Hole							
Run Date	Des			OD (in)	Top (ftKB)	Btm (ftKB)	
1/17/2017	Retrievable Bridge Plug-STS TS			4	6,482.0	6,487.0	
Proposed Other In Hole							
Des			OD (in)		Top (ftKB)	Btm (ftKB)	
Logs							
Date	Type				Top, MD (ftKB)		Btm, MD (ftKB)
9/27/2008	COMPENSATED DENSITY				3,500.0		7,023.0
9/27/2008	INDUCTION				501.0		7,043.0
10/8/2008	CBL/CCL/GR				700.0		6,290.0
3/30/2015	GYRO				12.0		6,700.0

Well Name: COOPER 23-01-17

VERTICAL - ORIGINAL HOLE, 5/21/2018 1:31:39 PM



Perforation Data				
Linked Zone	Sum of Entered Shot Total	Top (ftKB)	Btm (ftKB)	Date
NIOBRARA, ORIGINAL HOLE	26	6,532.00	6,550.00	10/11/2008
NIOBRARA, ORIGINAL HOLE	14	6,564.00	6,571.00	10/11/2008
NIOBRARA, ORIGINAL HOLE	56	6,606.00	6,620.00	10/11/2008
NIOBRARA, ORIGINAL HOLE	104	6,640.00	6,666.00	10/11/2008
NIOBRARA, ORIGINAL HOLE	56	6,706.00	6,720.00	10/11/2008
CODELL, ORIGINAL HOLE	48	6,820.00	6,832.00	10/9/2008
Total (Sum)	304			

Job Supply Amounts						
Supply Item Des	Type	Uni...	Job Category	Total...	Total...	Total...