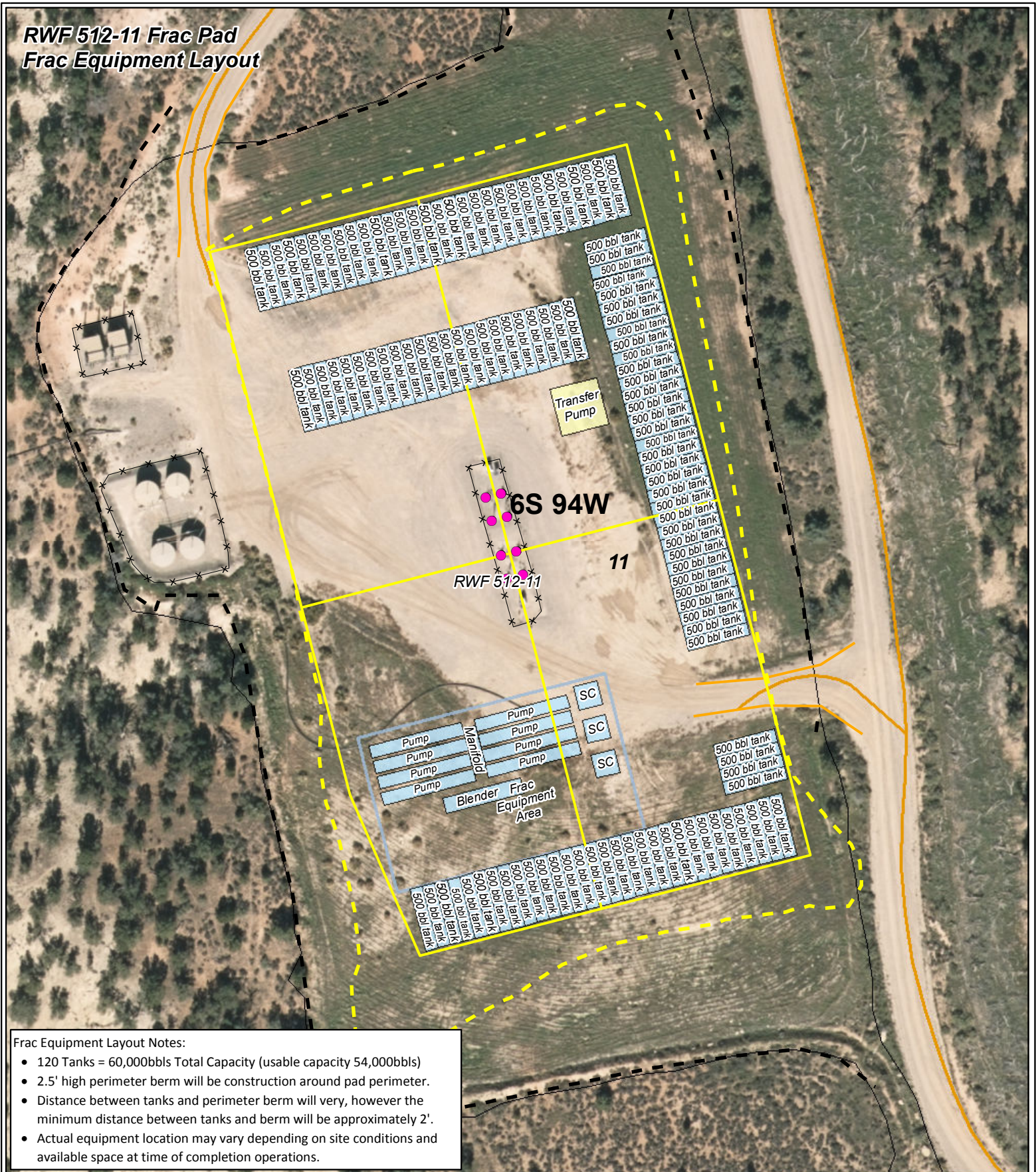


RWF 512-11 Frac Pad Frac Equipment Layout

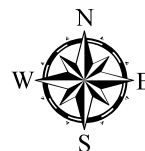


Frac Equipment Layout Notes:

- 120 Tanks = 60,000bbls Total Capacity (usable capacity 54,000bbls)
- 2.5' high perimeter berm will be construction around pad perimeter.
- Distance between tanks and perimeter berm will vary, however the minimum distance between tanks and berm will be approximately 2'.
- Actual equipment location may vary depending on site conditions and available space at time of completion operations.

Legend

- | | |
|---------------------------------|-----------------------|
| ● Production Gas Well | ■ Frac Equipment |
| — Proposed Daylight Line | ■ Frac Equipment Area |
| — Proposed Pad or Pit | ■ Transfer Pump |
| — Existing Road | — Existing Pad |
| — Existing Well | — Existing Road |
| — Proposed Limit of Disturbance | |
| ✕ Existing Fence | |



0 40 80 160 Feet

