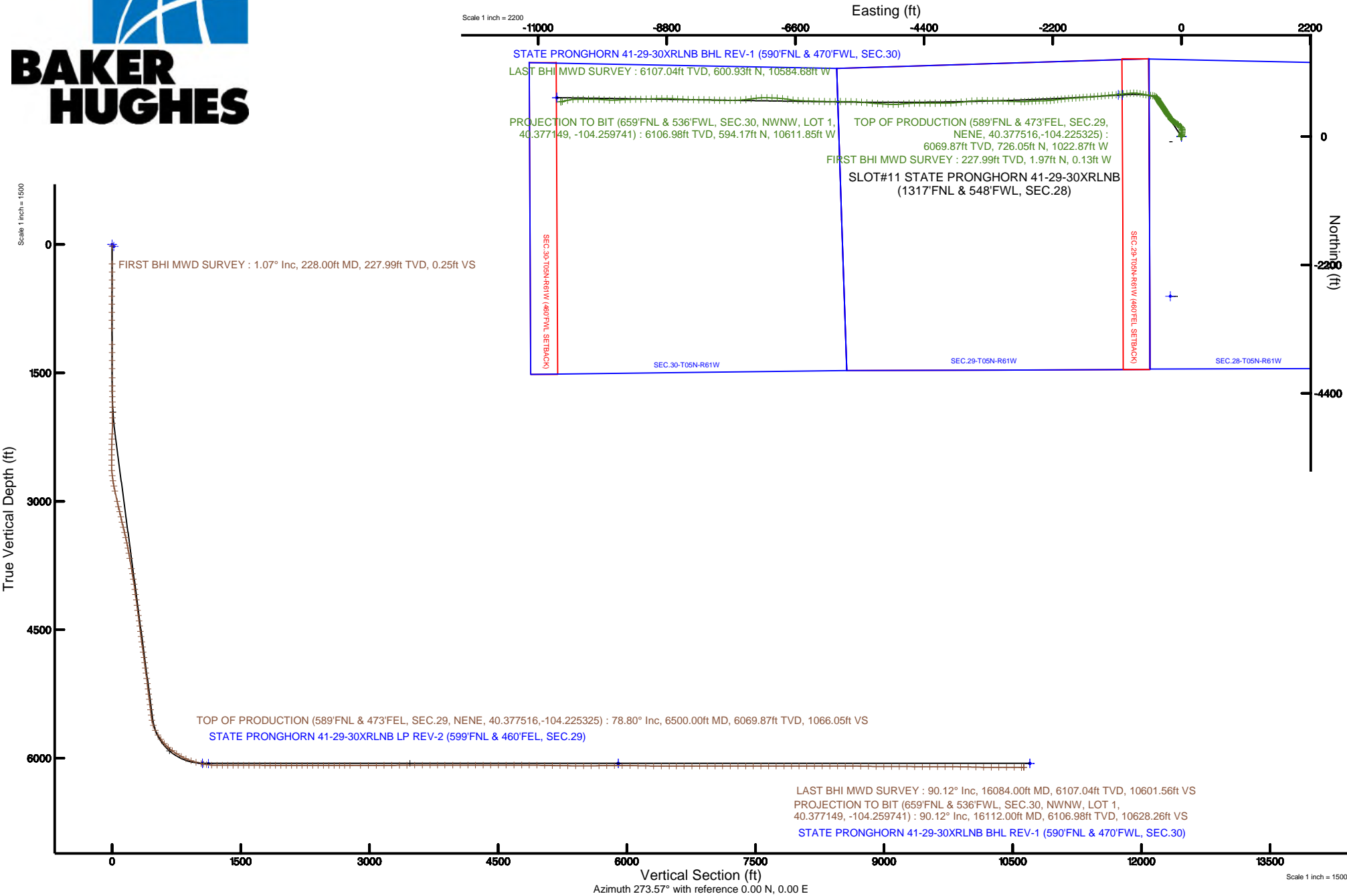


# BONANZA CREEK OIL COMPANY

Location: COLORADO Slot: SLOT#11 STATE PRONGHORN 41-29-30XRLNB (1317'FNL & 548'FWL, SEC.28)  
Field: WELD COUNTY Well: STATE PRONGHORN 41-29-30XRLNB  
Facility: SEC.28-T05N-R61W Wellbore: STATE PRONGHORN 41-29-30XRLNB PWB



Plot reference wellpath is STATE PRONGHORN 41-29-30XRLNB PWB (REV-B.0)	Grid System: NAD83 / Lambert Colorado SP, Northern Zone (501), US feet
True vertical depths are referenced to RIG (17KB) (RKB)	* = Wellpath was transformed from a different geodetic datum
Measured depths are referenced to RIG (17KB) (RKB)	North Reference: True north
RIG (17KB) (RKB) to Mean Sea Level: 4635 feet	Scale: True distance
Mean Sea Level to Mud line (At Slot: SLOT#11 STATE PRONGHORN 41-29-30XRLNB (1317'FNL & 548'FWL, SEC.28)): 0 feet	Depths are in feet
Coordinates are in feet referenced to Slot	Created by: ingnjmr on 2018-05-03
	Database: Denver





# Actual Wellpath Report

## STATE PRONGHORN 41-29-30XRLNB AWP

Page 1 of 11



### REFERENCE WELLPATH IDENTIFICATION

Operator	BONANZA CREEK OIL COMPANY	Slot	SLOT#11 STATE PRONGHORN 41-29-30XRLNB (1317'FNL & 548'FWL, SEC.28)
Area	COLORADO	Well	STATE PRONGHORN 41-29-30XRLNB
Field	WELD COUNTY	Wellbore	STATE PRONGHORN 41-29-30XRLNB AWB
Facility	SEC.28-T05N-R61W		

### REPORT SETUP INFORMATION

Projection System	NAD83 / Lambert Colorado SP, Northern Zone (501), US feet	Software System	WellArchitect® 5.0
North Reference	True	User	Ingmjmr
Scale	0.999959	Report Generated	5/3/2018 at 12:59:21 PM
Convergence at slot	0.83° East	Database/Source file	Denver/STATE_PRONGHORN_41-29-30XRLNB_AWP.xml

### WELLPATH LOCATION

	Local coordinates		Grid coordinates		Geographic coordinates	
	North[ft]	East[ft]	Easting[US ft]	Northing[US ft]	Latitude	Longitude
Slot Location	88.53	157.98	3356149.09	1382210.71	40°22'31.883"N	104°13'17.951"W
Facility Reference Pt			3355992.41	1382119.92	40°22'31.008"N	104°13'19.992"W
Field Reference Pt			3224525.77	1254425.87	40°01'44.400"N	104°41'53.556"W

### WELLPATH DATUM

Calculation method	Minimum curvature	RIG (17'KB) (RKB) to Facility Vertical Datum	4635.00ft
Horizontal Reference Pt	Slot	RIG (17'KB) (RKB) to Mean Sea Level	4635.00ft
Vertical Reference Pt	RIG (17'KB) (RKB)	RIG (17'KB) (RKB) to Mud Line at Slot (SLOT#11 STATE PRONGHORN 41-29-30XRLNB (1317'FNL & 548'FWL, SEC.28))	4635.00ft
MD Reference Pt	RIG (17'KB) (RKB)	Section Origin	N 0.00, E 0.00 ft
Field Vertical Reference	Mean Sea Level	Section Azimuth	273.57°



# Actual Wellpath Report

STATE PRONGHORN 41-29-30XRLNB AWP

Page 2 of 11



REFERENCE WELLPATH IDENTIFICATION			
Operator	BONANZA CREEK OIL COMPANY	Slot	SLOT#11 STATE PRONGHORN 41-29-30XRLNB (1317'FNL & 548'FWL, SEC.28)
Area	COLORADO	Well	STATE PRONGHORN 41-29-30XRLNB
Field	WELD COUNTY	Wellbore	STATE PRONGHORN 41-29-30XRLNB AWP
Facility	SEC.28-T05N-R61W		

WELLPATH DATA (208 stations) † = interpolated/extrapolated station										
MD [ft]	Inclination [°]	Azimuth [°]	TVD [ft]	Vert Sect [ft]	North [ft]	East [ft]	Latitude	Longitude	DLS [°/100ft]	Comments
0.00†	0.000	356.260	0.00	0.00	0.00	0.00	40°22'31.883°N	104°13'17.951°W	0.00	
17.00	0.000	356.260	17.00	0.00	0.00	0.00	40°22'31.883°N	104°13'17.951°W	0.00	
228.00	1.070	356.260	227.99	0.25	1.97	-0.13	40°22'31.902°N	104°13'17.952°W	0.51	FIRST BHI MWD SURVEY
322.00	0.750	22.900	321.98	0.16	3.41	0.05	40°22'31.916°N	104°13'17.950°W	0.56	
416.00	0.390	67.210	415.97	-0.33	4.10	0.59	40°22'31.923°N	104°13'17.943°W	0.58	
510.00	0.660	83.300	509.97	-1.15	4.29	1.42	40°22'31.925°N	104°13'17.932°W	0.32	
604.00	0.530	91.230	603.96	-2.12	4.34	2.39	40°22'31.926°N	104°13'17.920°W	0.16	
698.00	0.460	170.040	697.96	-2.64	3.96	2.89	40°22'31.922°N	104°13'17.913°W	0.67	
792.00	0.500	200.280	791.96	-2.61	3.20	2.82	40°22'31.914°N	104°13'17.914°W	0.27	
886.00	0.580	194.110	885.95	-2.41	2.36	2.56	40°22'31.906°N	104°13'17.918°W	0.11	
980.00	0.730	218.650	979.95	-1.98	1.43	2.07	40°22'31.897°N	104°13'17.924°W	0.33	
1168.00	0.680	195.020	1167.93	-1.07	-0.59	1.03	40°22'31.877°N	104°13'17.937°W	0.16	
1262.00	0.620	195.780	1261.93	-0.85	-1.61	0.75	40°22'31.867°N	104°13'17.941°W	0.06	
1356.00	0.560	202.840	1355.92	-0.59	-2.53	0.43	40°22'31.858°N	104°13'17.945°W	0.10	
1450.00	0.440	278.880	1449.92	-0.08	-2.89	-0.10	40°22'31.854°N	104°13'17.952°W	0.66	
1558.00	0.610	323.090	1557.92	0.71	-2.37	-0.86	40°22'31.859°N	104°13'17.962°W	0.39	
1652.00	0.720	355.970	1651.91	1.11	-1.38	-1.20	40°22'31.869°N	104°13'17.966°W	0.42	
1715.00	0.960	336.800	1714.90	1.40	-0.50	-1.44	40°22'31.878°N	104°13'17.969°W	0.58	
1777.00	1.210	276.210	1776.89	2.29	0.05	-2.29	40°22'31.883°N	104°13'17.980°W	1.80	
1840.00	1.780	239.450	1839.87	3.76	-0.38	-3.80	40°22'31.879°N	104°13'18.000°W	1.73	
1901.00	2.210	219.960	1900.84	5.25	-1.76	-5.37	40°22'31.865°N	104°13'18.020°W	1.31	
1964.00	1.150	160.520	1963.81	5.72	-3.29	-5.94	40°22'31.850°N	104°13'18.028°W	3.02	
2026.00	2.020	20.750	2025.80	5.15	-2.85	-5.34	40°22'31.855°N	104°13'18.020°W	4.83	
2089.00	4.980	9.020	2088.68	4.57	0.89	-4.52	40°22'31.892°N	104°13'18.009°W	4.81	
2214.00	10.250	20.430	2212.54	0.82	16.68	0.22	40°22'32.048°N	104°13'17.948°W	4.37	
2276.00	13.430	14.270	2273.21	-2.12	28.83	3.92	40°22'32.168°N	104°13'17.900°W	5.51	
2340.00	13.830	5.430	2335.42	-3.75	43.65	6.47	40°22'32.314°N	104°13'17.867°W	3.31	
2403.00	14.140	5.110	2396.55	-4.20	58.81	7.87	40°22'32.464°N	104°13'17.849°W	0.51	
2466.00	14.500	4.800	2457.59	-4.58	74.33	9.22	40°22'32.617°N	104°13'17.832°W	0.58	
2529.00	14.890	4.500	2518.53	-4.88	90.26	10.51	40°22'32.775°N	104°13'17.815°W	0.63	



# Actual Wellpath Report

STATE PRONGHORN 41-29-30XRLNB AWP

Page 3 of 11



REFERENCE WELLPATH IDENTIFICATION			
Operator	BONANZA CREEK OIL COMPANY	Slot	SLOT#11 STATE PRONGHORN 41-29-30XRLNB (1317'FNL & 548'FWL, SEC.28)
Area	COLORADO	Well	STATE PRONGHORN 41-29-30XRLNB
Field	WELD COUNTY	Wellbore	STATE PRONGHORN 41-29-30XRLNB AWP
Facility	SEC.28-T05N-R61W		

WELLPATH DATA (208 stations)										
MD [ft]	Inclination [°]	Azimuth [°]	TVD [ft]	Vert Sect [ft]	North [ft]	East [ft]	Latitude	Longitude	DLS [°/100ft]	Comments
2592.00	15.090	4.380	2579.39	-5.13	106.51	11.77	40°22'32.935"N	104°13'17.799"W	0.32	
2655.00	14.020	352.510	2640.38	-3.78	122.26	11.41	40°22'33.091"N	104°13'17.803"W	5.02	
2717.00	14.400	336.340	2700.51	1.19	136.77	7.33	40°22'33.234"N	104°13'17.856"W	6.41	
2779.00	15.020	323.220	2760.49	9.92	150.27	-0.58	40°22'33.368"N	104°13'17.958"W	5.45	
2841.00	15.180	318.740	2820.35	20.84	162.81	-10.74	40°22'33.492"N	104°13'18.090"W	1.90	
2904.00	15.860	315.680	2881.05	33.05	175.17	-22.19	40°22'33.614"N	104°13'18.238"W	1.69	
3029.00	14.950	305.370	3001.59	59.42	196.72	-47.28	40°22'33.827"N	104°13'18.562"W	2.31	
3092.00	14.940	303.740	3062.45	73.35	205.94	-60.66	40°22'33.918"N	104°13'18.735"W	0.67	
3154.00	15.180	303.730	3122.32	87.28	214.88	-74.06	40°22'34.006"N	104°13'18.908"W	0.39	
3216.00	15.280	303.280	3182.15	101.39	223.87	-87.64	40°22'34.095"N	104°13'19.083"W	0.25	
3279.00	15.010	301.630	3242.96	115.80	232.71	-101.52	40°22'34.182"N	104°13'19.263"W	0.81	
3342.00	15.130	300.110	3303.79	130.35	241.11	-115.58	40°22'34.265"N	104°13'19.444"W	0.66	
3405.00	15.170	303.700	3364.60	144.84	249.81	-129.55	40°22'34.351"N	104°13'19.625"W	1.49	
3467.00	15.220	308.710	3424.44	158.51	259.40	-142.65	40°22'34.446"N	104°13'19.794"W	2.12	
3530.00	15.200	313.720	3485.24	171.59	270.28	-155.08	40°22'34.554"N	104°13'19.954"W	2.09	
3592.00	15.170	317.860	3545.07	183.60	281.91	-166.39	40°22'34.669"N	104°13'20.101"W	1.75	
3655.00	15.080	321.750	3605.89	194.97	294.46	-177.00	40°22'34.793"N	104°13'20.238"W	1.62	
3718.00	15.130	325.720	3666.72	205.48	307.69	-186.70	40°22'34.923"N	104°13'20.363"W	1.64	
3843.00	15.050	323.730	3787.41	225.88	334.26	-205.49	40°22'35.186"N	104°13'20.606"W	0.42	
3905.00	14.990	324.090	3847.29	236.14	347.24	-214.96	40°22'35.314"N	104°13'20.728"W	0.18	
3968.00	14.940	324.920	3908.15	246.39	360.49	-224.40	40°22'35.445"N	104°13'20.850"W	0.35	
4030.00	13.050	326.090	3968.31	255.64	372.84	-232.90	40°22'35.567"N	104°13'20.960"W	3.08	
4093.00	13.080	326.230	4029.68	264.29	384.66	-240.83	40°22'35.684"N	104°13'21.063"W	0.07	
4155.00	12.900	327.170	4090.09	272.65	396.31	-248.48	40°22'35.799"N	104°13'21.161"W	0.45	
4218.00	13.010	327.520	4151.49	281.00	408.20	-256.10	40°22'35.917"N	104°13'21.260"W	0.21	
4281.00	12.450	325.580	4212.94	289.35	419.79	-263.75	40°22'36.031"N	104°13'21.359"W	1.12	
4343.00	12.410	324.510	4273.49	297.66	430.73	-271.40	40°22'36.139"N	104°13'21.457"W	0.38	
4406.00	12.260	326.670	4335.03	305.94	441.83	-279.00	40°22'36.249"N	104°13'21.556"W	0.77	
4468.00	12.480	328.790	4395.59	313.71	453.06	-286.09	40°22'36.360"N	104°13'21.647"W	0.81	
4531.00	12.270	329.060	4457.13	321.39	464.62	-293.06	40°22'36.474"N	104°13'21.737"W	0.35	



# Actual Wellpath Report

STATE PRONGHORN 41-29-30XRLNB AWP

Page 4 of 11



## REFERENCE WELLPATH IDENTIFICATION

Operator	BONANZA CREEK OIL COMPANY	Slot	SLOT#11 STATE PRONGHORN 41-29-30XRLNB (1317'FNL & 548'FWL, SEC.28)
Area	COLORADO	Well	STATE PRONGHORN 41-29-30XRLNB
Field	WELD COUNTY	Wellbore	STATE PRONGHORN 41-29-30XRLNB AWP
Facility	SEC.28-T05N-R61W		

## WELLPATH DATA (208 stations)

MD [ft]	Inclination [°]	Azimuth [°]	TVD [ft]	Vert Sect [ft]	North [ft]	East [ft]	Latitude	Longitude	DLS [°/100ft]	Comments
4594.00	12.470	328.600	4518.67	329.08	476.17	-300.04	40°22'36.588"N	104°13'21.828"W	0.35	
4656.00	12.460	326.620	4579.21	336.94	487.47	-307.21	40°22'36.700"N	104°13'21.920"W	0.69	
4719.00	12.210	324.490	4640.75	345.22	498.56	-314.82	40°22'36.809"N	104°13'22.019"W	0.82	
4781.00	12.350	322.010	4701.33	353.75	509.13	-322.71	40°22'36.914"N	104°13'22.121"W	0.88	
4843.00	12.330	322.270	4761.90	362.52	519.59	-330.84	40°22'37.017"N	104°13'22.226"W	0.10	
4906.00	12.250	323.860	4823.46	371.23	530.31	-338.90	40°22'37.123"N	104°13'22.330"W	0.55	
4969.00	12.280	327.670	4885.02	379.43	541.36	-346.43	40°22'37.232"N	104°13'22.427"W	1.29	
5032.00	12.470	328.620	4946.56	387.25	552.83	-353.55	40°22'37.346"N	104°13'22.519"W	0.44	
5094.00	12.320	326.990	5007.11	395.03	564.09	-360.64	40°22'37.457"N	104°13'22.611"W	0.61	
5157.00	12.420	327.900	5068.65	402.98	575.47	-367.90	40°22'37.569"N	104°13'22.704"W	0.35	
5219.00	12.380	328.760	5129.20	410.66	586.80	-374.89	40°22'37.681"N	104°13'22.795"W	0.30	
5282.00	12.250	328.970	5190.75	418.31	598.30	-381.84	40°22'37.795"N	104°13'22.885"W	0.22	
5345.00	12.310	328.400	5252.31	425.97	609.75	-388.80	40°22'37.908"N	104°13'22.975"W	0.21	
5407.00	12.170	329.740	5312.90	433.42	621.02	-395.56	40°22'38.020"N	104°13'23.062"W	0.51	
5470.00	12.430	330.320	5374.46	440.83	632.65	-402.26	40°22'38.134"N	104°13'23.148"W	0.46	
5532.00	12.350	331.180	5435.01	448.04	644.26	-408.76	40°22'38.249"N	104°13'23.232"W	0.32	
5595.00	12.250	330.110	5496.57	455.34	655.95	-415.34	40°22'38.365"N	104°13'23.317"W	0.40	
5658.00	15.590	319.870	5557.72	464.87	668.23	-424.13	40°22'38.486"N	104°13'23.431"W	6.57	
5720.00	21.000	304.000	5616.60	480.23	680.82	-438.73	40°22'38.610"N	104°13'23.620"W	11.79	
5783.00	26.520	289.370	5674.29	503.53	691.82	-461.40	40°22'38.719"N	104°13'23.913"W	12.76	
5846.00	31.730	277.790	5729.35	533.63	698.74	-491.12	40°22'38.787"N	104°13'24.297"W	12.15	
5908.00	36.700	274.670	5780.60	568.44	702.46	-525.77	40°22'38.824"N	104°13'24.744"W	8.50	
5971.00	42.320	277.750	5829.19	608.45	706.86	-565.58	40°22'38.868"N	104°13'25.259"W	9.45	
6034.00	47.790	280.950	5873.69	652.78	714.16	-609.54	40°22'38.940"N	104°13'25.827"W	9.40	
6096.00	54.000	280.820	5912.77	700.47	723.23	-656.76	40°22'39.029"N	104°13'26.437"W	10.02	
6159.00	58.020	280.050	5947.99	752.32	732.69	-708.12	40°22'39.123"N	104°13'27.101"W	6.46	
6222.00	60.270	275.290	5980.31	806.24	739.87	-761.70	40°22'39.194"N	104°13'27.793"W	7.40	
6284.00	66.570	270.540	6008.05	861.64	742.63	-817.03	40°22'39.221"N	104°13'28.508"W	12.25	
6347.00	71.670	265.470	6030.51	920.17	740.54	-875.81	40°22'39.200"N	104°13'29.267"W	11.05	
6409.00	75.080	264.580	6048.25	978.91	735.38	-934.99	40°22'39.149"N	104°13'30.032"W	5.67	



# Actual Wellpath Report

STATE PRONGHORN 41-29-30XRLNB AWP

Page 5 of 11



## REFERENCE WELLPATH IDENTIFICATION

Operator	BONANZA CREEK OIL COMPANY	Slot	SLOT#11 STATE PRONGHORN 41-29-30XRLNB (1317'FNL & 548'FWL, SEC.28)
Area	COLORADO	Well	STATE PRONGHORN 41-29-30XRLNB
Field	WELD COUNTY	Wellbore	STATE PRONGHORN 41-29-30XRLNB AWP
Facility	SEC.28-T05N-R61W		

## WELLPATH DATA (208 stations) † = interpolated/extrapolated station

MD [ft]	Inclination [°]	Azimuth [°]	TVD [ft]	Vert Sect [ft]	North [ft]	East [ft]	Latitude	Longitude	DLS [°/100ft]	Comments
6472.00	76.280	263.590	6063.83	1039.12	729.09	-995.70	40°22'39.087"N	104°13'30.816"W	2.44	
6500.00†	78.796	263.653	6069.87	1066.05	726.05	-1022.87	40°22'39.057"N	104°13'31.167"W	8.99	TOP OF PRODUCTION (589'FNL & 473'FEL, SEC.29, NENE, 40.377516,-104.225325)
6535.00	81.940	263.730	6075.73	1100.04	722.26	-1057.16	40°22'39.020"N	104°13'31.610"W	8.99	
6597.00	87.230	264.010	6081.57	1160.86	715.67	-1118.51	40°22'38.955"N	104°13'32.403"W	8.54	
6660.00	89.780	265.630	6083.22	1223.10	709.99	-1181.23	40°22'38.898"N	104°13'33.214"W	4.79	
6723.00	89.970	265.130	6083.36	1285.46	704.91	-1244.02	40°22'38.848"N	104°13'34.025"W	0.85	
6785.00	89.970	264.740	6083.39	1346.75	699.44	-1305.78	40°22'38.794"N	104°13'34.823"W	0.63	
6848.00	89.850	264.820	6083.49	1409.01	693.71	-1368.52	40°22'38.737"N	104°13'35.633"W	0.23	
6910.00	90.120	265.250	6083.50	1470.33	688.34	-1430.28	40°22'38.684"N	104°13'36.432"W	0.82	
6973.00	89.880	265.390	6083.50	1532.68	683.20	-1493.07	40°22'38.634"N	104°13'37.243"W	0.44	
7036.00	90.090	265.480	6083.52	1595.04	678.19	-1555.87	40°22'38.584"N	104°13'38.054"W	0.36	
7098.00	90.120	266.080	6083.41	1656.47	673.63	-1617.71	40°22'38.539"N	104°13'38.853"W	0.97	
7161.00	89.750	265.890	6083.48	1718.92	669.21	-1680.55	40°22'38.495"N	104°13'39.665"W	0.66	
7224.00	89.820	264.980	6083.71	1781.29	664.20	-1743.35	40°22'38.446"N	104°13'40.477"W	1.45	
7286.00	89.970	267.020	6083.83	1842.74	659.88	-1805.20	40°22'38.403"N	104°13'41.276"W	3.30	
7349.00	89.910	266.860	6083.89	1905.32	656.51	-1868.11	40°22'38.370"N	104°13'42.089"W	0.27	
7412.00	89.940	265.120	6083.98	1967.77	652.11	-1930.95	40°22'38.326"N	104°13'42.901"W	2.76	
7474.00	89.940	264.020	6084.04	2029.01	646.24	-1992.67	40°22'38.268"N	104°13'43.698"W	1.77	
7537.00	89.910	263.910	6084.12	2091.12	639.62	-2055.32	40°22'38.202"N	104°13'44.508"W	0.18	
7600.00	90.000	263.810	6084.17	2153.22	632.88	-2117.96	40°22'38.136"N	104°13'45.317"W	0.21	
7662.00	90.060	262.210	6084.14	2214.17	625.33	-2179.50	40°22'38.061"N	104°13'46.112"W	2.58	
7724.00	90.090	264.800	6084.06	2275.21	618.32	-2241.09	40°22'37.992"N	104°13'46.908"W	4.18	
7787.00	89.850	268.370	6084.09	2337.73	614.57	-2303.97	40°22'37.955"N	104°13'47.720"W	5.68	
7850.00	89.910	270.130	6084.22	2400.55	613.74	-2366.96	40°22'37.947"N	104°13'48.534"W	2.80	
7913.00	89.820	268.340	6084.37	2463.37	612.90	-2429.96	40°22'37.938"N	104°13'49.348"W	2.84	
7975.00	89.820	266.530	6084.57	2525.01	610.13	-2491.89	40°22'37.911"N	104°13'50.149"W	2.92	
8038.00	89.970	265.840	6084.68	2587.49	605.94	-2554.75	40°22'37.869"N	104°13'50.961"W	1.12	
8101.00	89.970	266.350	6084.72	2649.96	601.65	-2617.60	40°22'37.827"N	104°13'51.773"W	0.81	
8163.00	90.000	268.200	6084.73	2711.58	598.70	-2679.53	40°22'37.798"N	104°13'52.573"W	2.98	
8226.00	90.060	270.710	6084.70	2774.41	598.10	-2742.52	40°22'37.792"N	104°13'53.387"W	3.99	



# Actual Wellpath Report

STATE PRONGHORN 41-29-30XRLNB AWP

Page 6 of 11



## REFERENCE WELLPATH IDENTIFICATION

Operator	BONANZA CREEK OIL COMPANY	Slot	SLOT#11 STATE PRONGHORN 41-29-30XRLNB (1317'FNL & 548'FWL, SEC.28)
Area	COLORADO	Well	STATE PRONGHORN 41-29-30XRLNB
Field	WELD COUNTY	Wellbore	STATE PRONGHORN 41-29-30XRLNB AWP
Facility	SEC.28-T05N-R61W		

## WELLPATH DATA (208 stations)

MD [ft]	Inclination [°]	Azimuth [°]	TVD [ft]	Vert Sect [ft]	North [ft]	East [ft]	Latitude	Longitude	DLS [°/100ft]	Comments
8347.00	90.060	271.480	6084.57	2895.30	600.41	-2863.50	40°22'37.814"N	104°13'54.950"W	0.64	
8439.00	90.250	273.040	6084.32	2987.27	604.04	-2955.42	40°22'37.850"N	104°13'56.138"W	1.71	
8532.00	90.150	272.500	6084.00	3080.26	608.53	-3048.32	40°22'37.894"N	104°13'57.338"W	0.59	
8621.00	90.120	270.950	6083.79	3169.21	611.21	-3137.27	40°22'37.921"N	104°13'58.488"W	1.74	
8711.00	90.000	270.730	6083.69	3259.11	612.53	-3227.26	40°22'37.934"N	104°13'59.650"W	0.28	
8801.00	90.280	271.310	6083.48	3349.02	614.13	-3317.25	40°22'37.949"N	104°14'00.813"W	0.72	
8890.00	89.970	270.600	6083.28	3437.93	615.62	-3406.23	40°22'37.964"N	104°14'01.963"W	0.87	
8979.00	90.280	266.690	6083.09	3526.58	613.51	-3495.19	40°22'37.943"N	104°14'03.112"W	4.41	
9070.00	90.120	264.760	6082.77	3616.73	606.73	-3585.93	40°22'37.876"N	104°14'04.285"W	2.13	
9160.00	90.090	264.050	6082.60	3705.58	597.96	-3675.50	40°22'37.789"N	104°14'05.442"W	0.79	
9251.00	90.090	263.580	6082.46	3795.26	588.15	-3765.97	40°22'37.692"N	104°14'06.611"W	0.52	
9337.00	89.940	265.030	6082.44	3880.14	579.62	-3851.55	40°22'37.607"N	104°14'07.717"W	1.70	
9428.00	89.910	267.970	6082.56	3970.44	574.06	-3942.37	40°22'37.552"N	104°14'08.890"W	3.23	
9517.00	90.150	269.380	6082.51	4059.11	572.01	-4031.34	40°22'37.532"N	104°14'10.040"W	1.61	
9606.00	90.090	269.650	6082.32	4147.89	571.25	-4120.34	40°22'37.524"N	104°14'11.190"W	0.31	
9695.00	90.150	269.490	6082.14	4236.67	570.58	-4209.34	40°22'37.518"N	104°14'12.340"W	0.19	
9784.00	90.150	270.300	6081.91	4325.49	570.42	-4298.33	40°22'37.516"N	104°14'13.490"W	0.91	
9873.00	89.970	270.260	6081.81	4414.34	570.86	-4387.33	40°22'37.520"N	104°14'14.639"W	0.21	
9963.00	90.180	270.380	6081.69	4504.20	571.36	-4477.33	40°22'37.525"N	104°14'15.802"W	0.27	
10053.00	90.090	268.960	6081.48	4593.99	570.84	-4567.33	40°22'37.519"N	104°14'16.965"W	1.58	
10144.00	90.030	266.150	6081.39	4684.48	566.96	-4658.24	40°22'37.481"N	104°14'18.140"W	3.09	
10235.00	89.910	265.360	6081.43	4774.63	560.22	-4748.98	40°22'37.414"N	104°14'19.312"W	0.88	
10325.00	89.690	265.090	6081.75	4863.68	552.73	-4838.67	40°22'37.340"N	104°14'20.471"W	0.39	
10415.00	88.863	270.850	6082.89	4953.21	549.54	-4928.57	40°22'37.308"N	104°14'21.633"W	6.47	
10503.00	89.050	273.090	6084.49	5041.15	552.57	-5016.50	40°22'37.338"N	104°14'22.769"W	2.55	
10593.00	88.950	273.520	6086.06	5131.14	557.76	-5106.33	40°22'37.389"N	104°14'23.930"W	0.49	
10684.00	89.020	274.060	6087.67	5222.12	563.77	-5197.12	40°22'37.448"N	104°14'25.103"W	0.60	
10775.00	89.850	274.660	6088.57	5313.11	570.69	-5287.85	40°22'37.517"N	104°14'26.275"W	1.13	
10867.00	89.780	275.160	6088.87	5405.08	578.56	-5379.51	40°22'37.594"N	104°14'27.459"W	0.55	
10958.00	90.000	275.120	6089.04	5496.05	586.72	-5470.15	40°22'37.675"N	104°14'28.631"W	0.25	



# Actual Wellpath Report

STATE PRONGHORN 41-29-30XRLNB AWP

Page 7 of 11



REFERENCE WELLPATH IDENTIFICATION			
Operator	BONANZA CREEK OIL COMPANY	Slot	SLOT#11 STATE PRONGHORN 41-29-30XRLNB (1317'FNL & 548'FWL, SEC.28)
Area	COLORADO	Well	STATE PRONGHORN 41-29-30XRLNB
Field	WELD COUNTY	Wellbore	STATE PRONGHORN 41-29-30XRLNB AWP
Facility	SEC.28-T05N-R61W		

WELLPATH DATA (208 stations)										
MD [ft]	Inclination [°]	Azimuth [°]	TVD [ft]	Vert Sect [ft]	North [ft]	East [ft]	Latitude	Longitude	DLS [°/100ft]	Comments
11047.00	90.150	273.700	6088.92	5585.04	593.56	-5558.88	40°22'37.742"N	104°14'29.777"W	1.60	
11139.00	90.340	271.630	6088.53	5677.02	597.84	-5650.78	40°22'37.784"N	104°14'30.964"W	2.26	
11229.00	90.220	269.950	6088.09	5766.91	599.08	-5740.76	40°22'37.796"N	104°14'32.127"W	1.87	
11319.00	90.150	269.970	6087.80	5856.73	599.01	-5830.76	40°22'37.795"N	104°14'33.290"W	0.08	
11409.00	90.030	269.670	6087.66	5946.54	598.73	-5920.76	40°22'37.792"N	104°14'34.453"W	0.36	
11501.00	89.850	270.450	6087.76	6038.36	598.83	-6012.76	40°22'37.793"N	104°14'35.642"W	0.87	
11593.00	89.050	270.750	6088.64	6130.24	599.79	-6104.75	40°22'37.802"N	104°14'36.830"W	0.93	
11683.00	88.800	270.900	6090.33	6220.12	601.09	-6194.72	40°22'37.815"N	104°14'37.993"W	0.32	
11775.00	89.010	272.770	6092.09	6312.05	604.03	-6286.66	40°22'37.844"N	104°14'39.181"W	2.05	
11867.00	90.150	272.500	6092.76	6404.04	608.26	-6378.56	40°22'37.885"N	104°14'40.368"W	1.27	
11959.00	90.150	272.820	6092.52	6496.03	612.53	-6470.46	40°22'37.927"N	104°14'41.556"W	0.35	
12041.00	90.060	271.130	6092.37	6577.99	615.36	-6552.40	40°22'37.955"N	104°14'42.615"W	2.06	
12131.00	90.520	278.600	6091.91	6667.90	622.98	-6642.01	40°22'38.030"N	104°14'43.772"W	8.32	
12223.00	90.000	280.180	6091.49	6759.42	637.99	-6732.78	40°22'38.178"N	104°14'44.945"W	1.81	
12313.00	89.850	275.400	6091.61	6849.15	650.19	-6821.92	40°22'38.298"N	104°14'46.097"W	5.31	
12404.00	90.000	274.630	6091.73	6940.12	658.14	-6912.57	40°22'38.377"N	104°14'47.268"W	0.86	
12493.00	89.880	269.980	6091.83	7029.08	661.72	-7001.48	40°22'38.412"N	104°14'48.417"W	5.23	
12581.00	90.120	271.210	6091.83	7116.96	662.64	-7089.47	40°22'38.421"N	104°14'49.554"W	1.42	
12671.00	89.880	268.850	6091.83	7206.78	662.68	-7179.46	40°22'38.421"N	104°14'50.717"W	2.64	
12762.00	89.880	262.770	6092.02	7296.90	656.04	-7270.18	40°22'38.355"N	104°14'51.889"W	6.68	
12852.00	90.250	261.980	6091.91	7385.19	644.10	-7359.38	40°22'38.237"N	104°14'53.042"W	0.97	
12942.00	89.910	263.500	6091.79	7473.59	632.72	-7448.66	40°22'38.124"N	104°14'54.195"W	1.73	
13032.00	90.030	265.860	6091.84	7562.50	624.38	-7538.26	40°22'38.041"N	104°14'55.353"W	2.63	
13123.00	90.000	269.230	6091.81	7652.99	620.48	-7629.17	40°22'38.003"N	104°14'56.527"W	3.70	
13212.00	89.850	268.460	6091.93	7741.68	618.69	-7718.15	40°22'37.985"N	104°14'57.677"W	0.88	
13303.00	90.000	270.940	6092.05	7832.47	618.21	-7809.14	40°22'37.980"N	104°14'58.853"W	2.73	
13392.00	89.910	271.600	6092.12	7921.40	620.18	-7898.12	40°22'37.999"N	104°15'00.002"W	0.75	
13479.00	89.910	272.410	6092.25	8008.36	623.23	-7985.06	40°22'38.029"N	104°15'01.126"W	0.93	
13569.00	89.880	272.090	6092.42	8098.34	626.76	-8074.99	40°22'38.063"N	104°15'02.288"W	0.36	
13659.00	90.000	270.520	6092.51	8188.27	628.81	-8164.97	40°22'38.083"N	104°15'03.450"W	1.75	





# Actual Wellpath Report

STATE PRONGHORN 41-29-30XRLNB AWP

Page 8 of 11



REFERENCE WELLPATH IDENTIFICATION			
Operator	BONANZA CREEK OIL COMPANY	Slot	SLOT#11 STATE PRONGHORN 41-29-30XRLNB (1317'FNL & 548'FWL, SEC.28)
Area	COLORADO	Well	STATE PRONGHORN 41-29-30XRLNB
Field	WELD COUNTY	Wellbore	STATE PRONGHORN 41-29-30XRLNB AWP
Facility	SEC.28-T05N-R61W		

WELLPATH DATA (208 stations)										
MD (ft)	Inclination (°)	Azimuth (°)	TVD (ft)	Vert Sect (ft)	North (ft)	East (ft)	Latitude	Longitude	DLS (°/100ft)	Comments
13748.00	89.820	269.590	6092.65	8277.10	628.89	-8253.96	40°22'38.084"N	104°15'04.600"W	1.06	
13839.00	89.850	271.940	6092.91	8367.98	630.11	-8344.95	40°22'38.095"N	104°15'05.776"W	2.58	
13929.00	89.910	272.400	6093.10	8457.96	633.52	-8434.88	40°22'38.129"N	104°15'06.938"W	0.52	
14019.00	90.000	272.940	6093.17	8547.95	637.71	-8524.79	40°22'38.170"N	104°15'08.100"W	0.61	
14108.00	89.970	273.430	6093.20	8636.94	642.65	-8613.65	40°22'38.218"N	104°15'09.248"W	0.55	
14198.00	89.320	272.950	6093.75	8726.94	647.66	-8703.51	40°22'38.268"N	104°15'10.409"W	0.90	
14288.00	88.860	270.240	6095.18	8816.87	650.17	-8793.45	40°22'38.292"N	104°15'11.571"W	3.05	
14379.00	88.860	269.510	6096.99	8907.66	649.97	-8884.43	40°22'38.290"N	104°15'12.747"W	0.80	
14469.00	89.970	267.840	6097.91	8997.32	647.89	-8974.40	40°22'38.269"N	104°15'13.909"W	2.23	
14559.00	90.000	267.660	6097.94	9086.86	644.35	-9064.33	40°22'38.234"N	104°15'15.071"W	0.20	
14649.00	90.060	268.000	6097.89	9176.41	640.95	-9154.27	40°22'38.200"N	104°15'16.233"W	0.38	
14739.00	89.630	268.910	6098.13	9266.05	638.52	-9244.23	40°22'38.175"N	104°15'17.396"W	1.12	
14829.00	89.540	269.560	6098.79	9355.79	637.32	-9334.22	40°22'38.163"N	104°15'18.558"W	0.73	
14920.00	89.660	268.860	6099.42	9446.52	636.06	-9425.21	40°22'38.150"N	104°15'19.734"W	0.78	
15008.00	89.880	266.540	6099.77	9534.05	632.53	-9513.13	40°22'38.115"N	104°15'20.870"W	2.65	
15099.00	89.750	266.590	6100.07	9624.38	627.08	-9603.97	40°22'38.061"N	104°15'22.044"W	0.15	
15186.00	89.910	268.670	6100.33	9710.90	623.48	-9690.89	40°22'38.025"N	104°15'23.167"W	2.40	
15275.00	90.000	272.460	6100.40	9799.77	624.36	-9779.87	40°22'38.033"N	104°15'24.317"W	4.26	
15365.00	88.890	274.590	6101.27	9889.75	629.89	-9869.69	40°22'38.088"N	104°15'25.477"W	2.67	
15455.00	88.860	273.310	6103.04	9979.73	636.09	-9959.45	40°22'38.149"N	104°15'26.637"W	1.42	
15546.00	88.860	270.570	6104.85	10070.67	639.17	-10050.37	40°22'38.179"N	104°15'27.812"W	3.01	
15635.00	88.770	269.210	6106.69	10159.47	639.00	-10139.35	40°22'38.177"N	104°15'28.962"W	1.53	
15725.00	90.150	268.360	6107.53	10249.15	637.09	-10229.33	40°22'38.157"N	104°15'30.124"W	1.80	
15813.00	90.030	273.180	6107.40	10337.02	638.27	-10317.29	40°22'38.169"N	104°15'31.261"W	5.48	
15903.00	90.120	263.250	6107.28	10426.51	635.47	-10407.14	40°22'38.141"N	104°15'32.422"W	11.03	
15995.00	90.030	258.280	6107.16	10516.20	620.71	-10497.91	40°22'37.994"N	104°15'33.595"W	5.40	
16084.00	90.120	256.030	6107.04	10601.56	600.93	-10584.68	40°22'37.799"N	104°15'34.716"W	2.53	LAST BHI MWD SURVEY
16112.00	90.120	256.030	6106.98	10628.26	594.17	-10611.85	40°22'37.732"N	104°15'35.067"W	0.00	PROJECTION TO BIT (659'FNL & 536'FWL, SEC.30, NWNW, LOT 1, 40.377149, -104.259741)



# Actual Wellpath Report

STATE PRONGHORN 41-29-30XRLNB AWP

Page 9 of 11



REFERENCE WELLPATH IDENTIFICATION			
Operator	BONANZA CREEK OIL COMPANY	Slot	SLOT#11 STATE PRONGHORN 41-29-30XRLNB (1317'FNL & 548'FWL, SEC.28)
Area	COLORADO	Well	STATE PRONGHORN 41-29-30XRLNB
Field	WELD COUNTY	Wellbore	STATE PRONGHORN 41-29-30XRLNB AWP
Facility	SEC.28-T05N-R61W		

TARGETS								
Name	TVD [ft]	North [ft]	East [ft]	Grid East [US ft]	Grid North [US ft]	Latitude	Longitude	Shape
SEC.29-T05N-R61W	0.00	-0.18	0.14	3356149.23	1382210.53	40°22'31.881"N	104°13'17.949"W	polygon
SEC.30-T05N-R61W	0.00	-0.18	0.14	3356149.23	1382210.53	40°22'31.881"N	104°13'17.949"W	polygon
SEC.28-T05N-R61W	22.80	-2737.06	-191.44	3355997.14	1379471.29	40°22'04.836"N	104°13'20.424"W	polygon
STATE PRONGHORN 41-29-30XRLNB BHL REV-1 (590'FNL & 470'FWL, SEC.30)	6059.00	665.27	-10678.41	3345462.65	1382721.95	40°22'38.434"N	104°15'35.927"W	point
STATE PRONGHORN 41-29-30XRLNB LP REV-2 (599'FNL & 460'FEL, SEC.29)	6059.00	714.07	-1009.83	3355129.11	1382910.12	40°22'38.939"N	104°13'30.999"W	point
STATE PRONGHORN 41-29-30XRLNB MID LATERAL REV-1 (572'FNL & 0'FWL, SEC.29)	6059.00	592.32	-5874.48	3350266.93	1382718.26	40°22'37.729"N	104°14'33.855"W	point
STATE PRONGHORN 41-29-30XRLNB BHL (590'FNL & 470'FWL, SEC.30)	6064.00	665.27	-10678.41	3345462.65	1382721.95	40°22'38.434"N	104°15'35.927"W	point
STATE PRONGHORN 41-29-30XRLNB LP (599'FNL & 531'FEL, SEC.29)	6064.00	714.07	-1080.83	3355058.12	1382909.09	40°22'38.939"N	104°13'31.916"W	point
STATE PRONGHORN 41-29-30XRLNB LP REV-1 (599'FNL & 460'FEL, SEC.29)	6064.00	714.07	-1009.83	3355129.11	1382910.12	40°22'38.939"N	104°13'30.999"W	point
STATE PRONGHORN 41-29-30XRLNB MID LATERAL (572'FNL & 0'FWL, SEC.29)	6064.00	592.34	-5874.45	3350266.96	1382718.28	40°22'37.729"N	104°14'33.855"W	point
SEC.29-T05N-R61W (460'FEL SETBACK)	6074.00	-0.18	0.14	3356149.23	1382210.53	40°22'31.881"N	104°13'17.949"W	polygon
SEC.30-T05N-R61W (460'FWL SETBACK)	6074.00	-0.18	0.14	3356149.23	1382210.53	40°22'31.881"N	104°13'17.949"W	polygon



# Actual Wellpath Report

STATE PRONGHORN 41-29-30XRLNB AWP



REFERENCE WELLPATH IDENTIFICATION			
Operator	BONANZA CREEK OIL COMPANY	Slot	SLOT#11 STATE PRONGHORN 41-29-30XRLNB (1317'FNL & 548'FWL, SEC.28)
Area	COLORADO	Well	STATE PRONGHORN 41-29-30XRLNB
Field	WELD COUNTY	Wellbore	STATE PRONGHORN 41-29-30XRLNB AWB
Facility	SEC.28-T05N-R61W		

WELLPATH COMPOSITION - Ref Wellbore: STATE PRONGHORN 41-29-30XRLNB AWB      Ref Wellpath: STATE PRONGHORN 41-29-30XRLNB AWP				
Start MD [ft]	End MD [ft]	Positional Uncertainty Model	Log Name/Comment	Wellbore
17.00	1558.00	Custom BHI NaviTrak (Standard Rotating) (Rockies 0.03Gt model)	BHI MWD NAVITRAK +SR+ROCKIES <228-1558>	STATE PRONGHORN 41-29-30XRLNB AWB
1558.00	16084.00	Custom BHI AutoTrak Curve (Short) (Rockies 0.03Gt model)	BHI ATCURVE+SHORT+ROCKIES <1652-16084>	STATE PRONGHORN 41-29-30XRLNB AWB
16084.00	16112.00	Blind Drilling (std)	Projection to bit	STATE PRONGHORN 41-29-30XRLNB AWB



# Actual Wellpath Report

STATE PRONGHORN 41-29-30XRLNB AWP

Page 11 of 11



REFERENCE WELLPATH IDENTIFICATION			
Operator	BONANZA CREEK OIL COMPANY	Slot	SLOT#11 STATE PRONGHORN 41-29-30XRLNB (1317'FNL & 548'FWL, SEC.28)
Area	COLORADO	Well	STATE PRONGHORN 41-29-30XRLNB
Field	WELD COUNTY	Wellbore	STATE PRONGHORN 41-29-30XRLNB AWP
Facility	SEC.28-T05N-R61W		

WELLPATH COMMENTS				
MD [ft]	Inclination [°]	Azimuth [°]	TVD [ft]	Comment
228.00	1.070	356.260	227.99	FIRST BHI MWD SURVEY
6500.00	78.796	263.653	6069.87	TOP OF PRODUCTION (589'FNL & 473'FEL, SEC.29, NENE, 40.377516,-104.225325)
16084.00	90.120	256.030	6107.04	LAST BHI MWD SURVEY
16112.00	90.120	256.030	6106.98	PROJECTION TO BIT (659'FNL & 536'FWL, SEC.30, NWNW, LOT 1, 40.377149, -104.259741)