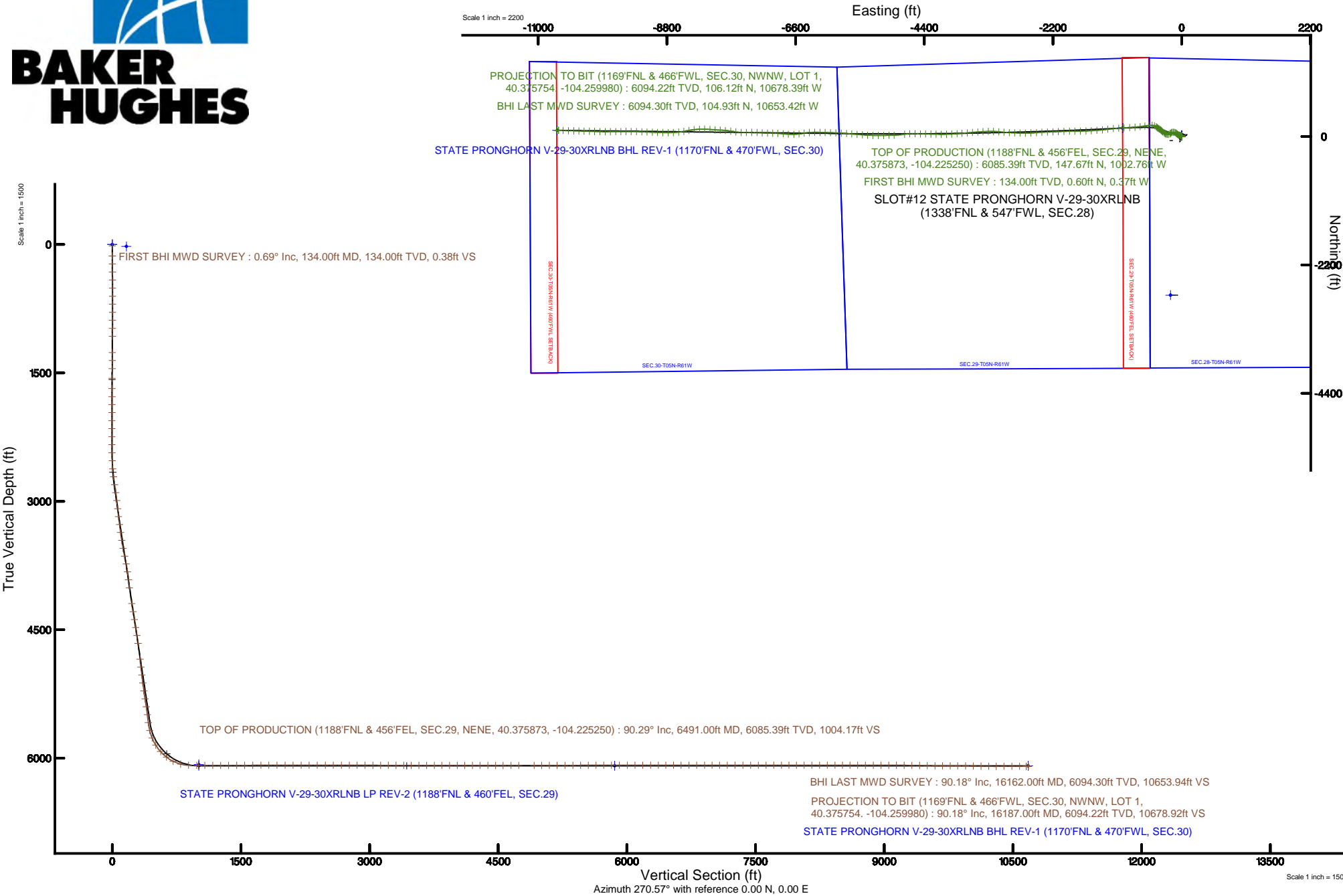


BONANZA CREEK OIL COMPANY

Location: COLORADO Slot: SLOT#12 STATE PRONGHORN V-29-30XRLNB (1338'FNL & 547'FWL, SEC.28)
Field: WELD COUNTY Well: STATE PRONGHORN V-29-30XRLNB
Facility: SEC.28-T05N-R61W Wellbore: STATE PRONGHORN V-29-30XRLNB PWB



Plot reference wellpath is STATE PRONGHORN V-29-30XRLNB PWB (REV-B.0)	Grid System: NAD83 / Lambert Colorado SP, Northern Zone (501), US feet
True vertical depths are referenced to RIG (17KB) (RKB)	* = Wellpath was transformed from a different geodetic datum
Measured depths are referenced to RIG (17KB) (RKB)	North Reference: True north
RIG (17KB) (RKB) to Mean Sea Level: 4635 feet	Scale: True distance
Mean Sea Level to Mud line (At Slot: SLOT#12 STATE PRONGHORN V-29-30XRLNB (1338'FNL & 547'FWL, SEC.28): 0 feet	Depths are in feet
Coordinates are in feet referenced to Slot	Created by: ingnjamr on 2018-05-03
	Database: Denver





Actual Wellpath Report

STATE PRONGHORN V-29-30XRLNB AWP

Page 1 of 9



REFERENCE WELLPATH IDENTIFICATION			
Operator	BONANZA CREEK OIL COMPANY	Slot	SLOT#12 STATE PRONGHORN V-29-30XRLNB (1338'FNL & 547'FWL, SEC.28)
Area	COLORADO	Well	STATE PRONGHORN V-29-30XRLNB
Field	WELD COUNTY	Wellbore	STATE PRONGHORN V-29-30XRLNB AWB
Facility	SEC.28-T05N-R61W		

REPORT SETUP INFORMATION			
Projection System	NAD83 / Lambert Colorado SP, Northern Zone (501), US feet	Software System	WellArchitect® 5.0
North Reference	True	User	Ingmjmr
Scale	0.999959	Report Generated	5/3/2018 at 12:59:05 PM
Convergence at slot	0.83° East	Database/Source file	Denver/STATE_PRONGHORN_V-29-30XRLNB_AWP.xml

WELLPATH LOCATION						
	Local coordinates		Grid coordinates		Geographic coordinates	
	North[ft]	East[ft]	Easting[US ft]	Northing[US ft]	Latitude	Longitude
Slot Location	68.49	157.70	3356149.10	1382190.67	40°22'31.685"N	104°13'17.954"W
Facility Reference Pt			3355992.41	1382119.92	40°22'31.008"N	104°13'19.992"W
Field Reference Pt			3224525.77	1254425.87	40°01'44.400"N	104°41'53.556"W

WELLPATH DATUM			
Calculation method	Minimum curvature	RIG (17'KB) (RKB) to Facility Vertical Datum	4635.00ft
Horizontal Reference Pt	Slot	RIG (17'KB) (RKB) to Mean Sea Level	4635.00ft
Vertical Reference Pt	RIG (17'KB) (RKB)	RIG (17'KB) (RKB) to Mud Line at Slot (SLOT#12 STATE PRONGHORN V-29-30XRLNB (1338'FNL & 547'FWL, SEC.28))	4635.00ft
MD Reference Pt	RIG (17'KB) (RKB)	Section Origin	N 0.00, E 0.00 ft
Field Vertical Reference	Mean Sea Level	Section Azimuth	270.57°



Actual Wellpath Report

STATE PRONGHORN V-29-30XRLNB AWP

Page 2 of 9



REFERENCE WELLPATH IDENTIFICATION

Operator	BONANZA CREEK OIL COMPANY	Slot	SLOT#12 STATE PRONGHORN V-29-30XRLNB (1338'FNL & 547'FWL, SEC.28)
Area	COLORADO	Well	STATE PRONGHORN V-29-30XRLNB
Field	WELD COUNTY	Wellbore	STATE PRONGHORN V-29-30XRLNB AWP
Facility	SEC.28-T05N-R61W		

WELLPATH DATA (175 stations) † = interpolated/extrapolated station

MD [ft]	Inclination [°]	Azimuth [°]	TVD [ft]	Vert Sect [ft]	North [ft]	East [ft]	Latitude	Longitude	DLS [°/100ft]	Comments
0.00†	0.000	328.030	0.00	0.00	0.00	0.00	40°22'31.685°N	104°13'17.954°W	0.00	
17.00	0.000	328.030	17.00	0.00	0.00	0.00	40°22'31.685°N	104°13'17.954°W	0.00	
134.00	0.690	328.030	134.00	0.38	0.60	-0.37	40°22'31.691°N	104°13'17.959°W	0.59	FIRST BHI MWD SURVEY
228.00	0.560	324.340	227.99	0.95	1.45	-0.94	40°22'31.699°N	104°13'17.967°W	0.14	
322.00	0.610	320.480	321.99	1.55	2.21	-1.53	40°22'31.707°N	104°13'17.974°W	0.07	
416.00	0.690	319.340	415.98	2.24	3.03	-2.21	40°22'31.715°N	104°13'17.983°W	0.09	
510.00	0.030	321.010	509.98	2.63	3.47	-2.60	40°22'31.719°N	104°13'17.988°W	0.70	
604.00	0.110	116.870	603.98	2.57	3.45	-2.53	40°22'31.719°N	104°13'17.987°W	0.15	
698.00	0.230	155.420	697.98	2.41	3.24	-2.37	40°22'31.717°N	104°13'17.985°W	0.17	
792.00	0.210	128.150	791.98	2.19	2.96	-2.16	40°22'31.714°N	104°13'17.982°W	0.11	
886.00	0.280	163.640	885.98	1.99	2.64	-1.96	40°22'31.711°N	104°13'17.980°W	0.17	
980.00	0.230	152.650	979.98	1.83	2.25	-1.81	40°22'31.707°N	104°13'17.978°W	0.07	
1074.00	0.140	146.550	1073.97	1.68	1.98	-1.66	40°22'31.704°N	104°13'17.976°W	0.10	
1262.00	0.340	120.130	1261.97	1.06	1.51	-1.05	40°22'31.700°N	104°13'17.968°W	0.12	
1356.00	0.680	123.670	1355.97	0.35	1.06	-0.34	40°22'31.695°N	104°13'17.959°W	0.36	
1450.00	0.430	109.750	1449.96	-0.45	0.63	0.45	40°22'31.691°N	104°13'17.949°W	0.30	
1562.00	0.610	113.010	1561.96	-1.39	0.26	1.40	40°22'31.687°N	104°13'17.936°W	0.16	
1683.00	0.830	82.310	1682.95	-2.86	0.13	2.86	40°22'31.686°N	104°13'17.917°W	0.36	
1777.00	1.030	357.980	1776.94	-3.49	1.06	3.50	40°22'31.695°N	104°13'17.909°W	1.34	
1871.00	0.030	216.440	1870.94	-3.44	1.89	3.46	40°22'31.703°N	104°13'17.910°W	1.12	
1963.00	0.370	190.300	1962.94	-3.38	1.57	3.39	40°22'31.700°N	104°13'17.911°W	0.37	
2057.00	0.680	92.790	2056.93	-3.88	1.25	3.89	40°22'31.697°N	104°13'17.904°W	0.87	
2152.00	0.820	5.050	2151.93	-4.50	1.90	4.52	40°22'31.704°N	104°13'17.896°W	1.10	
2245.00	0.940	261.690	2244.92	-3.80	2.45	3.82	40°22'31.709°N	104°13'17.905°W	1.49	
2339.00	0.740	92.530	2338.92	-3.64	2.31	3.66	40°22'31.708°N	104°13'17.907°W	1.78	
2433.00	1.690	315.180	2432.91	-3.26	3.27	3.29	40°22'31.717°N	104°13'17.912°W	2.44	
2527.00	3.970	321.930	2526.79	-0.24	6.81	0.31	40°22'31.752°N	104°13'17.950°W	2.45	
2622.00	6.380	314.350	2621.39	5.62	13.09	-5.49	40°22'31.814°N	104°13'18.025°W	2.63	
2715.00	7.660	294.750	2713.71	15.01	19.30	-14.82	40°22'31.876°N	104°13'18.146°W	2.90	
2809.00	8.810	269.520	2806.77	27.93	21.87	-27.71	40°22'31.901°N	104°13'18.312°W	4.00	



Actual Wellpath Report

STATE PRONGHORN V-29-30XRLNB AWP

Page 3 of 9



REFERENCE WELLPATH IDENTIFICATION

Operator	BONANZA CREEK OIL COMPANY	Slot	SLOT#12 STATE PRONGHORN V-29-30XRLNB (1338'FNL & 547'FWL, SEC.28)
Area	COLORADO	Well	STATE PRONGHORN V-29-30XRLNB
Field	WELD COUNTY	Wellbore	STATE PRONGHORN V-29-30XRLNB AWP
Facility	SEC.28-T05N-R61W		

WELLPATH DATA (175 stations)

MD [ft]	Inclination [°]	Azimuth [°]	TVD [ft]	Vert Sect [ft]	North [ft]	East [ft]	Latitude	Longitude	DLS [°/100ft]	Comments
2902.00	7.300	268.060	2898.85	40.95	21.61	-40.74	40°22'31.898"N	104°13'18.481"W	1.64	
2996.00	7.250	289.640	2992.11	52.52	23.40	-52.30	40°22'31.916"N	104°13'18.630"W	2.89	
3090.00	7.530	305.510	3085.34	63.18	28.97	-62.90	40°22'31.971"N	104°13'18.767"W	2.18	
3184.00	9.250	316.300	3178.33	73.50	38.01	-73.13	40°22'32.060"N	104°13'18.899"W	2.47	
3278.00	9.200	308.100	3271.12	84.74	48.11	-84.27	40°22'32.160"N	104°13'19.043"W	1.40	
3372.00	9.260	304.140	3363.90	97.00	56.99	-96.44	40°22'32.248"N	104°13'19.200"W	0.68	
3465.00	9.790	295.760	3455.63	110.39	64.63	-109.75	40°22'32.323"N	104°13'19.372"W	1.59	
3559.00	11.020	287.970	3548.08	126.19	70.87	-125.50	40°22'32.385"N	104°13'19.576"W	1.99	
3653.00	11.360	273.840	3640.31	144.01	74.26	-143.28	40°22'32.419"N	104°13'19.806"W	2.93	
3747.00	11.080	256.880	3732.54	162.03	72.83	-161.32	40°22'32.405"N	104°13'20.039"W	3.51	
3841.00	10.420	234.140	3824.93	177.66	65.80	-177.02	40°22'32.335"N	104°13'20.242"W	4.54	
3935.00	8.770	220.910	3917.63	189.14	55.40	-188.60	40°22'32.232"N	104°13'20.391"W	2.92	
4029.00	9.280	238.340	4010.48	200.19	46.01	-199.75	40°22'32.139"N	104°13'20.535"W	2.95	
4216.00	9.130	260.810	4195.13	227.58	35.72	-227.24	40°22'32.038"N	104°13'20.890"W	1.91	
4310.00	9.790	277.870	4287.87	242.86	35.62	-242.52	40°22'32.037"N	104°13'21.088"W	3.05	
4404.00	9.780	288.750	4380.51	258.37	39.28	-257.99	40°22'32.073"N	104°13'21.288"W	1.96	
4498.00	9.790	294.250	4473.15	273.27	45.13	-272.84	40°22'32.131"N	104°13'21.480"W	0.99	
4592.00	9.790	300.370	4565.78	287.53	52.46	-287.02	40°22'32.203"N	104°13'21.663"W	1.11	
4686.00	9.790	304.560	4658.41	301.09	61.03	-300.50	40°22'32.288"N	104°13'21.837"W	0.76	
4873.00	7.380	307.870	4843.30	323.83	77.42	-323.08	40°22'32.450"N	104°13'22.129"W	1.32	
4967.00	9.810	318.860	4936.25	333.96	87.16	-333.11	40°22'32.546"N	104°13'22.258"W	3.11	
5061.00	9.720	317.870	5028.89	344.67	99.08	-343.71	40°22'32.664"N	104°13'22.395"W	0.20	
5155.00	9.690	311.640	5121.54	356.01	110.22	-354.94	40°22'32.774"N	104°13'22.540"W	1.12	
5249.00	9.800	304.590	5214.19	368.61	120.02	-367.44	40°22'32.871"N	104°13'22.702"W	1.27	
5343.00	9.780	298.860	5306.82	382.27	128.41	-381.02	40°22'32.954"N	104°13'22.877"W	1.04	
5437.00	9.750	299.060	5399.46	396.29	136.13	-394.97	40°22'33.030"N	104°13'23.058"W	0.05	
5531.00	9.680	310.090	5492.12	409.38	145.09	-407.97	40°22'33.118"N	104°13'23.226"W	1.98	
5625.00	9.720	316.020	5584.78	421.05	155.89	-419.53	40°22'33.225"N	104°13'23.375"W	1.06	
5719.00	15.740	307.350	5676.44	436.84	169.35	-435.19	40°22'33.358"N	104°13'23.577"W	6.70	
5813.00	23.340	290.650	5765.02	464.60	183.68	-462.81	40°22'33.500"N	104°13'23.934"W	9.96	



Actual Wellpath Report

STATE PRONGHORN V-29-30XRLNB AWP

Page 4 of 9



REFERENCE WELLPATH IDENTIFICATION

Operator	BONANZA CREEK OIL COMPANY	Slot	SLOT#12 STATE PRONGHORN V-29-30XRLNB (1338'FNL & 547'FWL, SEC.28)
Area	COLORADO	Well	STATE PRONGHORN V-29-30XRLNB
Field	WELD COUNTY	Wellbore	STATE PRONGHORN V-29-30XRLNB AWP
Facility	SEC.28-T05N-R61W		

WELLPATH DATA (175 stations) † = interpolated/extrapolated station

MD [ft]	Inclination [°]	Azimuth [°]	TVD [ft]	Vert Sect [ft]	North [ft]	East [ft]	Latitude	Longitude	DLS [°/100ft]	Comments
5907.00	32.040	273.190	5848.32	507.15	191.66	-505.28	40°22'33.579"N	104°13'24.483"W	12.57	
6001.00	41.970	263.900	5923.35	563.46	189.71	-561.61	40°22'33.559"N	104°13'25.211"W	12.10	
6095.00	52.370	261.460	5987.17	631.62	180.81	-629.87	40°22'33.471"N	104°13'26.093"W	11.22	
6189.00	64.290	261.620	6036.43	710.49	169.07	-708.86	40°22'33.355"N	104°13'27.113"W	12.68	
6283.00	75.410	265.600	6068.77	797.94	159.38	-796.41	40°22'33.260"N	104°13'28.245"W	12.48	
6377.00	86.950	267.060	6083.16	890.42	153.46	-888.95	40°22'33.201"N	104°13'29.440"W	12.37	
6471.00	90.220	267.140	6085.48	984.21	148.71	-982.79	40°22'33.154"N	104°13'30.653"W	3.48	
6491.00†	90.290	266.897	6085.39	1004.17	147.67	-1002.76	40°22'33.144"N	104°13'30.911"W	1.26	TOP OF PRODUCTION (1188'FNL & 456'FEL, SEC.29, NENE, 40.375873, -104.225250)
6565.00	90.550	266.000	6084.85	1077.98	143.08	-1076.62	40°22'33.098"N	104°13'31.865"W	1.26	
6658.00	90.090	263.640	6084.33	1170.50	134.69	-1169.23	40°22'33.015"N	104°13'33.062"W	2.59	
6752.00	90.030	262.490	6084.23	1263.70	123.34	-1262.54	40°22'32.903"N	104°13'34.267"W	1.23	
6846.00	90.150	264.760	6084.09	1357.00	112.90	-1355.95	40°22'32.800"N	104°13'35.474"W	2.42	
6940.00	90.120	266.180	6083.86	1450.63	105.48	-1449.66	40°22'32.727"N	104°13'36.685"W	1.51	
7034.00	90.030	266.700	6083.74	1544.38	99.64	-1543.47	40°22'32.669"N	104°13'37.897"W	0.56	
7128.00	90.280	267.930	6083.49	1638.23	95.24	-1637.37	40°22'32.625"N	104°13'39.110"W	1.34	
7222.00	90.060	269.040	6083.21	1732.16	92.75	-1731.33	40°22'32.601"N	104°13'40.325"W	1.20	
7316.00	90.090	269.770	6083.09	1826.14	91.77	-1825.33	40°22'32.591"N	104°13'41.539"W	0.78	
7410.00	90.150	268.950	6082.89	1920.12	90.72	-1919.32	40°22'32.581"N	104°13'42.753"W	0.87	
7504.00	89.970	267.450	6082.79	2014.04	87.77	-2013.27	40°22'32.551"N	104°13'43.967"W	1.61	
7598.00	90.250	267.460	6082.61	2107.90	83.60	-2107.18	40°22'32.510"N	104°13'45.181"W	0.30	
7692.00	90.150	268.060	6082.28	2201.79	79.92	-2201.11	40°22'32.474"N	104°13'46.394"W	0.65	
7785.00	90.150	267.810	6082.04	2294.69	76.57	-2294.05	40°22'32.440"N	104°13'47.595"W	0.27	
7880.00	90.090	267.000	6081.84	2389.54	72.27	-2388.95	40°22'32.398"N	104°13'48.821"W	0.85	
7974.00	90.090	265.870	6081.69	2483.30	66.43	-2482.76	40°22'32.340"N	104°13'50.033"W	1.20	
8068.00	89.690	266.460	6081.87	2577.02	60.14	-2576.55	40°22'32.278"N	104°13'51.245"W	0.76	
8162.00	89.750	269.520	6082.33	2670.91	56.84	-2670.48	40°22'32.245"N	104°13'52.459"W	3.26	
8256.00	89.780	272.120	6082.72	2764.90	58.19	-2764.46	40°22'32.258"N	104°13'53.673"W	2.77	
8346.00	89.820	271.860	6083.03	2854.87	61.31	-2854.41	40°22'32.289"N	104°13'54.835"W	0.29	
8438.00	89.970	273.040	6083.20	2946.82	65.25	-2946.32	40°22'32.328"N	104°13'56.023"W	1.29	
8530.00	89.750	276.150	6083.42	3038.58	72.62	-3038.02	40°22'32.401"N	104°13'57.208"W	3.39	



Actual Wellpath Report

STATE PRONGHORN V-29-30XRLNB AWP

Page 5 of 9



REFERENCE WELLPATH IDENTIFICATION

Operator	BONANZA CREEK OIL COMPANY	Slot	SLOT#12 STATE PRONGHORN V-29-30XRLNB (1338'FNL & 547'FWL, SEC.28)
Area	COLORADO	Well	STATE PRONGHORN V-29-30XRLNB
Field	WELD COUNTY	Wellbore	STATE PRONGHORN V-29-30XRLNB AWP
Facility	SEC.28-T05N-R61W		

WELLPATH DATA (175 stations)

MD [ft]	Inclination [°]	Azimuth [°]	TVD [ft]	Vert Sect [ft]	North [ft]	East [ft]	Latitude	Longitude	DLS [°/100ft]	Comments
8620.00	89.970	274.890	6083.64	3128.25	81.27	-3127.60	40°22'32.486"N	104°13'58.365"W	1.42	
8710.00	90.000	271.740	6083.67	3218.13	86.48	-3217.43	40°22'32.537"N	104°13'59.526"W	3.50	
8800.00	89.940	268.840	6083.72	3308.12	86.93	-3307.42	40°22'32.542"N	104°14'00.689"W	3.22	
8889.00	89.880	266.640	6083.86	3397.01	83.42	-3396.35	40°22'32.507"N	104°14'01.838"W	2.47	
8978.00	89.910	265.990	6084.02	3485.76	77.70	-3485.16	40°22'32.450"N	104°14'02.985"W	0.73	
9068.00	89.850	264.780	6084.21	3575.39	70.46	-3574.87	40°22'32.379"N	104°14'04.144"W	1.35	
9159.00	89.940	264.580	6084.37	3665.91	62.02	-3665.48	40°22'32.295"N	104°14'05.315"W	0.24	
9249.00	90.000	264.800	6084.42	3755.44	53.69	-3755.09	40°22'32.213"N	104°14'06.473"W	0.25	
9336.00	89.910	266.080	6084.49	3842.09	46.78	-3841.81	40°22'32.144"N	104°14'07.593"W	1.47	
9427.00	89.850	267.640	6084.68	3932.90	41.79	-3932.68	40°22'32.095"N	104°14'08.767"W	1.72	
9515.00	89.910	267.970	6084.86	4020.79	38.42	-4020.61	40°22'32.061"N	104°14'09.904"W	0.38	
9604.00	89.880	270.880	6085.03	4109.77	37.53	-4109.60	40°22'32.052"N	104°14'11.053"W	3.27	
9694.00	89.820	271.550	6085.26	4199.76	39.44	-4199.57	40°22'32.071"N	104°14'12.216"W	0.75	
9782.00	89.910	271.200	6085.47	4287.75	41.55	-4287.55	40°22'32.092"N	104°14'13.353"W	0.41	
9872.00	89.820	271.060	6085.68	4377.75	43.33	-4377.53	40°22'32.109"N	104°14'14.515"W	0.18	
9962.00	89.910	271.120	6085.89	4467.74	45.04	-4467.51	40°22'32.126"N	104°14'15.678"W	0.12	
10051.00	90.120	272.440	6085.87	4556.72	47.80	-4556.47	40°22'32.153"N	104°14'16.827"W	1.50	
10143.00	90.180	266.810	6085.63	4648.67	47.20	-4648.43	40°22'32.147"N	104°14'18.015"W	6.12	
10233.00	90.150	261.900	6085.37	4738.11	38.35	-4737.97	40°22'32.059"N	104°14'19.172"W	5.46	
10413.00	90.150	268.140	6084.90	4917.18	22.73	-4917.20	40°22'31.905"N	104°14'21.488"W	3.47	
10501.00	90.090	269.130	6084.71	5005.13	20.64	-5005.17	40°22'31.884"N	104°14'22.625"W	1.13	
10591.00	90.000	268.830	6084.64	5095.10	19.03	-5095.16	40°22'31.868"N	104°14'23.787"W	0.35	
10682.00	90.150	270.160	6084.52	5186.08	18.23	-5186.15	40°22'31.860"N	104°14'24.963"W	1.47	
10774.00	90.250	271.280	6084.20	5278.08	19.39	-5278.14	40°22'31.871"N	104°14'26.152"W	1.22	
10866.00	90.180	272.980	6083.86	5370.04	22.81	-5370.07	40°22'31.904"N	104°14'27.339"W	1.85	
10956.00	90.220	274.660	6083.54	5459.89	28.80	-5459.87	40°22'31.963"N	104°14'28.500"W	1.87	
11046.00	90.090	274.620	6083.30	5549.66	36.08	-5549.58	40°22'32.035"N	104°14'29.659"W	0.15	
11137.00	90.120	274.610	6083.13	5640.43	43.41	-5640.28	40°22'32.107"N	104°14'30.831"W	0.03	
11227.00	90.120	274.530	6082.95	5730.21	50.58	-5729.99	40°22'32.178"N	104°14'31.990"W	0.09	
11317.00	90.120	273.480	6082.76	5820.05	56.86	-5819.77	40°22'32.240"N	104°14'33.150"W	1.17	



Actual Wellpath Report

STATE PRONGHORN V-29-30XRLNB AWP

Page 6 of 9



REFERENCE WELLPATH IDENTIFICATION

Operator	BONANZA CREEK OIL COMPANY	Slot	SLOT#12 STATE PRONGHORN V-29-30XRLNB (1338'FNL & 547'FWL, SEC.28)
Area	COLORADO	Well	STATE PRONGHORN V-29-30XRLNB
Field	WELD COUNTY	Wellbore	STATE PRONGHORN V-29-30XRLNB AWP
Facility	SEC.28-T05N-R61W		

WELLPATH DATA (175 stations)

MD [ft]	Inclination [°]	Azimuth [°]	TVD [ft]	Vert Sect [ft]	North [ft]	East [ft]	Latitude	Longitude	DLS [°/100ft]	Comments
11408.00	90.220	273.060	6082.49	5910.95	62.05	-5910.62	40°22'32.291"N	104°14'34.324"W	0.47	
11500.00	89.940	272.070	6082.36	6002.89	66.17	-6002.53	40°22'32.331"N	104°14'35.511"W	1.12	
11592.00	90.150	270.900	6082.29	6094.88	68.55	-6094.50	40°22'32.355"N	104°14'36.700"W	1.29	
11682.00	90.150	271.620	6082.05	6184.87	70.53	-6184.48	40°22'32.374"N	104°14'37.862"W	0.80	
11772.00	89.970	270.040	6081.96	6274.87	71.84	-6274.46	40°22'32.387"N	104°14'39.025"W	1.77	
11863.00	90.000	264.730	6081.98	6365.69	67.69	-6365.34	40°22'32.346"N	104°14'40.199"W	5.84	
11952.00	89.820	261.800	6082.12	6453.96	57.25	-6453.71	40°22'32.242"N	104°14'41.341"W	3.30	
12041.00	89.880	262.310	6082.35	6541.98	44.95	-6541.86	40°22'32.120"N	104°14'42.480"W	0.58	
12131.00	90.000	268.120	6082.45	6631.55	37.44	-6631.50	40°22'32.046"N	104°14'43.638"W	6.46	
12223.00	90.030	273.920	6082.42	6723.51	39.08	-6723.45	40°22'32.062"N	104°14'44.826"W	6.30	
12313.00	90.060	275.590	6082.35	6813.27	46.54	-6813.14	40°22'32.135"N	104°14'45.985"W	1.86	
12404.00	89.940	272.560	6082.35	6904.08	53.01	-6903.90	40°22'32.199"N	104°14'47.158"W	3.33	
12493.00	89.910	271.520	6082.47	6993.05	56.18	-6992.84	40°22'32.230"N	104°14'48.307"W	1.17	
12581.00	89.880	270.970	6082.63	7081.05	58.09	-7080.82	40°22'32.249"N	104°14'49.444"W	0.63	
12671.00	90.030	274.310	6082.70	7170.97	62.23	-7170.71	40°22'32.289"N	104°14'50.605"W	3.71	
12761.00	90.030	273.900	6082.65	7260.80	68.67	-7260.48	40°22'32.353"N	104°14'51.765"W	0.46	
12852.00	89.910	269.650	6082.70	7351.76	71.49	-7351.41	40°22'32.380"N	104°14'52.940"W	4.67	
12942.00	89.910	267.290	6082.84	7441.69	69.09	-7441.38	40°22'32.356"N	104°14'54.102"W	2.62	
13032.00	89.940	273.280	6082.96	7531.65	69.54	-7531.33	40°22'32.361"N	104°14'55.265"W	6.66	
13123.00	90.000	277.930	6083.01	7622.28	78.42	-7621.87	40°22'32.448"N	104°14'56.435"W	5.11	
13212.00	89.970	279.140	6083.03	7710.41	91.63	-7709.89	40°22'32.578"N	104°14'57.572"W	1.36	
13303.00	89.970	276.010	6083.08	7800.72	103.63	-7800.08	40°22'32.697"N	104°14'58.737"W	3.44	
13392.00	89.970	271.580	6083.13	7889.56	109.51	-7888.86	40°22'32.755"N	104°14'59.884"W	4.98	
13479.00	90.250	274.500	6082.96	7976.47	114.13	-7975.73	40°22'32.800"N	104°15'01.007"W	3.37	
13569.00	90.090	274.850	6082.69	8066.24	121.46	-8065.43	40°22'32.872"N	104°15'02.166"W	0.43	
13659.00	90.090	270.990	6082.55	8156.14	126.05	-8155.30	40°22'32.917"N	104°15'03.327"W	4.29	
13748.00	89.910	267.470	6082.55	8245.11	124.85	-8244.28	40°22'32.905"N	104°15'04.477"W	3.96	
13839.00	89.970	262.890	6082.65	8335.68	117.21	-8334.93	40°22'32.829"N	104°15'05.648"W	5.03	
13929.00	90.000	259.950	6082.67	8424.53	103.78	-8423.91	40°22'32.696"N	104°15'06.798"W	3.27	
14019.00	89.820	259.930	6082.81	8512.98	88.06	-8512.53	40°22'32.540"N	104°15'07.942"W	0.20	



Actual Wellpath Report

STATE PRONGHORN V-29-30XRLNB AWP

Page 7 of 9



REFERENCE WELLPATH IDENTIFICATION			
Operator	BONANZA CREEK OIL COMPANY	Slot	SLOT#12 STATE PRONGHORN V-29-30XRLNB (1338'FNL & 547'FWL, SEC.28)
Area	COLORADO	Well	STATE PRONGHORN V-29-30XRLNB
Field	WELD COUNTY	Wellbore	STATE PRONGHORN V-29-30XRLNB AWP
Facility	SEC.28-T05N-R61W		

WELLPATH DATA (175 stations)										
MD (ft)	Inclination [°]	Azimuth [°]	TVD (ft)	Vert Sect (ft)	North (ft)	East (ft)	Latitude	Longitude	DLS [°/100ft]	Comments
14108.00	89.880	262.970	6083.04	8600.85	74.83	-8600.53	40°22'32.409"N	104°15'09.079"W	3.42	
14198.00	89.970	268.510	6083.16	8690.49	68.15	-8690.24	40°22'32.343"N	104°15'10.239"W	6.16	
14288.00	89.880	270.070	6083.28	8780.47	67.03	-8780.24	40°22'32.332"N	104°15'11.401"W	1.74	
14379.00	89.940	270.720	6083.42	8871.47	67.66	-8871.23	40°22'32.338"N	104°15'12.577"W	0.72	
14469.00	90.030	271.650	6083.45	8961.46	69.52	-8961.21	40°22'32.356"N	104°15'13.740"W	1.04	
14559.00	90.000	272.220	6083.42	9051.44	72.56	-9051.16	40°22'32.385"N	104°15'14.902"W	0.63	
14649.00	90.060	272.780	6083.38	9141.38	76.49	-9141.07	40°22'32.424"N	104°15'16.064"W	0.63	
14739.00	89.850	272.410	6083.45	9231.33	80.56	-9230.98	40°22'32.464"N	104°15'17.225"W	0.47	
14829.00	88.950	271.110	6084.39	9321.30	83.32	-9320.93	40°22'32.491"N	104°15'18.388"W	1.76	
14920.00	89.020	271.090	6086.00	9412.28	85.07	-9411.90	40°22'32.508"N	104°15'19.563"W	0.08	
15008.00	89.020	269.640	6087.51	9500.27	85.63	-9499.88	40°22'32.513"N	104°15'20.700"W	1.65	
15098.00	88.950	269.330	6089.10	9590.24	84.82	-9589.87	40°22'32.505"N	104°15'21.862"W	0.35	
15186.00	90.090	269.300	6089.84	9678.21	83.77	-9677.85	40°22'32.494"N	104°15'22.999"W	1.30	
15275.00	90.000	269.320	6089.77	9767.19	82.70	-9766.85	40°22'32.483"N	104°15'24.149"W	0.10	
15364.00	90.030	269.870	6089.74	9856.18	82.07	-9855.85	40°22'32.476"N	104°15'25.299"W	0.62	
15455.00	89.170	271.540	6090.38	9947.17	83.19	-9946.83	40°22'32.487"N	104°15'26.475"W	2.06	
15546.00	88.830	272.340	6091.97	10038.13	86.27	-10037.77	40°22'32.517"N	104°15'27.650"W	0.96	
15635.00	88.980	271.980	6093.67	10127.08	89.62	-10126.69	40°22'32.550"N	104°15'28.799"W	0.44	
15725.00	88.830	270.720	6095.39	10217.05	91.74	-10216.64	40°22'32.571"N	104°15'29.961"W	1.41	
15813.00	90.250	272.230	6096.09	10305.03	94.01	-10304.61	40°22'32.593"N	104°15'31.097"W	2.36	
15903.00	90.310	271.730	6095.65	10395.00	97.12	-10394.55	40°22'32.623"N	104°15'32.260"W	0.56	
15995.00	90.310	271.090	6095.16	10486.99	99.38	-10486.52	40°22'32.645"N	104°15'33.448"W	0.70	
16084.00	90.340	271.950	6094.65	10575.98	101.74	-10575.49	40°22'32.668"N	104°15'34.597"W	0.97	
16162.00	90.180	272.730	6094.30	10653.94	104.93	-10653.42	40°22'32.699"N	104°15'35.604"W	1.02	BHI LAST MWD SURVEY
16187.00	90.180	272.730	6094.22	10678.92	106.12	-10678.39	40°22'32.711"N	104°15'35.927"W	0.00	PROJECTION TO BIT (1169'FNL & 466'FWL, SEC.30, NWNW, LOT 1, 40.375754. -104.259980)



Actual Wellpath Report

STATE PRONGHORN V-29-30XRLNB AWP

Page 8 of 9



REFERENCE WELLPATH IDENTIFICATION

Operator	BONANZA CREEK OIL COMPANY	Slot	SLOT#12 STATE PRONGHORN V-29-30XRLNB (1338'FNL & 547'FWL, SEC.28)
Area	COLORADO	Well	STATE PRONGHORN V-29-30XRLNB
Field	WELD COUNTY	Wellbore	STATE PRONGHORN V-29-30XRLNB AWB
Facility	SEC.28-T05N-R61W		

TARGETS

Name	TVD [ft]	North [ft]	East [ft]	Grid East [US ft]	Grid North [US ft]	Latitude	Longitude	Shape
SEC.29-T05N-R61W	0.00	19.85	0.42	3356149.23	1382210.53	40°22'31.881"N	104°13'17.949"W	polygon
SEC.30-T05N-R61W	0.00	19.85	0.42	3356149.23	1382210.53	40°22'31.881"N	104°13'17.949"W	polygon
SEC.28-T05N-R61W	22.80	-2717.03	-191.16	3355997.14	1379471.29	40°22'04.836"N	104°13'20.424"W	polygon
SEC.29-T05N-R61W (460'FEL SETBACK)	6074.00	19.85	0.42	3356149.23	1382210.53	40°22'31.881"N	104°13'17.949"W	polygon
SEC.30-T05N-R61W (460'FWL SETBACK)	6074.00	19.85	0.42	3356149.23	1382210.53	40°22'31.881"N	104°13'17.949"W	polygon
STATE PRONGHORN V-29-30XRLNB LP REV-1 (1188'FNL & 460'FEL, SEC.29)	6074.00	144.84	-1007.90	3355139.26	1382320.96	40°22'33.116"N	104°13'30.977"W	point
STATE PRONGHORN V-29-30XRLNB BHL REV-1 (1170'FNL & 470'FWL, SEC.30)	6089.00	105.14	-10675.29	3345473.86	1382141.91	40°22'32.701"N	104°15'35.887"W	point
STATE PRONGHORN V-29-30XRLNB LP REV-2 (1188'FNL & 460'FEL, SEC.29)	6089.00	144.84	-1007.90	3355139.26	1382320.96	40°22'33.116"N	104°13'30.977"W	point
STATE PRONGHORN V-29-30XRLNB MID LATERAL REV-1 (1134'FNL & 0'FWL, SEC.29)	6089.00	50.60	-5855.61	3350293.62	1382156.86	40°22'32.178"N	104°14'33.613"W	point

WELLPATH COMPOSITION - Ref Wellbore: STATE PRONGHORN V-29-30XRLNB AWB Ref Wellpath: STATE PRONGHORN V-29-30XRLNB AWP

Start MD [ft]	End MD [ft]	Positional Uncertainty Model	Log Name/Comment	Wellbore
17.00	1562.00	Custom BHI NaviTrak (Standard Rotating) (Rockies 0.03Gt model)	13.5" HOLE BHI NAVITRAK +SR+ROCKIES <134-1562>	STATE PRONGHORN V-29-30XRLNB AWB
1562.00	16162.00	Custom BHI AutoTrak Curve (Short) (Rockies 0.03Gt model)	BHI ATCURVE +SHORT+ROCKIES <1683-16162>	STATE PRONGHORN V-29-30XRLNB AWB
16162.00	16187.00	Blind Drilling (std)	Projection to bit	STATE PRONGHORN V-29-30XRLNB AWB



Actual Wellpath Report
STATE PRONGHORN V-29-30XRLNB AWP
Page 9 of 9



REFERENCE WELLPATH IDENTIFICATION			
Operator	BONANZA CREEK OIL COMPANY	Slot	SLOT#12 STATE PRONGHORN V-29-30XRLNB (1338'FNL & 547'FWL, SEC.28)
Area	COLORADO	Well	STATE PRONGHORN V-29-30XRLNB
Field	WELD COUNTY	Wellbore	STATE PRONGHORN V-29-30XRLNB AWP
Facility	SEC.28-T05N-R61W		

WELLPATH COMMENTS				
MD [ft]	Inclination [°]	Azimuth [°]	TVD [ft]	Comment
134.00	0.690	328.030	134.00	FIRST BHI MWD SURVEY
6491.00	90.290	266.897	6085.39	TOP OF PRODUCTION (1188'FNL & 456'FEL, SEC.29, NENE, 40.375873, -104.225250)
16162.00	90.180	272.730	6094.30	BHI LAST MWD SURVEY
16187.00	90.180	272.730	6094.22	PROJECTION TO BIT (1169'FNL & 466'FWL, SEC.30, NWNW, LOT 1, 40.375754, -104.259980)