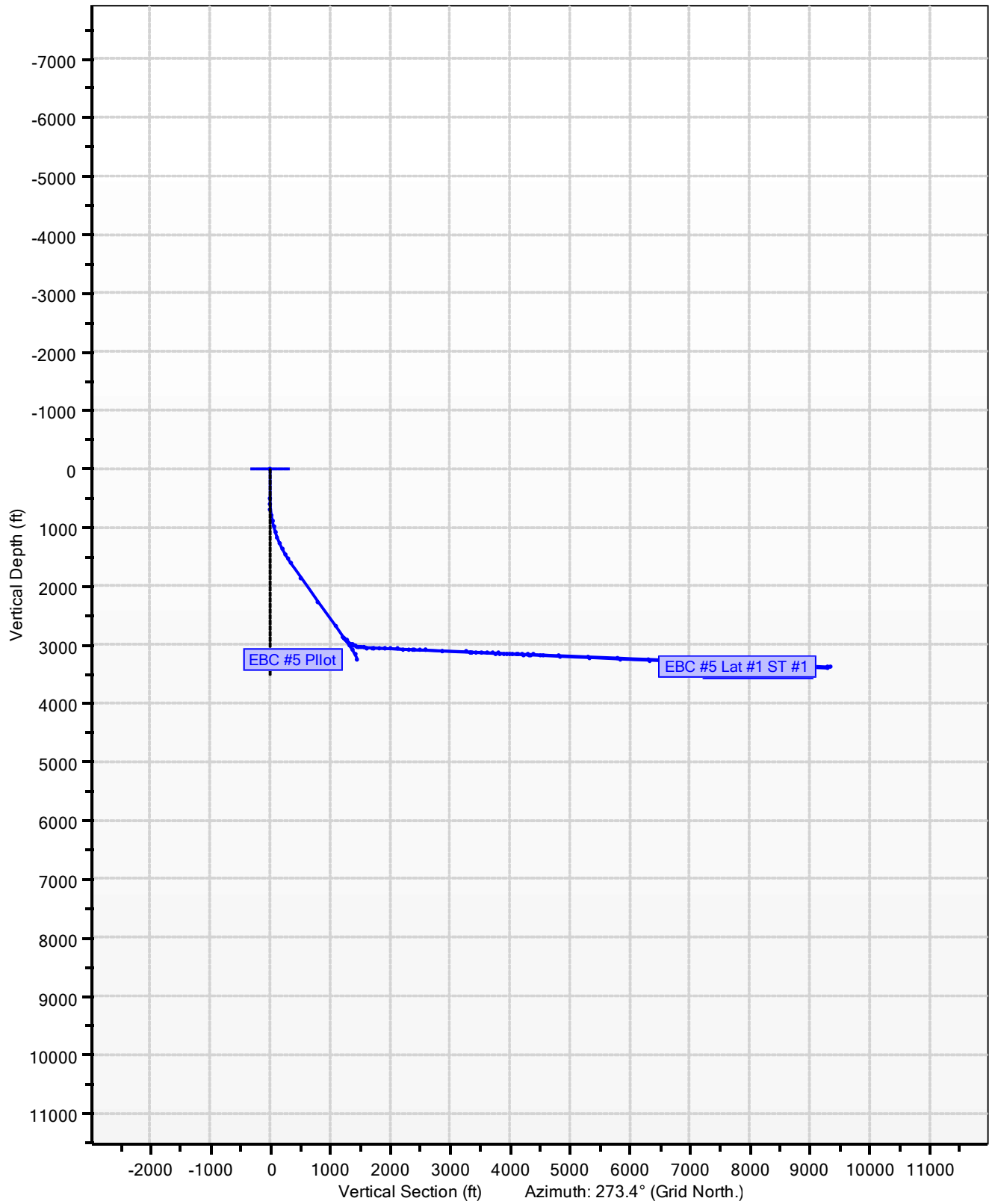


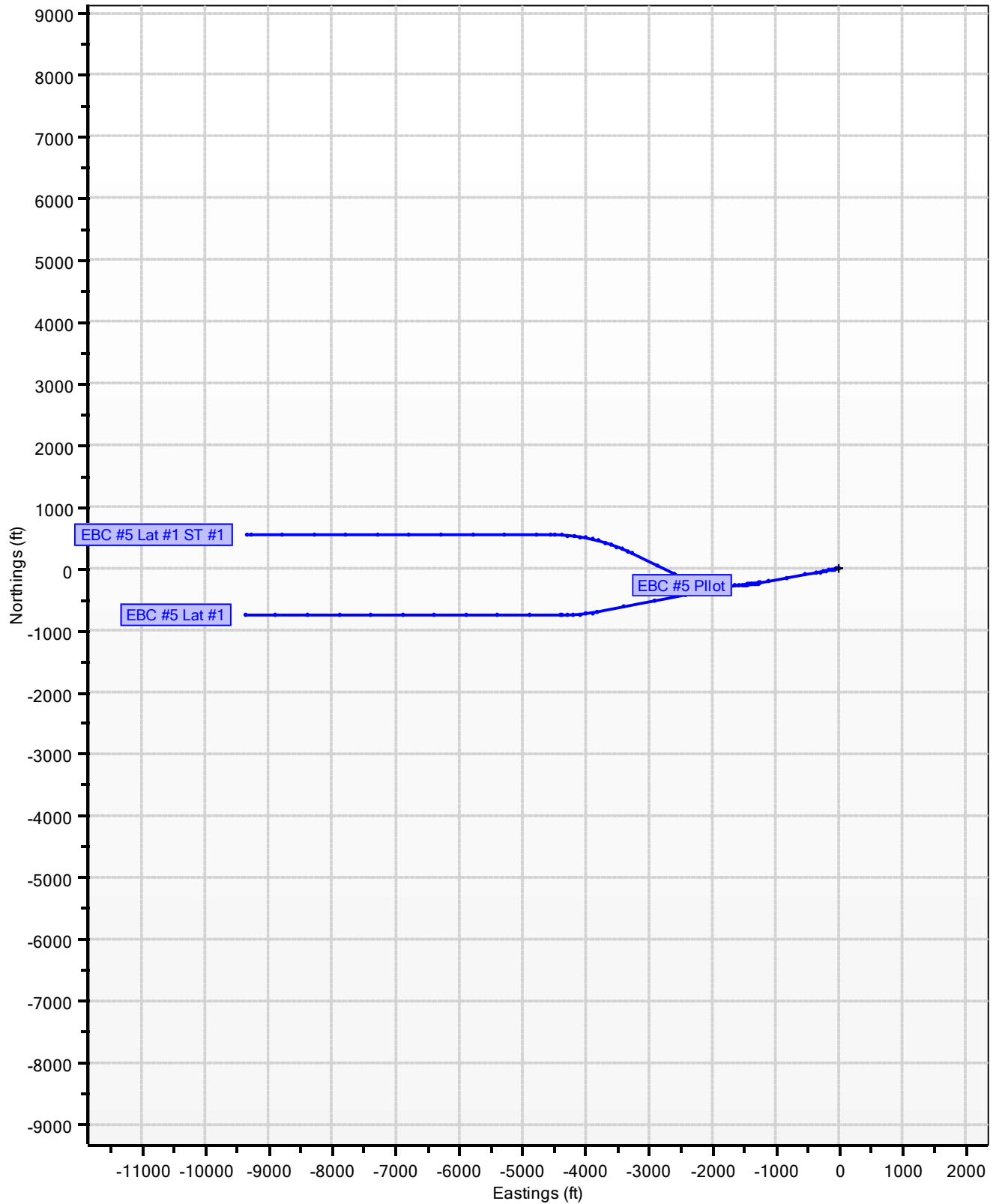
**East Bull Creek Well
EBC Pad 3
EBC #5
EBC #5 Pilot**

**Catamount Energy Partners
Proposal Report**

EBC Pad 3, EBC #5



EBC Pad 3, EBC #5



Catamount Energy Partners

Proposal Report



Database:	San Juan Basin	Local Coordinate Reference:	EBC #5
Company:		TVD Reference:	EBC #5
Project:	East Bull Creek Well	MD Reference:	EBC #5
Site:	EBC Pad 3	North reference:	Grid North
Well:	EBC #5	Survey Calculation Method:	Minimum Curvature
Wellbore:			
Proposal:	EBC #5 Pilot		

Project	East Bull Creek Well		
Map System:	HPGN Colorado State Planes	System Datum:	Mean Sea Level
Geo Datum:	High Precision GPS Network (aka HARN, NAD83/9)		
Map Zone:	Southern Zone		

Site	EBC Pad 3		
Site Position:		Northing:	0
From:	Map	Easting:	0
Position Uncertainty:	6946ft	Slot Radius:	0in
		Latitude:	33.48902771° N
		Longitude:	115.33027986° W
		Grid Convergence:	-6.0°

Well	EBC #5					
Well Position:	+N/-S	1187929ft	Northing:	+1187929	Latitude:	37.16729125° N
	+E/-W	2445884ft	Easting:	+2445884	Longitude:	107.40172813° W
Position Uncertainty:		1ft	Wellhead Elevation:	6946ft	Ground Level:	6930ft

Magnetics	Model Name	Sample Date	Declination (°)	Dip Angle (°)	Field Strength (nT)
	User Defined	2/9/2018	0.0	0.0	0.0

Proposal	EBC #5 Pilot		
Audit Notes:			
Version:		Phase:	
		Tie On Depth:	0ft

Vertical Section:	Depth from TVD (ft)	+N/-S (ft)	+E/-W (ft)	Direction (°)
	0	0	0	259.5

Plan Sections											
Measured Depth (ft)	Inclination (°)	Azimuth (°)	Vertical Depth (ft)	+N/-S (ft)	+E/-W (ft)	Dogleg Rate (°/100ft)	Build Rate (°/100ft)	Turn Rate (°/100ft)	TFO (°)	Target	
0	0.0	0.0	0	0	0						
500	0.0	0.0	500	0	0	0.0	0.0	0.0	0.0		
1686	35.6	259.5	1611	-65	-350	3.0	3.0	0.0	-100.5		
3425	35.6	259.5	3026	-250	-1345	0.0	0.0	0.0	0.0	EBC 5 Pilot Top Coal	
3686	24.8	259.5	3251	-274	-1474	4.1	-4.1	0.0	180.0	EBC 5 Lat 1 ST 1 BHL	

Planned Survey											
Measured Depth (ft)	Incl. (°)	Az. (°)	Vertical Depth (ft)	Sub Sea Depth (ft)	+N/-S (ft)	+E/-W (ft)	Vertical Section (ft)	Closure Distance (ft)	Closure Azimuth (°)	Dogleg Rate (°/100ft)	Comments/Formations
0	0.0	0.0	0	-6946	0	0	0	0	0.0	0.0	
16	0.0	0.0	16	-6930	0	0	0	0	0.0	0.0	Animas
100	0.0	0.0	100	-6846	0	0	0	0	0.0	0.0	
200	0.0	0.0	200	-6746	0	0	0	0	0.0	0.0	
300	0.0	0.0	300	-6646	0	0	0	0	0.0	0.0	
400	0.0	0.0	400	-6546	0	0	0	0	0.0	0.0	
500	0.0	0.0	500	-6446	0	0	0	0	0.0	0.0	
510	0.3	259.5	510	-6436	0	0	0	0	259.5	3.0	
540	1.2	259.5	540	-6406	0	0	0	0	259.5	3.0	
570	2.1	259.5	570	-6376	0	-1	1	1	259.5	3.0	

Catamount Energy Partners

Proposal Report



Database:	San Juan Basin	Local Coordinate Reference:	EBC #5
Company:		TVD Reference:	EBC #5
Project:	East Bull Creek Well	MD Reference:	EBC #5
Site:	EBC Pad 3	North reference:	Grid North
Well:	EBC #5	Survey Calculation Method:	Minimum Curvature
Wellbore:			
Proposal:	EBC #5 Pilot		

Planned Survey											
Measured Depth (ft)	Incl. (°)	Az. (°)	Vertical Depth (ft)	Sub Sea Depth (ft)	+N/-S (ft)	+E/-W (ft)	Vertical Section (ft)	Closure Distance (ft)	Closure Azimuth (°)	Dogleg Rate (°/100ft)	Comments/Formations
600	3.0	259.5	600	-6346	0	-3	3	3	259.5	3.0	
630	3.9	259.5	630	-6316	-1	-4	4	4	259.5	3.0	
660	4.8	259.5	660	-6286	-1	-7	7	7	259.5	3.0	
690	5.7	259.5	690	-6256	-2	-9	9	9	259.5	3.0	
720	6.6	259.5	720	-6226	-2	-12	13	13	259.5	3.0	
750	7.5	259.5	749	-6197	-3	-16	16	16	259.5	3.0	
780	8.4	259.5	779	-6167	-4	-20	20	20	259.5	3.0	
810	9.3	259.5	809	-6137	-5	-25	25	25	259.5	3.0	
840	10.2	259.5	838	-6108	-6	-30	30	30	259.5	3.0	
870	11.1	259.5	868	-6078	-7	-35	36	36	259.5	3.0	
900	12.0	259.5	897	-6049	-8	-41	42	42	259.5	3.0	
930	12.9	259.5	926	-6020	-9	-47	48	48	259.5	3.0	
960	13.8	259.5	956	-5990	-10	-54	55	55	259.5	3.0	
990	14.7	259.5	985	-5961	-11	-61	63	63	259.5	3.0	
1020	15.6	259.5	1014	-5932	-13	-69	70	70	259.5	3.0	
1050	16.5	259.5	1042	-5904	-14	-77	79	79	259.5	3.0	
1080	17.4	259.5	1071	-5875	-16	-86	87	87	259.5	3.0	
1110	18.3	259.5	1100	-5846	-18	-95	97	97	259.5	3.0	
1140	19.2	259.5	1128	-5818	-19	-104	106	106	259.5	3.0	
1170	20.1	259.5	1156	-5790	-21	-114	116	116	259.5	3.0	
1200	21.0	259.5	1184	-5762	-23	-125	127	127	259.5	3.0	
1230	21.9	259.5	1212	-5734	-25	-136	138	138	259.5	3.0	
1260	22.8	259.5	1240	-5706	-27	-147	149	149	259.5	3.0	
1290	23.7	259.5	1268	-5678	-29	-158	161	161	259.5	3.0	
1320	24.6	259.5	1295	-5651	-32	-170	173	173	259.5	3.0	
1350	25.5	259.5	1322	-5624	-34	-183	186	186	259.5	3.0	
1380	26.4	259.5	1349	-5597	-36	-196	199	199	259.5	3.0	
1410	27.3	259.5	1376	-5570	-39	-209	213	213	259.5	3.0	
1440	28.2	259.5	1403	-5543	-41	-223	227	227	259.5	3.0	
1470	29.1	259.5	1429	-5517	-44	-237	241	241	259.5	3.0	
1500	30.0	259.5	1455	-5491	-47	-252	256	256	259.5	3.0	
1530	30.9	259.5	1481	-5465	-50	-267	271	271	259.5	3.0	
1560	31.8	259.5	1506	-5440	-52	-282	287	287	259.5	3.0	
1590	32.7	259.5	1532	-5414	-55	-298	303	303	259.5	3.0	
1620	33.6	259.5	1557	-5389	-58	-314	319	319	259.5	3.0	
1650	34.5	259.5	1582	-5364	-61	-330	336	336	259.5	3.0	
1680	35.4	259.5	1606	-5340	-65	-347	353	353	259.5	3.0	
1686	35.6	259.5	1611	-5335	-65	-350	356	356	259.5	3.0	
1700	35.6	259.5	1623	-5323	-67	-359	365	365	259.5	0.0	
1800	35.6	259.5	1704	-5242	-77	-416	423	423	259.5	0.0	
1900	35.6	259.5	1785	-5161	-88	-473	481	481	259.5	0.0	
2000	35.6	259.5	1867	-5079	-99	-530	539	539	259.5	0.0	
2100	35.6	259.5	1948	-4998	-109	-587	597	597	259.5	0.0	
2200	35.6	259.5	2029	-4917	-120	-645	656	656	259.5	0.0	
2300	35.6	259.5	2111	-4835	-130	-702	714	714	259.5	0.0	
2400	35.6	259.5	2192	-4754	-141	-759	772	772	259.5	0.0	
2500	35.6	259.5	2273	-4673	-152	-816	830	830	259.5	0.0	
2600	35.6	259.5	2355	-4591	-162	-873	888	888	259.5	0.0	
2626	35.6	259.5	2376	-4570	-165	-888	904	904	259.5	0.0	Kirtland
2700	35.6	259.5	2436	-4510	-173	-930	946	946	259.5	0.0	

Catamount Energy Partners

Proposal Report



Database:	San Juan Basin	Local Coordinate Reference:	EBC #5
Company:		TVD Reference:	EBC #5
Project:	East Bull Creek Well	MD Reference:	EBC #5
Site:	EBC Pad 3	North reference:	Grid North
Well:	EBC #5	Survey Calculation Method:	Minimum Curvature
Wellbore:			
Proposal:	EBC #5 Pilot		

Planned Survey											
Measured Depth (ft)	Incl. (°)	Az. (°)	Vertical Depth (ft)	Sub Sea Depth (ft)	+N/-S (ft)	+E/-W (ft)	Vertical Section (ft)	Closure Distance (ft)	Closure Azimuth (°)	Dogleg Rate (°/100ft)	Comments/Formations
2738	35.6	259.5	2467	-4479	-177	-952	969	969	259.5	0.0	Farmington
2800	35.6	259.5	2517	-4429	-184	-988	1005	1005	259.5	0.0	
2900	35.6	259.5	2599	-4347	-194	-1045	1063	1063	259.5	0.0	
3000	35.6	259.5	2680	-4266	-205	-1102	1121	1121	259.5	0.0	
3085	35.6	259.5	2749	-4197	-214	-1151	1170	1170	259.5	0.0	Lower Kirtland
3100	35.6	259.5	2761	-4185	-216	-1159	1179	1179	259.5	0.0	
3200	35.6	259.5	2843	-4103	-226	-1216	1237	1237	259.5	0.0	
3300	35.6	259.5	2924	-4022	-237	-1274	1295	1295	259.5	0.0	
3400	35.6	259.5	3005	-3941	-247	-1331	1354	1354	259.5	0.0	
3425	35.6	259.5	3026	-3920	-250	-1345	1368	1368	259.5	0.0	Fruitland EBC 5 Pilot Top Coal
3450	34.6	259.5	3046	-3900	-253	-1359	1383	1383	259.5	4.1	
3480	33.3	259.5	3071	-3875	-256	-1376	1399	1399	259.5	4.1	
3510	32.1	259.5	3096	-3850	-259	-1392	1416	1416	259.5	4.1	
3526	31.4	259.5	3110	-3836	-260	-1400	1424	1424	259.5	4.1	Pictured Cliffs
3540	30.8	259.5	3122	-3824	-262	-1407	1431	1431	259.5	4.1	
3570	29.6	259.5	3148	-3798	-264	-1422	1446	1446	259.5	4.1	
3600	28.3	259.5	3174	-3772	-267	-1436	1461	1461	259.5	4.1	
3630	27.1	259.5	3201	-3745	-270	-1450	1475	1475	259.5	4.1	
3660	25.9	259.5	3227	-3719	-272	-1463	1488	1488	259.5	4.1	
3686	24.8	259.5	3251	-3695	-274	-1474	1499	1499	259.5	4.1	EBC 5 Lat 1 BHL EBC 5 Lat 1 ST 1 BHL

Targets										
Target Name -hit/miss target -Shape	Dip Angle (°)	Dip Dir. (°)	TVD (ft)	+N/-S (ft)	+E/-W (ft)	Northing (ft)	Easting (ft)	Latitude	Longitude	
EBC 5 Lat 1 BHL - proposal misses the target center by 7902ft at 3686ft MD (3251TVD, -274, -1474) - Point			3406	-754	-9360	+1187175	+2436524	37.16469370° N	107.43378740° W	
EBC 5 Lat 1 ST 1 BHL - proposal misses the target center by 7908ft at 3686ft MD (3251TVD, -274, -1474) - Point			3386	547	-9338	+1188476	+2436546	37.16826673° N	107.43380595° W	
EBC 5 Pilot Top Coal - proposal hits the target center - Point			3026	-250	-1345	+1187679	+2444539	37.16652920° N	107.40632660° W	

Formations						
Measured Depth (ft)	Vertical Depth (ft)	Subsea Depth (ft)	Name	Dip Angle (°)	Dip Direction (°)	
16	16	-6930	Animas	0.0	0.0	
2626	2376	-4570	Kirtland	0.0	0.0	
2738	2467	-4479	Farmington	0.0	0.0	
3085	2749	-4197	Lower Kirtland	0.0	0.0	
3425	3026	-3920	Fruitland	0.0	0.0	
3526	3110	-3836	Pictured Cliffs	0.0	0.0	

Catamount Energy Partners

Proposal Report



Database:	San Juan Basin	Local Coordinate Reference:	EBC #5
Company:		TVD Reference:	EBC #5
Project:	East Bull Creek Well	MD Reference:	EBC #5
Site:	EBC Pad 3	North reference:	Grid North
Well:	EBC #5	Survey Calculation Method:	Minimum Curvature
Wellbore:			
Proposal:	EBC #5 Pilot		

Checked By:	Approved By:	Date:
-------------	--------------	-------

Disclaimer Notice

Catamount Energy Partners makes no warranty of any kind with respect to the subject matter included herein or the completeness or accuracy of this document.

Catamount Energy Partners are not responsible for any actions (or lack thereof) taken as a result of relying on or in any way using information contained in this document and in no event shall be liable for any damages resulting from reliance on or use of this information.