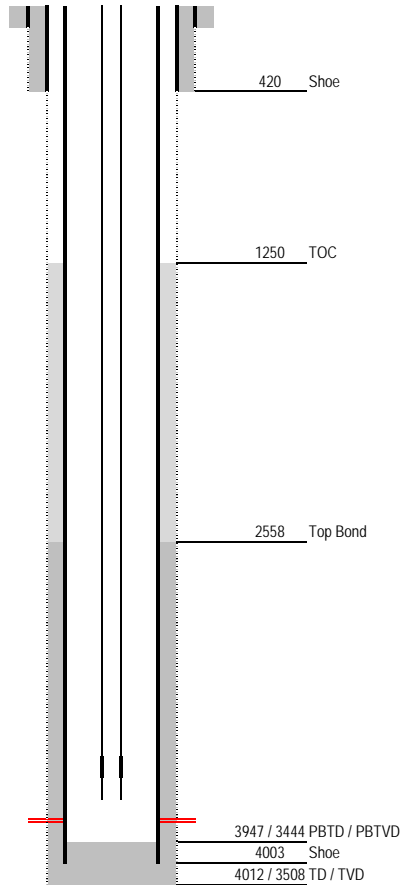


Laramie Energy

Current Wellbore Diagram

Not to Scale

Geological Tops	Depth
Cameo	3193
Rollins	3330
Cozzette	3604
Corcoran	3840



Well Name Horseshoe Canyon 3-17
API 05-077-08720-00
Surface Location 1807 FNL & 1247 FEL NESE S17 T09S R97W
GPS Coordinates NA
Bottom Hole Loc NA
Field Shire Gulch #77450
County, State Mesa, CO
Spud Date 3/14/2001
Completion Date 5/26/2001
Diagram Date 5/7/2018
KB Elevation 5434
KB 10
GL Elevation 5424

Hole	NA
Conductor	NA
Cement	NA

Surface Hole	12.75"
Casing	8.625" 24# J55 STC @ 420
Cement	170 sx
TOC	SURFACE (calc)

Production Hole	7.875" @ 4012
Casing	5.5" 15.5# J55 @ 4003
Cement	Lead 355 sx 50/50/4 @ 12.5 ppg, 1.81 yield, Tail 125 sx 50/50/2 @ 14.2 ppg, 1.27 yield
Top Good Bond	2558
TOC	1250 CBL dated 04/10/01

Tubing	New 2-3/8" tbg estimated @ 3825
--------	---------------------------------

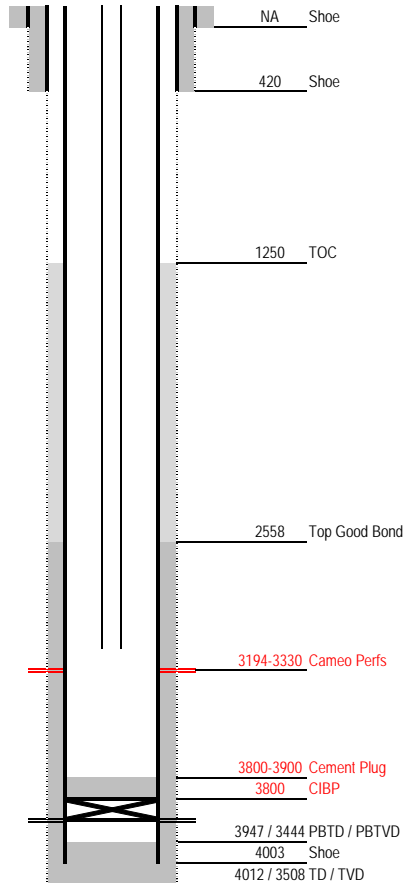
Perforations	Top	Bottom	Holes	Date
Corcoran	3842	3885	28	5/25/2001

Laramie Energy

Proposed Cameo Coal Recompletion Wellbore Diagram

Not to Scale

Geological Tops	Depth
Cameo	3193
Rollins	3330
Cozzette	3604
Corcoran	3840



Well Name Horseshoe Canyon 3-17
API 05-077-08720-00
Surface Location 1807 FNL & 1247 FEL NESE S17 T09S R97W
GPS Coordinates NA
Bottom Hole Loc NA
Field Shire Gulch #77450
County, State Mesa, CO
Spud Date 3/14/2001
Completion Date 5/26/2001
Diagram Date 5/7/2018
KB Elevation 5434
KB 10
GL Elevation 5424

Hole	NA
Conductor	NA
Cement	NA

Surface Hole	12.75"
Casing	8.625" 24# J55 STC @ 420
Cement	170 sx
TOC	SURFACE (calc)

Production Hole	7.875" @ 4012
Casing	5.5" 15.5# J55 @ 4003
Cement	Lead 355 sx 50/50/4 @ 12.5 ppg, 1.81 yield, Tail 125 sx 50/50/2 @ 14.2 ppg, 1.27 yield
Top Good Bond	2558
TOC	1250 CBL dated 04/10/01

Tubing	2-3/8" tbq @ 3175
---------------	-------------------

Perforations	Top	Bottom	Holes	Date
Corcoran	3842	3885	28	5/25/2001