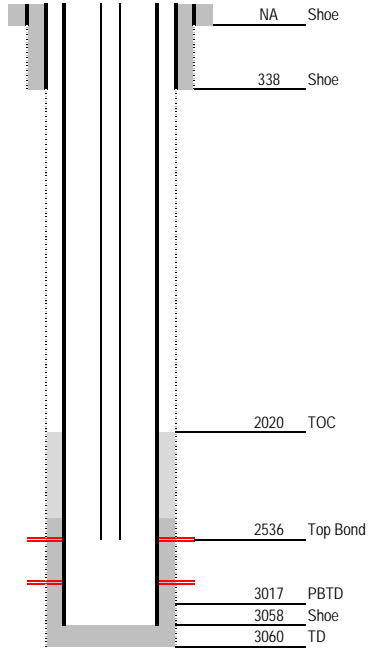


# Laramie Energy

## Current Wellbore Diagram

Not to Scale

Geological Tops	Depth
Rollins	2296
Cozzette	2516
Corcoran	2712
Mancos	2990



**Well Name** Horseshoe Canyon 2  
**API** 05-077-08233-00  
**Surface Location** 1504 FNL & 1793 FEL SWNE S29 T09S R97W  
**GPS Coordinates** 39.247571 -108.239138  
**Bottom Hole Loc** NA  
**Field** Shire Gulch #77450  
**County, State** Mesa, CO #077  
**Spud Date** 3/11/1980  
**Completion Date** 5/26/1980  
**Diagram Date** 5/17/2018  
**KB Elevation** 5391  
**KB** 9  
**GL Elevation** 5382

Hole	NA
Conductor	NA
Cement	NA

<b>Surface Hole</b>	12.25" @ 350
Casing	8.625" 24# @ 338
Cement	200 sx
TOC	SURFACE (calc)

<b>Production Hole</b>	7.875" @ 3060
Casing	4.5" 10.5# @ 3058
Cement	300 sx
TOC	2020
Top Good Bond	2536
CBL Date	4/18/1980

<b>Tubing</b>	Unknown
---------------	---------

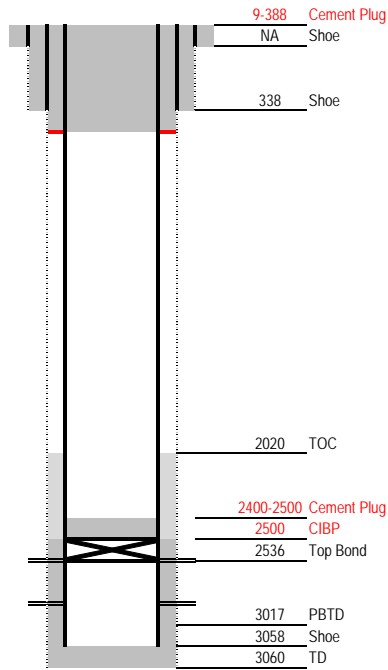
Perforations	Top	Bottom	Holes	Date
Cozzette	2545	2578		
Corcoran	2757	2786		

# Laramie Energy

## Proposed P&A Wellbore Diagram

Not to Scale

Geological Tops	Depth
Rollins	2296
Cozzette	2516
Corcoran	2712
Mancos	2990



Well Name Horseshoe Canyon 2  
 API 05-077-08233-00  
 Surface Location 1504 FNL & 1793 FEL SWNE S29 T09S R97W  
 GPS Coordinates 39.247571 -108.239138  
 Bottom Hole Loc NA  
 Field Shire Gulch #77450  
 County, State Mesa, CO #077  
 Spud Date 3/11/1980  
 Completion Date 5/26/1980  
 Diagram Date 5/17/2018  
 KB Elevation 5391  
 KB 9  
 GL Elevation 5382

Hole	NA
Conductor	NA
Cement	NA

Surface Hole	12.25" @ 350
Casing	8.625" 24# @ 338
Cement	200 sx
TOC	SURFACE (calc)

Production Hole	7.875" @ 3060
Casing	4.5" 10.5# @ 3058
Cement	300 sx
TOC	2020
Top Good Bond	2536
CBL Date	4/18/1980

Tubing	Unknown
--------	---------

Perforations	Top	Bottom	Holes	Date
Cozzette	2545	2578		
Corcoran	2757	2786		