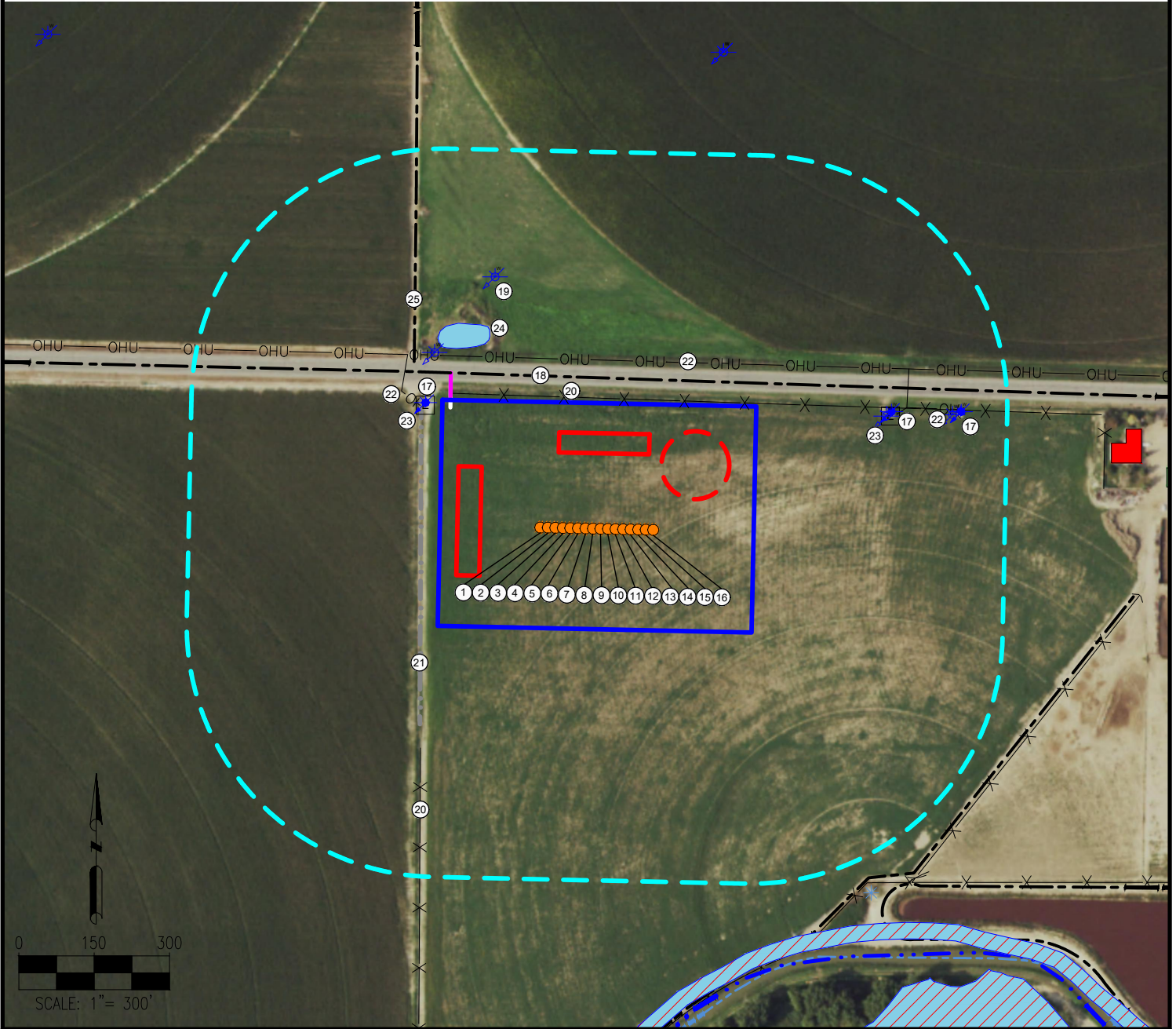


EAST AULT 18-C PAD LOCATION DRAWING



- | | | | |
|-------------------------|--------------------------|---|--|
| 1. EAST AULT M-18-19HN | 8. EAST AULT R-18-19HN | 15. EAST AULT W-18-19HC | 22. OVERHEAD UTILITIES ARE ±336' N, ±423' NW, ±647' NE |
| 2. EAST AULT NA-18-19HN | 9. EAST AULT S-18-19HN | 16. EAST AULT X-18-19HN | 23. ELECTRIC BOXES ARE ±415' NW, ±633' NE |
| 3. EAST AULT N-18-19HC | 10. EAST AULT TA-18-19HN | 17. WATER WELLS (Field Verified) are ±417' NW, ±639' NE, ±769' NE | 24. POND IS ±426' NW |
| 4. EAST AULT O-18-19HN | 11. EAST AULT T-18-19HC | 18. HIGHWAY 14 IS ±288' N | 25. PRIVATE ROAD IS ±487' NW |
| 5. EAST AULT P-18-19HN | 12. EAST AULT U-18-19HN | 19. WATER WELL IS ±538' NW | |
| 6. EAST AULT QA-18-19HN | 13. EAST AULT V-18-19HN | 20. FENCES ARE ±260' N, ±555' SW | |
| 7. EAST AULT Q-18-19HC | 14. EAST AULT WA-18-19HN | 21. CONCRETE DITCH IS ±343' W | |

LEGEND: <ul style="list-style-type: none"> ● = PROPOSED WELL ✦ = WATER WELL E = ELECTRICAL BOX ✦ = PIVOT POINT = PROPOSED ACCESS ROAD = EXISTING ROAD = CANAL = FENCE = OVERHEAD UTILITY = CONCRETE DITCH = DISTURBANCE AREA = 500' RADIUS = WETLANDS = BUILDING UNIT = POND = PROPOSED FACILITY BERM 	MEASURED FROM NEAREST WELL OR FACILITY: BUILDING ±922' NE BUILDING UNIT ±922' NE PUBLIC ROAD (HIGHWAY 14) ±91' N PROPERTY LINE (CITY OF THORNTON) ±66' W UTILITY (POWERLINE) ±109' NW RAILROAD ±5280' W MEASURED FROM NEAREST EDGE OF DISTURBANCE: SURFACE WATER (CONCRETE DITCH) ±35' W MEASURED FROM NEAREST WELL OR FACILITY: WATER WELL ±34' W FIELD VERIFIED WATER WELL ±247' N SWL = 35' PERMIT: 1577-R-R RECEIPT: 3642227	REFERENCE LOCATION **EAST AULT R-18-19HN** LAT: 40.581674° N LONG: 104.704556° W ELEVATION: 4909' 300' FNL & 2262' FEL PDOP: 1.4 GPS OPERATOR: CHARLES SCOTT DISTURBANCE ACREAGE: 6.46 ACRES DRILLING OPERATIONS 3.23 ACRES INTERIM RECLAIM CURRENT SURFACE USE: IRRIGATED CROP FUTURE SURFACE USE: IRRIGATED CROP
--	--	--

DISCLAIMER:
THIS PLOT DOES NOT REPRESENT A MONUMENTED LAND SURVEY AND SHOULD NOT BE RELIED UPON TO DETERMINE BOUNDARY LINES, PROPERTY OWNERSHIP OR OTHER PROPERTY INTERESTS. PARCEL LINES, IF DEPICTED HAVE NOT BEEN FIELD VERIFIED AND MAY BE BASED UPON PUBLICLY AVAILABLE DATA THAT ALSO HAS NOT BEEN INDEPENDENTLY VERIFIED.

DATA SOURCE:
AERIAL IMAGERY: NAIP 2017
WATER WELLS: COLORADO DWR
NHD: USGS
PUBLICLY AVAILABLE DATA SOURCES HAVE NOT BEEN INDEPENDENTLY VERIFIED BY ASCENT.

7535 Hilltop Circle
Denver, CO 80221
(303) 928-7128
www.ascentgeomatics.com

FIELD DATE:
10-19-17
DRAWING DATE:
05-11-18
BY:
VQD
CHECKED:
MJW

SITE NAME:
EAST AULT 18-C PAD
SURFACE LOCATION:
**NW 1/4 NE 1/4 SEC. 18, T7N, R65W, 6TH P.M.
WELD COUNTY, COLORADO**

PREPARED FOR:
 BAYSWATER
EXPLORATION AND PRODUCTION, LLC