

| | | | | | | | | | | | | |
|---|---|-------|-----|------|----------------|---------|----------|---------|----------|------------------|------------------|-------|
| | | (in) | | (in) | | (ft) | (ft) | (ft) | (ft) | | | (h) |
| 1 | 1 | 8.500 | PDC | 6.00 | AutoTrak Curve | 2007.00 | 15809.00 | 2024.00 | 15822.00 | 2018-02-13 09:52 | 2018-02-17 10:16 | 86.55 |

Crew

| Name | Arrive Wellsite | Depart Wellsite | Name | Arrive Wellsite | Depart Wellsite | Name | Arrive Wellsite | Depart Wellsite |
|------------|-----------------|-----------------|------------------|-----------------|-----------------|------|-----------------|-----------------|
| Brent Cass | 2018-02-09 | 2018-02-18 | Marshall Easlick | 2018-02-12 | 2018-02-18 | | | |

Mud Properties Record

| Date / Time | Run No. | Measured Depth (ft) | Mud Type | Density (ppg) | Viscosity (cP) | pH | Fluid Loss (cm3) | Oil / Water | Source | Total Chlorides (ppm) | K+ (%) |
|------------------|---------|---------------------|---------------|---------------|----------------|-----|------------------|-------------|------------|-----------------------|--------|
| 2018-02-13 00:21 | 1 | 2007.00 | Oil Based Mud | 10.2 | 16 | N/A | 6.0 | 65.1/34.9 | Active Pit | 69000 | 0.00 |
| 2018-02-13 05:09 | 1 | 2024.00 | Oil Based Mud | 9.6 | 14 | N/A | 5.8 | 65.4/34.6 | Active Pit | 67000 | 0.00 |
| 2018-02-14 05:25 | 1 | 4217.43 | Oil Based Mud | 9.6 | 18 | N/A | 5.2 | 63.3/36.7 | Active Pit | 66000 | 0.00 |
| 2018-02-17 05:24 | 1 | 15154.43 | Oil Based Mud | 9.7 | 18 | N/A | 4.4 | 64.8/35.2 | Active Pit | 73000 | 0.00 |

Mud Resistivity Record

| Date / Time | Run No. | Measured Depth (ft) | Surface Temp (degF) | Surface | | | BHCT (degF) | Downhole | | |
|------------------|---------|---------------------|---------------------|------------|-------------|-------------|-------------|-------------------|--------------------|--------------------|
| | | | | Rm (ohm.m) | Rmf (ohm.m) | Rmc (ohm.m) | | Rm @ BHCT (ohm.m) | Rmf @ BHCT (ohm.m) | Rmc @ BHCT (ohm.m) |
| 2018-02-17 05:24 | 1 | 15156.70 | 162.0 | 100.000 | N/A | N/A | 239.2 | 100.000 | N/A | N/A |

Equipment and Service Data

| Run No. | Tool | Serial Number | Measurement | Sensor Offset (ft) | Bit Offset (ft) | Max O.D. (in) | Min I.D. (in) |
|---------|---------|---------------|----------------------|--------------------|-----------------|---------------|---------------|
| 1 | ATC_SU | 14262242 | Near Bit VSS | 5.93 | 6.93 | 7.000 | 4.330 |
| 1 | ATC_SU | 14262242 | Near Bit Inclination | 5.93 | 6.93 | 7.000 | 4.330 |
| 1 | ATC_MWD | 12706130 | Gamma (single) | 2.76 | 13.10 | 7.000 | 3.250 |
| 1 | ATC_MWD | 12706130 | Directional (mag) | 12.28 | 22.62 | 7.000 | 3.250 |

Service and Tool Mnemonics

| Mnemonic | Name | Description |
|----------|----------|-------------------------------|
| ATC_SU | ATC_SU | Auto Trak Curve Steering Unit |
| ATC_MWD | ATC_MWD | Auto Trak Curve MWD |
| ATC_LCPM | ATC_LCPM | Auto Trak Curve LCPM |

Comments

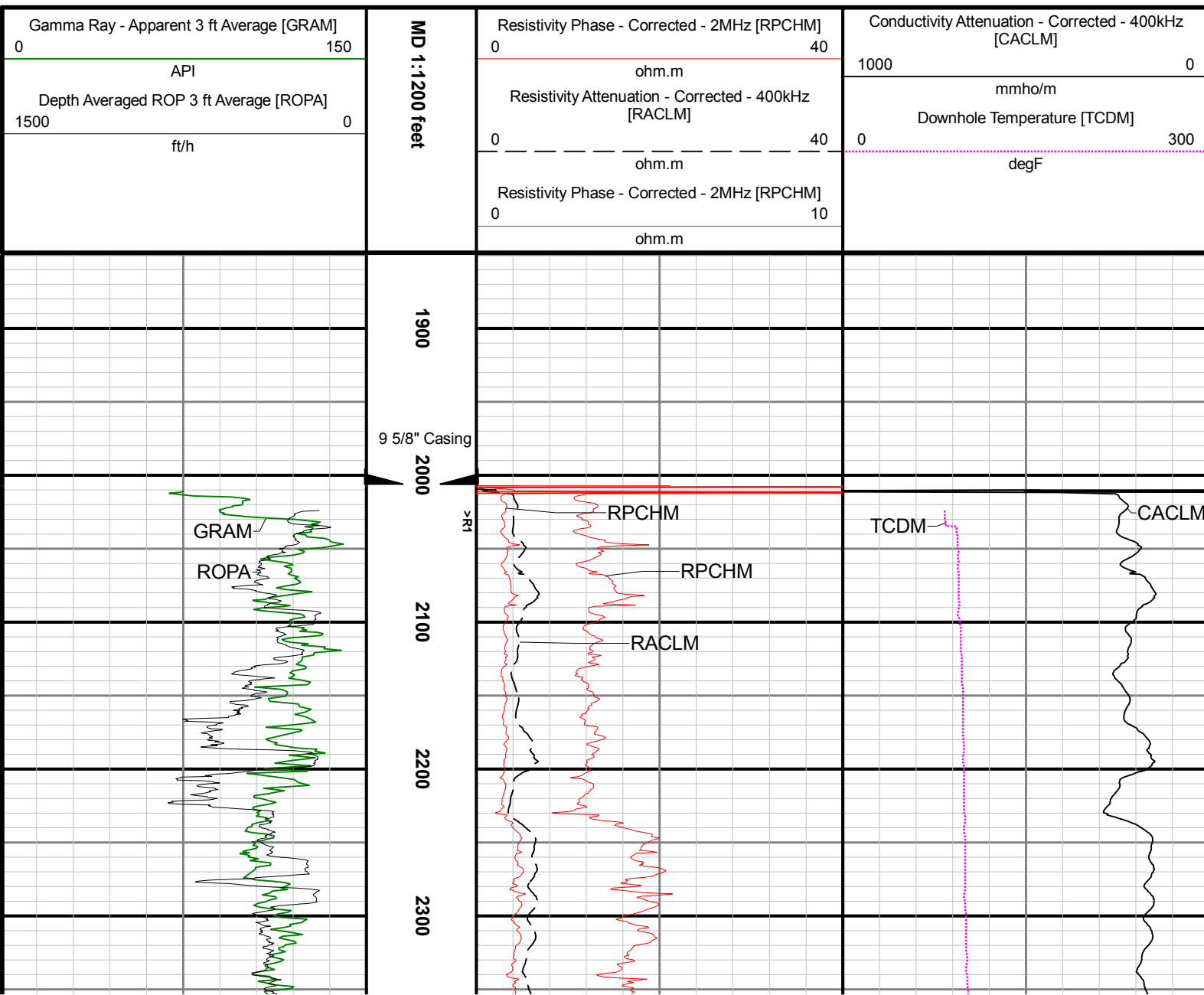
- Depth measurements were obtained from a depth control system not supplied or operated by Baker Hughes Drilling Services. Due to the lack of control by Baker Hughes logging engineers, depth calibrations and measurements could not be independently verified and the unverified depths as supplied to Baker Hughes are being used to present logging data.
- Baker Hughes LWD run 1 utilized a 6.75 inch Ontrak service (Gamma Ray and Multiple Propagation Resistivity) behind an 8.5 inch bit and rotary steerable assembly to perform a MAD (measurement after drilling) Pass from 2024 to 6816 feet MD (2024 to 6750 feet TVD). The data collected during this run was ream logged after being drilled and presented independent of the drilled log.
- Numerous gaps in Gamma Ray data are present throughout the log due to downlinking and surveying while drilling ahead.

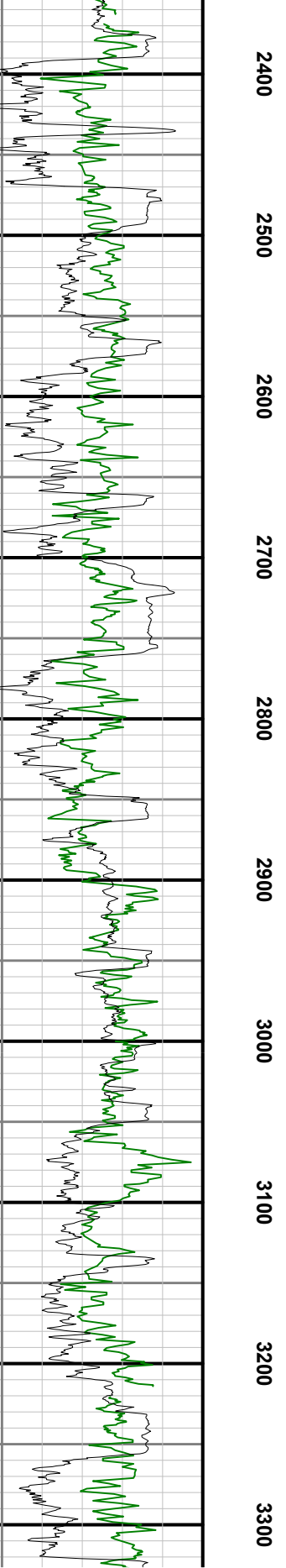
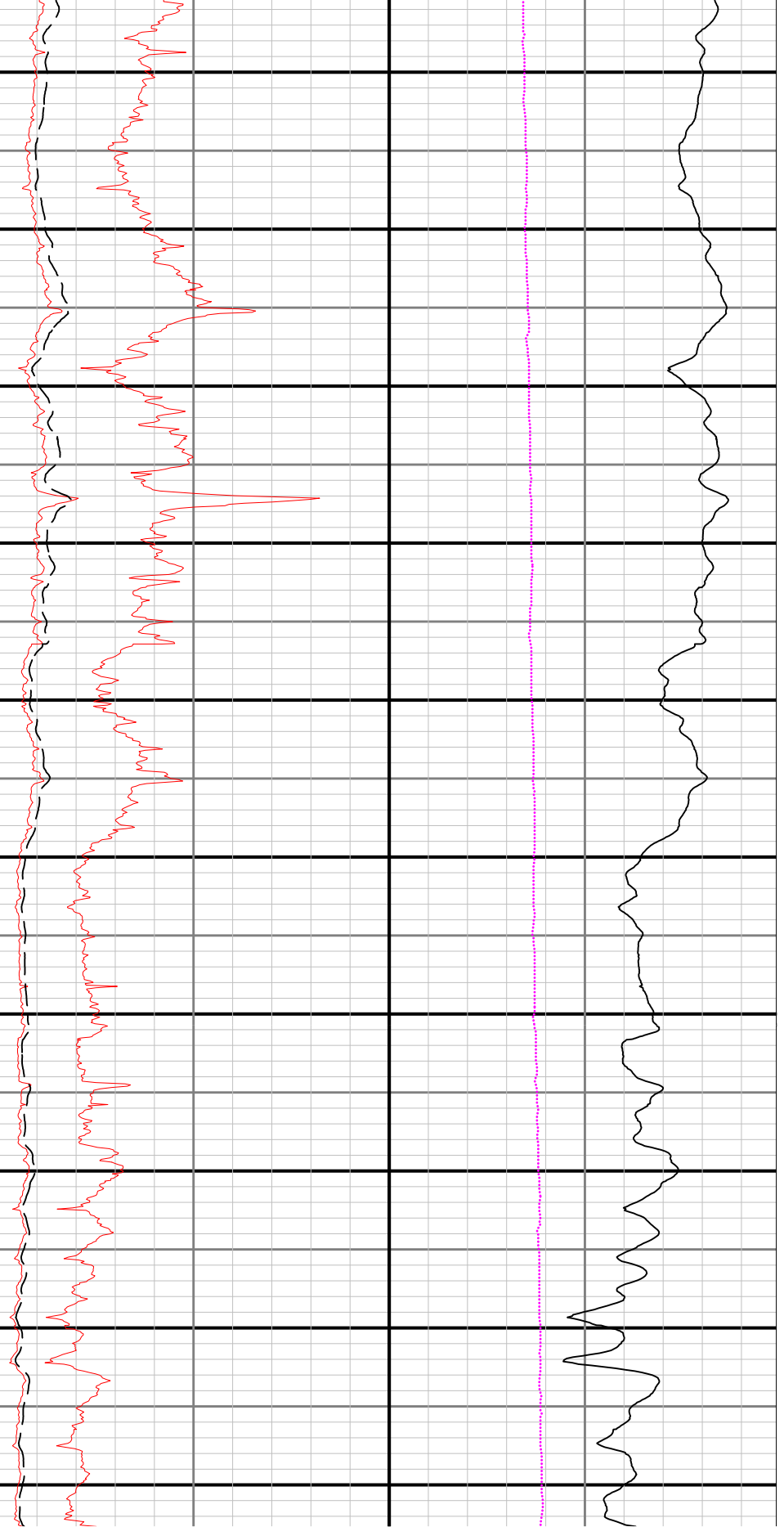
Remarks

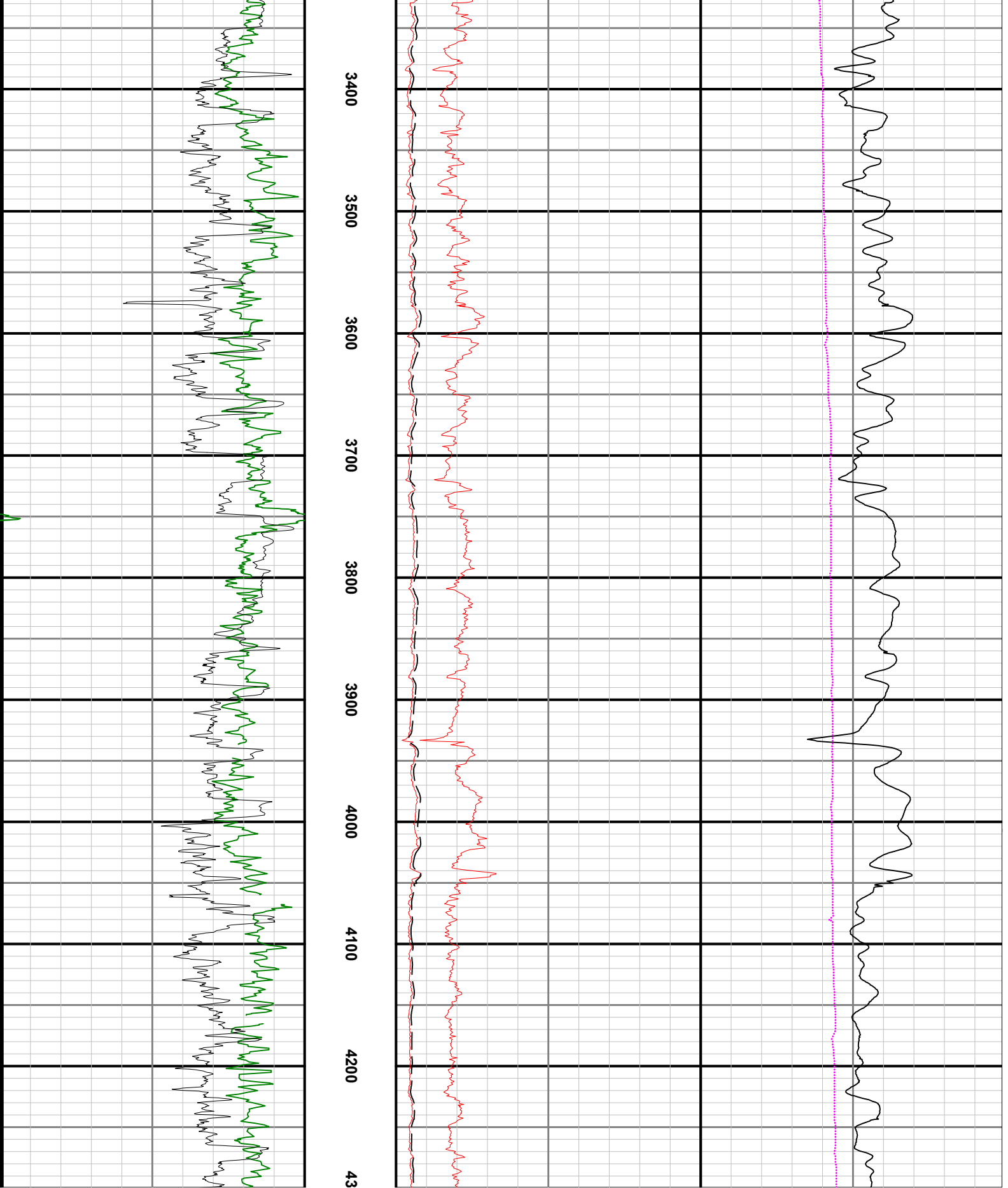
| Number | Measured Depth (ft) | Hole Section (in) | Run No. | Remark |
|--------|---------------------|-------------------|---------|--------|
|--------|---------------------|-------------------|---------|--------|

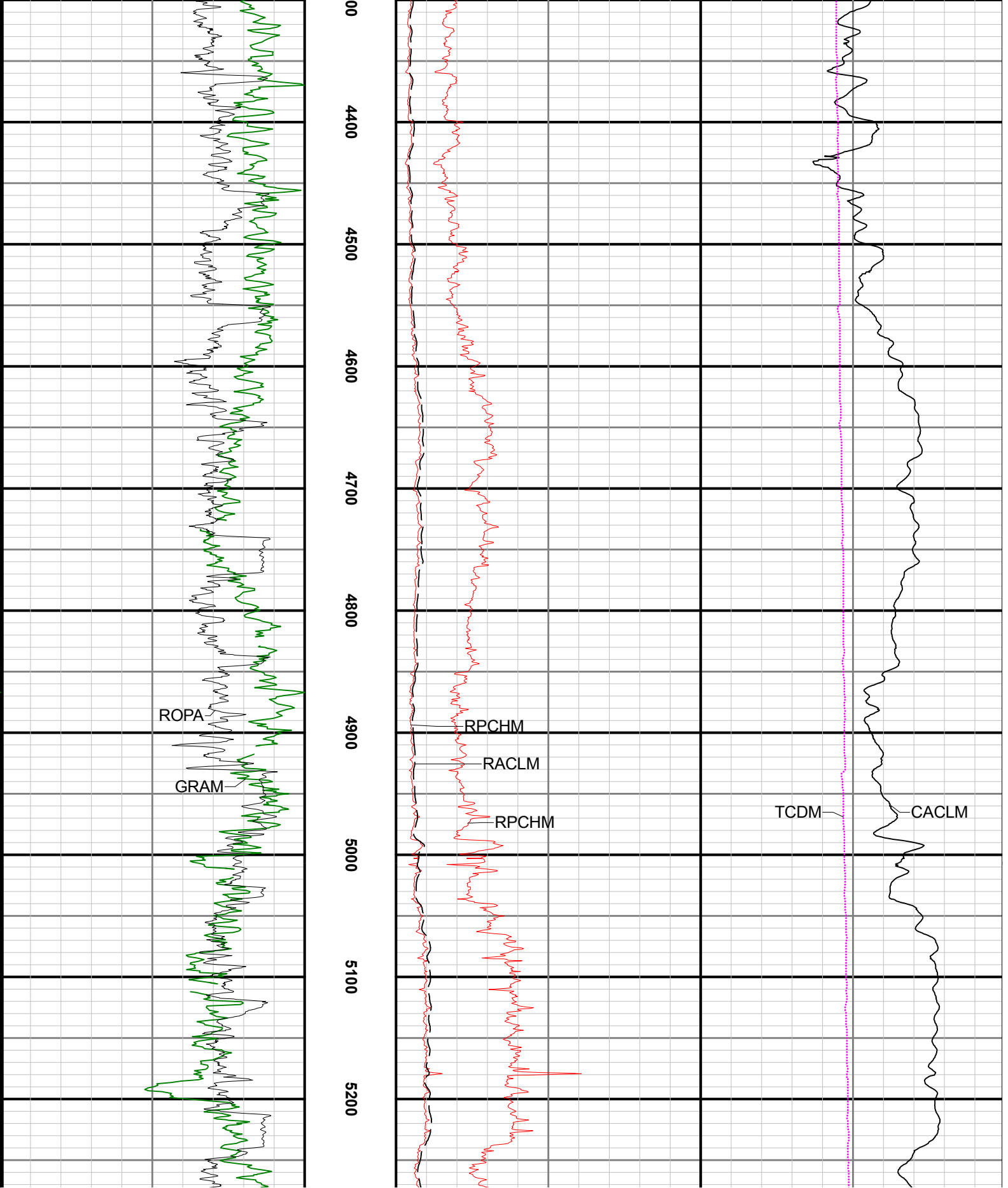
Curve Mnemonics

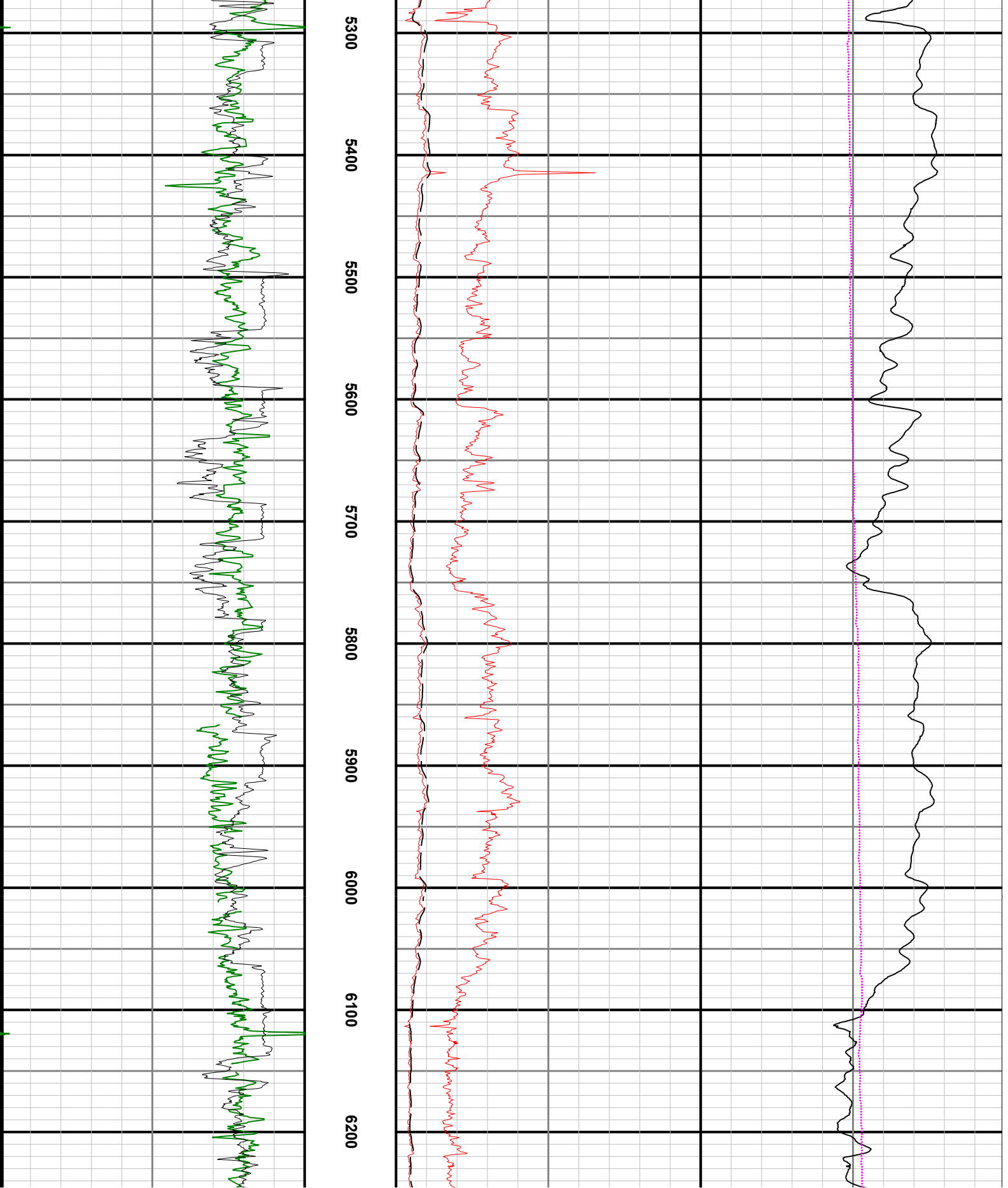
| Presented Curves | Description | Units |
|------------------|---|--------|
| CACLM | Conductivity Attenuation - Corrected - 400kHz | mmho/m |
| RACLM | Resistivity Attenuation - Corrected - 400kHz | ohm.m |
| RPCHM | Resistivity Phase - Corrected - 2MHz | ohm.m |
| ROPA | Depth Averaged ROP 3 ft Average | ft/h |
| GRAM | Gamma Ray - Apparent - Memory 3 ft Average | API |
| TCDM | Downhole Temperature | degF |

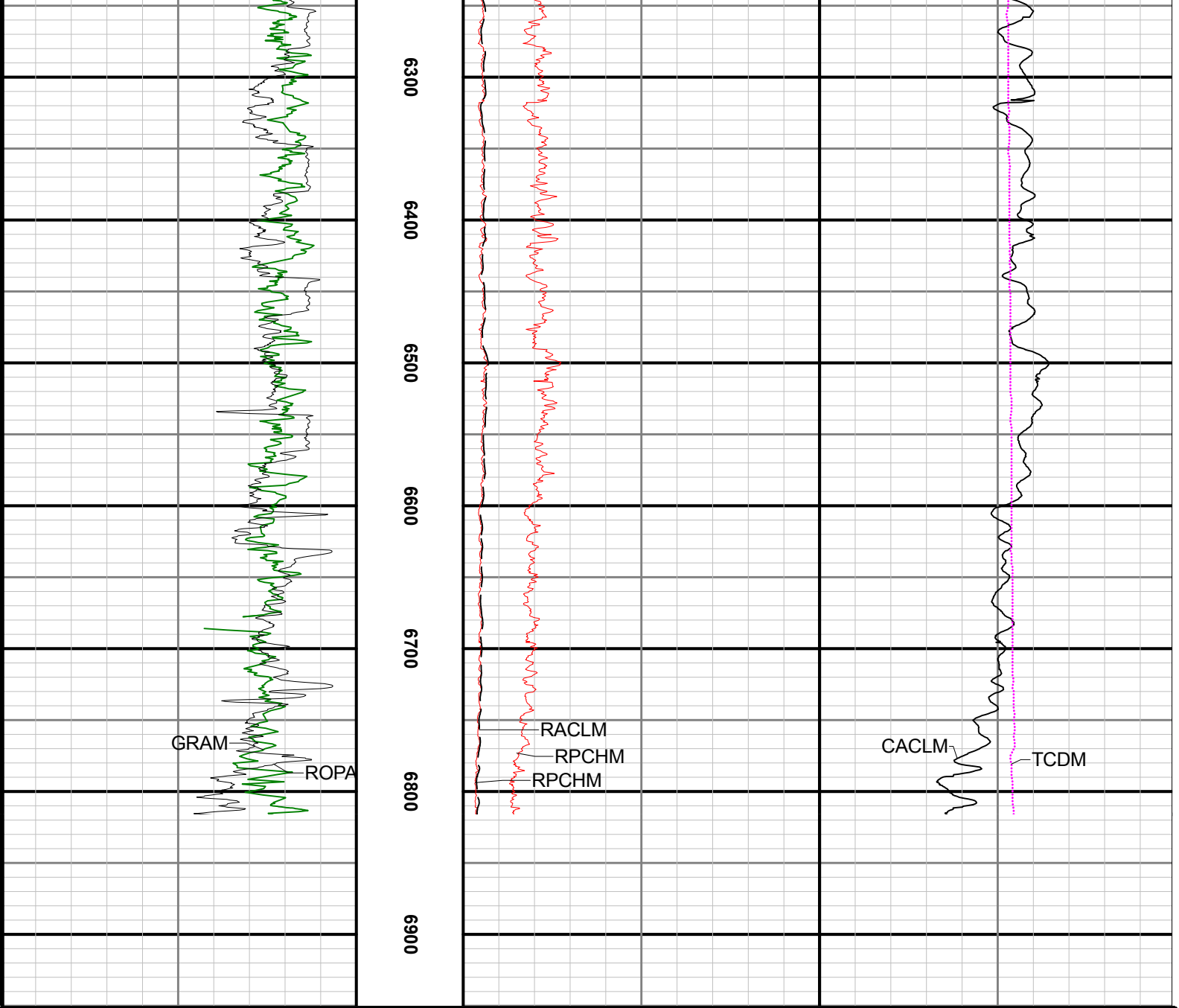












GRAM
ROPA

RACLM
RPCHM
RPCHM

CACLM
TCDM

| | | |
|--|------|-----|
| Gamma Ray - Apparent 3 ft Average [GRAM] | 0 | 150 |
| API | | |
| Depth Averaged ROP 3 ft Average [ROPA] | 1500 | 0 |
| ft/h | | |

MD 1:1200 feet

| | | |
|--|---|----|
| Resistivity Phase - Corrected - 2MHz [RPCHM] | 0 | 40 |
| ohm.m | | |
| Resistivity Attenuation - Corrected - 400kHz [RACLM] | 0 | 40 |
| ohm.m | | |
| Resistivity Phase - Corrected - 2MHz [RPCHM] | 0 | 10 |
| ohm.m | | |

| | | |
|---|------|-----|
| Conductivity Attenuation - Corrected - 400kHz [CACLM] | 1000 | 0 |
| mmho/m | | |
| Downhole Temperature [TCDM] | 0 | 300 |
| degF | | |