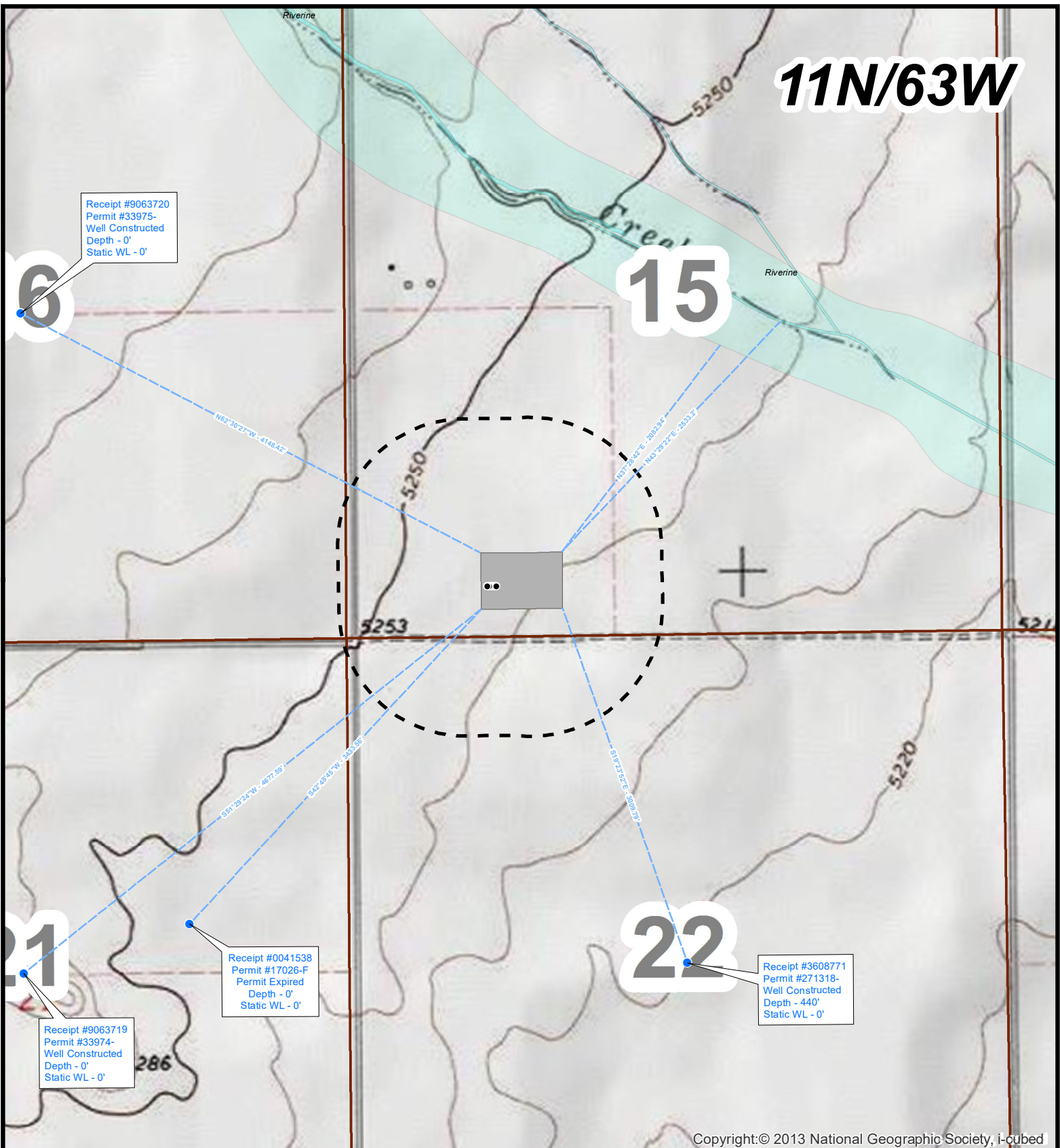


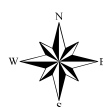
11N/63W



Copyright:© 2013 National Geographic Society, i-cubed

HighPoint RESOURCES

Hydrology Map
Critter Creek 15 SW
SESW, Section 15, T11N, R63W
Weld County, Colorado



0 250 500 1,000 Feet

Legend

- Surface Hole Location
- Water Wells (CDWR)
- Water Distance Line
- 1,000' Buffer
- Pad Location
- FEMA Floodplain (2/29/2016)
- CO Wetlands (Type)**
■ Riverine