

GENERAL NOTES:

1. THE CONTRACTOR, THROUGH ACCEPTANCE OF THIS DOCUMENT, ASSUMES NO RESPONSIBILITY, OTHER THAN STATED ABOVE FOR THE COMPLETENESS AND/OR ACCURACY OF THESE DOCUMENTS. THE OWNER AND ENGINEER UNDERSTAND THAT THE RESPONSIBILITY FOR THE ENGINEERING ADEQUACY OF THE FACILITIES DEPICTED IN THIS DOCUMENT LIES SOLELY WITH THE REGISTERED PROFESSIONAL ENGINEER WHOSE STAMP AND SIGNATURE IS AFFIXED TO THIS DOCUMENT.
2. ALL PUBLIC ROADWAY CONSTRUCTION SHALL CONFORM TO WELD COUNTY DESIGN AND CONSTRUCTION STANDARDS.
3. ALL MATERIALS AND WORKMANSHIP SHALL BE SUBJECT TO INSPECTION BY WELD COUNTY. THE COUNTY RESERVES THE RIGHT TO ACCEPT OR REJECT ANY SUCH MATERIALS AND WORKMANSHIP THAT DOES NOT CONFORM TO ITS STANDARDS AND SPECIFICATIONS.
4. THE CONTRACTOR SHALL NOTIFY THE COUNTY, A MINIMUM OF 48 HOURS AND A MAXIMUM OF 96 HOURS PRIOR TO STARTING CONSTRUCTION. LOCATION OF EXISTING UTILITIES SHALL BE VERIFIED BY THE CONTRACTOR PRIOR TO ACTUAL CONSTRUCTION. FOR INFORMATION CONTACT 811.
5. THE CONTRACTOR SHALL HAVE ONE (1) SIGNED COPY OF THE PLANS (ACCEPTED BY WELD COUNTY) AT THE JOB SITE AT ALL TIMES.
6. THE CONTRACTOR SHALL BE RESPONSIBLE FOR OBTAINING AND PAYING FOR ALL REQUIRED PERMITS. THE GENERAL CONTRACTOR SHALL HAVE A FULL TIME QUALIFIED SUPERVISOR ON THE SITE AT ALL TIMES WHILE WORK IS BEING PERFORMED.
7. A PLAN FOR TRAFFIC CONTROL DURING CONSTRUCTION SHALL BE SUBMITTED TO WELD COUNTY FOR ACCEPTANCE WITH THE PERMIT APPLICATION. AN EXCAVATION OR PUBLIC IMPROVEMENTS CONSTRUCTION PERMIT WILL NOT BE ISSUED WITHOUT AN APPROVED TRAFFIC CONTROL PLAN FOR TRAFFIC CONTROL DURING CONSTRUCTION.
8. THE GENERAL CONTRACTOR IS TO GUARANTEE ALL WORK INCLUDING WORK DONE BY SUBCONTRACTORS FOR A PERIOD OF ONE YEAR COMMENCING WITH SUBSTANTIAL COMPLETION OF THE WORK.
9. CONTRACTOR TO REVIEW AND BECOME FAMILIAR WITH ALL EXISTING CONDITIONS PRIOR TO COMMENCING WORK. ANY CONDITIONS NOT INDICATED ON THE CONTRACT DOCUMENTS ARE TO BE REPORTED TO THE ENGINEER PRIOR TO BEGINNING WORK.
10. THE CONTRACTOR SHALL REMOVE ALL DEBRIS AS A RESULT OF THIS PROJECT.
11. THE CONTRACTOR SHALL BE RESPONSIBLE FOR ALL CONSTRUCTION MEANS, METHODS, TECHNIQUES AND PROCEDURES.
12. THE CONTRACTOR SHALL BE RESPONSIBLE FOR ALL ASPECTS OF SAFETY AND TRAFFIC CONTROL DURING CONSTRUCTION.
13. CONTRACTOR TO OBTAIN AND COMPLY WITH THE WELD COUNTY RIGHT-OF-WAY PERMIT STANDARD PROVISIONS.
14. THE BENCHMARK USED FOR THIS SITE IS CONTROL POINT "CP CODY" N 1252424.18' E 3161786.55', ELEVATION = 5069.20" (NAVD 88).
15. FOR SURVEY CONTROL AND DATUM INFORMATION, CONTACT BASELINE CORPORATION.
16. COORDINATES SHOWN ON THIS DRAWING ARE MODIFIED STATE PLANE COORDINATES. TO REDUCE TO STATE PLANE COORDINATES, SCALE AT .9997236514, (1.0002764250) ABOUT THE ORIGIN (0,0).
17. ALLOUT MONUMENTS DESTROYED DURING CONSTRUCTION TO BE REPLACED BY PROFESSIONAL LAND SURVEYOR.
18. ALL CMP PIPE IS TO BE ALUMINIZED PIPE.
19. ANY DAMAGE TO FENCE SHALL BE IMMEDIATELY REPAIRED.
20. REFER TO "PRELIMINARY GEOTECHNICAL ENGINEERING REPORT, BROOMFIELD CENTRAL GATHERING FACILITY, PHASE 1, SOUTHWEST CORNER OF WELD COUNTY ROADS 6 AND 15," BY COLE GARNER GEOTECHNICAL, DATED JULY 5, 2017 FOR COMPACTION REQUIREMENTS AND PAVEMENT SPECIFICATIONS.
21. WORK IN CDOT RIGHT-OF-WAY REQUIRES A CDOT PERMIT AND TRAFFIC CONTROL PLAN. CONTRACTOR RESPONSIBLE FOR ALL CDOT REQUIREMENTS.



<u>EXISTING LINETYPES</u>	<u>PROPOSED LINETYPES</u>
— 81 ————	———— 81
———— 5280 ————	———— 5280 ————
—————	—————
—————	—————
—————	—————
———— W ———— W ————	———— W ————
———— IRR ———— IRR ————	———— IRR ————
———— GAS ———— GAS ————	———— GAS ————
———— OHU ———— OHU ————	———— OHU ————
———— HVT ———— HVT ————	———— HVT ————
———— E ———— E ————	———— E ————
———— T ———— T ————	———— T ————
———— FO ———— FO ————	———— FO ————
———— CTV ———— CTV ————	———— CTV ————

OWNER:

ELEVATION MIDSTREAM, LLC.
CONTACT: MATTHEW EYSER
370 17th STREET, SUITE 3500
DENVER, CO 80202
720.974.7793

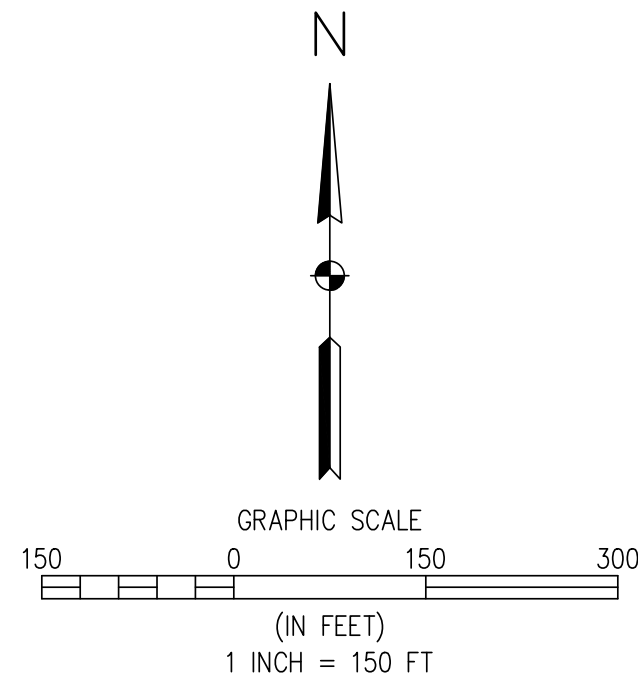
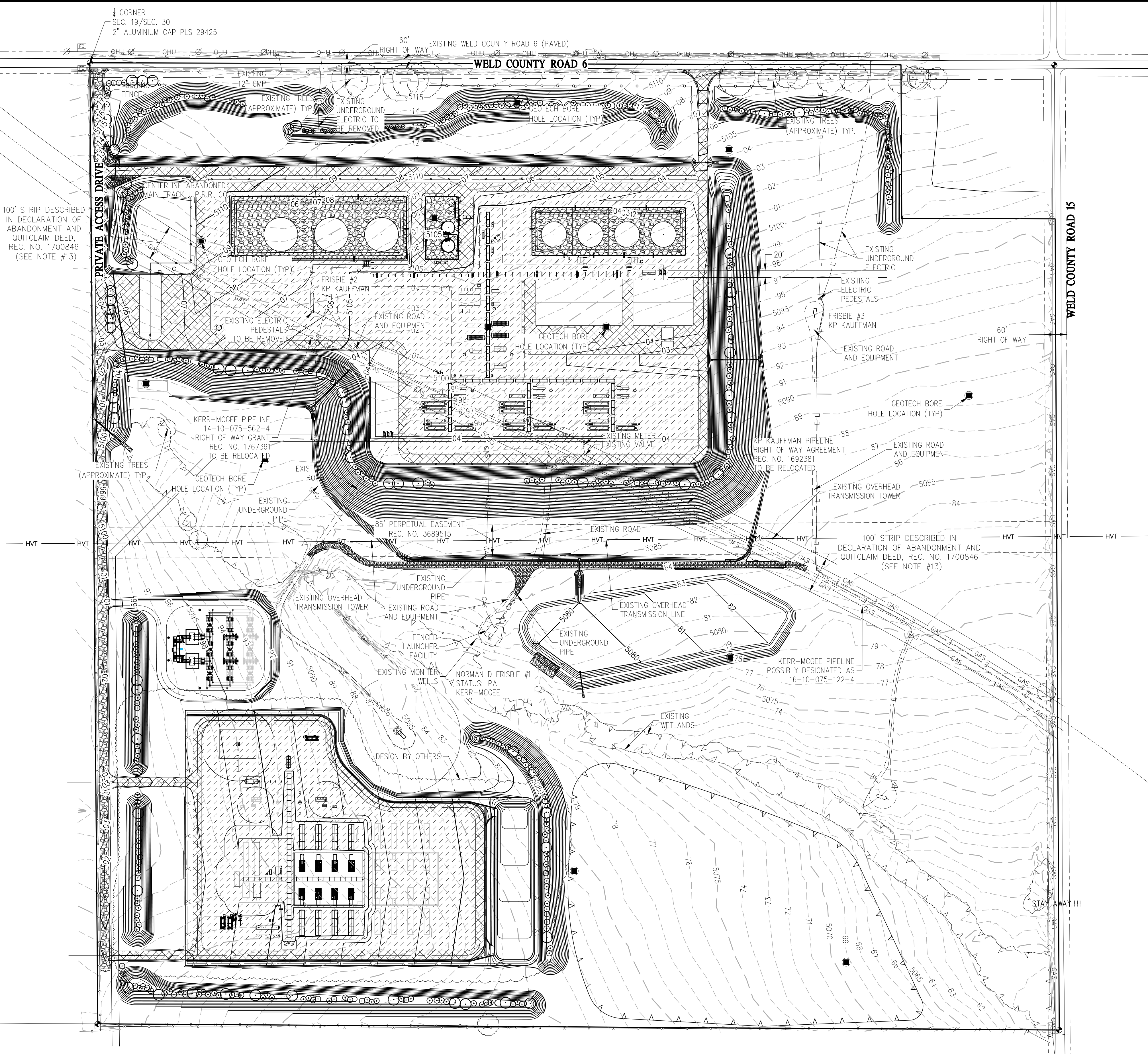
ENGINEER:

BASILINE ENGINEERING
CONTACT: NOAH NEMMERS, PE
700 12th STREET, SUITE 220
GOLDEN, CO 80401
303.940.9966

SHEET NUMBER	SHEET TITLE
C1	COVER SHEET
C2	OVERALL GRADING PLAN
C3	DETAILED SITE & POND GRADING & EROSION CONTROL PLAN
C4	DETAILED FRESH WATER POND GRADING & EROSION CONTROL PLAN
C5	EROSION CONTROL DETAIL SHEET
C6	SITE PLAN
C7	ACCESS ROAD PLAN & PROFILE STA 1+00.00 - 15+00.00
C8	ACCESS ROAD PLAN & PROFILE STA 15+00.00 - 27+86.47
C9	STORM PLAN & PROFILE
C10	HISTORIC DRAINAGE PLAN
C11	DEVELOPED DRAINAGE PLAN
C12	DETAIL SHEET

WELD COUNTY PLANNING DEPARTMENT	KIM OGLE 1555 N 17TH AVE GREELEY, COLORADO 80631 (970) 353-6100 X3540
WELD COUNTY SHERIFF'S DEPARTMENT	STEVE REAMS WELD COUNTY SHERIFF (970) 356-4015 OR 911
MOUNTAIN VIEW FIRE PROTECTION DISTRICT	9119 E. COUNTY LINE ROAD LONGMONT, CO 80501 (303) 772-0710 OR 911
COLORADO OIL & GAS CONSERVATION COMMISSION	1120 LINCOLN STREET DENVER, CO 80203 (303) 894-2100
ENVIRONMENTAL PROTECTION AGENCY REGION VIII	1595 WYNKOOP STREET DENVER, CO 80202 (303) 312-6312
CDOT	GLORIA HICE-IDLER 1420 2ND STREET GREELEY, COLORADO 80631 (970) 350-2148
ATMOS ENERGY	JERRY ADAMS P.O. BOX 1200 GREELEY, CO. 80631 (970) 304-2075
CENTURYLINK COMMUNICATIONS	12680 WCR 58 GREELEY COLORADO 80634 (970) 350-2941
XCEL ENERGY	TERRY STENCEL 1500 6TH AVE GREELEY CO, 80631 (800) 895-4999





LEGEND

EXISTING LINETYPES	PROPOSED LINETYPES	
81	81	MINOR CONTOUR (1' INTERVAL)
5280	5280	MAJOR CONTOUR (5' INTERVAL)
		PROPERTY BOUNDARY
		RIGHT-OF-WAY
		EASEMENT
		EDGE OF ASPHALT
		EDGE OF GRAVEL
E	E	UNDERGROUND ELECTRIC
HVT	HVT	HIGH VOLTAGE TRANSMISSION
GAS	GAS	GASLINE
EXISTING SYMBOLS	PROPOSED SYMBOLS	
XX (BORE HOLE NUMBER)		
-X.X (DEPTH TO GROUND WATER)		
		GEOTECH TEST HOLE
		DECIDUOUS TREE
		ELECTRIC PEDESTAL
		POWER POLE
		ALIQUOT CORNER AS DESCRIBED
		CONTROL POINT
		EXISTING MONITORING WELL

CUT & FILL CALCULATIONS:

STRIP 6" OF TOPSOIL ACROSS SITE (STRIPPING UNDER LANDSCAPE BERMS NOT REQUIRED)	-	-	USE FOR BUILDING LANDSCAPE OUTSIDE FENCE
GENERAL SITE EXCAVATION/CUT (EXCLUDING STRIPPING)	-	69,941	
GENERAL SITE FILL (EXCLUDING TOPSOIL, IMPORTED AGGREGATE AND ASPHALT)	-	114,700	
NET CUT/FILL OF ON-SITE MATERIAL (EXCLUDING STRIPPING AND IMPORTS)	-	44,759	
TOTAL IMPORTED AGGREGATE & STRUCTURAL FILL	-	-	
IMPORTED ASPHALT	-	-	

EXCAVATED CUT		
AREA (SQFT)	VOLUME (CYD)	
-	-	USE FOR BUILDING LANDSCAPE OUTSIDE FENCE
-	69,941	
-	114,700	
-	44,759	
-	-	
-	-	

DESIGNED BY

JDD

DATE

PREPARED BY

REVISION DESCRIPTION

ELEVATION MIDSTREAM, LLC.

BADGER CENTRAL GATHERING FACILITY

NE QUARTER SEC. 30, T1N, R67W

OVERALL GRADING PLAN

WELD

PRELIMINARY NOT FOR CONSTRUCTION

FOR AND ON BEHALF OF

BASELINE CORPORATION

INITIAL SUBMITTAL

XX/XX/XX

DRAWING SIZE

24" x 36"

SURVEY FIRM

XX/XX/XX

SURVEY DATE

XX/XX/XX

JOB NO.

COXXXX

DRAWING NAME

EXTING7W30-01 CGF GRADING.dwg

SHEET

2 OF 12

BASELINE

Engineering - Planning - Surveying

1650 FORD STREET • GOLDEN, COLORADO 80401

P. 303.940.9966 • F. 303.940.9965 • www.baselinecorp.com

DESIGNED BY

JDD

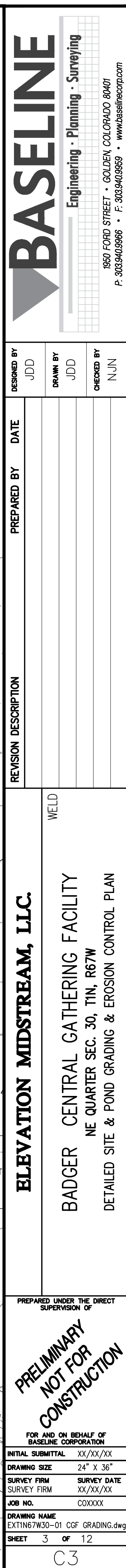
DRAWN BY

JDD

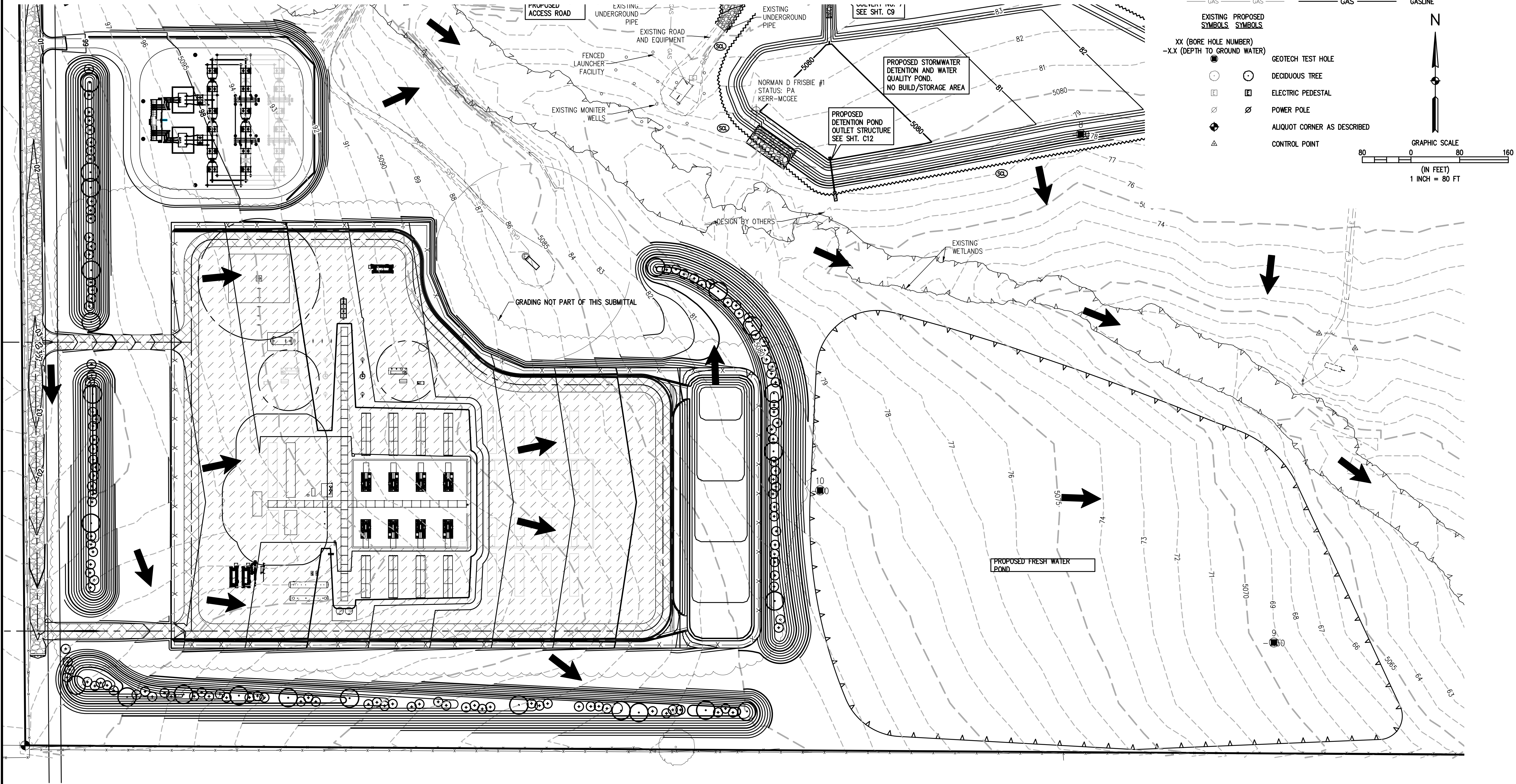
CHECKED BY

NJN

C2



M:\co - Well Head Staking\EXT1N6\W30-01\Drawings\EXT1N6\W30-01 CGF GRADING.dwg, 3/28/2018 11:26:46 AM, Jay Davis



LEGEND

EXISTING LINETYPES	PROPOSED LINETYPES	
81	81	MINOR CONTOUR (1' INTERVAL)
5280	5280	MAJOR CONTOUR (5' INTERVAL)
		PROPERTY BOUNDARY
		RIGHT-OF-WAY
		EASEMENT
		EDGE OF ASPHALT
		EDGE OF GRAVEL
E	E	UNDERGROUND ELECTRIC
HVT	HVT	HIGH VOLTAGE TRANSMISSION
GAS	GAS	GASLINE

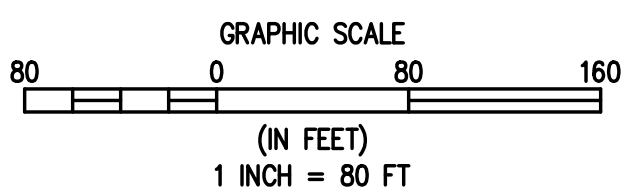
EXISTING SYMBOLS

XX (BORE HOLE NUMBER)
-X.X (DEPTH TO GROUND WATER)

- DECIDUOUS TREE
- ELECTRIC PEDESTAL
- POWER POLE
- ALQUOT CORNER AS DESCRIBED
- CONTROL POINT

PROPOSED SYMBOLS

- GEOTECH TEST HOLE
- DECIDUOUS TREE
- ELECTRIC PEDESTAL
- POWER POLE
- ALQUOT CORNER AS DESCRIBED
- CONTROL POINT



BASELINE

Engineering - Planning - Surveying
1650 FORD STREET • GOLDEN, COLORADO 80401
P. 303.940.9966 • F. 303.940.9968 • www.baselinecorp.com

DESIGNED BY JDD
DRAWN BY JDD
CHECKED BY NJN

DATE
PREPARED BY

REVISION DESCRIPTION

ELEVATION MIDSTREAM, LLC.

BADGER CENTRAL GATHERING FACILITY
NE QUARTER SEC. 30, T1N, R67W
DETAILED FRESH WATER POND GRADING & EROSION CONTROL PLAN

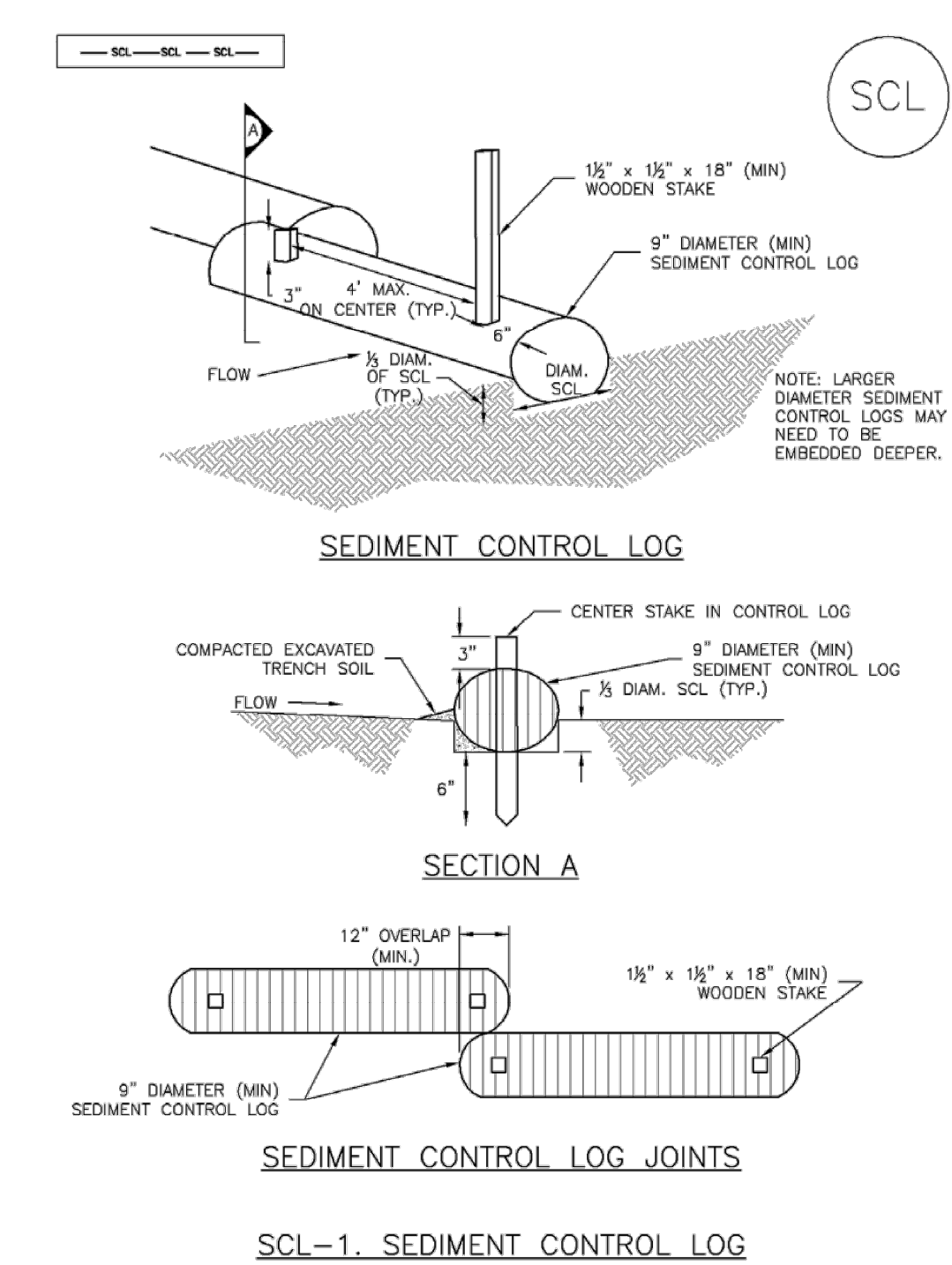
PREPARED UNDER THE DIRECT SUPERVISION OF

**PRELIMINARY
NOT FOR
CONSTRUCTION**

FOR AND ON BEHALF OF
BASELINE CORPORATION
INITIAL SUBMITTAL XX/XX/XX
DRAWING SIZE 24" X 36"
SURVEY FIRM SURVEY DATE XX/XX/XX
JOB NO. CXXXXX
DRAWING NAME
EXT1N6\W30-01 CGF GRADING.dwg
SHEET 4 OF 12

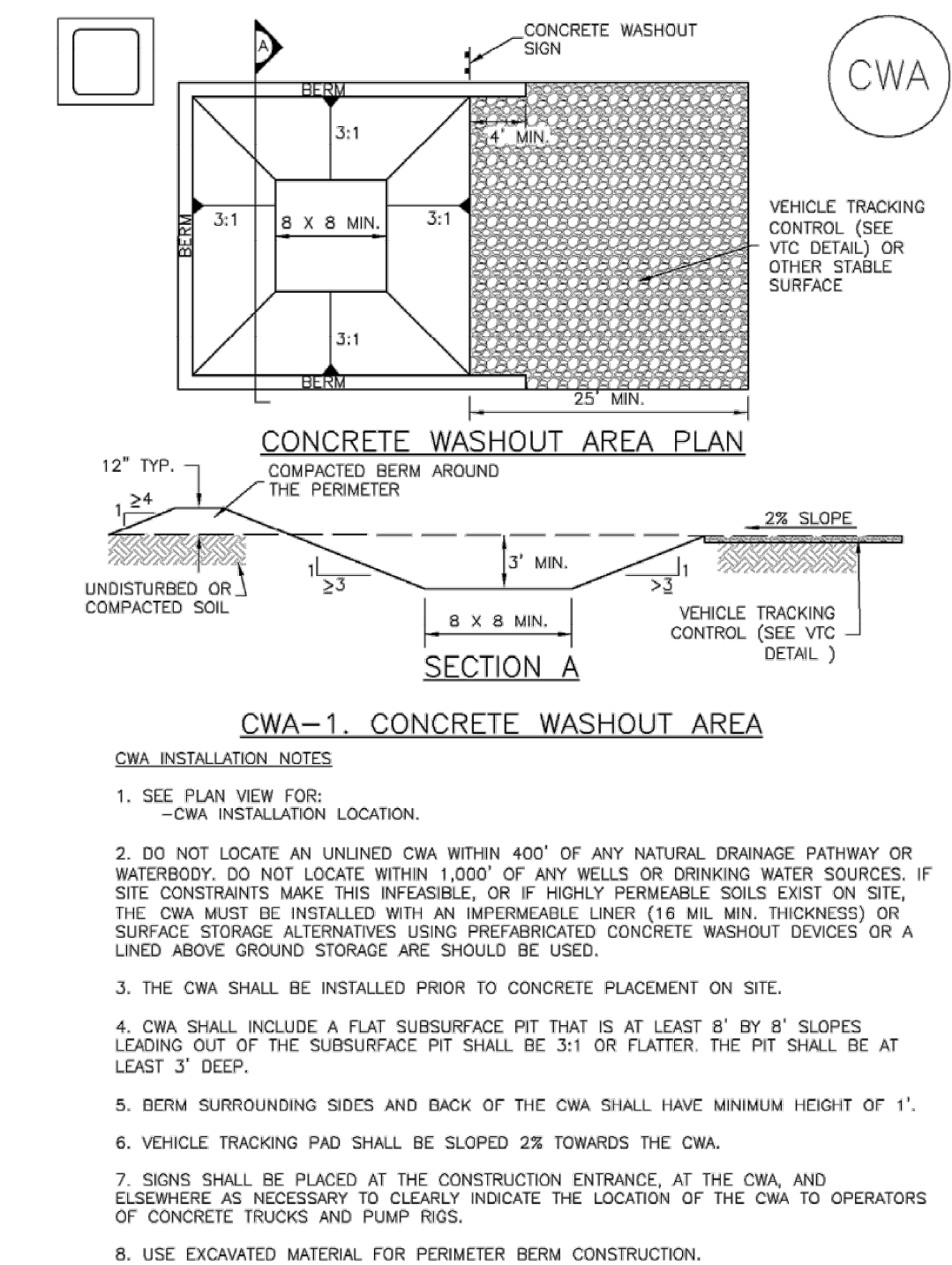
M:\Co - Well Head Staking\EXTING7W30-01\Drawings\EXTING7W30-01 CGF COVER AND DETAILS.dwg, 3/28/2018 11:26:52 AM, Joy Davis

Sediment Control Log (SCL) SC-2



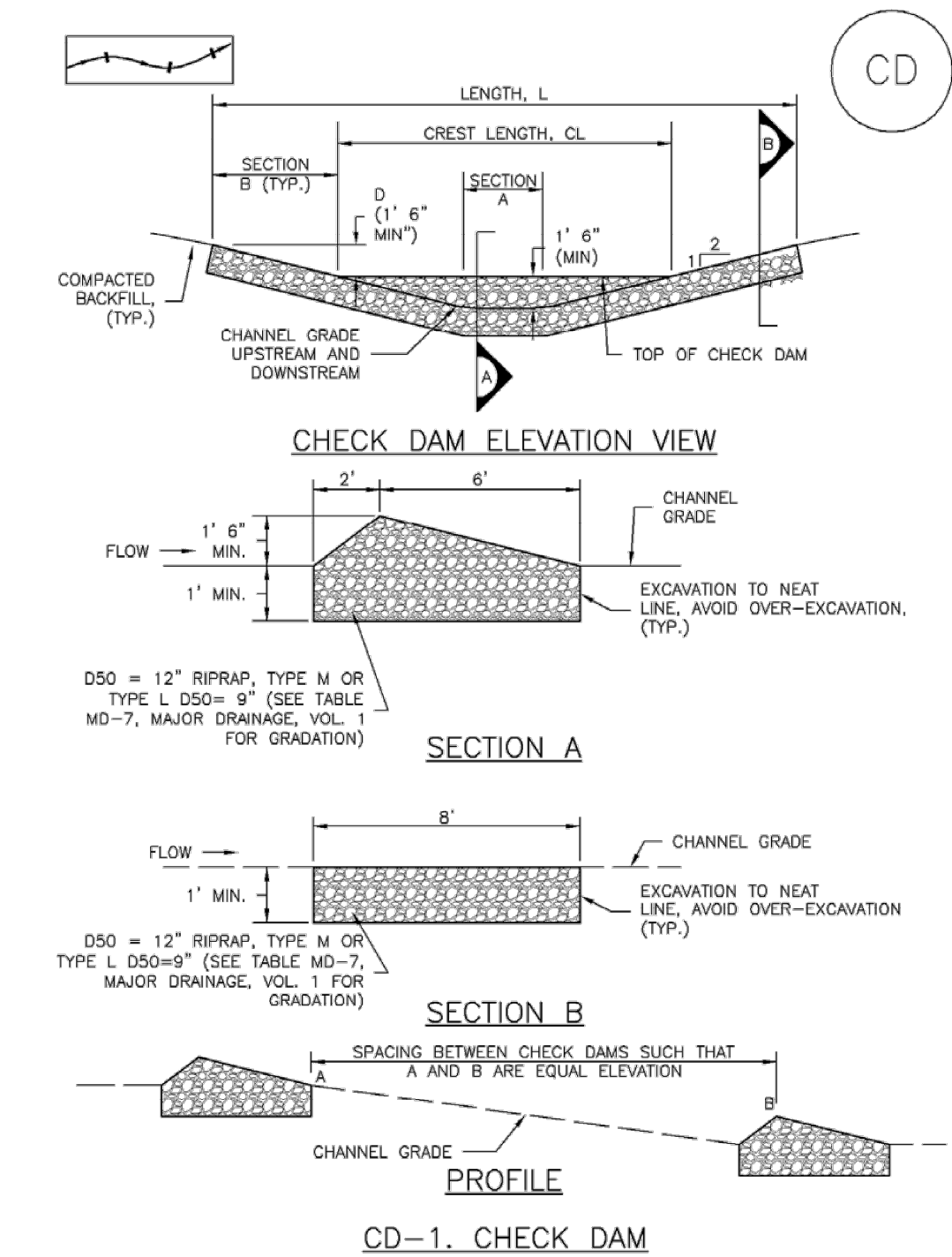
November 2010 Urban Drainage and Flood Control District
Urban Storm Drainage Criteria Manual Volume 3 SC-3

Concrete Washout Area (CWA) MM-1



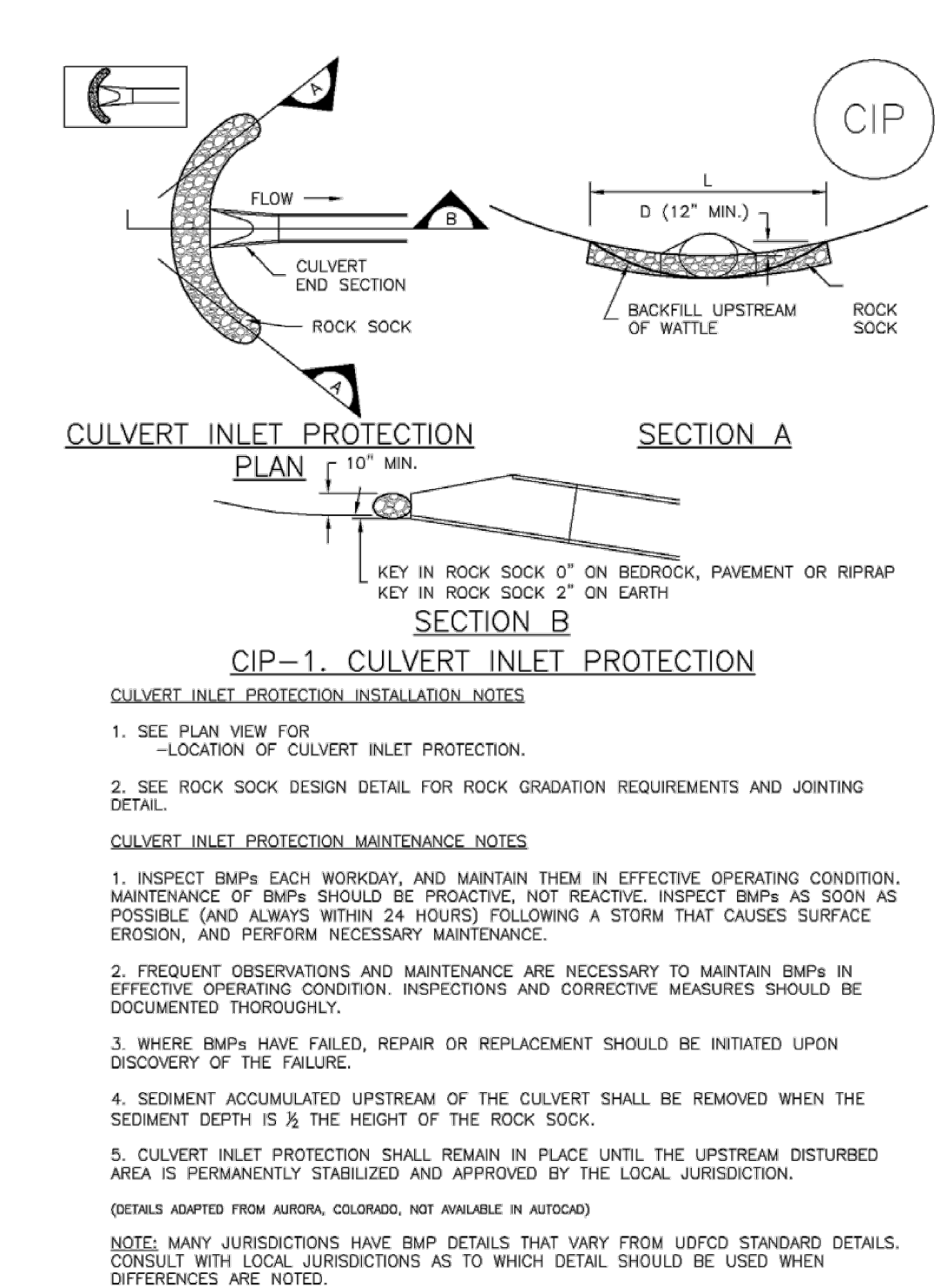
November 2010 Urban Drainage and Flood Control District
Urban Storm Drainage Criteria Manual Volume 3 CWA-3

Check Dams (CD) EC-12



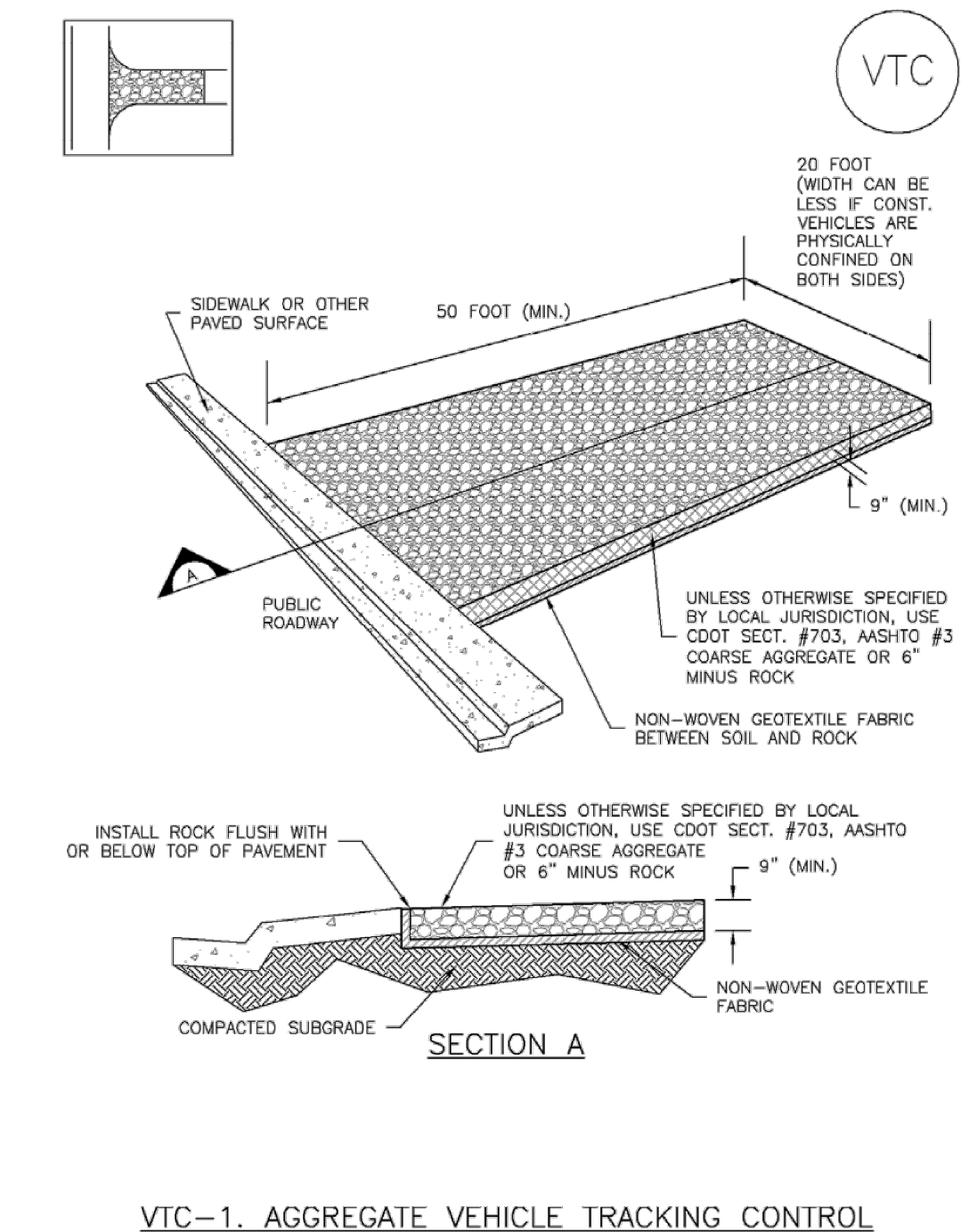
November 2010 Urban Drainage and Flood Control District
Urban Storm Drainage Criteria Manual Volume 3 CD-3

Inlet Protection (IP) SC-6



August 2013 Urban Drainage and Flood Control District
Urban Storm Drainage Criteria Manual Volume 3 IP-7

Vehicle Tracking Control (VTC) SM-4



November 2010 Urban Drainage and Flood Control District
Urban Storm Drainage Criteria Manual Volume 3 VTC-3

- EROSION AND SEDIMENT CONTROL PLAN GENERAL NOTES:**
1. THE DISTURBANCE AREA FOR THE PROJECT IS GREATER THAN ONE ACRE; THEREFORE, A STATE OF COLORADO CONSTRUCTION STORMWATER DISCHARGE PERMIT IS TO BE OBTAINED BY CONTRACTOR.
 2. THE CONTRACTOR IS RESPONSIBLE FOR IMPLEMENTING AND MAINTAINING EROSION AND SEDIMENT CONTROL MEASURES AT ALL TIMES DURING CONSTRUCTION. THE STORMWATER MANAGEMENT PLANS WILL BE MODIFIED WITH APPROPRIATE APPROVALS FROM THE ENGINEER, AND MAY REQUIRE ADDITIONAL MEASURES AS FIELD CONDITIONS WARRANT.
 3. A THOROUGH INSPECTION OF THE STORMWATER MANAGEMENT PLAN BEST MANAGEMENT PRACTICES (BMP'S) SHALL BE PERFORMED EVERY FOURTEEN (14) CALENDAR DAYS AND AFTER ANY PRECIPITATION OR SNOWMELT EVENT. PERIODIC INSPECTIONS SHALL ALSO INCLUDE INSPECTING EQUIPMENT FOR LEAKS AND REVIEWING EQUIPMENT MAINTENANCE PRACTICE. ALL INSPECTIONS AND MAINTENANCE SHALL BE DOCUMENTED BY THE PROJECT EROSION CONTROL SUPERVISOR AND MADE AVAILABLE TO THE ENGINEER UPON REQUEST. ANY EROSION CONTROL BMP'S THAT HAS BEEN COMPROMISED OR HAS BEEN DISTURBED SHALL BE REPLACED OR RECONSTRUCTED. IT IS THE RESPONSIBILITY OF THE CONTRACTOR TO HAVE ALL EROSION CONTROL BMP'S IN PLACE AND EFFECTIVE PRIOR TO A STORM EVENT.
 4. THE STORMWATER MANAGEMENT PLAN LOG BOOK SHALL BE UPDATED EVERY FOURTEEN (14) DAYS. THIS LOG SHALL REMAIN ON SITE AVAILABLE FOR REVIEW BY THE ENGINEER UPON REQUEST. MAINTENANCE ACTIVITIES TO CORRECT PROBLEMS NOTED DURING INSPECTIONS MUST BE DOCUMENTED AND KEPT IN THE STORMWATER MANAGEMENT PLAN LOG BOOK.
 5. ALL STREETS WITHIN AND IMMEDIATELY SURROUNDING A CONSTRUCTION SITE SHALL BE CLEANED OF DIRT AND DEBRIS ON A DAILY BASIS. STREETS SHALL BE CLEANED BY SCRAPING AND SWEEPING THE DIRT OFF THE ROADWAYS. SCRAPED OR SWEEPED MATERIAL SHALL NOT BE DEPOSITED IN THE ROADSIDE DITCHES OR IN THE CREEK. DIRT TRACKED ONTO ROADWAYS AND OTHER PAVED SURFACES SHALL BE CLEANED UP BY THE END OF THE WORKDAY.
 6. ALL CONSTRUCTION SITE OPERATORS SHALL CONTROL WASTE SUCH AS DISCARDED BUILDING MATERIALS, CONCRETE TRUCK WASHOUT, HAZARDOUS CHEMICALS (TO INCLUDE BUT NOT LIMITED TO HEAVY EQUIPMENT MAINTENANCE FLUIDS, MOTOR OIL, ANTIFREEZE AND VEHICLE FUEL), LITTER, AND SANITARY WASTE AT THE CONSTRUCTION SITE THAT MAY CAUSE ADVERSE IMPACTS TO STORMWATER QUALITY.
 7. ALL POTENTIAL POLLUTION SOURCES ON-SITE SHALL BE IDENTIFIED AND CONTROL MEASURES INSTALLED AND PRACTICED TO MINIMIZE THE LIKELIHOOD OF A RELEASE.
 8. ALL PORTABLE TOILET FACILITIES SHALL BE LOCATED AWAY FROM GUTTERS, INLETS, DITCHES, DRAINAGEWAYS, RECEIVING WATERS AND AREAS SUSCEPTIBLE TO FLOODING OR DAMAGE BY CONSTRUCTION EQUIPMENT.
 9. ALL PORTABLE TOILET FACILITIES SHALL BE SECURED IN PLACE BY STAKES INTO THE GROUND TO PREVENT TIPPING.
 10. STOCKPILES INCLUDING LANDSCAPING MATERIALS, EARTH MATERIALS AND DIRT FROM GRADING OR EXCAVATION SHALL NOT BE LOCATED ADJACENT TO WATERWAYS.
 11. ALL MATERIAL IMPORTED TO OR EXPORTED FROM THE SITE SHALL BE PROPERLY COVERED TO PREVENT THE LOSS OF MATERIAL DURING TRANSPORT. HAUL ROUTES MUST BE PRE-APPROVED BY THE COUNTY. NO MATERIAL SHALL BE TRANSPORTED TO ANOTHER SITE WITHOUT FIRST OBTAINING A HAULING PERMIT FROM THE COUNTY.

- PERFORMANCE STANDARD NOTES:**
1. TEMPORARY EROSION CONTROL FACILITIES AND/OR PERMANENT FACILITIES INSTALLED TO CONTROL EROSION OF AN EARTH DISTURBANCE OPERATION SHALL BE INSTALLED BEFORE ANY EARTH DISTURBANCE OPERATIONS TAKE PLACE.
 2. EARTH DISTURBANCES SHALL BE CONDUCTED IN SUCH A MANNER SO AS TO EFFECTIVELY REDUCE ACCELERATED SOIL EROSION AND RESULTING SEDIMENTATION.
 3. PERSONS ENGAGED IN EARTH DISTURBANCES SHALL DESIGN, IMPLEMENT, AND MAINTAIN ACCEPTABLE SOIL EROSION AND SEDIMENTATION CONTROL MEASURES, IN CONFORMANCE WITH THE EROSION CONTROL TECHNICAL STANDARDS ADOPTED BY WELD COUNTY.
 4. EARTH DISTURBANCES SHALL BE DESIGNED, CONSTRUCTED AND COMPLETED IN SUCH A MANNER SO THAT THE EXPOSED AREA OF ANY DISTURBED LAND SHALL BE LIMITED TO THE SHORTEST POSSIBLE PERIOD OF TIME.
 5. SEDIMENT CAUSED BY ACCELERATED SOIL EROSION SHALL BE REMOVED FROM RUNOFF WATER BEFORE IT LEAVES THE SITE OF THE EARTH DISTURBANCE.
 6. ANY TEMPORARY OR PERMANENT FACILITY DESIGNED AND CONSTRUCTED FOR THE CONVEYANCE OF WATER AROUND, THROUGH, OR FROM THE EARTH DISTURBANCE AREA SHALL BE DESIGNED TO LIMIT THE WATER FLOW TO A NON-EROSIVE VELOCITY.
 7. RECORDS OF SPILLS, LEAKS, OR OVERFLOWS THAT RESULT IN THE DISCHARGE OF POLLUTANTS MUST BE DOCUMENTED AND MAINTAINED. SOME SPILLS MAY NEED TO BE REPORTED TO THE DIVISION IMMEDIATELY. SPECIFICALLY, A RELEASE OF ANY CHEMICAL, OIL, PETROLEUM PRODUCT, SEWAGE, ETC., WHICH MAY ENTER WATERS OF THE STATE, MUST BE REPORTED. MORE GUIDANCE IS AVAILABLE ON THE WEB AT WWW.CDPHE.STATE.CO.US/EMP/SPILLSANDRELEASED.HTM. THE DIVISION'S TOLL FREE 24-HOUR ENVIRONMENTAL EMERGENCY SPILL REPORTING LINE IS 1.877.518.5608. ALSO IMMEDIATELY CALL THE ENGINEER - RICK BEHNING AT 970.353.7600 AND WELD COUNTY - JOSH HOLBROOK AT 970.301.2622.

- BMP MAINTENANCE NOTES:**
1. IT IS ANTICIPATED THAT THE BMP'S IMPLEMENTED AT THE SITE WILL HAVE TO BE MODIFIED TO ADAPT TO CHANGING CONDITIONS OR TO ENSURE THAT POTENTIAL POLLUTANTS ARE BEING PROPERLY MANAGED AT THE SITE. WHEN BMP'S ARE MODIFIED, THE SWMP MUST BE MODIFIED TO ACCURATELY REFLECT THE ACTUAL FIELD CONDITIONS.
 2. THE OWNER/CONTRACTOR SHALL CONTINUOUSLY MAINTAIN ALL SILT FENCING SO THAT IT FUNCTIONS PROPERLY DURING CONSTRUCTION AND WORK SUSPENSIONS. ALL SILT FENCING SHALL BE REMOVED BY THE CONTRACTOR UPON SUBSTANTIAL PERMANENT STABILIZATION UNLESS OTHERWISE DIRECTED BY THE ENGINEER.
 3. ALL INLET/OUTLET PROTECTIONS WILL BE CHECKED FOR MAINTENANCE AND FAILURE. SEDIMENT SHALL BE REMOVED AND PROPERLY DISPOSED OF ONCE IT HAS ACCUMULATED TO HALF THE DESIGN OF THE TRAP.
 4. ALL SPILLS SHALL BE CLEANED UP IMMEDIATELY AFTER DISCOVERY, OR CONTAINED UNTIL APPROPRIATE CLEANUP METHODS CAN BE EMPLOYED. MANUFACTURE'S RECOMMENDED METHODS FOR SPILL CLEANUP SHALL BE FOLLOWED, ALONG WITH PROPER DISPOSAL METHODS.

BASELINE

Engineering • Planning • Surveying

1950 FORD STREET • GOLDEN, COLORADO 80401
P. 303.940.9966 • F. 303.940.9969 • www.baselinecorp.com

DESIGNED BY JDD
DRAWN BY JDD
CHECKED BY NJN

DATE

PREPARED BY

REVISION DESCRIPTION

ELEVATION MIDSTREAM, LLC.

BADGER CENTRAL GATHERING FACILITY
NE QUARTER SEC. 30, T1N, R67W
EROSION CONTROL DETAIL SHEET

WELD

FOR AND ON BEHALF OF
BASELINE CORPORATION

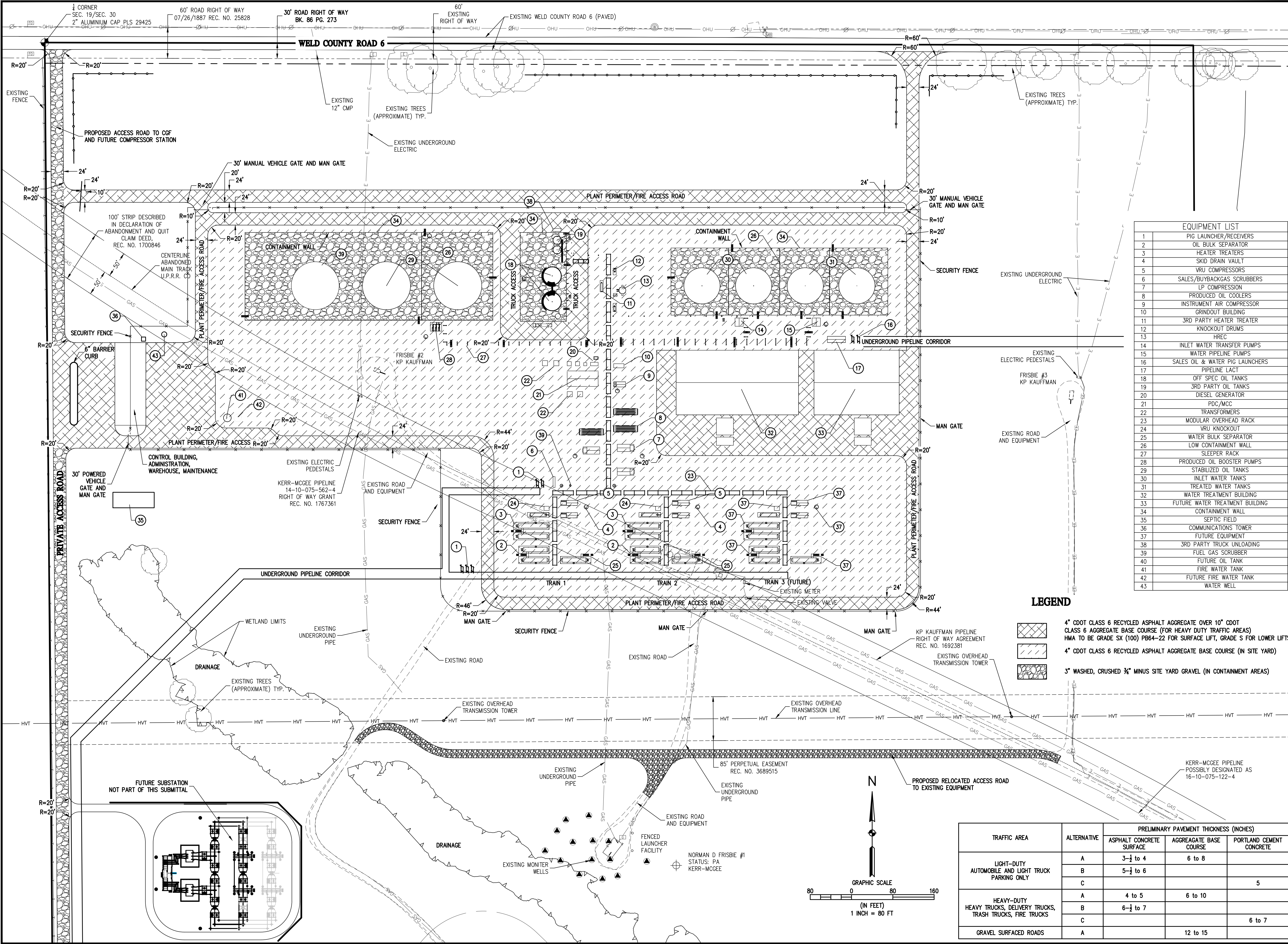
INITIAL SUBMITTAL XX/XX/XX
DRAWING SIZE 24" x 36"
SURVEY FIRM SURVEY DATE XX/XX/XX
JOB NO. C0000X
DRAWING NAME EXTING7W30-01 CGF COVER AND DETAILS.dwg
SHEET 5 OF 12

PRELIMINARY
NOT FOR
CONSTRUCTION

FOR AND ON BEHALF OF
BASELINE CORPORATION
SUPERVISION OF

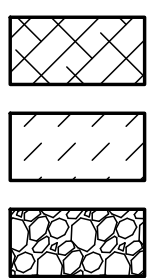
C5

M:\co - Well Head Staking\EXTING7W30-01\Drawings\EXTING7W30-01 CGF HORIZ CONTROL.dwg, 3/28/2018 11:27:28 AM, Joy Davis



EQUIPMENT LIST	
1	PIG LAUNCHER/RECEIVERS
2	OIL BULK SEPARATOR
3	HEATER TREATERS
4	SKID DRAIN VAULT
5	VRU COMPRESSORS
6	SALES/BUYBACK GAS SCRUBBERS
7	LP COMPRESSION
8	PRODUCED OIL COOLERS
9	INSTRUMENT AIR COMPRESSOR
10	GRINDOUT BUILDING
11	3RD PARTY HEATER TREATER
12	KNOCKOUT DRUMS
13	HREC
14	INLET WATER TRANSFER PUMPS
15	WATER PIPELINE PUMPS
16	SALES OIL & WATER PIG LAUNCHERS
17	PIPELINE LACT
18	OFF SPEC OIL TANKS
19	3RD PARTY OIL TANKS
20	DIESEL GENERATOR
21	PDC/MCC
22	TRANSFORMERS
23	MODULAR OVERHEAD RACK
24	VRU KNOCKOUT
25	WATER BULK SEPARATOR
26	LOW CONTAINMENT WALL
27	SLEEPER RACK
28	PRODUCED OIL BOOSTER PUMPS
29	STABILIZED OIL TANKS
30	INLET WATER TANKS
31	TREATED WATER TANKS
32	WATER TREATMENT BUILDING
33	FUTURE WATER TREATMENT BUILDING
34	CONTAINMENT WALL
35	SEPTIC FIELD
36	COMMUNICATIONS TOWER
37	FUTURE EQUIPMENT
38	3RD PARTY TRUCK UNLOADING
39	FUEL GAS SCRUBBER
40	FUTURE OIL TANK
41	FIRE WATER TANK
42	FUTURE FIRE WATER TANK
43	WATER WELL

LEGEND



- 4" CDOT CLASS 6 RECYCLED ASPHALT AGGREGATE OVER 10" CDOT CLASS 6 AGGREGATE BASE COURSE (FOR HEAVY DUTY TRAFFIC AREAS) HMA TO BE GRADE SX (100) PB64-22 FOR SURFACE LIFT, GRADE S FOR LOWER LIFTS
- 4" CDOT CLASS 6 RECYCLED ASPHALT AGGREGATE BASE COURSE (IN SITE YARD)
- 3" WASHED, CRUSHED 3/4" MINUS SITE YARD GRAVEL (IN CONTAINMENT AREAS)

TRAFFIC AREA	ALTERNATIVE	PRELIMINARY PAVEMENT THICKNESS (INCHES)		
		ASPHALT CONCRETE SURFACE	AGGREGATE BASE COURSE	PORTLAND CEMENT CONCRETE
LIGHT-DUTY AUTOMOBILE AND LIGHT TRUCK PARKING ONLY	A	3-1/2 to 4	6 to 8	
	B	5-1/2 to 6		
	C			5
HEAVY-DUTY HEAVY TRUCKS, DELIVERY TRUCKS, TRASH TRUCKS, FIRE TRUCKS	A	4 to 5	6 to 10	
	B	6-1/2 to 7		
	C			6 to 7
GRAVEL SURFACED ROADS	A		12 to 15	

BASELINE

Engineering - Planning - Surveying

1950 FORD STREET • GOLDEN, COLORADO 80401
P. 303.940.9966 • F. 303.940.9965 • www.baselinecorp.com

DESIGNED BY
JDD

DRAWN BY
JDD

CHECKED BY
NUN

DATE

PREPARED BY

REVISION DESCRIPTION

ELEVATION MIDSTREAM, LLC.

BADGER CENTRAL GATHERING FACILITY
NE QUARTER SEC. 30, T1N, R67W

SITE PLAN

FOR AND ON BEHALF OF
BASELINE CORPORATION

INITIAL SUBMITTAL XX/XX/XX

DRAWING SIZE 24" x 36"

SURVEY FIRM SURVEY DATE XX/XX/XX

JOB NO. C00000X

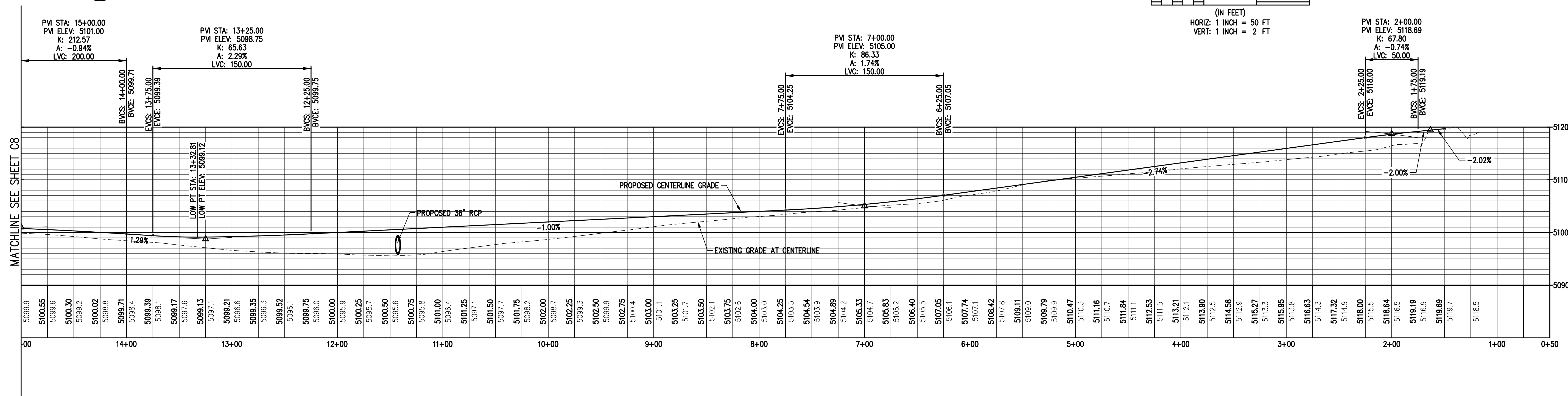
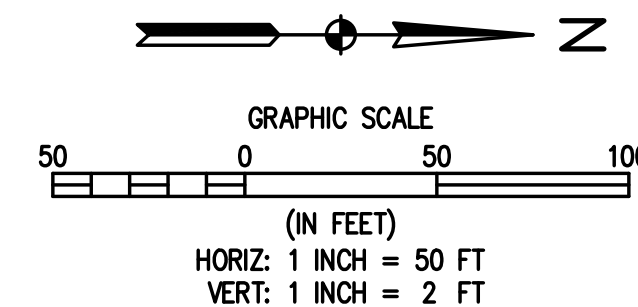
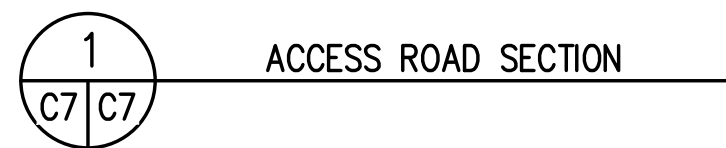
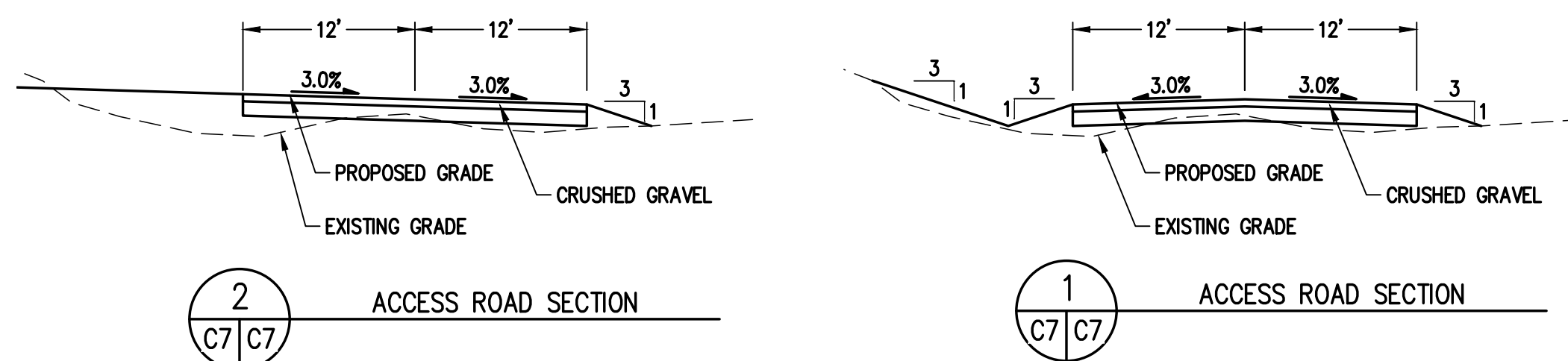
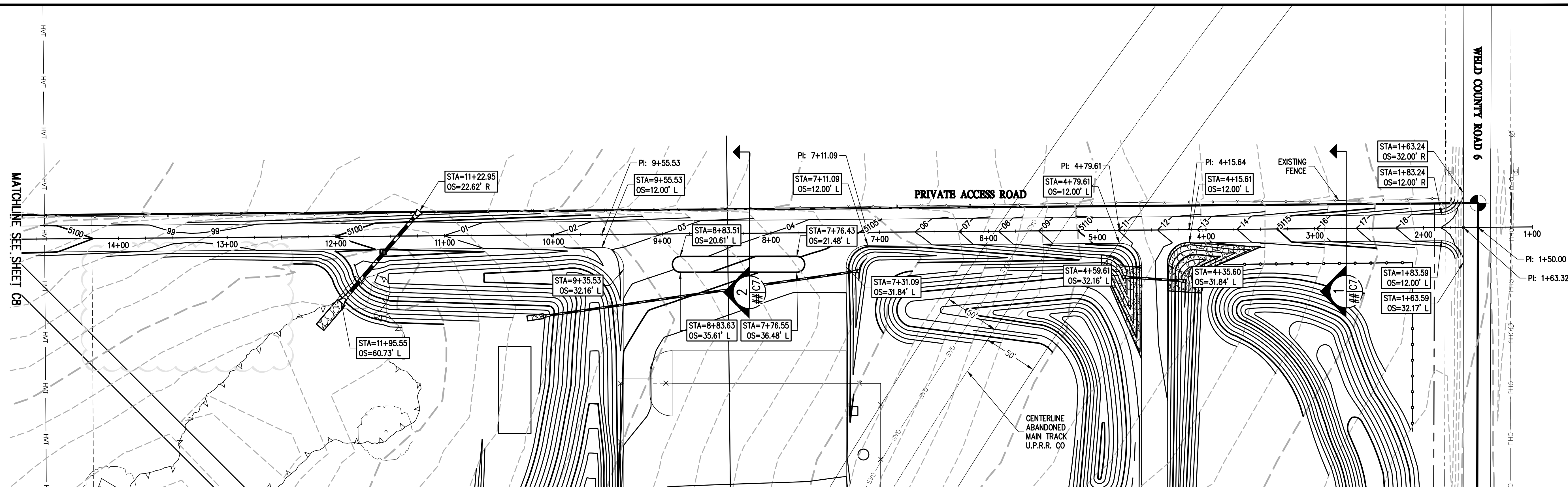
DRAWING NAME
EXTING7W30-01 CGF HORIZ CONTROL.dwg

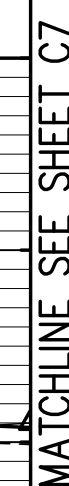
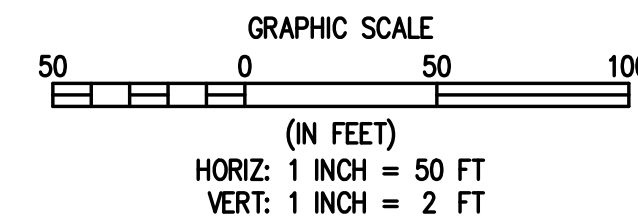
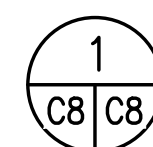
SHEET 6 OF 12

PREPARED UNDER THE DIRECT
SUPERVISION OF

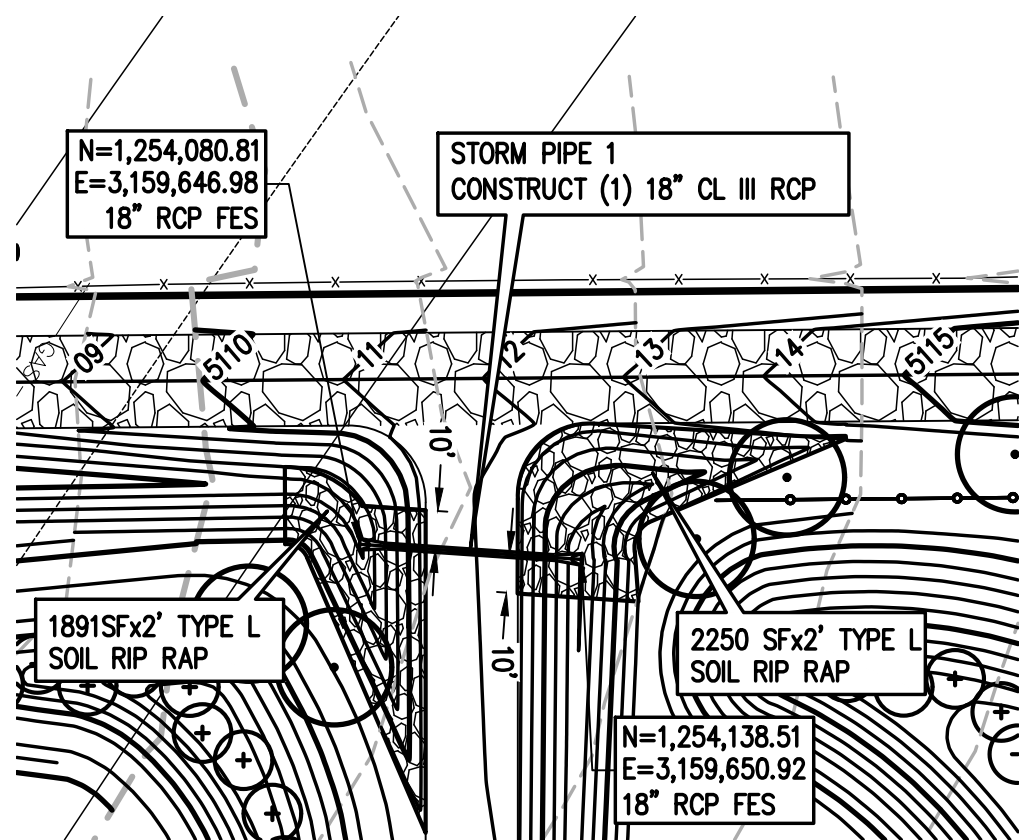
PRELIMINARY
NOT FOR
CONSTRUCTION

C6

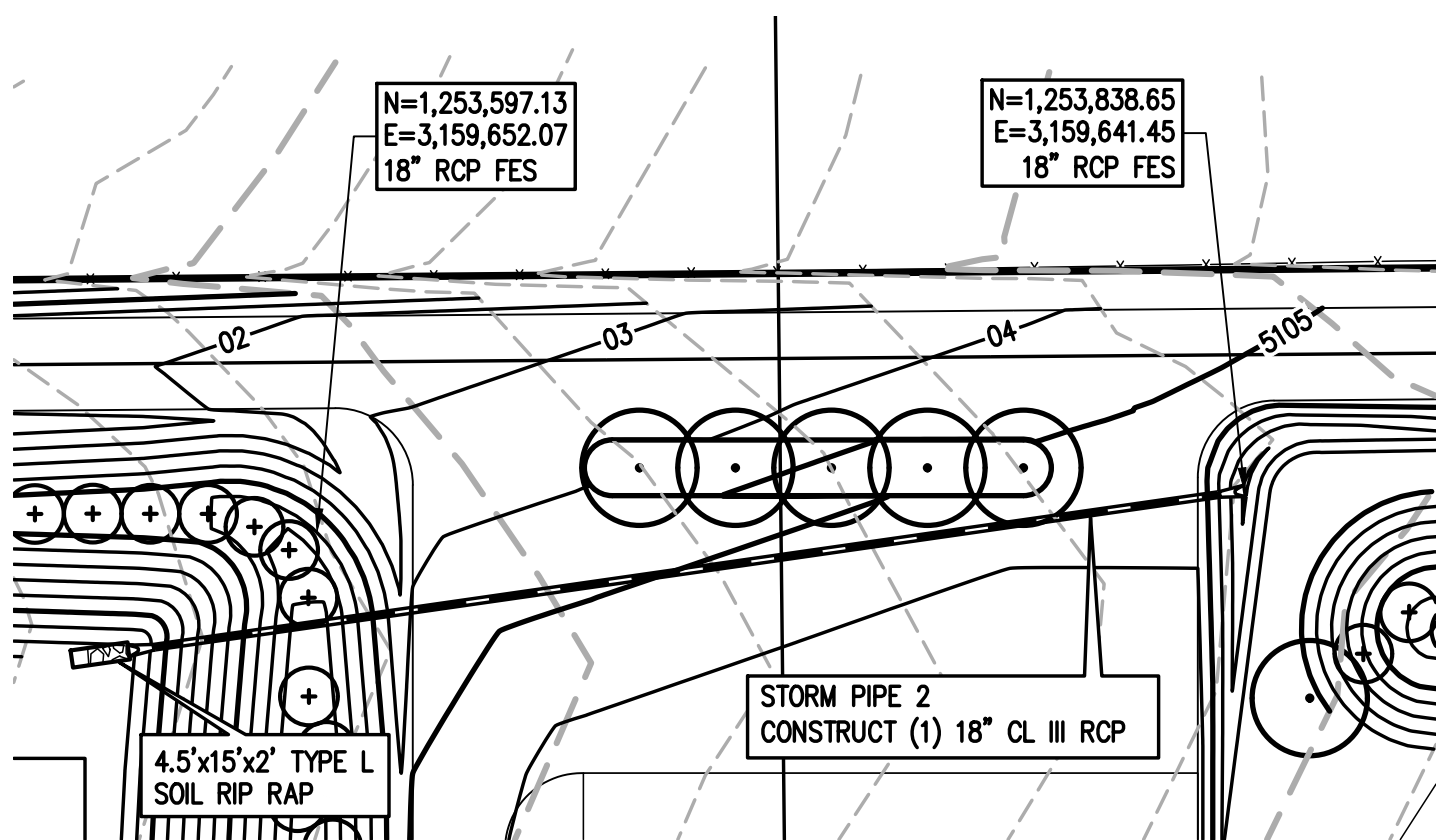
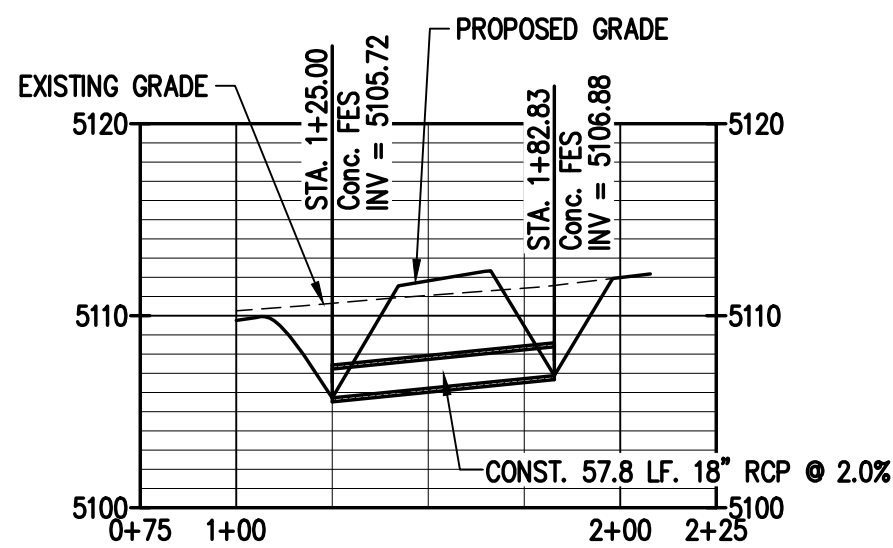
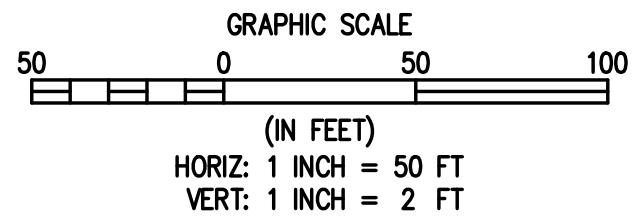




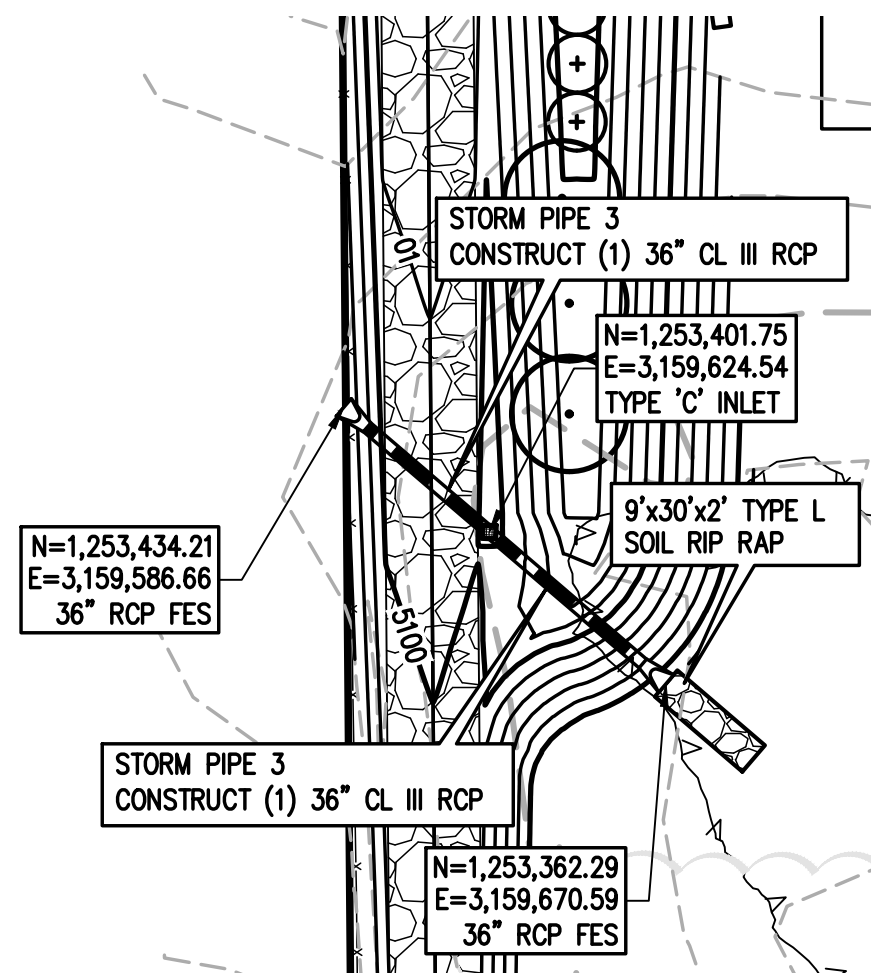
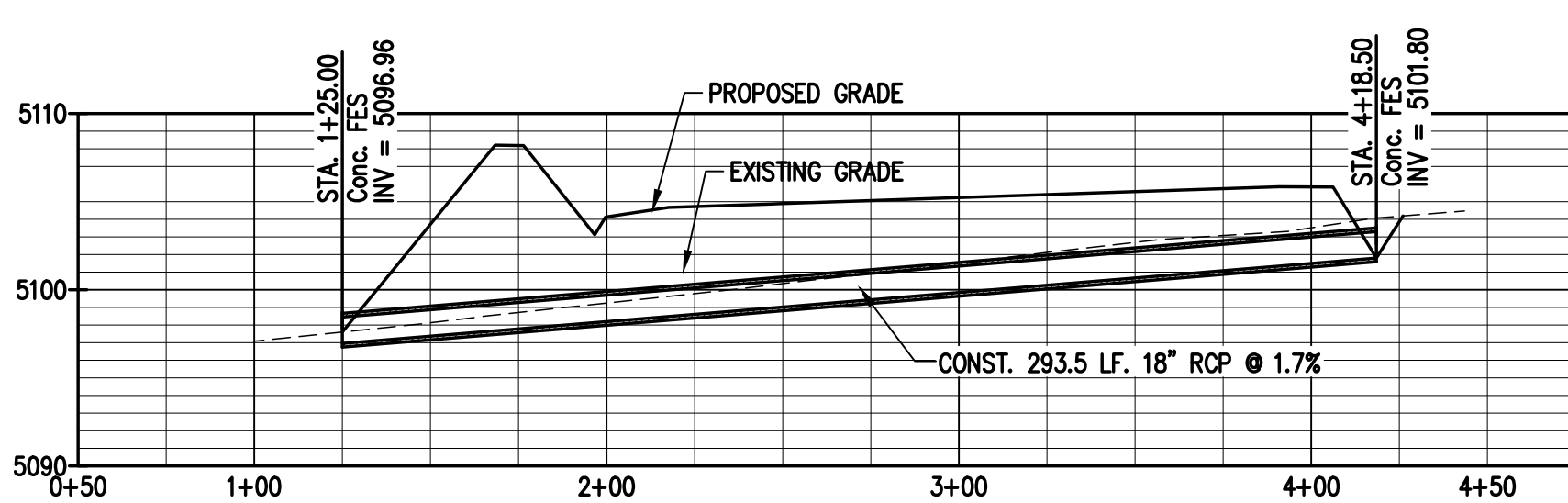
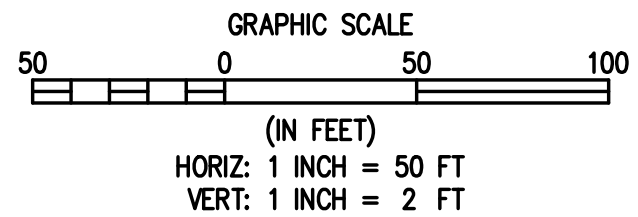
M:\co - Well Head Staking\EXTING7W30-01\Drawings\EXTING7W30-01 CGF HORIZ CONTROL.dwg, 3/28/2018 11:28:49 AM, Jay Davis



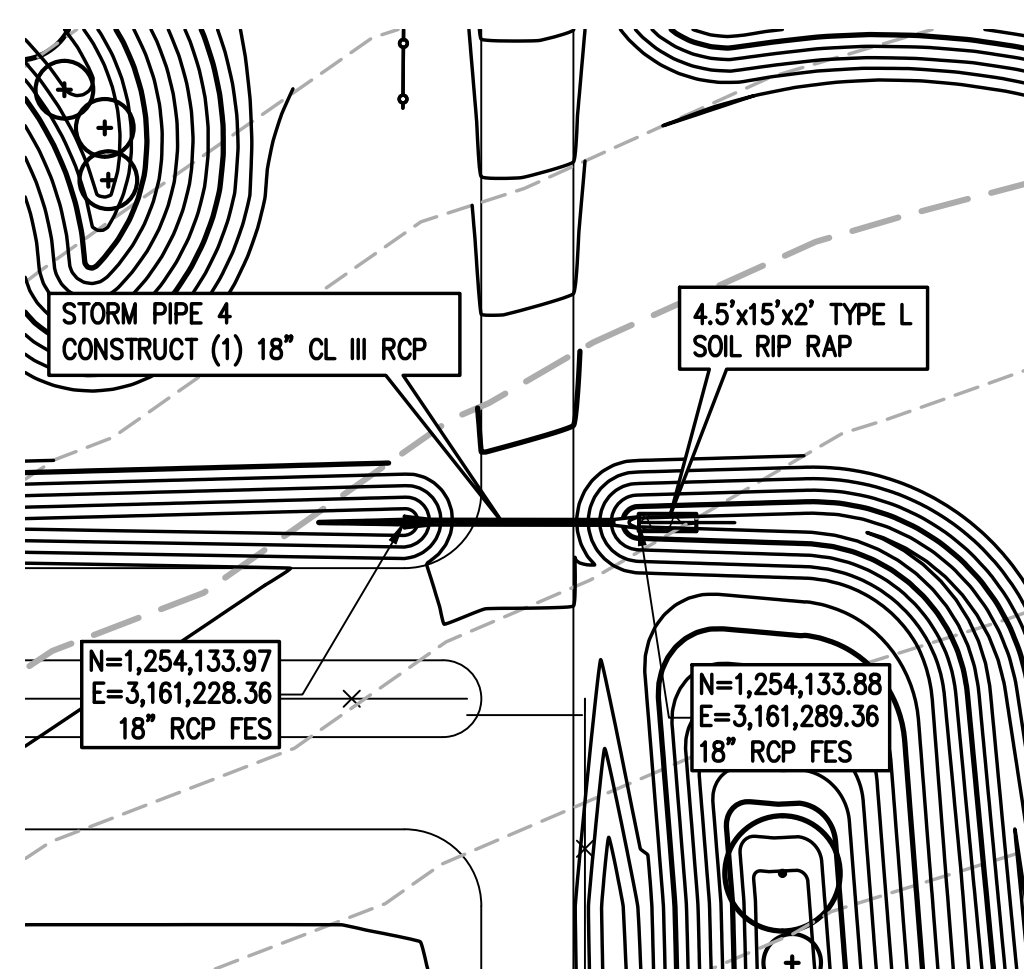
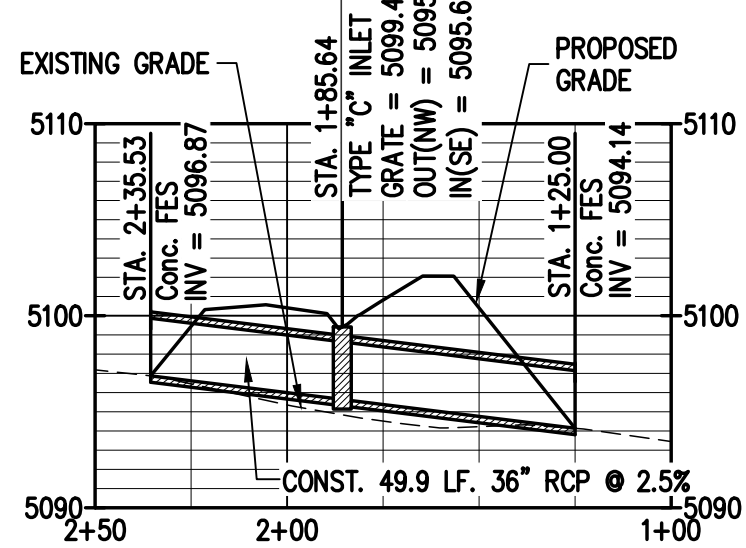
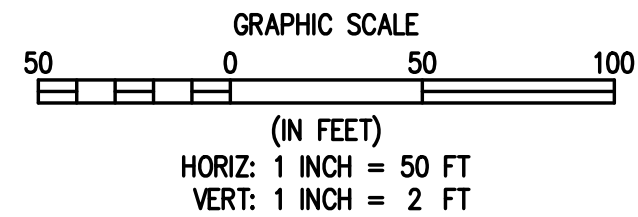
1 STORM PIPE 1 PLAN & PROFILE



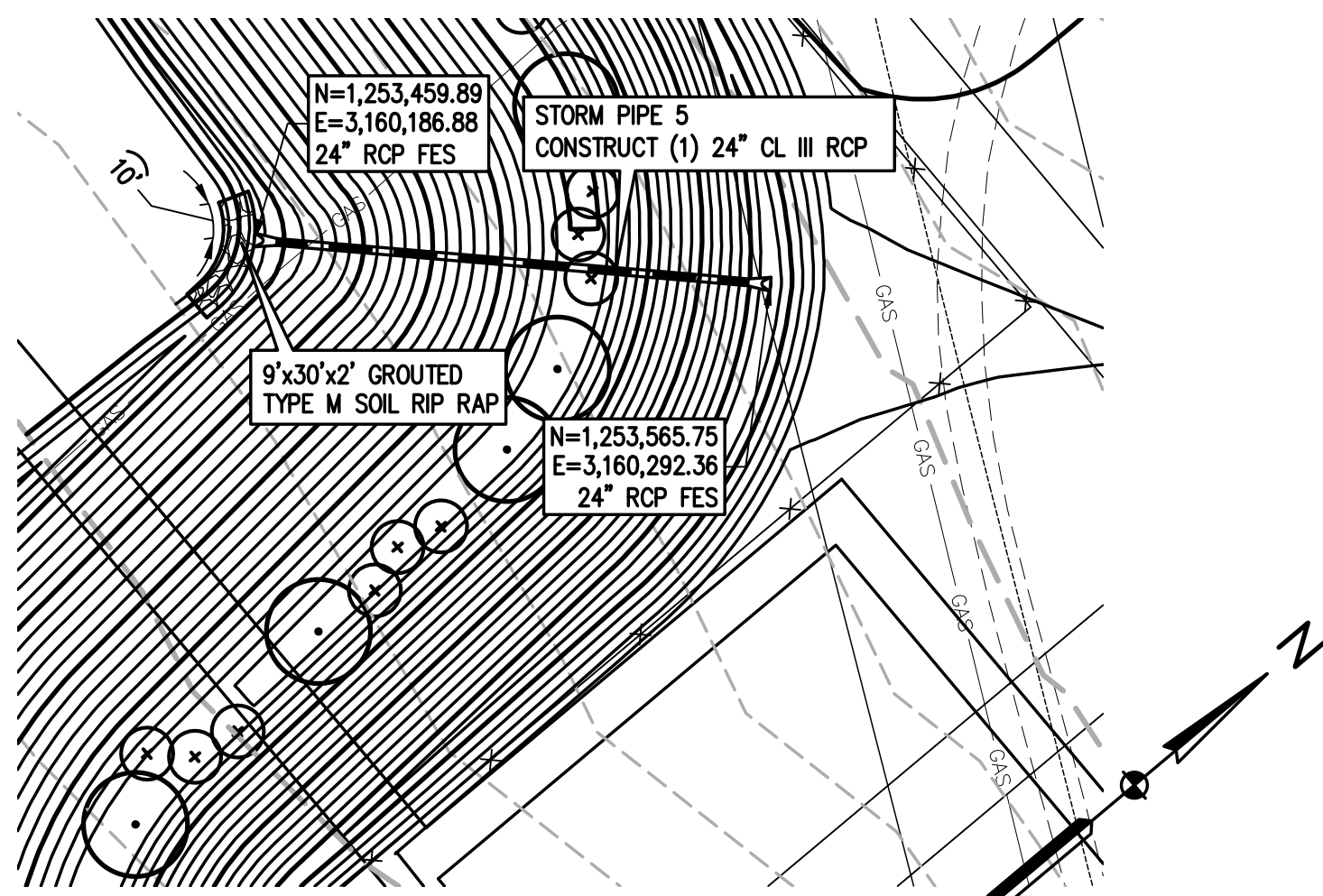
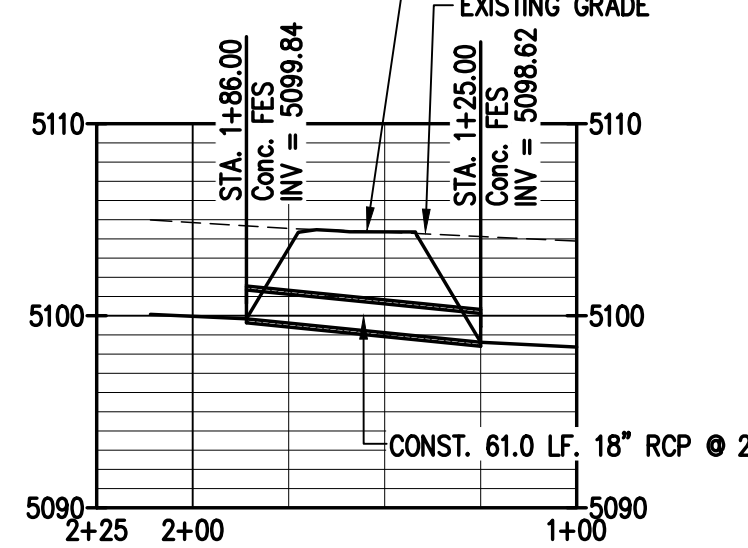
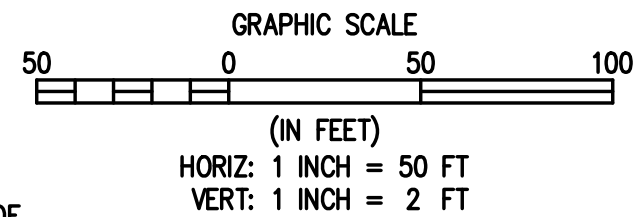
2 STORM PIPE 2 PLAN & PROFILE



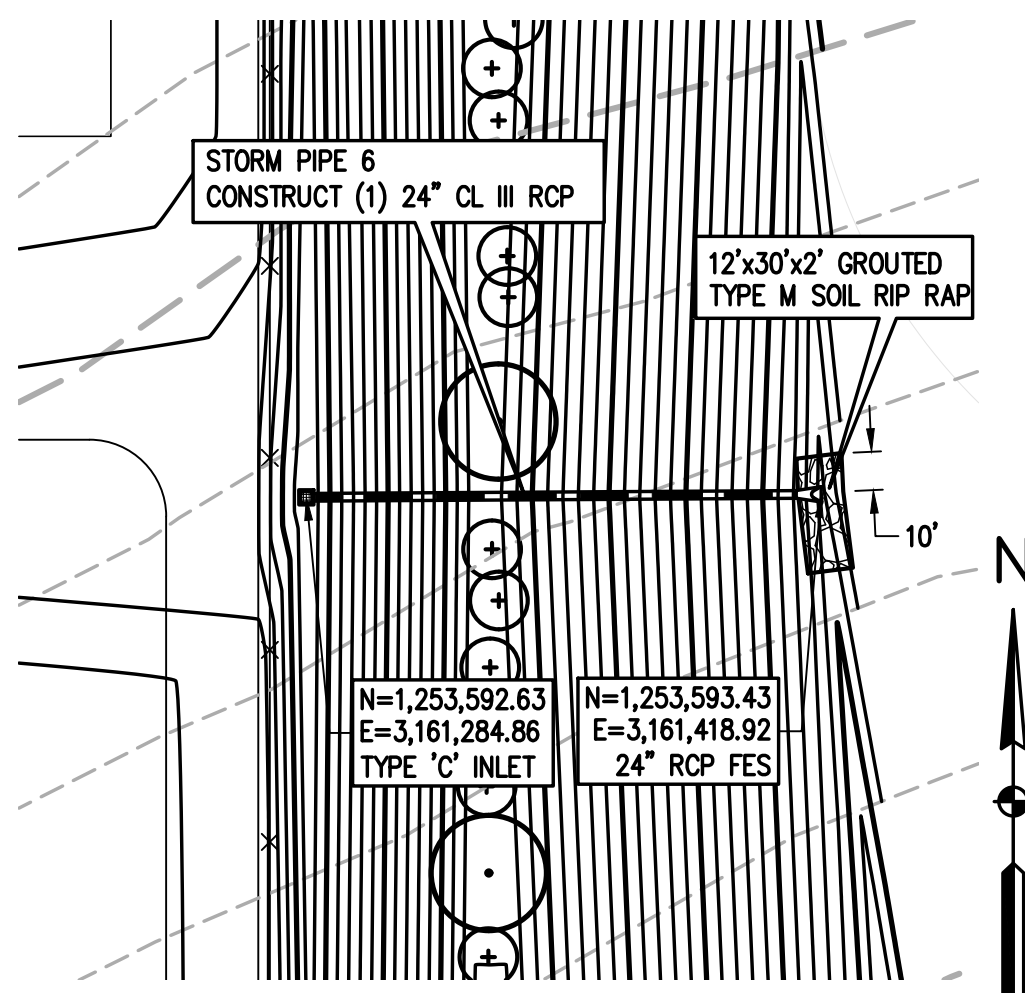
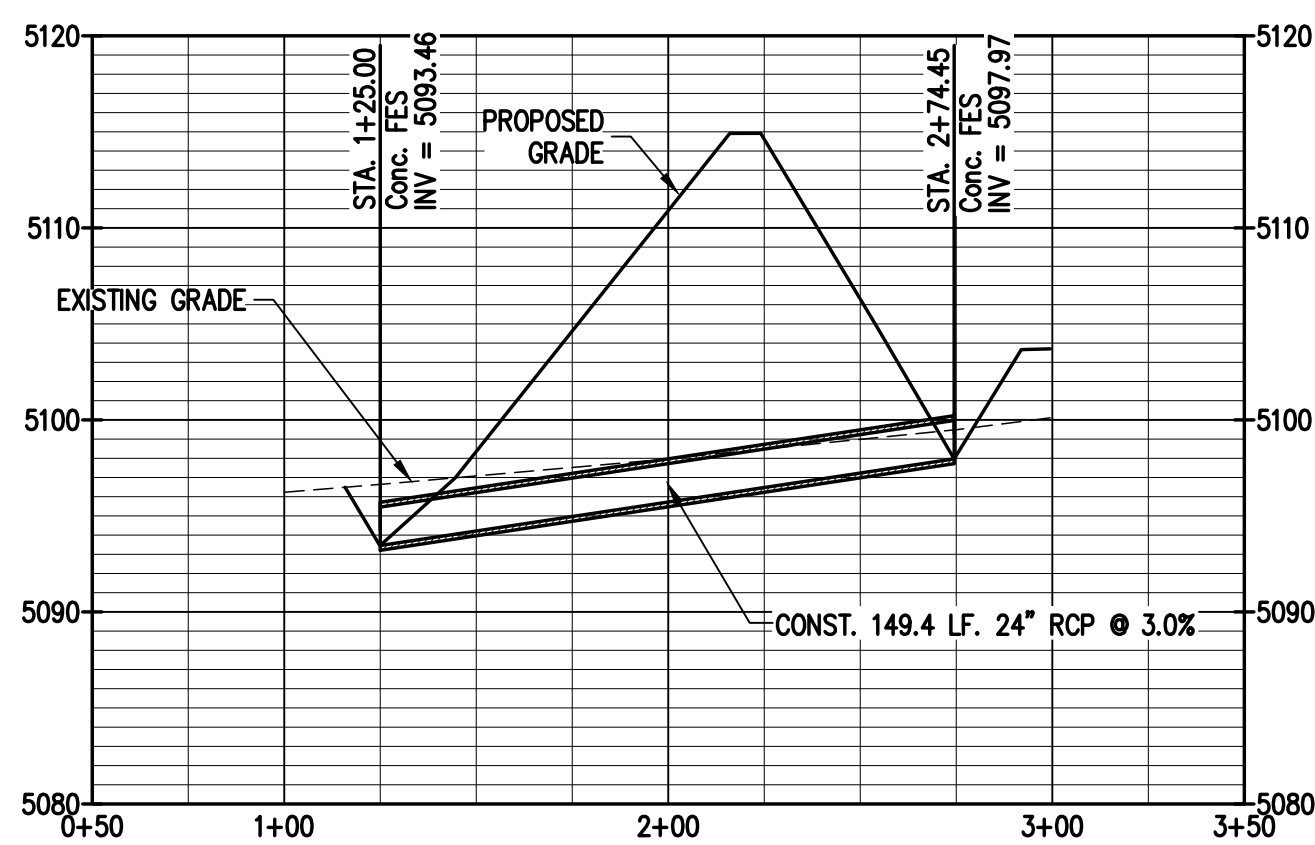
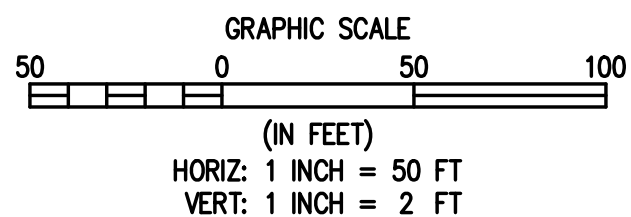
3 STORM PIPE 3 PLAN & PROFILE



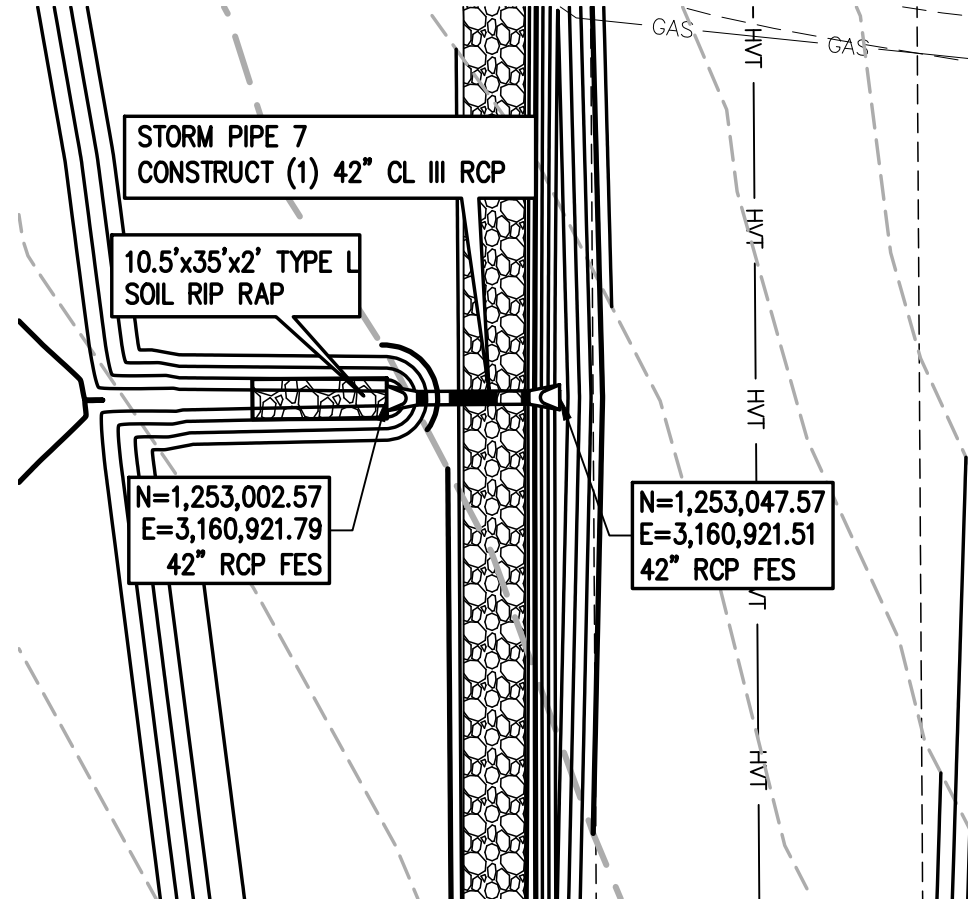
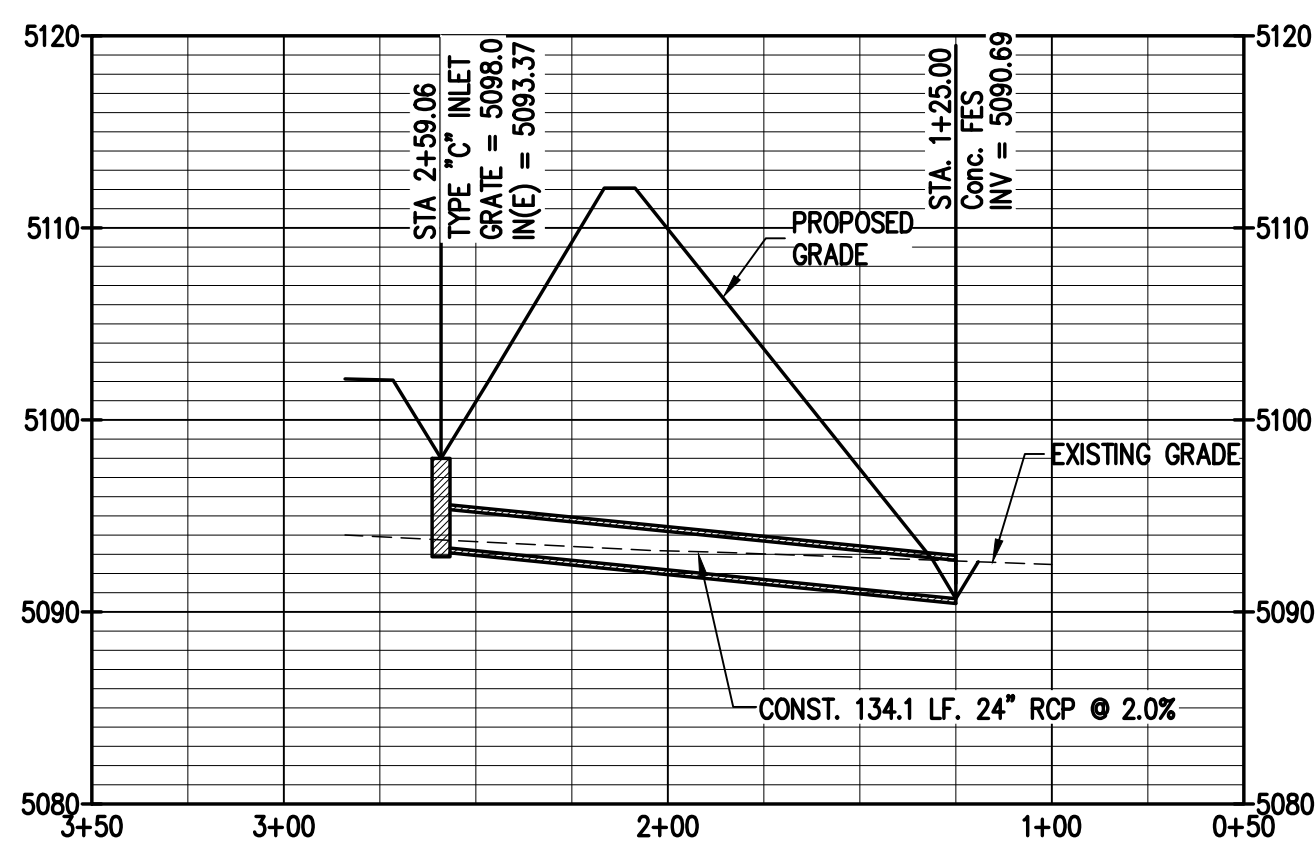
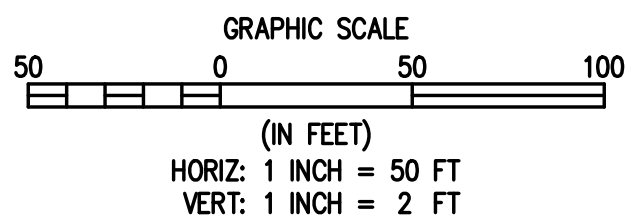
4 STORM PIPE 4 PLAN & PROFILE



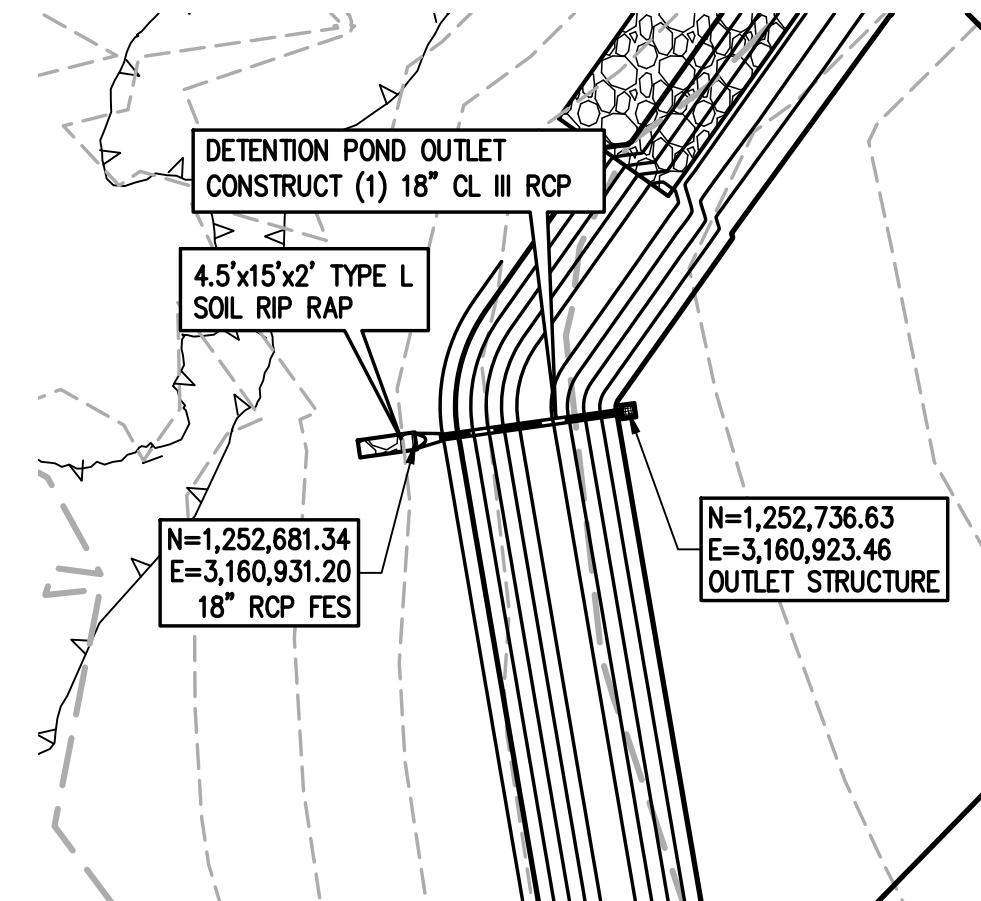
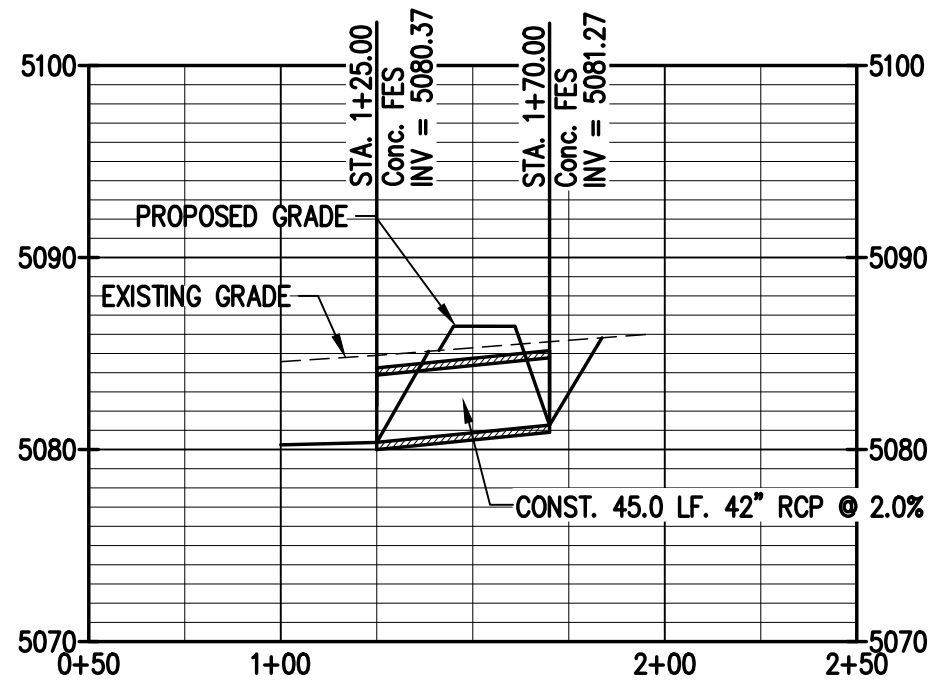
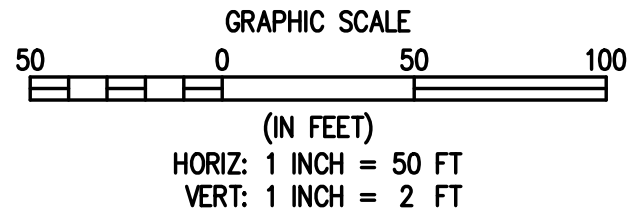
5 STORM PIPE 5 PLAN & PROFILE



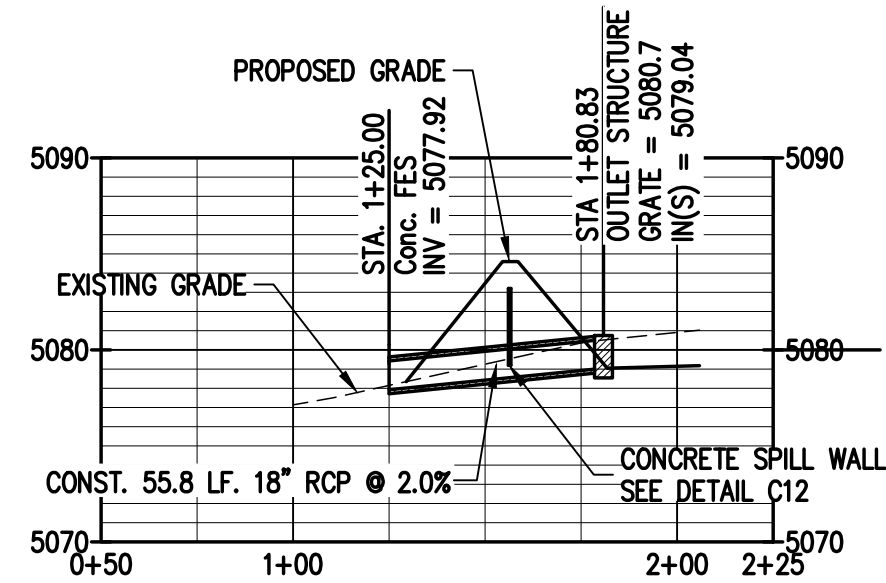
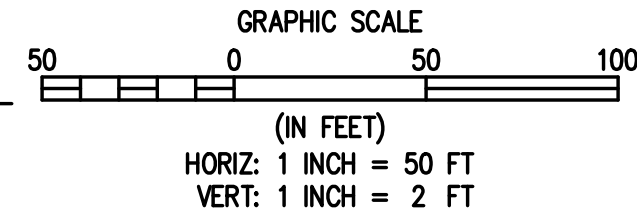
6 STORM PIPE 6 PLAN & PROFILE



7 STORM PIPE 7 PLAN & PROFILE



8 DETENTION POND OUTLET PLAN & PROFILE



NOTES:

1. SEED/MULCH/AND SOIL RETENTION BLANKET (SRB) REQUIRED ON ALL DISTURBED DITCH AREAS.
2. PROVIDED CULVERT LENGTHS ARE FROM END OF FLARED END SECTION TO FLARED END SECTION. PROVIDED CULVERT INVERTS ARE FLOWLINE AT END OF FLARED END SECTIONS. CONTRACTOR TO PLACE FLARED END SECTIONS AT THE SAME SLOPE AS CULVERT PIPES.

BASELINE

Engineering - Planning - Surveying

1650 FORD STREET • GOLDEN, COLORADO 80401
P. 303.940.9966 • F. 303.940.9968 • www.baselinecorp.com

DESIGNED BY JDD
DRAWN BY JDD
CHECKED BY NJN

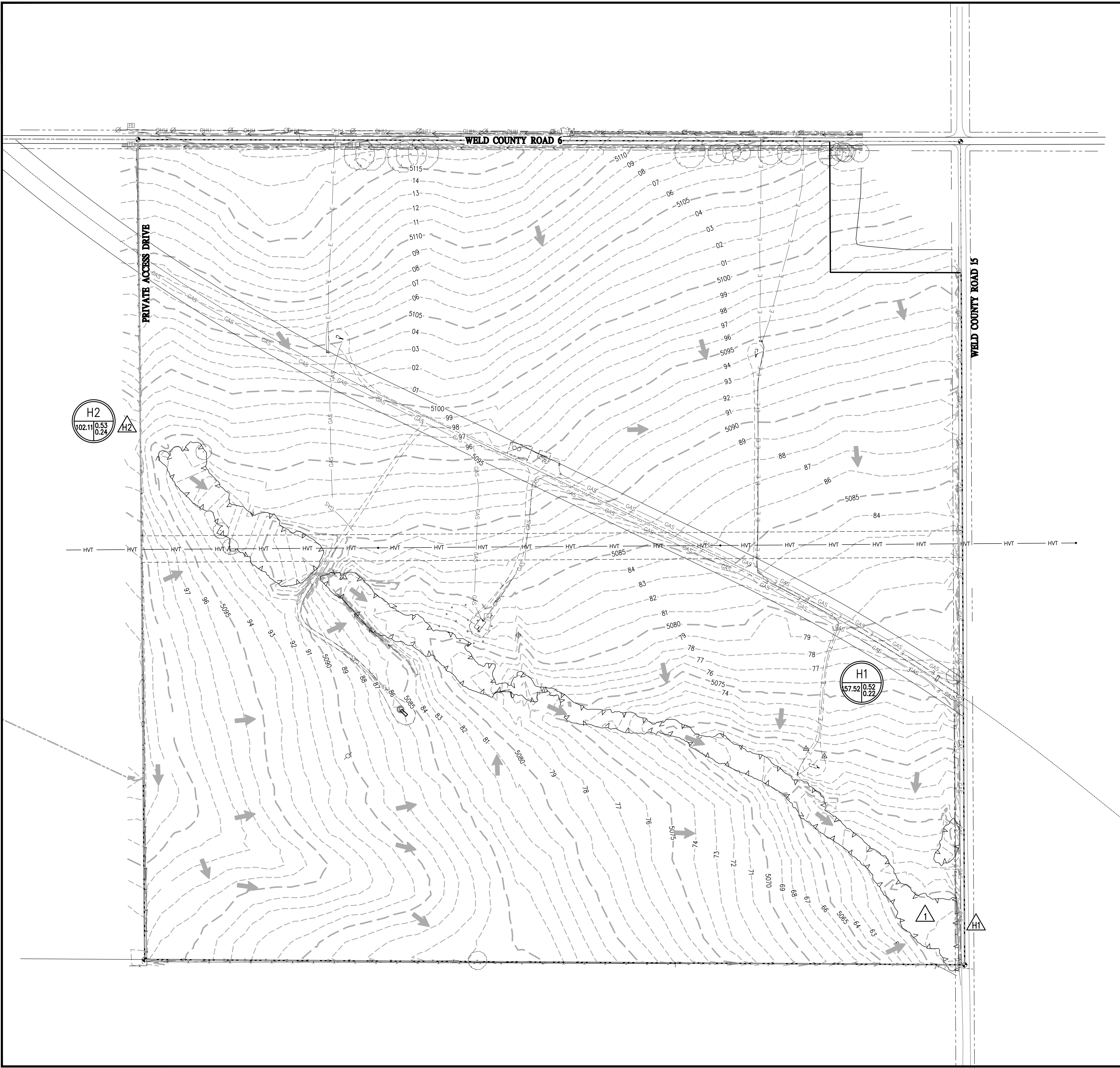
DATE
PREPARED BY
REVISION DESCRIPTION

WELD
BADGER CENTRAL GATHERING FACILITY
NE QUARTER SEC. 30, T1N, R67W
STORM PLAN & PROFILE

PREPARED UNDER THE DIRECT SUPERVISION OF
PRELIMINARY
NOT FOR CONSTRUCTION
FOR AND ON BEHALF OF
BASELINE CORPORATION
INITIAL SUBMITTAL XX/XX/XX
DRAWING SIZE 24" x 36"
SURVEY FIRM SURVEY DATE XX/XX/XX
JOB NO. CXXXXX
DRAWING NAME EXTING7W30-01 CGF HORIZ CONTROL.dwg
SHEET 9 OF 12

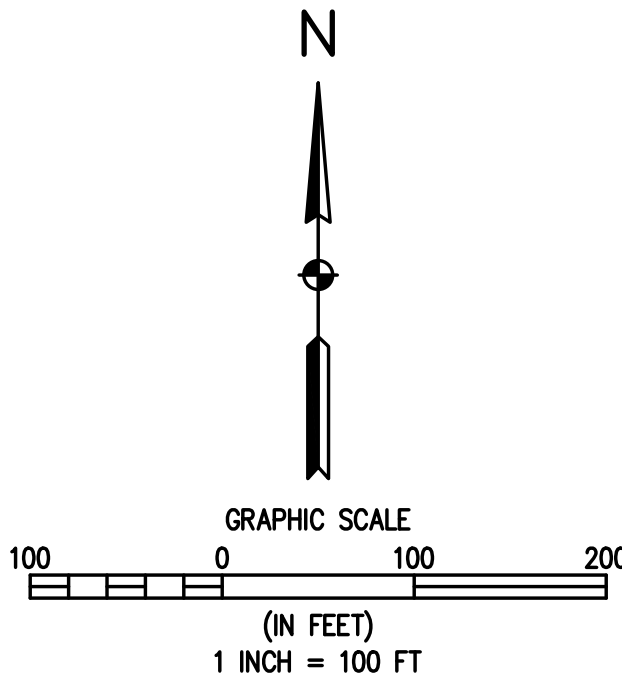
C9

M:\co - Well Head Staking\EXT1N67W30-01\Drawings\EXT1N67W30-01 CGF GRADING.dwg, 3/28/2018 11:29:11 AM, Joy Davis



DRAINAGE PLAN LEGEND

- DEVELOPED DRAINAGE BASIN BOUNDARY
- HISTORIC DRAINAGE BASIN BOUNDARY
- EXISTING MINOR CONTOUR
- EXISTING MAJOR CONTOUR
- PROPOSED MINOR CONTOUR
- PROPOSED MAJOR CONTOUR
- FLOODPLAIN
- 100-YR WATER SURFACE ELEVATION
- FLOW DIRECTION, TYPICALLY ON PAVED SURFACES
- FLOW DIRECTION, TYPICALLY IN GRASSED SWALE
- FLOW DIRECTION, TYPICALLY IN FLOWLINE
- HIGH OR LOW POINT IN PAVING
- DESIGN POINT DESIGNATION
- A = BASIN DESIGNATION
- B = BASIN AREA (ac)
- C = 100-YR C-FACTOR
- D = 10-YR C-FACTOR



HISTORIC DRAINAGE SUMMARY

BASIN ID	TOTAL AREA (ACRES)	C ₁	C ₂	C ₃	% IMPERVIOUSNESS	T _c (MINUTES)	Q ₁ (CFS)	Q ₂ (CFS)	Q ₃ (CFS)
H1	157.52	0.08	0.22	0.52	3%	136.9	8.95	31.44	123.86
H2	102.11	0.10	0.24	0.53	6%	82.1	11.17	32.29	118.85

DESIGNED BY JDD
DRAWN BY JDD
CHECKED BY NJN

REVISION DESCRIPTION	DATE	PREPARED BY

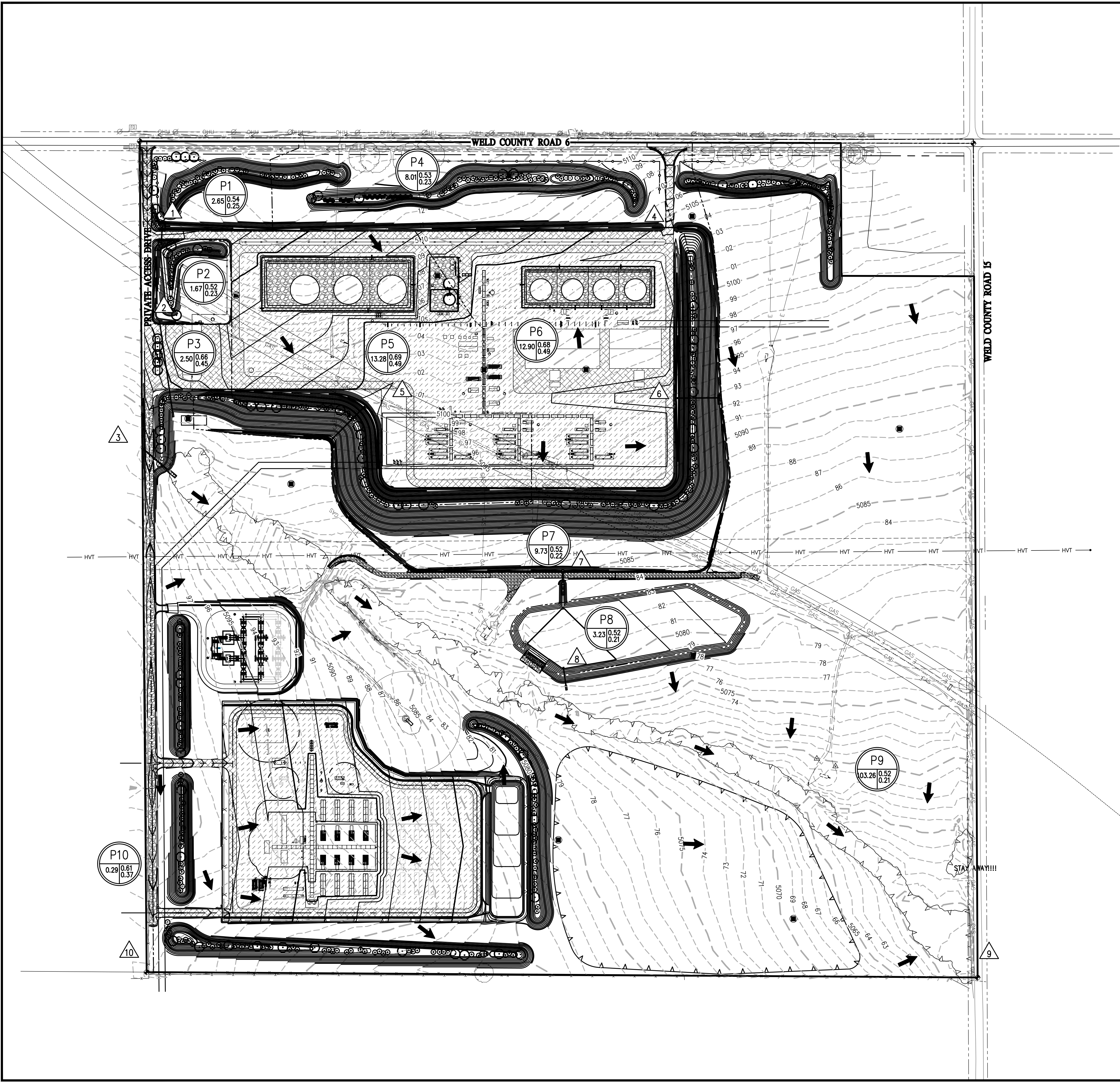
ELEVATION MIDSTREAM, LLC.
BADGER CENTRAL GATHERING FACILITY
NE QUARTER SEC. 30, T1N, R67W
HISTORIC DRAINAGE PLAN

PREPARED UNDER THE DIRECT SUPERVISION OF

**PRELIMINARY
NOT FOR
CONSTRUCTION**

FOR AND ON BEHALF OF	BASELINE CORPORATION
INITIAL SUBMITTAL	XX/XX/XX
DRAWING SIZE	24" X 36"
SURVEY FIRM	SURVEY DATE
SURVEY FIRM	XX/XX/XX
JOB NO.	COXXXX
DRAWING NAME	EXT1N67W30-01 CGF GRADING.dwg
SHEET	10 OF 12

M:\co - Well Head Staking\EXTING7W30-01\Drawings\EXTING7W30-01 CGF GRADING.dwg, 3/28/2018 11:29:22 AM, Jay Davis



Drainage Plan Legend

- Developed Drainage Basin Boundary
- Historic Drainage Basin Boundary
- Existing Minor Contour
- Existing Major Contour
- Proposed Minor Contour
- Proposed Major Contour
- Floodplain
- 100-Yr Water Surface Elevation
- Flow Direction, Typically on Paved Surfaces
- Flow Direction, Typically in Grassed Swale
- Flow Direction, Typically in Flowline
- High or Low Point in Paving
- Design Point Designation
- A = Basin Designation
- B = Basin Area (ac)
- C = 100-Yr C-Factor
- D = 10-Yr C-Factor

Developed Drainage Summary

Basin ID	Total Area (Acres)	C ₁	C ₂	C ₃	% Imperviousness	T _c (Minutes)	Q ₁ (CFS)	Q ₂ (CFS)	Q ₃ (CFS)
P1	2.65	0.11	0.25	0.54	6%	30.0	0.60	1.66	5.99
P2	1.67	0.08	0.23	0.52	4%	22.7	0.34	1.12	4.31
P3	2.50	0.35	0.45	0.66	34%	43.8	1.44	2.25	5.50
P4	8.01	0.09	0.23	0.53	5%	44.1	1.22	3.73	14.05
P5	13.28	0.40	0.49	0.69	40%	28.0	11.53	17.22	39.88
P6	12.90	0.39	0.49	0.68	39%	44.6	8.25	12.40	28.97
P7	9.73	0.08	0.22	0.52	3%	18.8	2.05	7.05	27.59
P8	3.23	0.07	0.21	0.52	2%	38.9	0.40	1.50	6.00
P9	103.26	0.07	0.22	0.52	2%	78.2	8.34	30.34	120.81
P10	0.29	0.25	0.37	0.61	23%	9.2	0.27	0.48	1.33

Baseline

Engineering - Planning - Surveying

1950 Ford Street • Golden, Colorado 80401

P. 303.940.9966 • F. 303.940.9968 • www.baselinecorp.com

DESIGNED BY

JDD

DRAWN BY

JDD

CHECKED BY

NJN

DATE

PREPARED BY

REVISION DESCRIPTION

ELEVATION MIDSTREAM, LLC.

BADGER CENTRAL GATHERING FACILITY

NE QUARTER SEC. 30, T1N, R67W

DEVELOPED DRAINAGE PLAN

FOR AND ON BEHALF OF

BASILINE CORPORATION

INITIAL SUBMITTAL

XX/XX/XX

DRAWING SIZE

24" X 36"

SURVEY FIRM

SURVEY DATE

XX/XX/XX

JOB NO.

COXXXX

DRAWING NAME

EXTING7W30-01 CGF GRADING.dwg

SHEET

11

OF

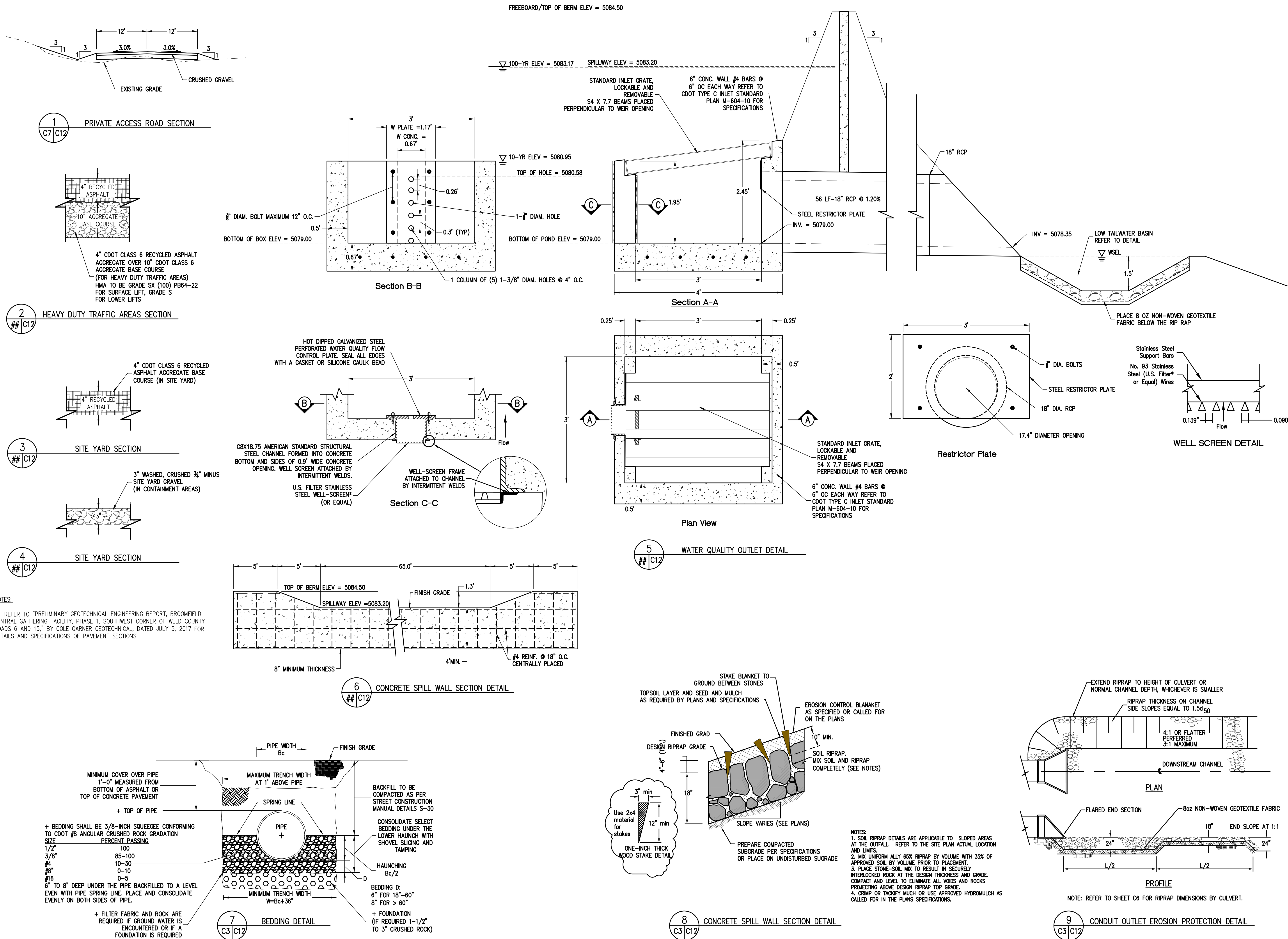
12

PREPARED UNDER THE DIRECT SUPERVISION OF

PRELIMINARY NOT FOR CONSTRUCTION

C11

M:\co - Well Head Staking\EXTING7W30-01\Drawings\EXTING7W30-01 CGF COVER AND DETAILS.dwg, 3/28/2018 11:29:45 AM, Joy Davis



BASELINE
Engineering - Planning - Surveying
1650 FORD STREET • GOLDEN, COLORADO 80401
P. 303.940.9966 • F. 303.940.9968 • www.baselinecorp.com

DESIGNED BY JDD
DRAWN BY JDD
CHECKED BY NJN

DATE
PREPARED BY
REVISION DESCRIPTION

WELD
BADGER CENTRAL GATHERING FACILITY
NE QUARTER SEC. 30, T1N, R67W
DETAIL SHEET

FOR AND ON BEHALF OF
BASELINE CORPORATION
INITIAL SUBMITTAL XX/XX/XX
DRAWING SIZE 24" X 36"
SURVEY FIRM XX/XX/XX
SURVEY DATE XX/XX/XX
JOB NO. C00000
DRAWING NAME
EXTING7W30-01 CGF COVER AND DETAILS.dwg
SHEET 12 OF 12
C12

ELEVATION MIDSTREAM, LLC.

PREPARED UNDER THE DIRECT SUPERVISION OF

**PRELIMINARY
NOT FOR
CONSTRUCTION**