

Great Western Operating Company, LLC

Location Colorado
Field Wattenburg
Installation Seltzer
Slot Slot E14 - Seltzer LD 21-032HN
Well Seltzer LD 21-032HN
Wellbore Seltzer LD 21-032HN (PWB)

Scale 1 cm = 400 ft

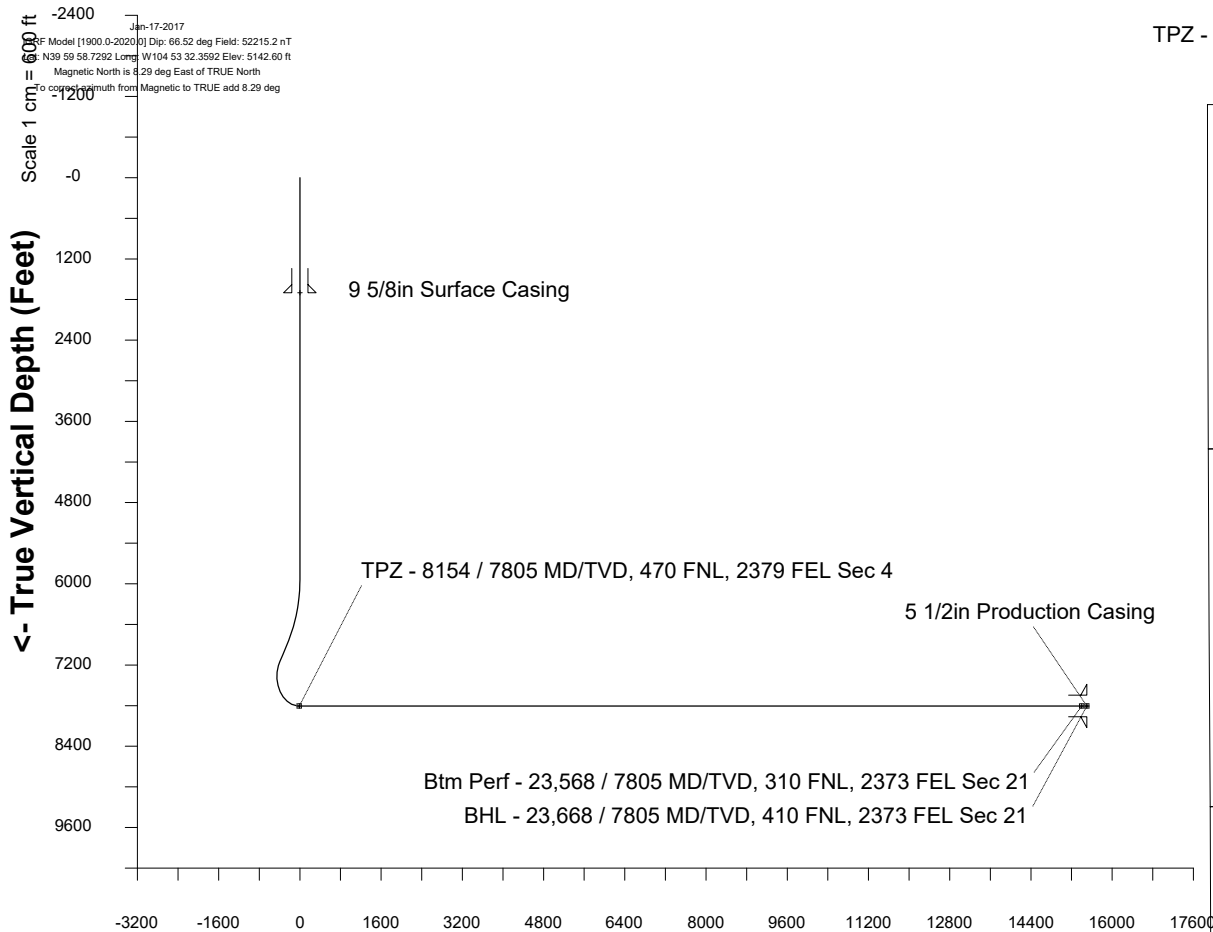
East (Feet) ->

-7200 -6400 -5600 -4800 -4000 -3200 -2400 -1600 -800 0 800 1600 2400 3200 4000

Created by	admin
Date plotted	30-Apr-2018
Plot reference is Seltzer LD 21-032HN (PWB).	
Ref wellpath is Seltzer LD 21-032HN (PWP#1).	
Coordinates are in Feet reference Slot E14 - Seltzer LD 21-032HN.	
True Vertical Depths are reference Rig Datum.	
Measured Depths are reference Rig Datum.	
Rig Datum: Planned Datum #1	
Rig Datum to Mean Sea Level: 5162.60 ft.	
Plot North is aligned to TRUE North.	

Scale 1 cm = 600 ft

<- True Vertical Depth (Feet)



Scale 1 cm = 800 ft

Vertical Section (Feet) ->

Azimuth 180.37 with reference 0.00 N, 0.00 E from Slot E14 - Seltzer LD 21-032HN

WELL PROFILE DATA

Point	MD	Inc	Azi	TVD	North	East	deg/100ft	V. Sect
Tie on	0.00	0.00	0.00	0.00	S 0.00	W 0.00		-0.00
KOP	5941.40	0.00	350.42	5941.40	S 0.00	W 0.00	0.00	-0.00
End of Build	6941.40	30.00	350.42	6896.33	N 252.30	W 42.60	3.00	-252.02
End of Hold	7234.15	30.00	350.42	7149.86	N 396.64	W 66.97	0.00	-396.19
Target TPZ - ... Sec 4	8153.76	90.00	179.90	7805.00	N 13.11	W 128.60	13.00	-12.27
Target Btm Pe... Sec 21	23568.19	90.00	179.90	7805.00	S 15401.29	W 101.20	0.00	15401.62
End of Turn	23568.98	90.00	180.00	7805.00	S 15402.07	W 101.20	13.00	15402.41
T.D. & Target BHL... 21	23668.37	90.00	180.00	7805.00	S 15501.47	W 101.20	0.00	15501.80

TPZ - 8154 / 7805 MD/TVD, 470 FNL, 2379 FEL Sec 4

Sec 4, T1S, R67W

Sec 9, T1S, R67W

Sec 16, T1S, R67W

Btm Perf - 23,568 / 7805 MD/TVD, 310 FNL, 2373 FEL Sec 21

BHL - 23,668 / 7805 MD/TVD, 410 FNL, 2373 FEL Sec 21

Sec 21, T1S, R67W

<- North(Feet)

Scale 1 cm = 600 ft