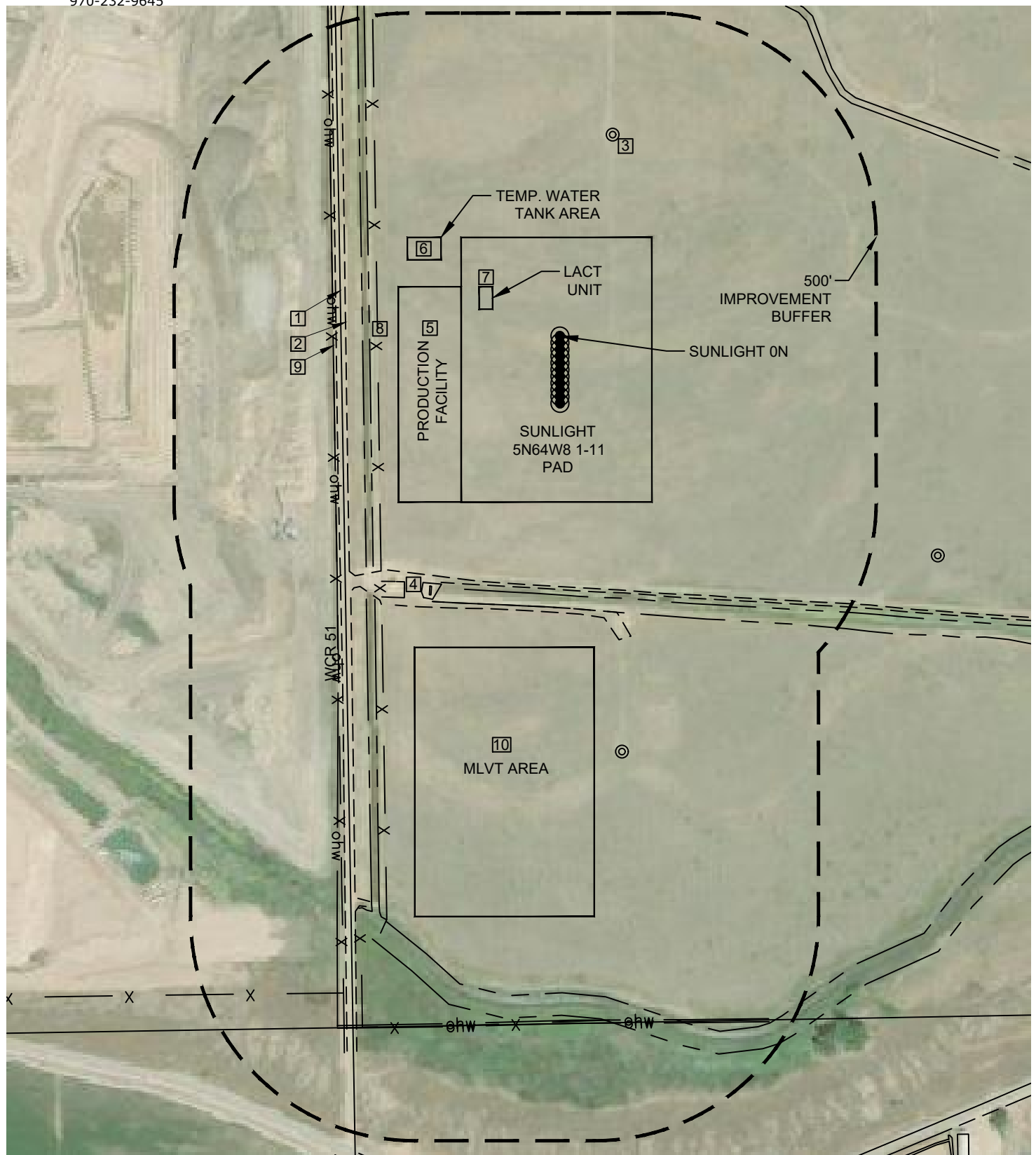




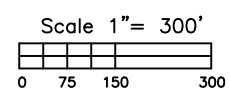
Washburn Land Surveying  
www.WashburnSurveying.com  
970-232-9645

# LOCATION DRAWING SUNLIGHT 5N64W8 1-11 PAD

SECTION: 8  
TOWNSHIP: 5N  
RANGE: 64W  
6TH P.M.  
WELD COUNTY, CO



- LEGEND:
- ohw ——— OVERHEAD UTILITY LINE
  - g ——— GAS LINE
  - - - - - EDGE OF ROAD/ACCESS
  - PROPERTY LINE
  - - - - - DITCH
  - X ——— FENCE LINE
  - ⊙ EXISTING WELL





Washburn Land Surveying  
www.WashburnSurveying.com  
970-232-9645

## LOCATION DRAWING SUNLIGHT 5N64W8 1-11 PAD

SECTION: 8  
TOWNSHIP: 5N  
RANGE: 64W  
6TH P.M.  
WELD COUNTY, CO

### IMPROVEMENTS

(MEASUREMENTS ARE FROM THE PROPOSED SUNLIGHT ON WELL LOCATION)

- ① PROPERTY LINE: 488' W, 1533' S
- ② ACCESS: 477' W (WCR 51), 557' S & 604' S
- ③ EXISTING WELL: 464' NE (PAULINE 2),  
& 937' SE (PAULINE 1)
- ④ EXISTING GAS FACILITIES: 612' SW
- ⑤ PROPOSED PRODUCTION FACILITIES: 220' W
- ⑥ TEMPORARY WATER TANK AREA (50' X 75'): 315' NW
- ⑦ PERMANENT OIL METERING AREA (50' X 30'): 162' NW
- ⑧ DITCH: 425' W, 576' S & 1361' SW
- ⑨ ABOVE GROUND UTILITY: 505' W & 1525' S
- ⑩ MLVT AREA: 694' S