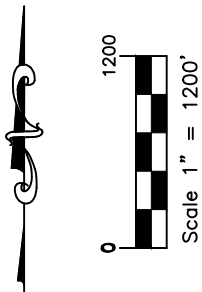
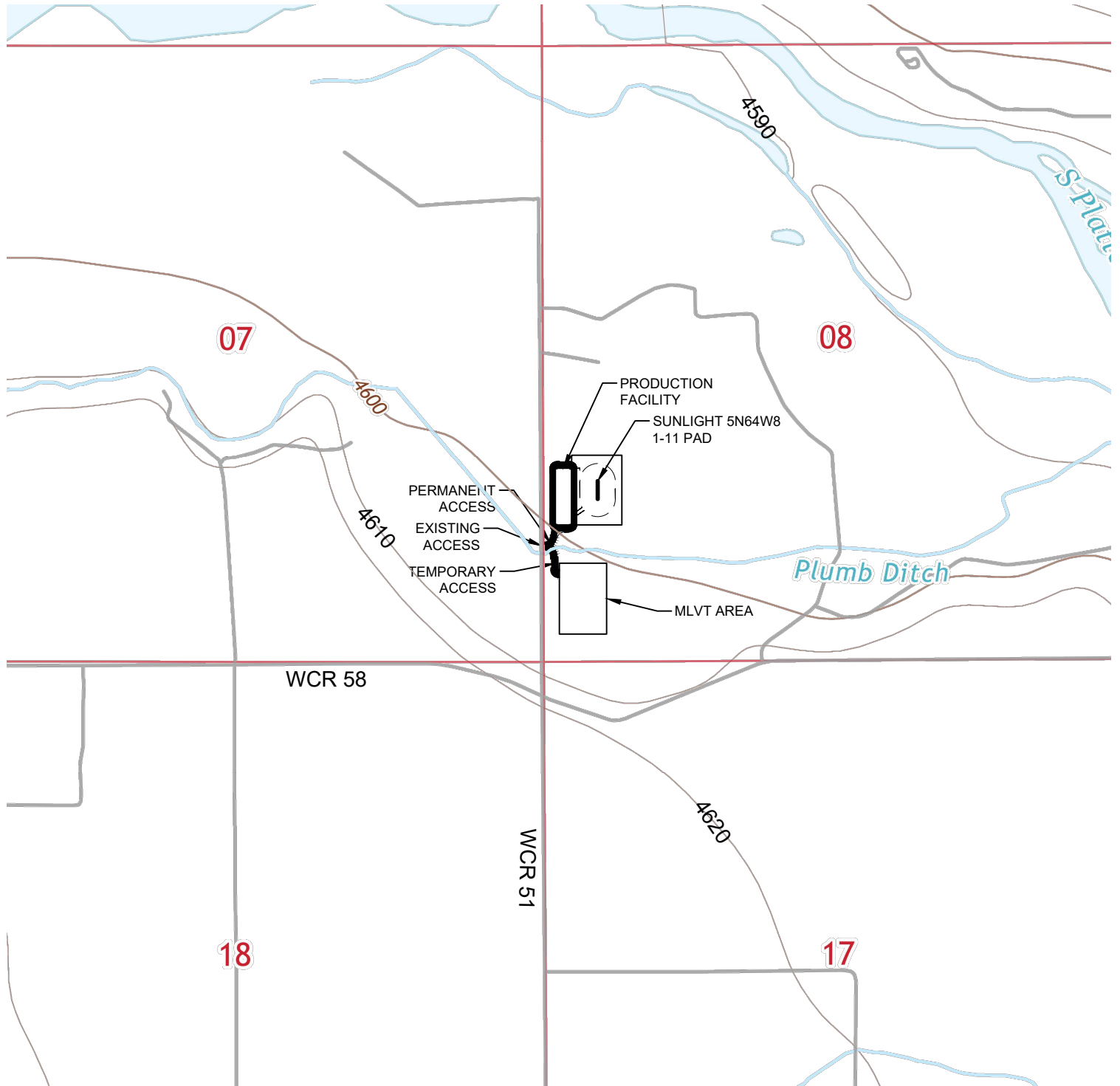




Washburn Land Surveying  
www.WashburnSurveying.com  
970-232-9645

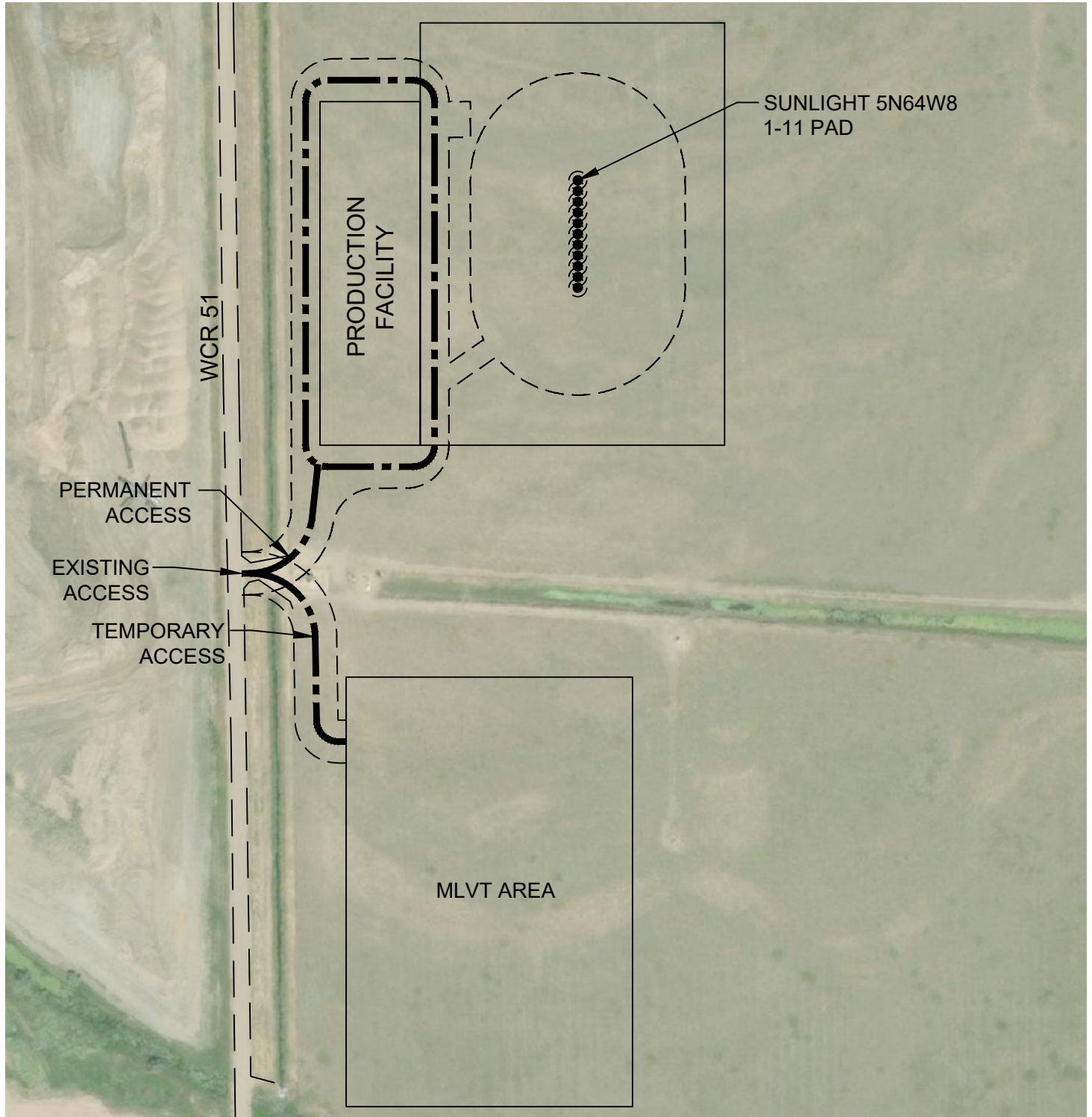
# ACCESS ROAD MAP SUNLIGHT 5N64W8 1-11 PAD

SECTION: 8  
TOWNSHIP: 5N  
RANGE: 64W  
6TH P.M.  
WELD COUNTY, CO



# ACCESS ROAD MAP SUNLIGHT 5N64W8 1-11 PAD

SECTION: 8  
TOWNSHIP: 5N  
RANGE: 64W  
6TH P.M.  
WELD COUNTY, CO



## DIRECTIONS:

FROM THE INTERSECTION OF WELD COUNTY ROAD 51 AND WELD COUNTY ROAD 58,  
THENCE NORTH ON WELD COUNTY ROAD 51 FOR 1,276 FEET TO AN EXISTING ACCESS TO THE EAST.  
THENCE 200 FEET NORTHEASTLY TO THE PROPOSED PRODUCTION FACILITY OF THE WELL PAD.