



May 1st 2018

Colorado Oil and Gas Conservation Commission
1120 Lincoln Street, Suite 801
Denver, CO 80203

RE: Proposed Drilling and Spacing Unit
Seltzer LD 21-039HN
Niobrara New Drill
NWNE Sec. 4, Township 1S, and Range 67W
Adams County, Colorado

Dear Director,

Great Western Operating Company, LLC (Great Western) is planning to drill the above captioned well in accordance with the provisions of Colorado Oil and Gas Conservation Commission (COGCC) Rule 318A.e.

Great Western's Proposed Drilling and Spacing Unit:

Township 1S, Range 67W (Adams County):

Section 4: E2
Section 9: E2
Section 16: E2
Section 21: N2NE

Total Acres: 1040 ac

The 30 day notification time period has passed and we have not yet received any objections to such well locations or proposed spacing unit, therefore Great Western hereby requests the Director to approve the above mentioned well. Great Western respectfully requests the COGCC review the enclosed map illustrating the Proposed Drilling and Spacing Unit.

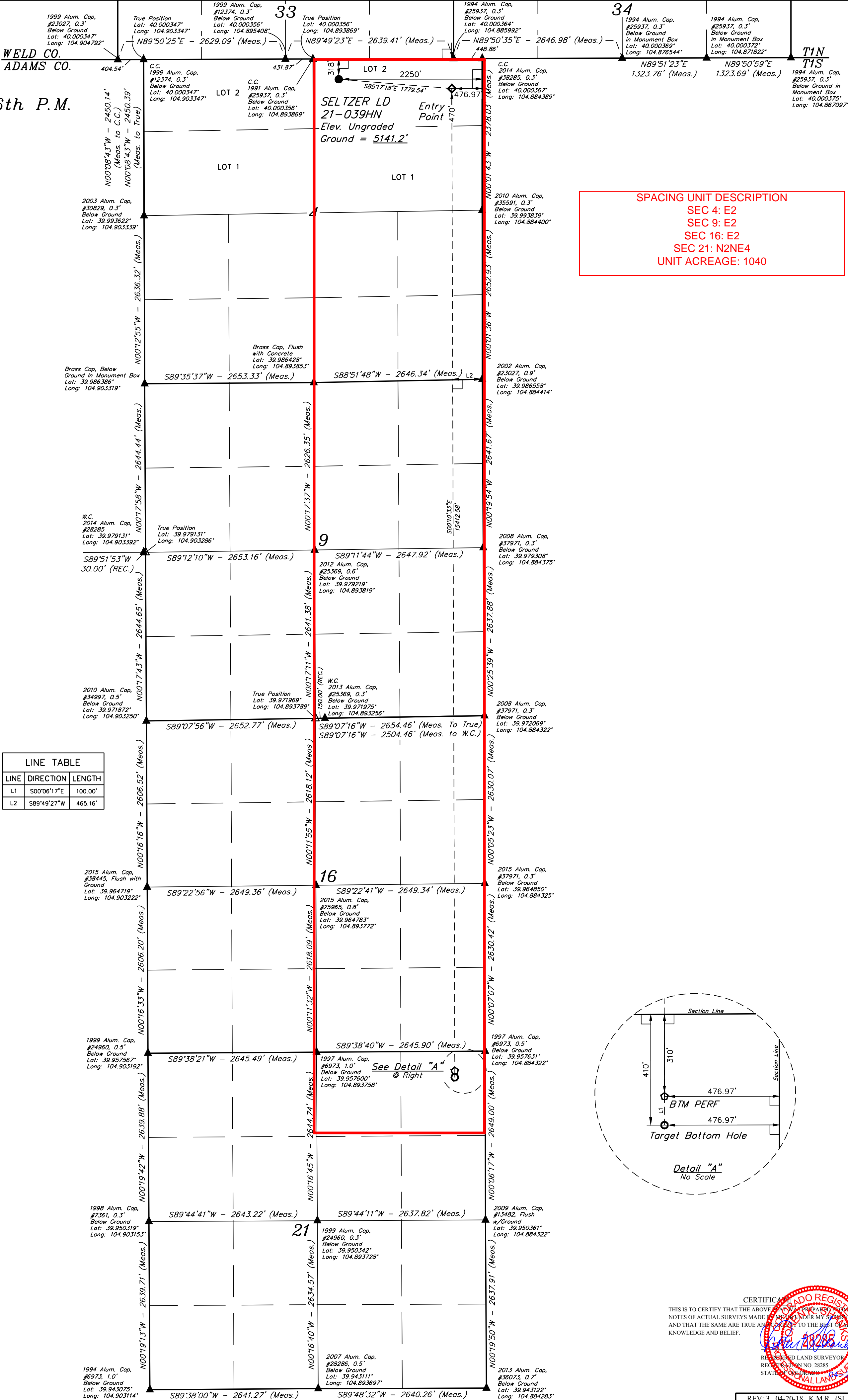
Respectfully,

Natalie Svendsen
Regulatory Analyst
Great Western Operating Company, LLC

LEGEND:

- 90° SYMBOL
- PROPOSED WELLHEAD.
- TARGET BOTTOM HOLE.
- ENTRY POINT.
- BTM PERF.
- SECTION CORNERS LOCATED. (NAD 83)
- SECTION CORNERS RE-ESTABLISHED. (Not Set on Ground.) (NAD 83)

T1S, R67W, 6th P.M.



BASIS OF BEARINGS
BASIS OF BEARINGS IS A G.P.S. OBSERVATION
BASIS OF ELEVATION
BENCHMARK JR 53 5026 LOCATED IN THE SW 1/4 SE 1/4 OF SECTION 18, T1N, R68W, 6th P.M., TAKEN FROM 1988 PUBLISHED DATUM BY THE UNITED STATES DEPARTMENT OF THE INTERIOR, GEOLOGICAL SURVEY AS BEING 5028 FEET.

UELS, LLC
Corporate Office * 85 South 200 East
Vernal, UT 84078 * (435) 789-1017

UINTAH
ENGINEERING & LAND SURVEYING

PDOP = 1.4			
NAD 83 (SURFACE LOCATION)	NAD 83 (ENTRY POINT)	NAD 83 (BTM PERF)	NAD 83 (TARGET BOTTOM HOLE)
LATITUDE = 39°59'58.14" (39.999484)	LATITUDE = 39°59'56.67" (39.999075)	LATITUDE = 39°57'24.39" (39.956775)	LATITUDE = 39°57'23.40" (39.956500)
LONGITUDE = 104°53'32.72" (104.892421)	LONGITUDE = 104°53'09.94" (104.886094)	LONGITUDE = 104°53'09.68" (104.886022)	LONGITUDE = 104°53'09.68" (104.886022)
NAD 27 (SURFACE LOCATION)	NAD 27 (ENTRY POINT)	NAD 27 (BTM PERF)	NAD 27 (TARGET BOTTOM HOLE)
LATITUDE = 39°59'58.20" (39.999500)	LATITUDE = 39°59'56.72" (39.999089)	LATITUDE = 39°57'24.43" (39.956792)	LATITUDE = 39°57'23.46" (39.956517)
LONGITUDE = 104°53'30.80" (104.891890)	LONGITUDE = 104°53'08.02" (104.885561)	LONGITUDE = 104°53'07.77" (104.885492)	LONGITUDE = 104°53'07.77" (104.885492)

GREAT WESTERN OPERATING COMPANY

SELTZER LD 21-039HN
NW 1/4 NE 1/4, SECTION 4, T1S, R67W, 6th P.M.
ADAMS COUNTY, COLORADO

SURVEYED BY	JAMES FRESHWATER, N.W.	04-19-18	SCALE
DRAWN BY	K.B.	12-30-16	1" = 1000'

WELL LOCATION PLAT