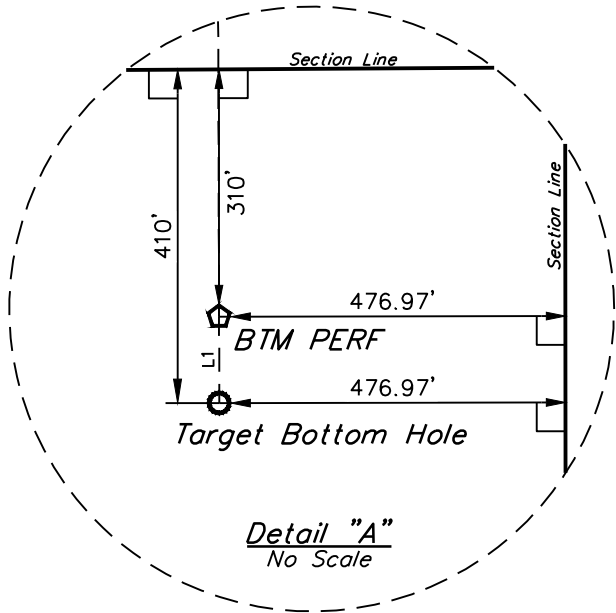
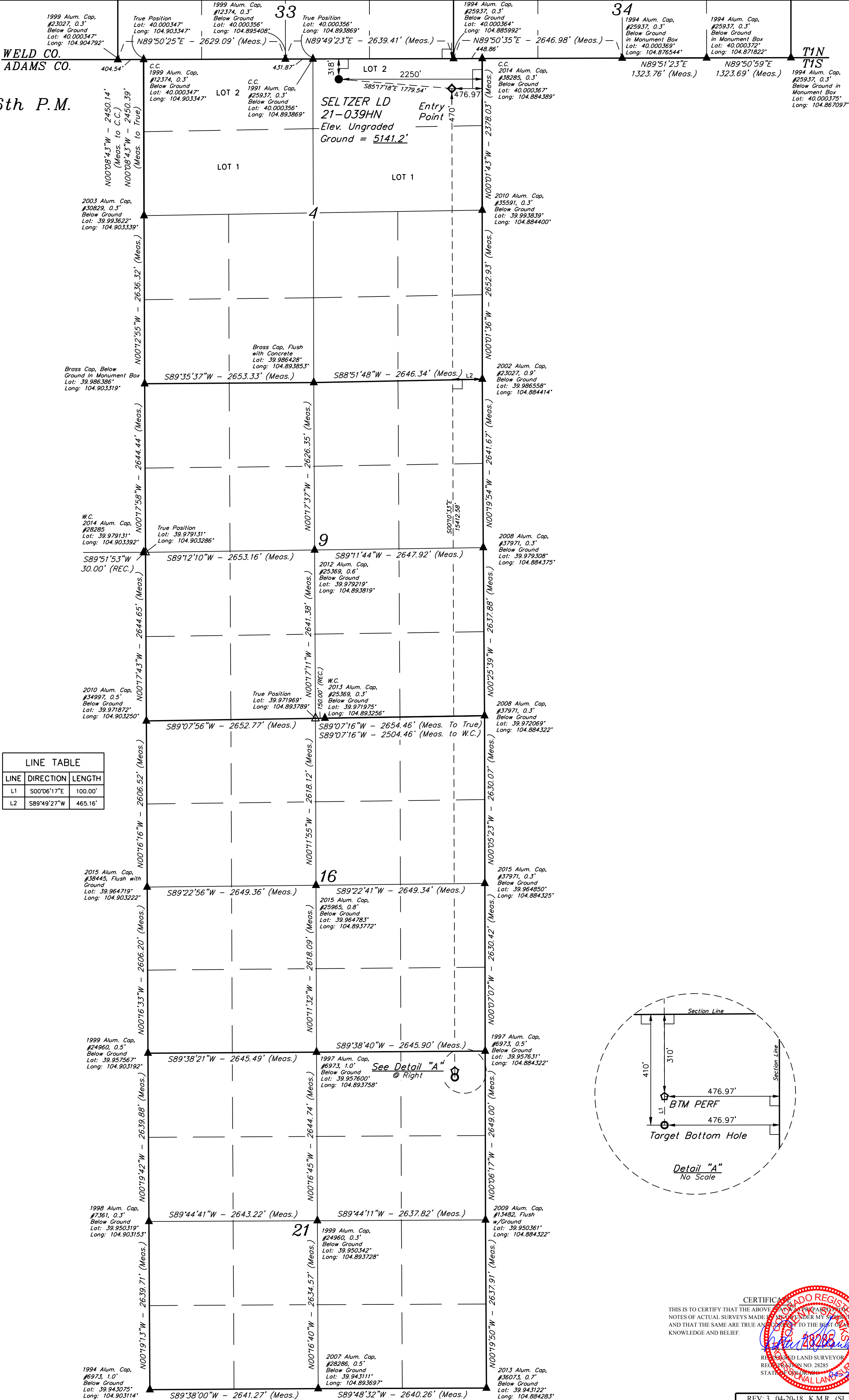


LEGEND:

- 90° SYMBOL
- PROPOSED WELLHEAD.
- TARGET BOTTOM HOLE.
- ENTRY POINT.
- BTM PERF.
- SECTION CORNERS LOCATED. (NAD 83)
- SECTION CORNERS RE-ESTABLISHED. (Not Set on Ground.) (NAD 83)

T1S, R67W, 6th P.M.



CERTIFICATE OF REGISTRATION
THIS IS TO CERTIFY THAT THE ABOVE IS A TRUE AND CORRECT COPY OF THE ORIGINAL SURVEY PLAT AND THAT THE SAME ARE TRUE AND CORRECT TO THE BEST OF MY KNOWLEDGE AND BELIEF.
REGISTERED LAND SURVEYOR
RECEIVED JAN 10 2018
STATE OF COLORADO

REV: 3 04-20-18 K.M.R. (SL MOVE)

GREAT WESTERN OPERATING COMPANY

SELTZER LD 21-039HN
NW 1/4 NE 1/4, SECTION 4, T1S, R67W, 6th P.M.
ADAMS COUNTY, COLORADO

SURVEYED BY JAMES FRESHWATER, N.W. 04-19-18 SCALE
DRAWN BY K.B. 12-30-16 1" = 1000'

WELL LOCATION PLAT

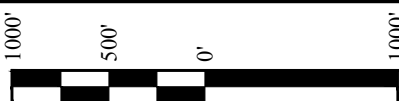
BASIS OF BEARINGS
BASIS OF BEARINGS IS A G.P.S. OBSERVATION
BASIS OF ELEVATION
BENCHMARK JR 53 5026 LOCATED IN THE SW 1/4 SE 1/4 OF SECTION 18, T1N, R68W, 6th P.M., TAKEN FROM 1988 PUBLISHED DATUM BY THE UNITED STATES DEPARTMENT OF THE INTERIOR, GEOLOGICAL SURVEY AS BEING 5028 FEET.



UELS, LLC
Corporate Office * 85 South 200 East
Vernal, UT 84078 * (435) 789-1017



PDOP = 1.4



NAD 83 (SURFACE LOCATION)	NAD 83 (ENTRY POINT)	NAD 83 (BTM PERF)	NAD 83 (TARGET BOTTOM HOLE)
LATITUDE = 39°59'58.14" (39.999484)	LATITUDE = 39°59'56.67" (39.999075)	LATITUDE = 39°57'24.39" (39.956775)	LATITUDE = 39°57'23.40" (39.956500)
LONGITUDE = 104°53'32.72" (104.892421)	LONGITUDE = 104°53'09.94" (104.886094)	LONGITUDE = 104°53'09.68" (104.886022)	LONGITUDE = 104°53'09.68" (104.886022)
NAD 27 (SURFACE LOCATION)	NAD 27 (ENTRY POINT)	NAD 27 (BTM PERF)	NAD 27 (TARGET BOTTOM HOLE)
LATITUDE = 39°59'58.20" (39.999500)	LATITUDE = 39°59'56.72" (39.999089)	LATITUDE = 39°57'24.43" (39.956792)	LATITUDE = 39°57'23.46" (39.956517)
LONGITUDE = 104°53'30.80" (104.891890)	LONGITUDE = 104°53'08.02" (104.885561)	LONGITUDE = 104°53'07.77" (104.885492)	LONGITUDE = 104°53'07.77" (104.885492)