

L = 90° SYMBOL  
 ● = PROPOSED WELLHEAD.  
 ○ = TARGET BOTTOM HOLE.  
 ◆ = ENTRY POINT.  
 ☆ = BTM PERF.  
 ▲ = SECTION CORNERS LOCATED. (NAD 83)  
 △ = SECTION CORNERS RE-ESTABLISHED.  
 (Not Set on Ground.) (NAD 83)

1999 Alum. Cap, #23027, 0.3' Below Ground Lat: 40.000347° Long: 104.904792°

WELD CO. ADAMS CO.

33

34

1994 Alum. Cap, #25937, 0.3' Below Ground Lat: 40.000364° Long: 104.885992°

1994 Alum. Cap, #25937, 0.3' Below Ground Lat: 40.000372° Long: 104.876544°

1994 Alum. Cap, #25937, 0.3' Below Ground Lat: 40.000372° Long: 104.871822°

1994 Alum. Cap, #25937, 0.3' Below Ground Lat: 40.000375° Long: 104.867097°

True Position Lat: 40.000347° Long: 104.903347°

N89°50'25"E - 2629.09' (Meas.)

N89°49'23"E - 2639.41' (Meas.)

N89°50'35"E - 2646.98' (Meas.)

404.54'

1999 Alum. Cap, #12374, 0.3' Below Ground Lat: 40.000356° Long: 104.895408°

1991 Alum. Cap, #25937, 0.3' Below Ground Lat: 40.000356° Long: 104.893869°

348'

2250'

470'

763'

Entry Point

LOT 1

LOT 2

LOT 1

LOT 2

2003 Alum. Cap, #30829, 0.3' Below Ground Lat: 39.993622° Long: 104.903339°

2010 Alum. Cap, #34997, 0.5' Below Ground Lat: 39.971872° Long: 104.903250°

2015 Alum. Cap, #38445, Flush with Ground Lat: 39.964719° Long: 104.903222°

1999 Alum. Cap, #24960, 0.5' Below Ground Lat: 39.957567° Long: 104.903192°

1998 Alum. Cap, #7361, 0.3' Below Ground Lat: 39.950319° Long: 104.903153°

1994 Alum. Cap, #6973, 1.0' Below Ground Lat: 39.943075° Long: 104.903114°

2007 Alum. Cap, #28286, 0.5' Below Ground Lat: 39.943122° Long: 104.884283°

2013 Alum. Cap, #36073, 0.7' Below Ground Lat: 39.943122° Long: 104.884283°

2008 Alum. Cap, #37971, 0.3' Below Ground Lat: 39.972069° Long: 104.884322°

2015 Alum. Cap, #37971, 0.3' Below Ground Lat: 39.964850° Long: 104.884325°

2012 Alum. Cap, #25369, 0.6' Below Ground Lat: 39.971975° Long: 104.893256°

W.C. 2013 Alum. Cap, #25369, 0.3' Below Ground Lat: 39.971975° Long: 104.893256°

W.C. 2014 Alum. Cap, #28285 Lat: 39.979131° Long: 104.903286°

W.C. 2014 Alum. Cap, #28285 Lat: 39.979131° Long: 104.903286°

Brass Cap, Flush with Concrete Lat: 39.986428° Long: 104.893853°

Brass Cap, Below Ground in Monument Box Lat: 39.986386° Long: 104.903319°

2010 Alum. Cap, #34997, 0.5' Below Ground Lat: 39.971872° Long: 104.903250°

2008 Alum. Cap, #37971, 0.3' Below Ground Lat: 39.972069° Long: 104.884322°

2015 Alum. Cap, #38445, Flush with Ground Lat: 39.964719° Long: 104.903222°

2010 Alum. Cap, #34997, 0.5' Below Ground Lat: 39.971872° Long: 104.903250°

W.C. 2014 Alum. Cap, #28285 Lat: 39.979131° Long: 104.903286°

Brass Cap, Below Ground in Monument Box Lat: 39.986386° Long: 104.903319°

2003 Alum. Cap, #30829, 0.3' Below Ground Lat: 39.993622° Long: 104.903339°

1999 Alum. Cap, #12374, 0.3' Below Ground Lat: 40.000356° Long: 104.895408°

1991 Alum. Cap, #25937, 0.3' Below Ground Lat: 40.000356° Long: 104.893869°

1994 Alum. Cap, #25937, 0.3' Below Ground Lat: 40.000372° Long: 104.876544°

1994 Alum. Cap, #25937, 0.3' Below Ground Lat: 40.000372° Long: 104.871822°

1994 Alum. Cap, #25937, 0.3' Below Ground Lat: 40.000375° Long: 104.867097°

True Position Lat: 40.000347° Long: 104.903347°

N89°50'25"E - 2629.09' (Meas.)

N89°49'23"E - 2639.41' (Meas.)

N89°50'35"E - 2646.98' (Meas.)

404.54'

1999 Alum. Cap, #12374, 0.3' Below Ground Lat: 40.000356° Long: 104.895408°

1991 Alum. Cap, #25937, 0.3' Below Ground Lat: 40.000356° Long: 104.893869°

348'

2250'

470'

763'

Entry Point

LOT 1

LOT 2

LOT 1

LOT 2

2003 Alum. Cap, #30829, 0.3' Below Ground Lat: 39.993622° Long: 104.903339°

2010 Alum. Cap, #34997, 0.5' Below Ground Lat: 39.971872° Long: 104.903250°

2015 Alum. Cap, #38445, Flush with Ground Lat: 39.964719° Long: 104.903222°

1999 Alum. Cap, #24960, 0.5' Below Ground Lat: 39.957567° Long: 104.903192°

1998 Alum. Cap, #7361, 0.3' Below Ground Lat: 39.950319° Long: 104.903153°

1994 Alum. Cap, #6973, 1.0' Below Ground Lat: 39.943075° Long: 104.903114°

2007 Alum. Cap, #28286, 0.5' Below Ground Lat: 39.943122° Long: 104.884283°

2013 Alum. Cap, #36073, 0.7' Below Ground Lat: 39.943122° Long: 104.884283°

2008 Alum. Cap, #37971, 0.3' Below Ground Lat: 39.972069° Long: 104.884322°

2015 Alum. Cap, #37971, 0.3' Below Ground Lat: 39.964850° Long: 104.884325°

2012 Alum. Cap, #25369, 0.6' Below Ground Lat: 39.971975° Long: 104.893256°

W.C. 2013 Alum. Cap, #25369, 0.3' Below Ground Lat: 39.971975° Long: 104.893256°

W.C. 2014 Alum. Cap, #28285 Lat: 39.979131° Long: 104.903286°

W.C. 2014 Alum. Cap, #28285 Lat: 39.979131° Long: 104.903286°

Brass Cap, Flush with Concrete Lat: 39.986428° Long: 104.893853°

Brass Cap, Below Ground in Monument Box Lat: 39.986386° Long: 104.903319°

2010 Alum. Cap, #34997, 0.5' Below Ground Lat: 39.971872° Long: 104.903250°

2008 Alum. Cap, #37971, 0.3' Below Ground Lat: 39.972069° Long: 104.884322°

2015 Alum. Cap, #38445, Flush with Ground Lat: 39.964719° Long: 104.903222°

2010 Alum. Cap, #34997, 0.5' Below Ground Lat: 39.971872° Long: 104.903250°

W.C. 2014 Alum. Cap, #28285 Lat: 39.979131° Long: 104.903286°

Brass Cap, Below Ground in Monument Box Lat: 39.986386° Long: 104.903319°

2003 Alum. Cap, #30829, 0.3' Below Ground Lat: 39.993622° Long: 104.903339°

1999 Alum. Cap, #12374, 0.3' Below Ground Lat: 40.000356° Long: 104.895408°

1991 Alum. Cap, #25937, 0.3' Below Ground Lat: 40.000356° Long: 104.893869°

1994 Alum. Cap, #25937, 0.3' Below Ground Lat: 40.000372° Long: 104.876544°

1994 Alum. Cap, #25937, 0.3' Below Ground Lat: 40.000372° Long: 104.871822°

1994 Alum. Cap, #25937, 0.3' Below Ground Lat: 40.000375° Long: 104.867097°

True Position Lat: 40.000347° Long: 104.903347°

N89°50'25"E - 2629.09' (Meas.)

N89°49'23"E - 2639.41' (Meas.)

N89°50'35"E - 2646.98' (Meas.)

404.54'

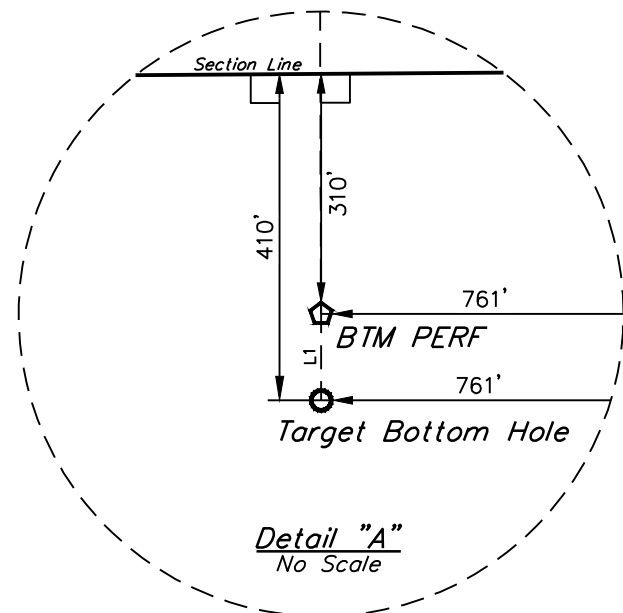
1999 Alum. Cap, #12374, 0.3' Below Ground Lat: 40.000356° Long: 104.895408°

1991 Alum. Cap, #25937, 0.3' Below Ground Lat: 40.000356° Long: 104.893869°

348'

2250'</

LINE TABLE		
LINE	DIRECTION	LENGTH
L1	S00°06'17"E	100.00'



CERTIFICATE

THIS IS TO CERTIFY THAT THE ABOVE EXAMINER PREPARED, COMPILED, AND  
NOTES OF ACTUAL SURVEYS MADE BY ME HEREUNDER MY SIGNATURE  
AND THAT THE SAME ARE TRUE AND CORRECT TO THE BEST OF MY  
KNOWLEDGE AND BELIEF.

REGISTERED LAND SURVEYOR  
REGISTRATION NO. 28285  
STATE OF COLORADO  
04-20-18

REV: 3 04-20-18 K.M.R. (SL MOVE

## GREAT WESTERN OPERATING COMPANY

**SELTZER LD 21-037HNX  
NW 1/4 NE 1/4, SECTION 4, T1S, R67W, 6th P.M.  
ADAMS COUNTY, COLORADO**

<b>SURVEYED BY</b>	JAMES FRESHWATER, N.W.	04-19-18	<b>SCALE</b>
<b>DRAWN BY</b>	K.B.	12-30-16	1" = 1000'

## WELL LOCATION PLAT

**BASIS OF BEARINGS**  
BASIS OF BEARINGS IS A G.P.S. OBSERVATION

**BASIS OF ELEVATION**  
BENCHMARK JR 53 5026 LOCATED IN THE SW 1/4 SE 1/4 OF SECTION 18, T1N, R68W, 6th P.M., TAKEN FROM 1988 PUBLISHED DATUM BY THE UNITED STATES DEPARTMENT OF THE INTERIOR. GEOLOGICAL SURVEY AS BEING 5028 FEET.



**UELS, LLC**  
Corporate Office \* 85 South 200 East  
Vernal, UT 84078 \* (435) 789-1017

**PDOP = 1.6**



<b>NAD 83 (SURFACE LOCATION)</b>	<b>NAD 83 (ENTRY POINT)</b>	<b>NAD 83 (BTM PERF)</b>	<b>NAD 83 (TARGET BOTTOM HOLE)</b>
LATITUDE = 30°59'57.85" (30.999402)	LATITUDE = 30°59'56.66" (30.999072)	LATITUDE = 30°57'24.38" (30.956772)	LATITUDE = 30°57'23.39" (30.956497)
LONGITUDE = 104°53'32.72" (104.892421)	LONGITUDE = 104°53'13.61" (104.887114)	LONGITUDE = 104°53'13.33" (104.887036)	LONGITUDE = 104°53'13.33" (104.887036)
<b>NAD 27 (SURFACE LOCATION)</b>	<b>NAD 27 (ENTRY POINT)</b>	<b>NAD 27 (BTM PERF)</b>	<b>NAD 27 (TARGET BOTTOM HOLE)</b>
LATITUDE = 30°59'57.90" (30.999418)	LATITUDE = 30°59'56.72" (30.999089)	LATITUDE = 30°57'24.43" (30.956786)	LATITUDE = 30°57'23.45" (30.956514)
LONGITUDE = 104°53'30.80" (104.891890)	LONGITUDE = 104°53'11.70" (104.886583)	LONGITUDE = 104°53'11.41" (104.886503)	LONGITUDE = 104°53'11.41" (104.886503)