



May 1<sup>st</sup> 2018

Colorado Oil and Gas Conservation Commission  
1120 Lincoln Street, Suite 801  
Denver, CO 80203

**RE: Proposed Drilling and Spacing Unit**  
Seltzer LD 21-036HN  
Niobrara New Drill  
NWNE Sec. 4, Township 1S, and Range 67W  
Adams County, Colorado

Dear Director,

Great Western Operating Company, LLC (Great Western) is planning to drill the above captioned well in accordance with the provisions of Colorado Oil and Gas Conservation Commission (COGCC) Rule 318A.e.

Great Western's Proposed Drilling and Spacing Unit:

Township 1S, Range 67W (Adams County):

Section 4: E2  
Section 9: E2  
Section 16: E2  
Section 21: N2NE

**Total Acres: 1040 ac**

The 30 day notification time period has passed and we have not yet received any objections to such well locations or proposed spacing unit, therefore Great Western hereby requests the Director to approve the above mentioned well. Great Western respectfully requests the COGCC review the enclosed map illustrating the Proposed Drilling and Spacing Unit.

Respectfully,

Natalie Svendsen  
Regulatory Analyst  
Great Western Operating Company, LLC

L = 90° SYMBOL  
 ● = PROPOSED WELLHEAD.  
 ○ = TARGET BOTTOM HOLE.  
 ◆ = ENTRY POINT.  
 ☆ = BTM PERF.  
 ▲ = SECTION CORNERS LOCATED. (NAD 83)  
 △ = SECTION CORNERS RE-ESTABLISHED.  
 (Not Set on Ground.) (NAD 83)

**WELD CO.**  
**ADAMS CO.**

**36th P.M.**

**SELTZER LD**  
21-036HN  
Elev. Ungraded Ground = 5142.5'

**LOT 1**  
**LOT 2**

**LINE TABLE**

LINE	DIRECTION	LENGTH
L1	S85°11'56"E	1056.22'
L2	S00°06'17"E	100.00'

**SPACING UNIT DESCRIPTION**  
SEC 4: E2  
SEC 9: E2  
SEC 16: E2  
SEC 21: N2NE4  
UNIT ACREAGE: 1040

**Detail "A"**  
No Scale

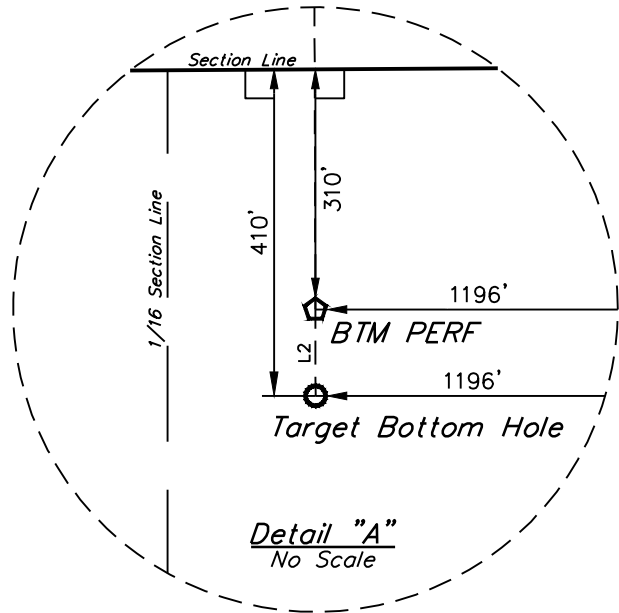
**CERTIFICATE OF RECORDING**  
THIS IS TO CERTIFY THAT THE ABOVE DESCRIBED SURVEY WAS RECORDED IN MY OFFICE AND THAT THE SAME ARE TRUE AND CORRECT TO THE BEST OF MY KNOWLEDGE AND BELIEF.

**RECORDED LAND SURVEYOR**  
REGISTRATION NO. 28285  
STATE OF COLORADO

**REV. 3 04-20-18 KMR /S**


LINE TABLE		
LINE	DIRECTION	LENGTH
L1	S85°11'56"E	1056.22'
L2	S00°06'17"E	100.00'

SPACING UNIT DESCRIPTION  
SEC 4: E2  
SEC 9: E2  
SEC 16: E2  
SEC 21: N2NE4  
UNIT ACREAGE: 1040



**CERTIFICATE**

THIS IS TO CERTIFY THAT THE ABOVE MAP WAS PREPARED FROM FIELD NOTES OF ACTUAL SURVEYS MADE BY ME OR UNDER MY SUPERVISION AND THAT THE SAME ARE TRUE AND CORRECT TO THE BEST OF MY KNOWLEDGE AND BELIEF.



REGISTERED LAND SURVEYOR  
REGISTRATION NO. 28285  
STATE OF COLORADO 04-20-18

REV: 3 04-20-18 K.M.R. (SL MOVE)

## GREAT WESTERN OPERATING COMPANY

**SELTZER LD 21-036HN  
NW 1/4 NE 1/4, SECTION 4, T1S, R67W, 6th P.M.  
ADAMS COUNTY, COLORADO**

<b>SURVEYED BY</b>	JAMES FRESHWATER, N.W.	04-19-18	<b>SCALE</b>
<b>DRAWN BY</b>	K.B.	12-30-16	1" = 1000'

## WELL LOCATION PLAT

### **BASIS OF BEARINGS**

### BASIS OF ELEVATION

BENCHMARK JR 53 5026 LOCATED IN THE SW 1/4 SE 1/4 OF SECTION 18, T1N, R68W, 6th P.M., TAKEN FROM 1988 PUBLISHED DATUM BY THE UNITED STATES DEPARTMENT OF THE INTERIOR, GEOLOGICAL SURVEY AS BEING 5028 FEET.

**UELS, LLC**

**Corporate Office \* 85 South 200 East  
Vernal, UT 84078 \* (435) 789-1017**



**UINAH**  
ENGINEERING & LAND SURVEYING

**PDOP = 1.4**



<b>NAD 83 (SURFACE LOCATION)</b>	<b>NAD 83 (ENTRY POINT)</b>	<b>NAD 83 (BTM PERP)</b>	<b>NAD 83 (TARGET BOTTOM HOLE)</b>
LATITUDE = 39°59'57.51" (99.999319)	LATITUDE = 39°59'56.66" (99.99072)	LATITUDE = 39°57'24.36" (99.956767)	LATITUDE = 39°5723.37" (99.956492)
LONGITUDE = 104°53'32.72" (104.892422)	LONGITUDE = 104°53'19.20" (104.888667)	LONGITUDE = 104°53'18.91" (104.888586)	LONGITUDE = 104°53'18.91" (104.888586)
<b>NAD 27 (SURFACE LOCATION)</b>	<b>NAD 27 (ENTRY POINT)</b>	<b>NAD 27 (BTM PERP)</b>	<b>NAD 27 (TARGET BOTTOM HOLE)</b>
LATITUDE = 39°59'57.61" (99.999353)	LATITUDE = 39°59'56.72" (99.990898)	LATITUDE = 39°57'24.37" (99.956783)	LATITUDE = 39°5723.43" (99.956508)
LONGITUDE = 104°53'30.81" (104.891890)	LONGITUDE = 104°53'17.29" (104.888136)	LONGITUDE = 104°53'17.00" (104.88856)	LONGITUDE = 104°53'17.00" (104.88856)