

L = 90° SYMBOL  
 ● = PROPOSED WELLHEAD.  
 ○ = TARGET BOTTOM HOLE.  
 ◆ = ENTRY POINT.  
 ☆ = BTM PERF.  
 ▲ = SECTION CORNERS LOCATED. (NAD 83)  
 △ = SECTION CORNERS RE-ESTABLISHED.  
 (Not Set on Ground.) (NAD 83)

**WELD CO.**  
**ADAMS CO.**

**Sth P.M.**

**T1N**

**33**

**34**

**LOT 1**

**LOT 2**

**Entry Point**

**SELTZER LD 21-033HN**  
Elev. Ungraded Ground = 5143.9'

**LINE TABLE**

LINE	DIRECTION	LENGTH
L1	S84°02'25"E	296.14'
L2	S00°06'17"E	100.00'

**Detail "A"**  
No Scale

**Target Bottom Hole**

**See Detail "A"**  
© Right

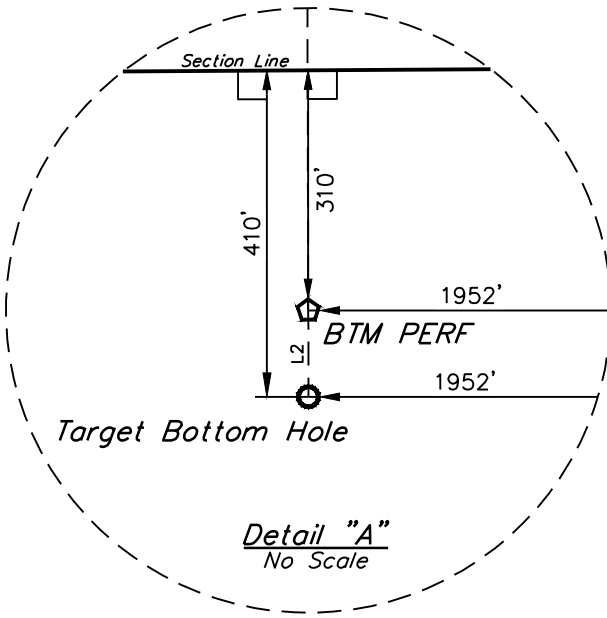
**CERTIFICATE OF RECORD REGISTRATION**

THIS IS TO CERTIFY THAT THE ABOVE SURVEY WAS PREPARED FROM NOTES OF ACTUAL SURVEYS MADE BY ME OR UNDER MY SUPERVISION AND THAT THE SAME ARE TRUE AND CORRECT TO THE BEST OF MY KNOWLEDGE AND BELIEF.

**REGISTERED LAND SURVEYOR**  
REGISTRATION NO. 28385  
STATE OF COLORADO

REV: 3 04-20-18 KMR (S)

LINE TABLE		
LINE	DIRECTION	LENGTH
L1	S84°02'25"E	296.14'
L2	S00°06'17"E	100.00'



**CERTIFICATE**

THIS IS TO CERTIFY THAT THE ABOVE EXAMINER'S PREPARED FROM FIELD NOTES OF ACTUAL SURVEYS MADE IN ACCORDANCE WITH MY SUPERVISOR'S ORDER AND THAT THE SAME ARE TRUE AND CORRECT TO THE BEST OF MY KNOWLEDGE AND BELIEF.

*[Signature]*  
\_\_\_\_\_  
Surveyor General

RECEIVED  
COUNTY CLERK  
JAN 10 2013  
COUNTY OF LOS ANGELES  
REGISTERED

REGISTERED LAND SURVEYOR  
REGISTRATION NO. 28285  
STATE OF COLORADO  
04-20-1

REV: 3 04-20-18 K.M.R. (SL MOVE)

# GREAT WESTERN OPERATING COMPANY

**SELTZER LD 21-033HN**  
**NW 1/4 NE 1/4, SECTION 4, T1S, R67W, 6th P.M.**

<b>SURVEYED BY</b>	JAMES FRESHWATER, N.W.	04-19-18	<b>SCALE</b>
<b>DRAWN BY</b>	K.B.	12-30-16	1" = 1000'

**BASIS OF BEARINGS**  
BASIS OF BEARINGS IS A G.P.S. OBSERVATION

**BASIS OF ELEVATION**  
BENCHMARK JR 53 5026 LOCATED IN THE SW 1/4 SE 1/4 OF SECTION 18, T1N, R68W, 6th P.M., TAKEN FROM 1988 PUBLISHED DATUM BY THE UNITED STATES DEPARTMENT OF THE INTERIOR. GEOLOGICAL SURVEY AS BEING 5028 FEET.

**UELS, LLC**  
Corporate Office \* 85 South 200 East  
Vernal, UT 84078 \* (435) 789-1017



**UINTAH**  
ENGINEERING & LAND SURVEYING

**PDOP = 1.4**



<b>NAD 83 (SURFACE LOCATION)</b>	<b>NAD 83 (ENTRY POINT)</b>	<b>NAD 83 (BTM PERF)</b>	<b>NAD 83 (TARGET BOTTOM HOLE)</b>
<b>LATITUDE = 39°59'56.96" (39.999155)</b>	<b>LATITUDE = 39°59'56.65" (39.999069)</b>	<b>LATITUDE = 39°57'24.33" (39.956758)</b>	<b>LATITUDE = 39°57'23.34" (39.956483)</b>
<b>LONGITUDE = 104°53'32.72" (104.892422)</b>	<b>LONGITUDE = 104°53'28.94" (104.891372)</b>	<b>LONGITUDE = 104°53'28.62" (104.891283)</b>	<b>LONGITUDE = 104°53'28.62" (104.891283)</b>
<b>NAD 27 (SURFACE LOCATION)</b>	<b>NAD 27 (ENTRY POINT)</b>	<b>NAD 27 (BTM PERF)</b>	<b>NAD 27 (TARGET BOTTOM HOLE)</b>
<b>LATITUDE = 39°59'57.01" (39.999171)</b>	<b>LATITUDE = 39°59'56.71" (39.999086)</b>	<b>LATITUDE = 39°57'24.38" (39.956772)</b>	<b>LATITUDE = 39°57'23.39" (39.956497)</b>
<b>LONGITUDE = 104°53'30.81" (104.891891)</b>	<b>LONGITUDE = 104°53'27.02" (104.890839)</b>	<b>LONGITUDE = 104°53'26.70" (104.890750)</b>	<b>LONGITUDE = 104°53'26.70" (104.890750)</b>