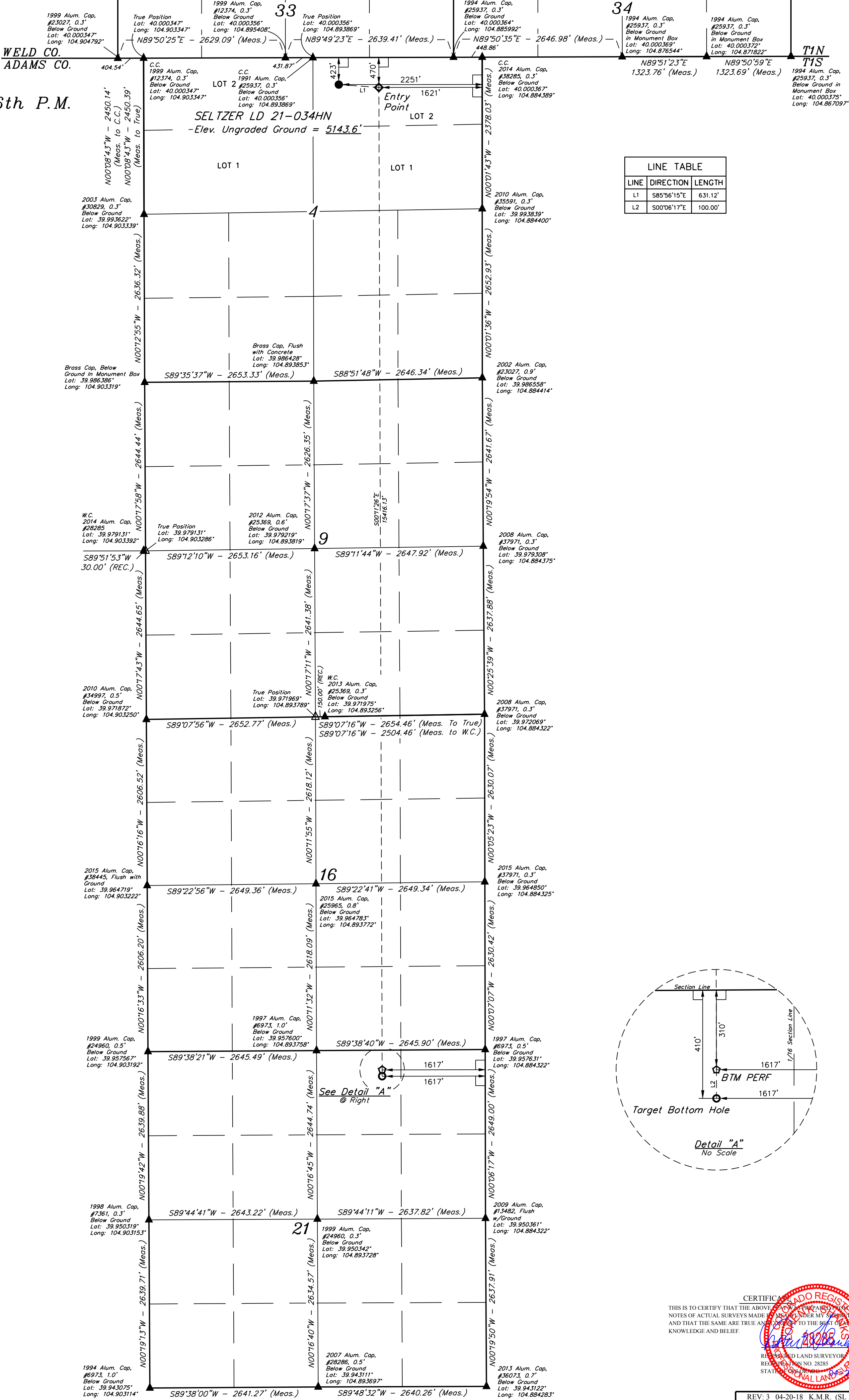


LEGEND:

- 90° SYMBOL
- PROPOSED WELLHEAD.
- TARGET BOTTOM HOLE.
- ENTRY POINT.
- BTM PERF.
- SECTION CORNERS LOCATED. (NAD 83)
- SECTION CORNERS RE-ESTABLISHED. (Not Set on Ground.) (NAD 83)

T1S, R67W, 6th P.M.



BASIS OF BEARINGS
BASIS OF BEARINGS IS A G.P.S. OBSERVATION
BASIS OF ELEVATION
BENCHMARK JR 53 5026 LOCATED IN THE SW 1/4 SE 1/4 OF SECTION 18, T1N, R68W, 6th P.M., TAKEN FROM 1988 PUBLISHED DATUM BY THE UNITED STATES DEPARTMENT OF THE INTERIOR, GEOLOGICAL SURVEY AS BEING 5028 FEET.



UELS, LLC
Corporate Office * 85 South 200 East
Vernal, UT 84078 * (435) 789-1017



PDOP = 1.4

NAD 83 (SURFACE LOCATION)	NAD 83 (ENTRY POINT)	NAD 83 (BTM PERF)	NAD 83 (TARGET BOTTOM HOLE)
LATITUDE = 39°59'57.10" (39.999196)	LATITUDE = 39°59'56.65" (39.999069)	LATITUDE = 39°57'24.34" (39.956761)	LATITUDE = 39°57'23.35" (39.956486)
LONGITUDE = 104°53'32.72" (104.892422)	LONGITUDE = 104°53'24.63" (104.890175)	LONGITUDE = 104°53'24.32" (104.890089)	LONGITUDE = 104°53'24.32" (104.890089)
NAD 27 (SURFACE LOCATION)	NAD 27 (ENTRY POINT)	NAD 27 (BTM PERF)	NAD 27 (TARGET BOTTOM HOLE)
LATITUDE = 39°59'57.16" (39.999212)	LATITUDE = 39°59'56.71" (39.999086)	LATITUDE = 39°57'24.40" (39.956778)	LATITUDE = 39°57'23.41" (39.956503)
LONGITUDE = 104°53'30.81" (104.891891)	LONGITUDE = 104°53'22.72" (104.889644)	LONGITUDE = 104°53'22.40" (104.889556)	LONGITUDE = 104°53'22.40" (104.889556)

GREAT WESTERN OPERATING COMPANY

SELTZER LD 21-034HN
NW 1/4 NE 1/4, SECTION 4, T1S, R67W, 6th P.M.
ADAMS COUNTY, COLORADO

SURVEYED BY	JAMES FRESHWATER, N.W.	04-19-18	SCALE
DRAWN BY	K.B.	12-30-16	1" = 1000'

WELL LOCATION PLAT