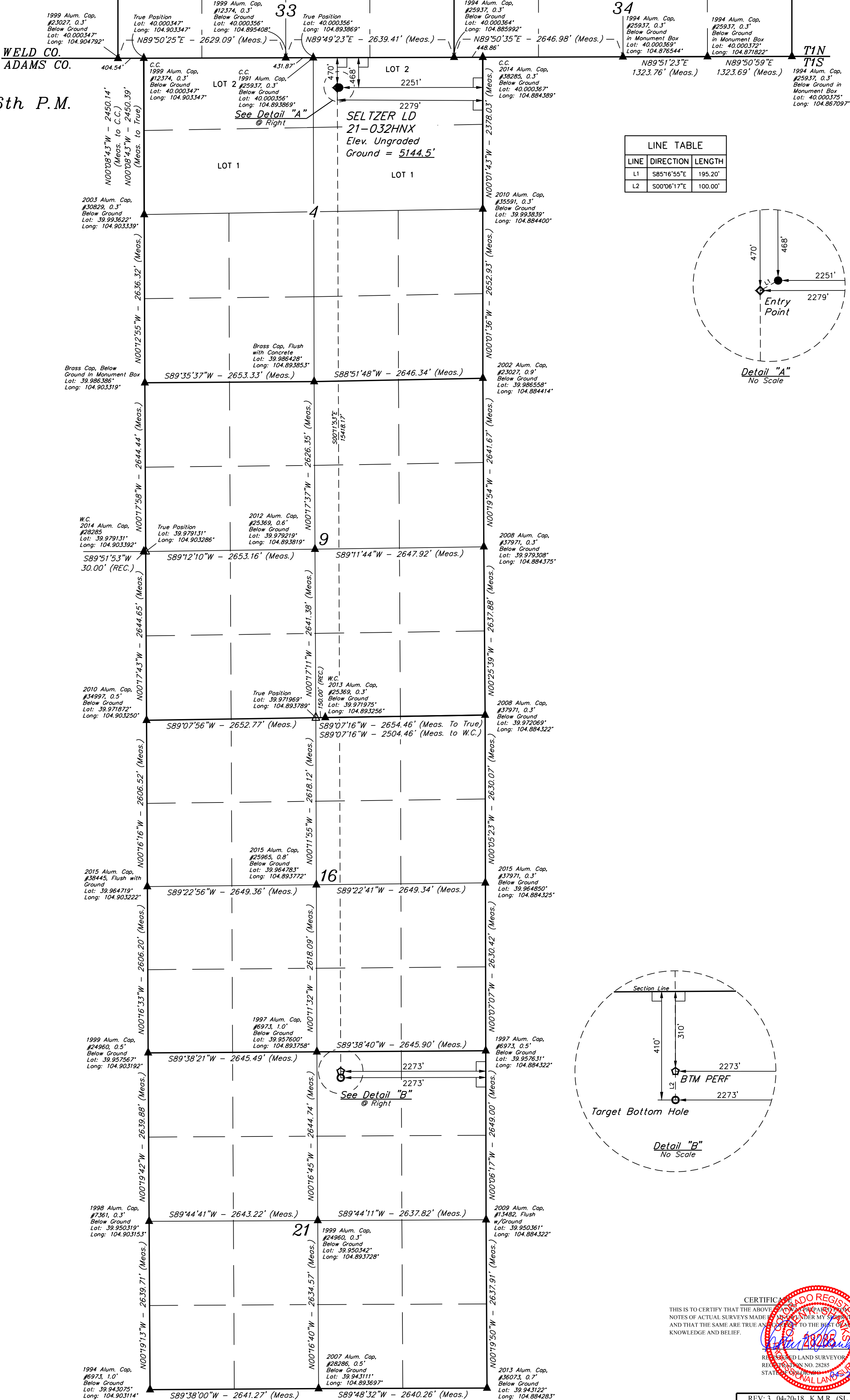


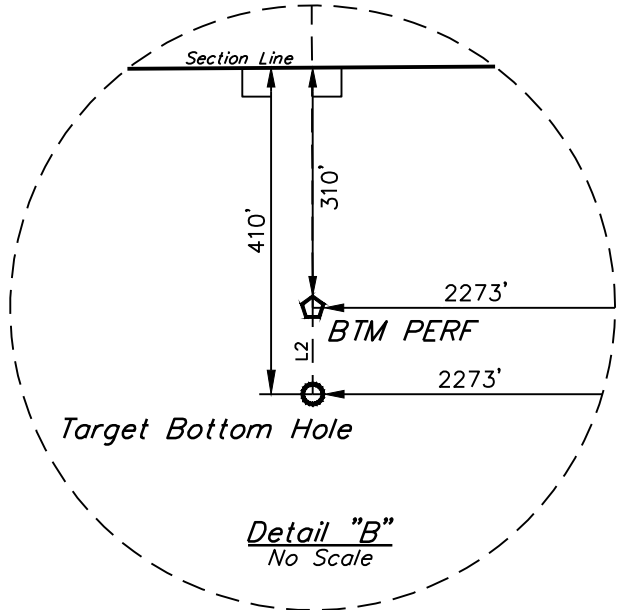
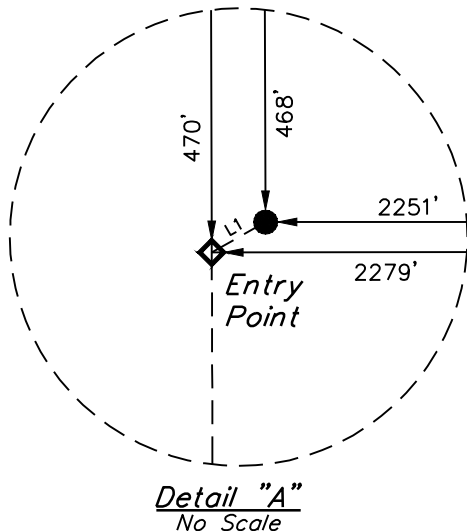
LEGEND:

- 90° SYMBOL
- PROPOSED WELLHEAD.
- TARGET BOTTOM HOLE.
- ENTRY POINT.
- BTM PERF.
- SECTION CORNERS LOCATED. (NAD 83)
- SECTION CORNERS RE-ESTABLISHED. (Not Set on Ground.) (NAD 83)

T1S, R67W, 6th P.M.



LINE TABLE		
LINE	DIRECTION	LENGTH
L1	S85°16'55"E	195.20'
L2	S00°06'17"E	100.00'



CERTIFICATE OF REGISTRATION
 THIS IS TO CERTIFY THAT THE ABOVE SURVEY WAS PREPARED BY THE UNDERSIGNED, A LICENSED LAND SURVEYOR, AND THAT THE SAME ARE TRUE AND CORRECT TO THE BEST OF HIS KNOWLEDGE AND BELIEF.
 RECORDED LAND SURVEYOR
 REGISTRATION NO. 28285
 STATE OF COLORADO
 18

REV: 3 04-20-18 K.M.R. (SL MOVE)

GREAT WESTERN OPERATING COMPANY

SELTZER LD 21-032HNX
 NW 1/4 NE 1/4, SECTION 4, T1S, R67W, 6th P.M.
 ADAMS COUNTY, COLORADO

SURVEYED BY	JAMES FRESHWATER, N.W.	04-19-18	SCALE
DRAWN BY	K.B.	12-30-16	1" = 1000'

WELL LOCATION PLAT

BASIS OF BEARINGS
 BASIS OF BEARINGS IS A G.P.S. OBSERVATION
BASIS OF ELEVATION

BENCHMARK JR 53 5026 LOCATED IN THE SW 1/4 SE 1/4 OF SECTION 18, T1N, R68W, 6th P.M., TAKEN FROM 1988 PUBLISHED DATUM BY THE UNITED STATES DEPARTMENT OF THE INTERIOR, GEOLOGICAL SURVEY AS BEING 5028 FEET.

UELS, LLC
 Corporate Office * 85 South 200 East
 Vernal, UT 84078 * (435) 789-1017

PDOP = 1.4

NAD 83 (SURFACE LOCATION)	NAD 83 (ENTRY POINT)	NAD 83 (BTM PERF)	NAD 83 (TARGET BOTTOM HOLE)
LATITUDE = 39°59'56.66" (39.999072)	LATITUDE = 39°59'56.64" (39.999067)	LATITUDE = 39°57'24.31" (39.956753)	LATITUDE = 39°57'23.32" (39.956478)
LONGITUDE = 104°53'32.72" (104.892422)	LONGITUDE = 104°53'33.09" (104.892525)	LONGITUDE = 104°53'32.74" (104.892428)	LONGITUDE = 104°53'32.74" (104.892428)
NAD 27 (SURFACE LOCATION)	NAD 27 (ENTRY POINT)	NAD 27 (BTM PERF)	NAD 27 (TARGET BOTTOM HOLE)
LATITUDE = 39°59'56.72" (39.999088)	LATITUDE = 39°59'56.70" (39.999083)	LATITUDE = 39°57'24.37" (39.956769)	LATITUDE = 39°57'23.38" (39.956494)
LONGITUDE = 104°53'30.81" (104.891891)	LONGITUDE = 104°53'31.17" (104.891922)	LONGITUDE = 104°53'30.83" (104.891897)	LONGITUDE = 104°53'30.83" (104.891897)