



May 1st 2018

Colorado Oil and Gas Conservation Commission
1120 Lincoln Street, Suite 801
Denver, CO 80203

RE: Proposed Drilling and Spacing Unit
Seltzer LD 21-033HC
Codell New Drill
NWNE Sec. 4, Township 1S, and Range 67W
Adams County, Colorado

Dear Director,

Great Western Operating Company, LLC (Great Western) is planning to drill the above captioned well in accordance with the provisions of Colorado Oil and Gas Conservation Commission (COGCC) Rule 318A.e.

Great Western's Proposed Drilling and Spacing Unit:

Township 1S, Range 67W (Adams County):
Section 4: E2
Section 9: E2
Section 16: E2
Section 21: N2NE

Total Acres: 1040 ac

The 30 day notification time period has passed and we have not yet received any objections to such well locations or proposed spacing unit, therefore Great Western hereby requests the Director to approve the above mentioned well. Great Western respectfully requests the COGCC review the enclosed map illustrating the Proposed Drilling and Spacing Unit.

Respectfully,

Natalie Svendsen
Regulatory Analyst
Great Western Operating Company, LLC

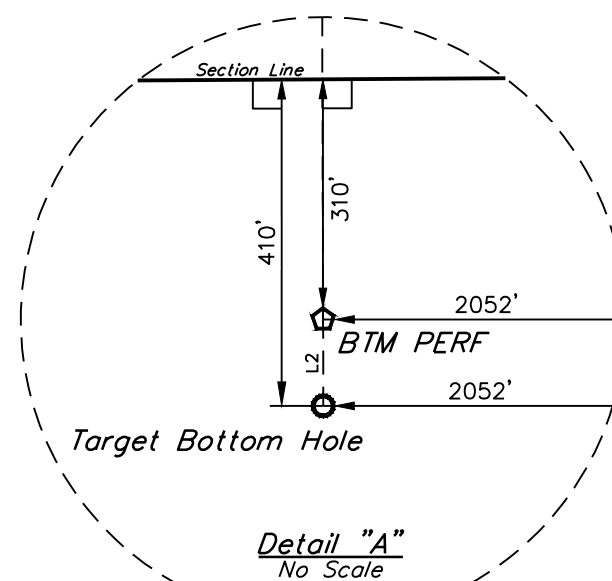
L = 90° SYMBOL
 ● = PROPOSED WELLHEAD.
 ○ = TARGET BOTTOM HOLE.
 ◆ = ENTRY POINT.
 ☆ = BTM PERF.
 ▲ = SECTION CORNERS LOCATED. (NAD 83)
 △ = SECTION CORNERS RE-ESTABLISHED.
 (Not Set on Ground.) (NAD 83)

WELD CO.
ADAMS CO.

SELTZER LD 21-033H
Elev. Ungraded Ground =


SPACING UNIT DESCRIPTION
SEC 4: E2
SEC 9: E2
SEC 16: E2
SEC 21: N2NE4
UNIT ACREAGE: 1040

LINE TABLE		
LINE	DIRECTION	LENGTH
L1	S85°16'55"E	195.20'
L2	S00°06'17"E	100.00'



CERTIFICATE

THIS IS TO CERTIFY THAT THE ABOVE MAP WAS PREPARED FROM FIELD NOTES OF ACTUAL SURVEYS MADE BY ME OR UNDER MY SUPERVISION AND THAT THE SAME ARE TRUE AND ACCURATE TO THE BEST OF MY KNOWLEDGE AND BELIEF.



REGISTERED LAND SURVEYOR
REGISTRATION NO. 28285
STATE OF COLORADO

REV: 3 04-20-18 K.M.R. (SL MOVE)

GREAT WESTERN OPERATING COMPANY

SELTZER LD 21-033HC
NW 1/4 NE 1/4, SECTION 4, T1S, R67W, 6th P.M.
ADAMS COUNTY, COLORADO

SURVEYED BY	JAMES FRESHWATER, N.W.	04-19-18	SCALE
DRAWN BY	K.B.	12-30-16	1" = 1000'

BASIS OF BEARINGS

BASIS OF ELEVATION

ATED IN THE SW 1/4 SE 1/4 OF SE

BENCHMARK JR 53 5026 LOCATED IN THE SW 1/4 SE 1/4 OF SECTION 18, T1N, R68W, 6th P.M., TAKEN FROM 1988 PUBLISHED DATUM BY THE UNITED STATES DEPARTMENT OF THE INTERIOR. GEOLOGICAL SURVEY AS BEING 5028 FEET.

UELS, LLC

Corporate Office * 85 South 200 East
Vernal, UT 84078 * (435) 789-1017

PDOP = 1.4



NAD 83 (SURFACE LOCATION)	NAD 83 (ENTRY POINT)	NAD 83 (BTM PEAK)	NAD 83 (TARGET BOTTOM HOLE)
LATITUDE = 39°59'56.81" (39.999113)	LATITUDE = 39°59'56.65" (39.999069)	LATITUDE = 39°57'24.32" (39.956756)	LATITUDE = 39°57'23.39" (39.956481)
LONGITUDE = 104°53'32.72" (104.892422)	LONGITUDE = 104°53'30.22" (104.891728)	LONGITUDE = 104°53'29.90" (104.891639)	LONGITUDE = 104°53'29.90" (104.891639)
NAD 27 (SURFACE LOCATION)	NAD 27 (ENTRY POINT)	NAD 27 (BTM PEAK)	NAD 27 (TARGET BOTTOM HOLE)
LATITUDE = 39°59'58.37" (39.999129)	LATITUDE = 39°59'56.70" (39.999083)	LATITUDE = 39°57'24.38" (39.956772)	LATITUDE = 39°57'23.39" (39.956481)
LONGITUDE = 104°53'30.81" (104.891891)	LONGITUDE = 104°53'28.31" (104.891197)	LONGITUDE = 104°53'27.99" (104.891108)	LONGITUDE = 104°53'27.99" (104.891108)