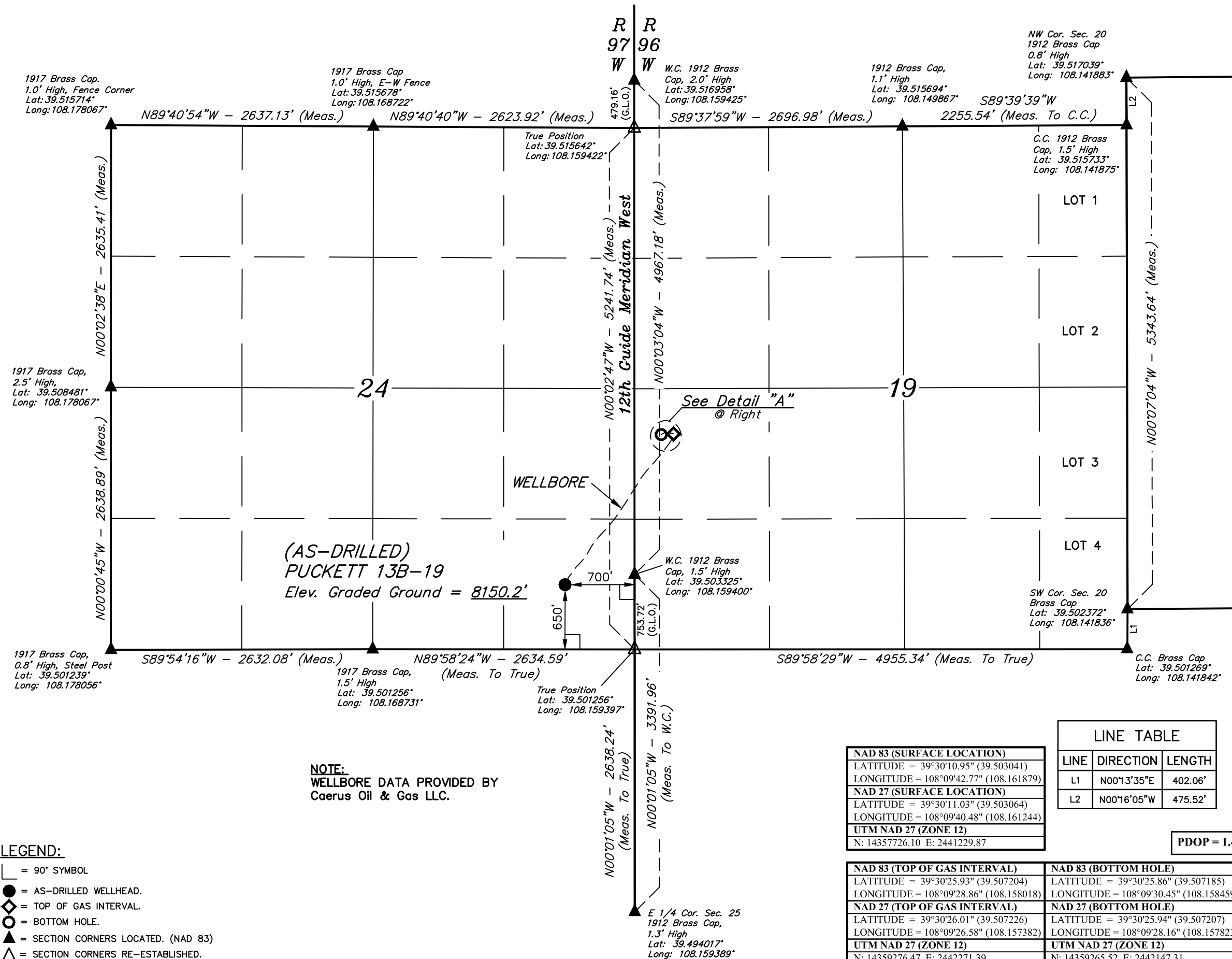
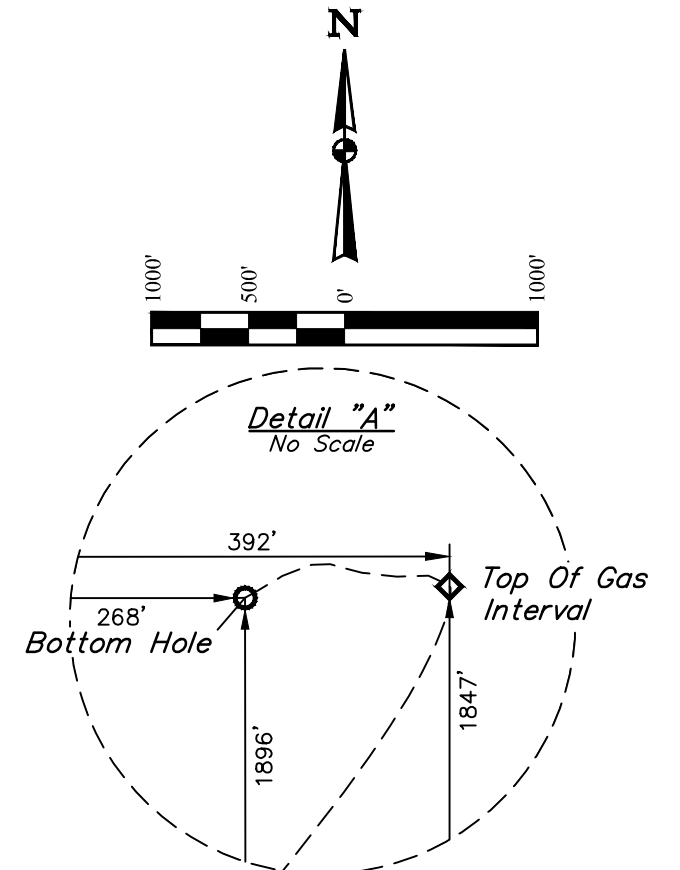


T6S, R97W, 6th P.M.



BASIS OF BEARINGS
BASIS OF BEARINGS IS A G.P.S. OBSERVATION
BASIS OF ELEVATION

SPOT ELEVATION AT THE NORTHWEST CORNER OF SECTION 30,
T5S, R95W, 6th P.M., TAKEN FROM THE FORKED GULCH,
QUADRANGLE, COLORADO, GARFIELD COUNTY, 7.5 MINUTE
QUAD. (TOPOGRAPHIC MAP) PUBLISHED BY THE UNITED STATES
DEPARTMENT OF THE INTERIOR, GEOLOGICAL SURVEY. SAID
ELEVATION IS MARKED AS BEING 5966 FEET.



THIS IS TO CERTIFY THAT THE ABOVE PLATS WERE PREPARED AND
LOCATION AS SHOWN WAS STAKED ON THE GROUND FROM FIELD NOTES
OF ACTUAL SURVEYS MADE BY ME OR UNDER MY SUPERVISION AND THAT
THE SAME ARE TRUE AND CORRECT TO THE BEST OF MY KNOWLEDGE AND
BELIEF.

Handwritten Signature: Harold Marshall

REGISTERED LAND SURVEYOR
REGISTRATION NO. 10180
STATE OF COLORADO

64-05-18

Caerus Oil & Gas LLC

(AS-DRILLED) PUCKETT 13B-19
SE 1/4 SE 1/4, SECTION 24, T6S, R97W, 6th P.M.
GARFIELD COUNTY, COLORADO

SURVEYED BY	BART HUNTING, D.P.	03-21-18	SCALE
DRAWN BY	T.L.L.	03-23-18	1" = 1000'

AS-DRILLED WELL LOCATION PLAT