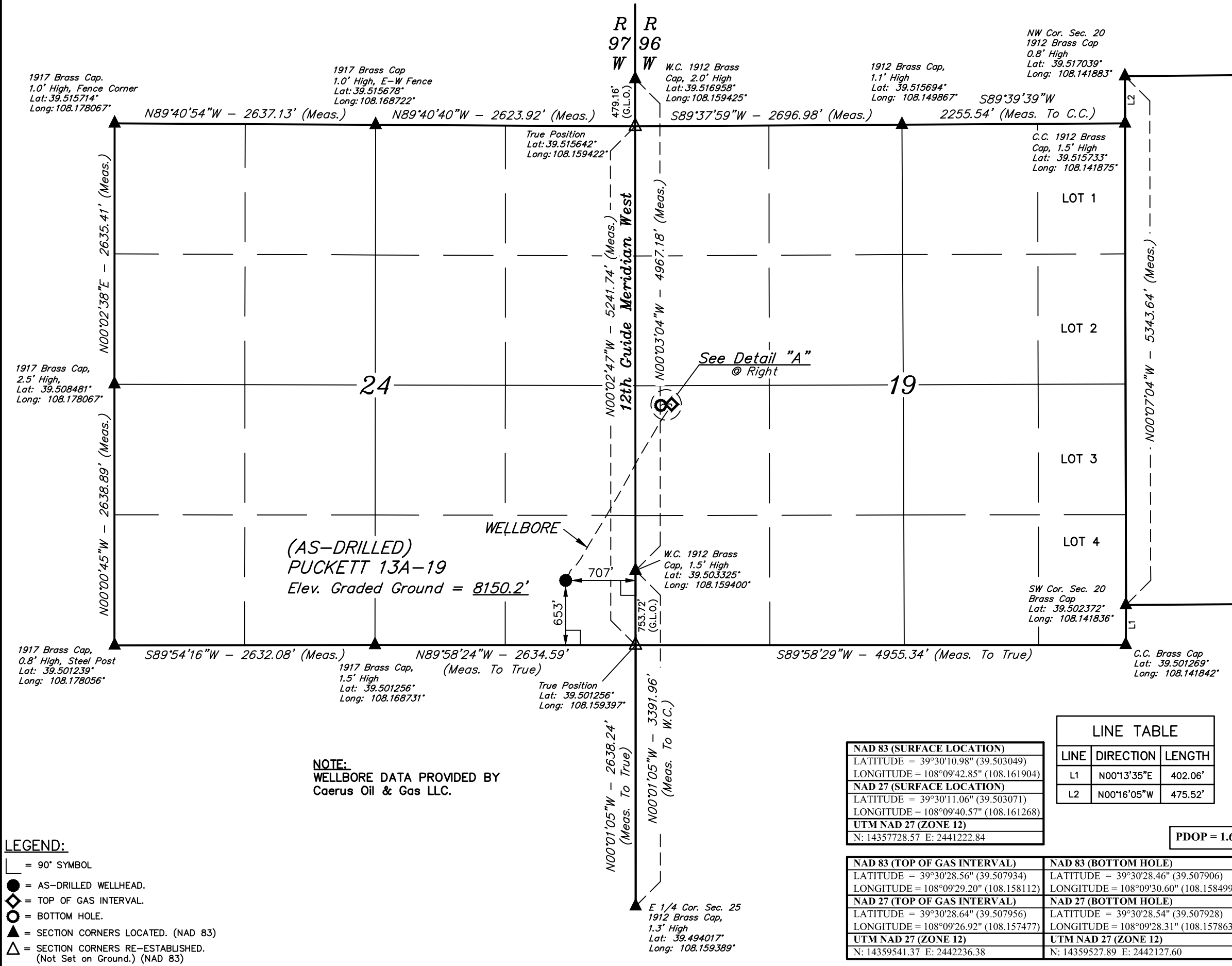
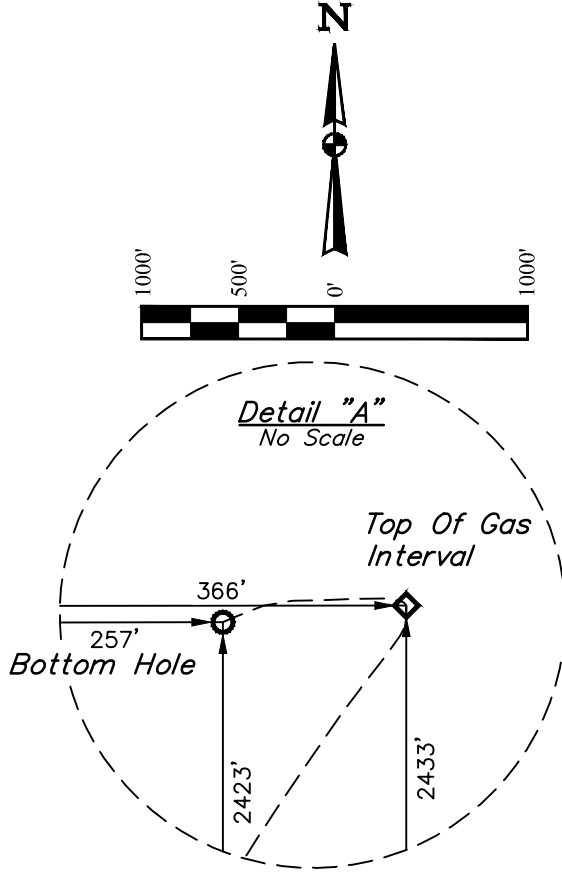


T6S, R97W, 6th P.M.



**BASIS OF BEARINGS**  
BASIS OF BEARINGS IS A G.P.S. OBSERVATION

**BASIS OF ELEVATION**  
SPOT ELEVATION AT THE NORTHWEST CORNER OF SECTION 30, T5S, R95W, 6th P.M., TAKEN FROM THE FORKED GULCH, QUADRANGLE, COLORADO, GARFIELD COUNTY, 7.5 MINUTE QUAD. (TOPOGRAPHIC MAP) PUBLISHED BY THE UNITED STATES DEPARTMENT OF THE INTERIOR, GEOLOGICAL SURVEY. SAID ELEVATION IS MARKED AS BEING 5966 FEET.



**CERTIFICATE**

THIS IS TO CERTIFY THAT THE ABOVE PLAT WAS PREPARED AND LOCATION AS SHOWN WAS STAKED ON THE GROUND FROM FIELD NOTES OF ACTUAL SURVEYS MADE BY ME OR UNDER MY SUPERVISION AND THAT THE SAME ARE TRUE AND CORRECT TO THE BEST OF MY KNOWLEDGE AND BELIEF.

38130

REGISTERED LAND SURVEYOR  
REGISTRATION NO. 19160  
STATE OF COLORADO

**LEGEND:**

└─┘ = 90° SYMBOL

● = AS-DRILLED WELLHEAD.

◆ = TOP OF GAS INTERVAL.

○ = BOTTOM HOLE.

▲ = SECTION CORNERS LOCATED. (NAD 83)

△ = SECTION CORNERS RE-ESTABLISHED. (Not Set on Ground.) (NAD 83)

NAD 83 (SURFACE LOCATION)	
LATITUDE	= 39°30'10.98" (39.503049)
LONGITUDE	= 108°09'42.85" (108.161904)
NAD 27 (SURFACE LOCATION)	
LATITUDE	= 39°30'11.06" (39.503071)
LONGITUDE	= 108°09'40.57" (108.161268)
UTM NAD 27 (ZONE 12)	
N	= 14357728.57 E: 2441222.84

LINE TABLE		
LINE	DIRECTION	LENGTH
L1	N00°13'35"E	402.06'
L2	N00°16'05"W	475.52'

PDOP = 1.6

NAD 83 (TOP OF GAS INTERVAL)	NAD 83 (BOTTOM HOLE)
LATITUDE = 39°30'28.56" (39.507934)	LATITUDE = 39°30'28.46" (39.507906)
LONGITUDE = 108°09'29.20" (108.158112)	LONGITUDE = 108°09'30.60" (108.158499)
NAD 27 (TOP OF GAS INTERVAL)	NAD 27 (BOTTOM HOLE)
LATITUDE = 39°30'28.64" (39.507956)	LATITUDE = 39°30'28.54" (39.507928)
LONGITUDE = 108°09'26.92" (108.157477)	LONGITUDE = 108°09'28.31" (108.157863)
UTM NAD 27 (ZONE 12)	UTM NAD 27 (ZONE 12)
N: 14359541.37 E: 2442236.38	N: 14359527.89 E: 2442127.60

**Caerus Oil & Gas LLC**

**(AS-DRILLED) PUCKETT 13A-19**  
**SE 1/4 SE 1/4, SECTION 24, T6S, R97W, 6th P.M.**  
**GARFIELD COUNTY, COLORADO**

<b>SURVEYED BY</b>	BART HUNTING, D.P.	03-21-18	<b>SCALE</b>
<b>DRAWN BY</b>	T.L.L.	03-23-18	1" = 1000'

**AS-DRILLED WELL LOCATION PLAT**