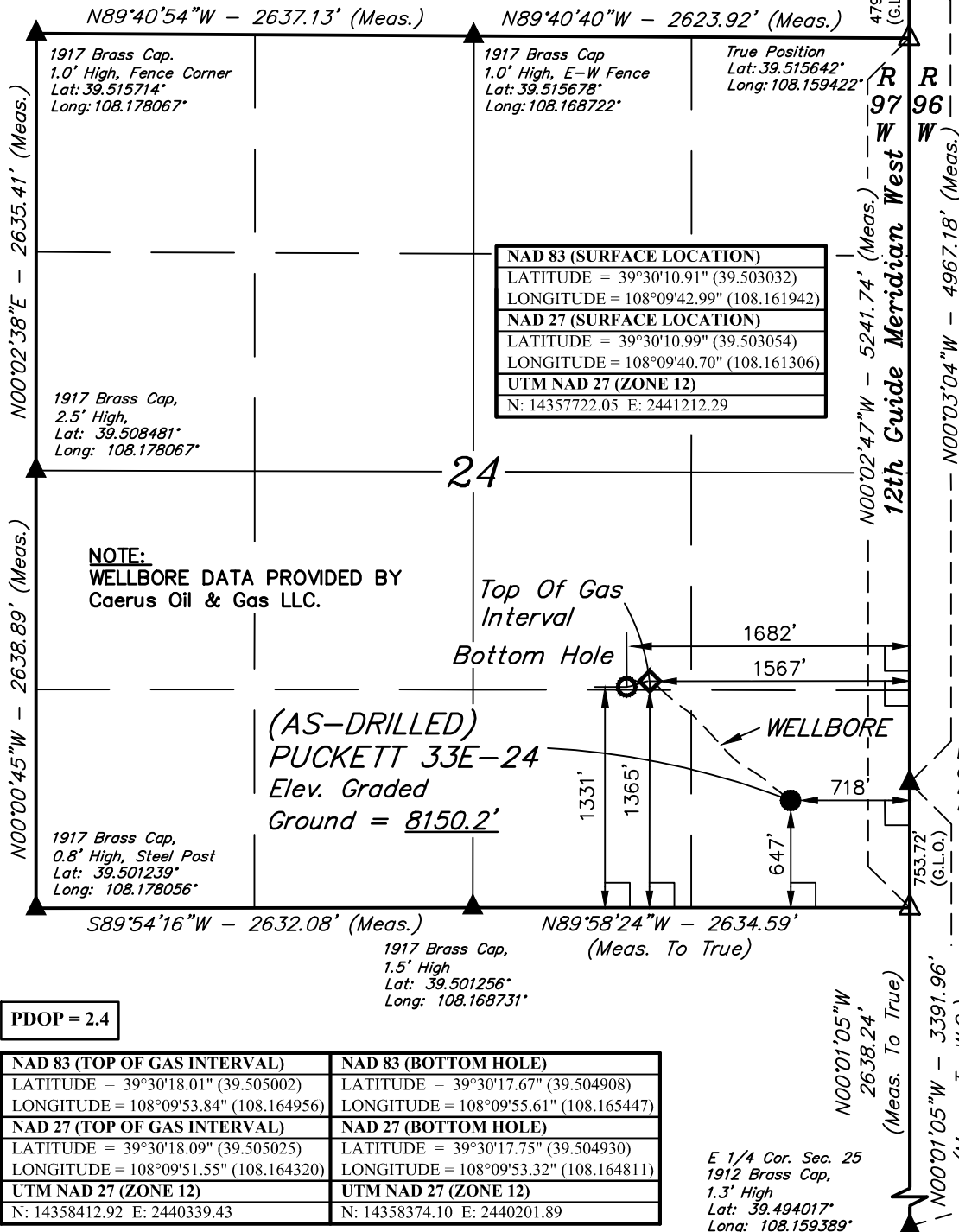


# T6S, R97W, 6th P.M.

W.C. 1912 Brass  
Cap, 2.0' High  
Lat: 39.516958°  
Long: 108.159425°



NAD 83 (SURFACE LOCATION)	
LATITUDE = 39°30'10.91" (39.503032)	
LONGITUDE = 108°09'42.99" (108.161942)	
NAD 27 (SURFACE LOCATION)	
LATITUDE = 39°30'10.99" (39.503054)	
LONGITUDE = 108°09'40.70" (108.161306)	
UTM NAD 27 (ZONE 12)	
N: 14357722.05 E: 2441212.29	



### LEGEND:

- └─ = 90° SYMBOL
- = AS-DRILLED WELLHEAD.
- ◊ = TOP OF GAS INTERVAL.
- = BOTTOM HOLE.
- ▲ = SECTION CORNERS LOCATED. (NAD 83)
- △ = SECTION CORNERS RE-ESTABLISHED. (Not Set on Ground.) (NAD 83)

### BASIS OF BEARINGS

BASIS OF BEARINGS IS A G.P.S. OBSERVATION

### BASIS OF ELEVATION

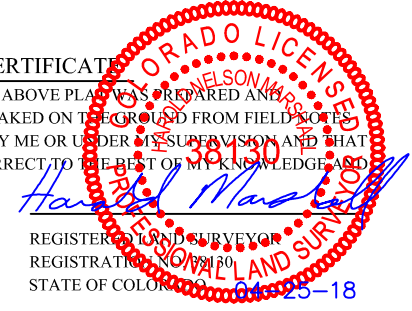
SPOT ELEVATION AT THE NORTHWEST CORNER OF SECTION 30, T5S, R95W, 6th P.M., TAKEN FROM THE FORKED GULCH, QUADRANGLE, COLORADO, GARFIELD COUNTY, 7.5 MINUTE QUAD. (TOPOGRAPHIC MAP) PUBLISHED BY THE UNITED STATES DEPARTMENT OF THE INTERIOR, GEOLOGICAL SURVEY. SAID ELEVATION IS MARKED AS BEING 5966 FEET.

W.C. 1912 Brass  
Cap, 1.5' High  
Lat: 39.503325°  
Long: 108.159400°

True Position  
Lat: 39.501256°  
Long: 108.159397°

### CERTIFICATE

THIS IS TO CERTIFY THAT THE ABOVE PLAT WAS PREPARED AND THE LOCATION AS SHOWN WAS STAKED ON THE GROUND FROM FIELD NOTES OF ACTUAL SURVEYS MADE BY ME OR UNDER MY SUPERVISION AND THAT THE SAME ARE TRUE AND CORRECT TO THE BEST OF MY KNOWLEDGE AND BELIEF.



REGISTERED LAND SURVEYOR  
REGISTRATION NO. 38130  
STATE OF COLORADO 04-25-18

## Caerus Oil & Gas LLC

**(AS-DRILLED) PUCKETT 33E-24**  
SE 1/4 SE 1/4, SECTION 24, T6S, R97W, 6th P.M.  
GARFIELD COUNTY, COLORADO

<b>SURVEYED BY</b>	BART HUNTING, D.P.	03-21-18	<b>SCALE</b>
<b>DRAWN BY</b>	T.L.L.	04-20-18	1" = 1000'

## AS-DRILLED WELL LOCATION PLAT

E 1/4 Cor. Sec. 25  
1912 Brass Cap,  
1.3' High  
Lat: 39.494017°  
Long: 108.159389°