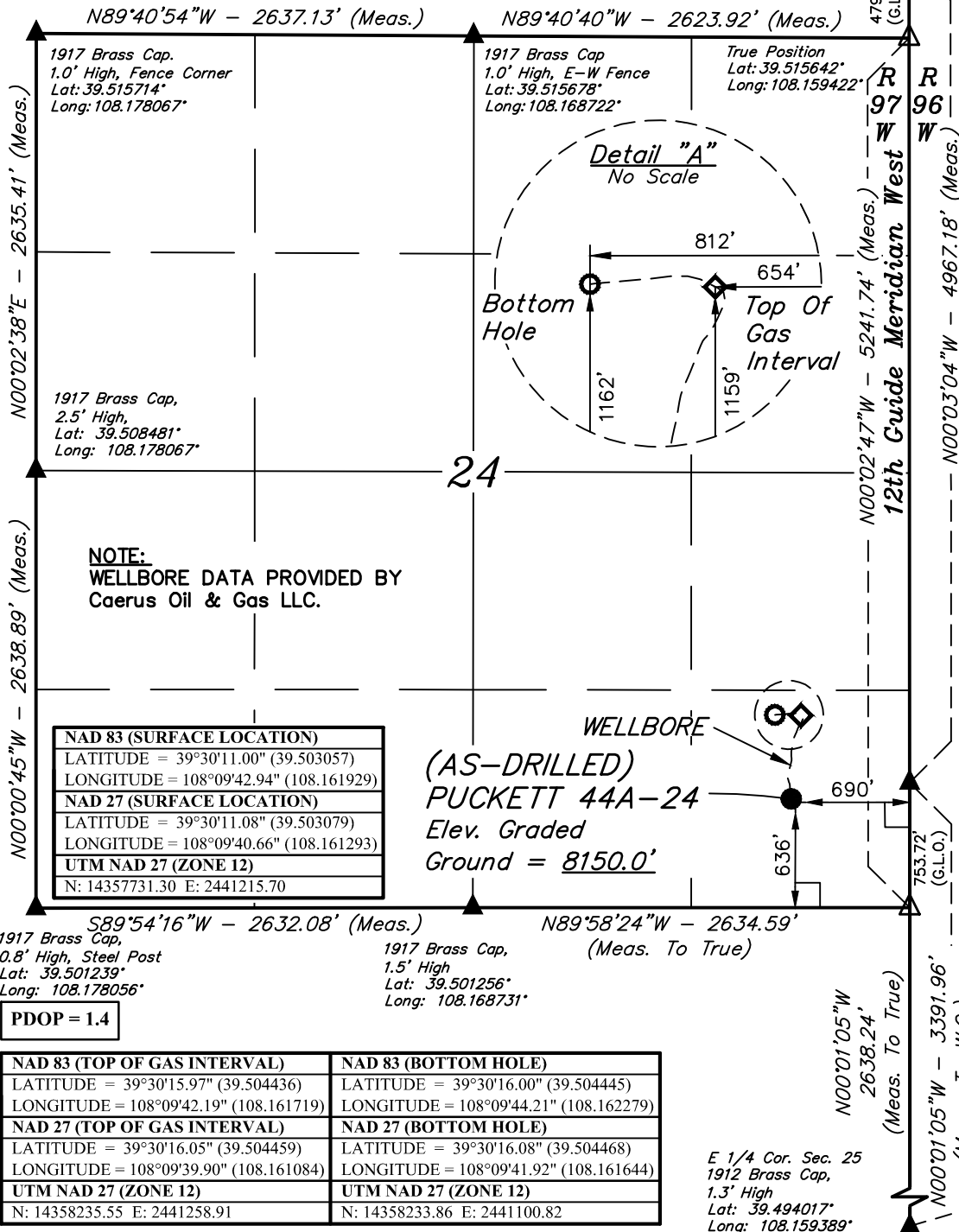


T6S, R97W, 6th P.M.

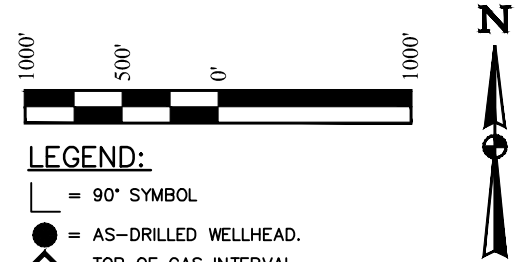
W.C. 1912 Brass
Cap, 2.0' High
Lat: 39.516958°
Long: 108.159425°



BASIS OF BEARINGS
BASIS OF BEARINGS IS A G.P.S. OBSERVATION

BASIS OF ELEVATION

SPOT ELEVATION AT THE NORTHWEST CORNER OF SECTION 30, T5S, R95W, 6th P.M., TAKEN FROM THE FORKED GULCH, QUADRANGLE, COLORADO, GARFIELD COUNTY, 7.5 MINUTE QUAD. (TOPOGRAPHIC MAP) PUBLISHED BY THE UNITED STATES DEPARTMENT OF THE INTERIOR, GEOLOGICAL SURVEY. SAID ELEVATION IS MARKED AS BEING 5966 FEET.



LEGEND:

- └─┘ = 90° SYMBOL
- = AS-DRILLED WELLHEAD.
- ◇ = TOP OF GAS INTERVAL.
- = BOTTOM HOLE.
- ▲ = SECTION CORNERS LOCATED. (NAD 83)
- △ = SECTION CORNERS RE-ESTABLISHED. (Not Set on Ground.) (NAD 83)

NOTE:
WELLBORE DATA PROVIDED BY
Caerus Oil & Gas LLC.

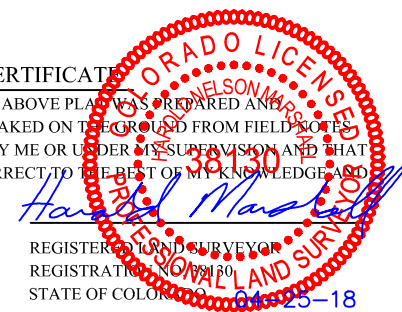
NAD 83 (SURFACE LOCATION)	
LATITUDE = 39°30'11.00" (39.503057)	
LONGITUDE = 108°09'42.94" (108.161292)	
NAD 27 (SURFACE LOCATION)	
LATITUDE = 39°30'11.08" (39.503079)	
LONGITUDE = 108°09'40.66" (108.161293)	
UTM NAD 27 (ZONE 12)	
N: 14357731.30 E: 2441215.70	

WELLBORE
(AS-DRILLED)
PUCKETT 44A-24
Elev. Graded
Ground = 8150.0'

W.C. 1912 Brass
Cap, 1.5' High
Lat: 39.503325°
Long: 108.159400°

True Position
Lat: 39.501256°
Long: 108.159397°

CERTIFICATE OF SURVEY
THIS IS TO CERTIFY THAT THE ABOVE PLAT WAS PREPARED AND THE LOCATION AS SHOWN WAS STAKED ON THE GROUND FROM FIELD NOTES OF ACTUAL SURVEYS MADE BY ME OR UNDER MY SUPERVISION AND THAT THE SAME ARE TRUE AND CORRECT TO THE BEST OF MY KNOWLEDGE AND BELIEF.



REGISTERED LAND SURVEYOR
REGISTRATION NO. 38130
STATE OF COLORADO

Caerus Oil & Gas LLC

(AS-DRILLED) PUCKETT 44A-24
SE 1/4 SE 1/4, SECTION 24, T6S, R97W, 6th P.M.
GARFIELD COUNTY, COLORADO

SURVEYED BY	BART HUNTING, D.P.	03-21-18	SCALE
DRAWN BY	T.L.L.	04-20-18	1" = 1000'

AS-DRILLED WELL LOCATION PLAT

PDOP = 1.4

NAD 83 (TOP OF GAS INTERVAL)	NAD 83 (BOTTOM HOLE)
LATITUDE = 39°30'15.97" (39.504436)	LATITUDE = 39°30'16.00" (39.504445)
LONGITUDE = 108°09'42.19" (108.161719)	LONGITUDE = 108°09'44.21" (108.162279)
NAD 27 (TOP OF GAS INTERVAL)	NAD 27 (BOTTOM HOLE)
LATITUDE = 39°30'16.05" (39.504459)	LATITUDE = 39°30'16.08" (39.504468)
LONGITUDE = 108°09'39.90" (108.161084)	LONGITUDE = 108°09'41.92" (108.161644)
UTM NAD 27 (ZONE 12)	
N: 14358235.55 E: 2441258.91	N: 14358233.86 E: 2441100.82

E 1/4 Cor. Sec. 25
1912 Brass Cap,
1.3' High
Lat: 39.494017°
Long: 108.159389°