

HALLIBURTON

iCem[®] Service

TERRA ENERGY PARTNERS

For: Terra

Date: Sunday, March 11, 2018

TRI STATE TRUCKING PA 321-25 Surface

API#05-045-23644

Sincerely,

Grand Junction Cement Engineering

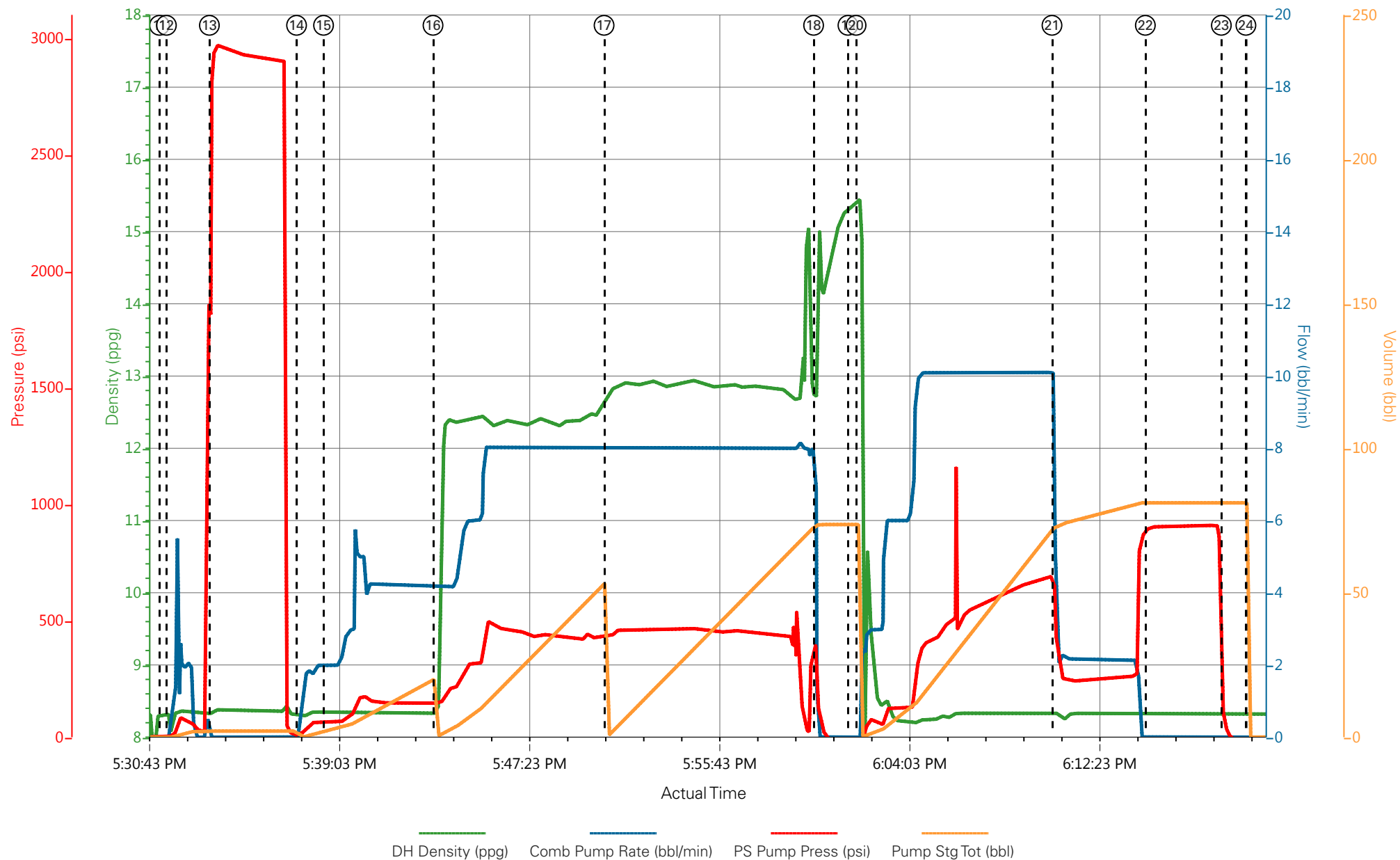
2.0 Real-Time Job Summary

2.1 Job Event Log

Type	Seq. No.	Graph Label	Date	Time	Source	Downhole Density (ppg)	Combined Pump Rate (bbl/min)	Pass-Side Pump Pressure (psi)	Pump Stage Total (bbl)	Comments
Event	1	Call Out	3/11/2018	10:00:00	USER					ON LOCATION TIME 15:00
Event	2	Pre-Convoy Safety Meeting	3/11/2018	12:00:00	USER					JOURNEY CREATED - ALL HES INVOLVED IN SAFETY MEETING
Event	3	Crew Leave Yard	3/11/2018	12:10:00	USER					1-F-550 PICKUP, 1-ELITE PUMP TRUCK, 1-660 BULK TRUCK
Event	4	Arrive At Loc	3/11/2018	14:00:00	USER					HES ARRIVED 1-HOUR EARLY
Event	5	Assessment Of Location Safety Meeting	3/11/2018	14:15:00	USER					RIG WAS RUNNING CASING - HES REP SPOKE WITH COMPANY REP
Event	6	Pre-Rig Up Safety Meeting	3/11/2018	14:30:00	USER					SPOTTED EQUIPMENT - JSA FILLED OUT AND REVIEWED BY ALL HES
Event	7	Rig-Up Equipment	3/11/2018	14:45:00	USER					RIG-UP IRON TO THE RIG FLOOR - WATER HOSES TO BOTH RIG UPRIGHTS - BULK TRUCK TO PUMP TRUCK
Event	8	Rig-Up Completed	3/11/2018	15:45:00	USER					COMPLETED SAFELY
Event	9	Well Info/Water Test	3/11/2018	16:02:00	USER					TD: 1136FT TP: 1131FT SJ: 44.19FT OH: 13 1/2" CSG: 9 5/8" 36# J-55 MUD WT: 9.5 - WTR TEST: TEMP: 55 CHLOR: 0 PH: 7
Event	10	Pre-Job Safety Meeting	3/11/2018	16:30:00	USER					ALL HES, RIG CREW AND COMPANY REP IN ATTENDANCE
Event	11	Start Job	3/11/2018	17:31:18	COM5					START JOB
Event	12	Fill Lines	3/11/2018	17:31:36	USER	8.34	2	85	2	FILL LINES WITH 2BBLs OF WATER TO PRESSURE TEST
Event	13	Test Lines	3/11/2018	17:33:29	COM5			2973		PRESSURE TEST LINES TO 2973PSI - PRESSURE TEST OK
Event	14	Fresh Water Spacer	3/11/2018	17:37:19	COM5	8.34	4	150	20	20BBL FRESH WATER SPACER PUMPED AT 4BPM PRESSURE WAS 150PSI
Event	15	Check weight	3/11/2018	17:38:30	COM5					VERIFIED WEIGHT OF FIRST TUB OF CEMENT VIA

										PRESSURIZED MUD SCALES
Event	16	Pump Lead Cement	3/11/2018	17:43:18	COM5	12.3	8	450	52.9	125SKS OF VARICEM CEMENT (52.9BBL) 12.3PPG 2.38YIELD 13.77GAL/SK WEIGHT OF CEMENT VERIFIED VIA PRESSURIZED MUD SCALES THROUGHOUT LEAD CEMENT
Event	17	Pump Tail Cement	3/11/2018	17:50:48	COM5	12.8	8	470	65.7	175SKS OF VARICEM CEMENT (65.7BBL) 12.8PPG 2.11YIELD 11.78GAL/SK WEIGHT OF CEMENT VERIFIED VIA PRESSURIZED MUD SCALES THROUGHOUT TAIL CEMENT
Event	18	Shutdown	3/11/2018	17:59:59	USER					SHUTDOWN END OF CEMENT - HES WASHED UP ON TOP OF THE PLUG - READY TANKS FOR DISPLACEMENT
Event	19	Drop Top Plug	3/11/2018	18:01:29	USER					TOP PLUG LAUNCHED NO PROBLEMS
Event	20	Pump Displacement	3/11/2018	18:01:51	COM5	8.34	10	705	74	FRESH WATER DISPLACEMENT
Event	21	Slow Rate	3/11/2018	18:10:26	USER	8.34	2	270	10	SLOW RATE TO BUMP THE PLUG - PRESSURE PRIOR TO SLOWING WAS 705PSI AT 10BPM - PRESSURE AFTER SLOWING WAS 270PSI AT 2BPM
Event	22	Bump Plug	3/11/2018	18:14:32	COM5	8.34	2	300	84	PLUG BUMPED AT CALCULATED DISPLACEMENT - PLUG BUMPED AT 300PSI AT 2BPM AND TOOK TO 906PSI
Event	23	Check Floats	3/11/2018	18:17:52	COM5			906		FLOATS HELD .5BBL BACK TO TANKS - 15BBL OF CEMENT TO SURFACE - RIG USED 40 POUNDS OF SUGAR
Event	24	End Job	3/11/2018	18:18:56	COM5					THANK YOU FOR CHOOSING HALLIBURTON CEMENT CARL KUKUS AND CREW
Event	25	Pre-Rig Down Safety Meeting	3/11/2018	18:20:00	USER					JSA REVIEWED - ALL HES INVOLVED IN SAFETY MEETING
Event	26	Rig-Down Equipment	3/11/2018	18:25:00	USER					WASH UP AND BLOW DOWN PUMP TRUCK - RIG DOWN ALL LINES AND EQUIPMENT
Event	27	Rig-Down Completed	3/11/2018	19:25:00	USER					COMPLETED SAFELY
Event	28	Pre-Convoy Safety Meeting	3/11/2018	19:30:00	USER					JOURNEY CREATED - ALL HES INVOLVED IN SAFETY MEETING
Event	29	Crew Leave Location	3/11/2018	19:35:00	USER					1-F-550 PICKUP, 1-ELITE PUMP TRUCK, 1-660 BULK TRUCK

TEP - TRI STATE TRUCKING PA 321-25 - 904692586 - 9 5/8" SURFACE



- | | | | | | | | |
|-----------------------------|-------------------|---|--------------------|--------------------------|--------------|----------------------|----------------|
| ① Call Out | ③ Crew Leave Yard | ⑤ Assessment Of Location Safety Meeting | ⑦ Rig-Up Equipment | ⑨ Well Info/Water Test | ⑪ Start Job | ⑬ Test Lines | ⑮ Check weight |
| ② Pre-Convoy Safety Meeting | ④ Arrive At Loc | ⑥ Pre-Rig Up Safety Meeting | ⑧ Rig-Up Completed | ⑩ Pre-Job Safety Meeting | ⑫ Fill Lines | ⑭ Fresh Water Spacer | ⑯ Pump Lead |

TEP - TRI STATE TRUCKING PA 321-25 - 904692586 - 9 5/8" SURFACE

