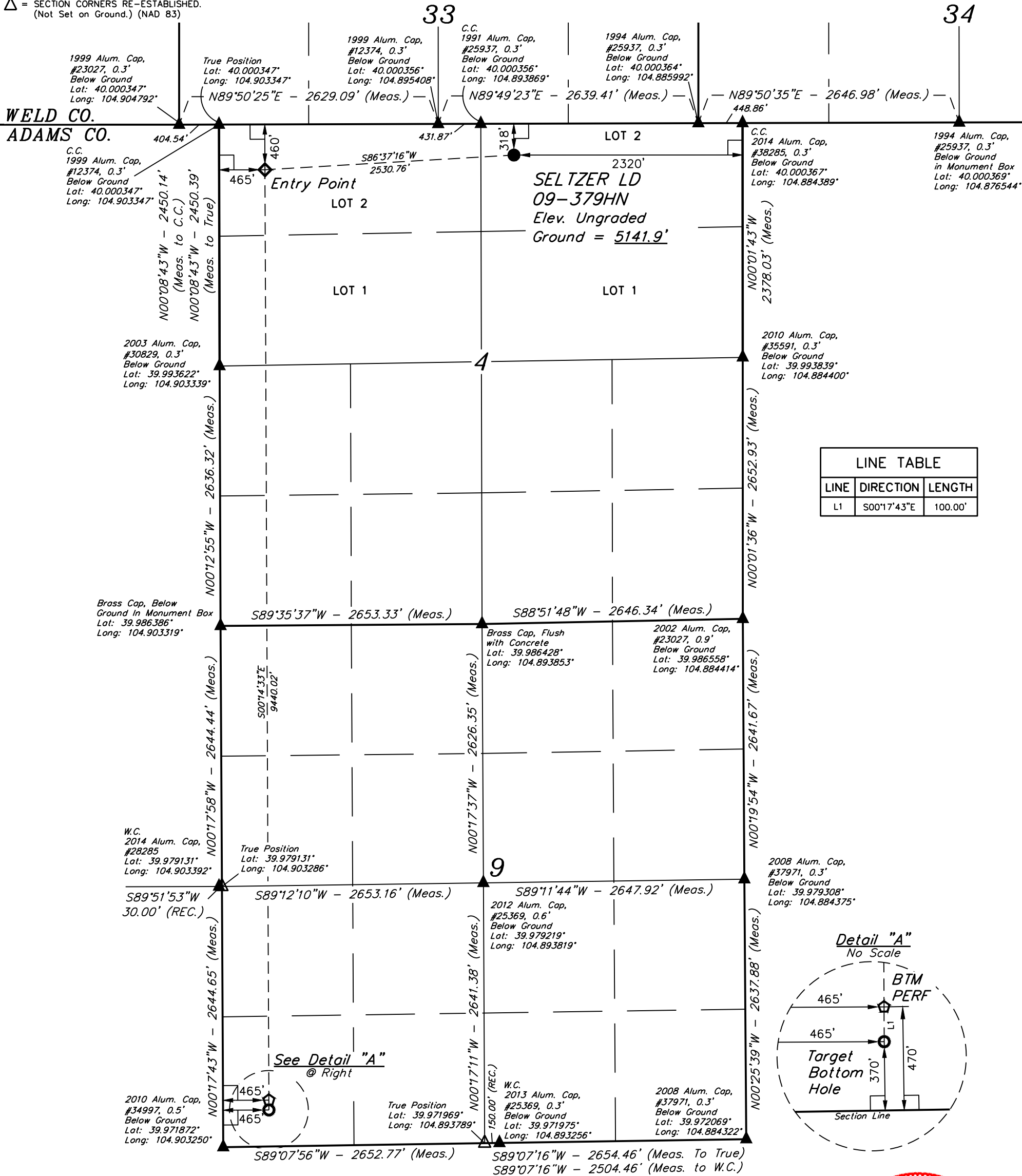


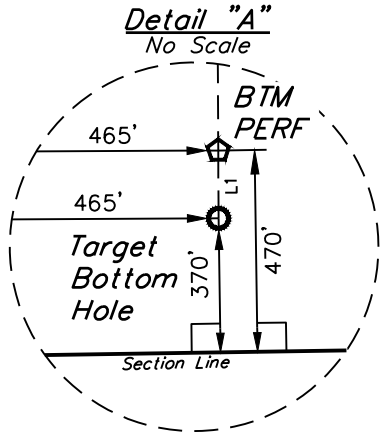
LEGEND:

- = 90° SYMBOL
- = PROPOSED WELLHEAD.
- = TARGET BOTTOM HOLE.
- = ENTRY POINT.
- = BTM PERF.
- = SECTION CORNERS LOCATED. (NAD 83)
- = SECTION CORNERS RE-ESTABLISHED. (Not Set on Ground.) (NAD 83)

T1S, R67W, 6th P.M.



| LINE TABLE |             |         |
|------------|-------------|---------|
| LINE       | DIRECTION   | LENGTH  |
| L1         | S00°17'43"E | 100.00' |



| NAD 83 (SURFACE LOCATION)              | NAD 83 (ENTRY POINT)                   | NAD 83 (BTM PERF)                      | NAD 83 (TARGET BOTTOM HOLE)            |
|--|--|--|--|
| LATITUDE = 39°59'58.14" (39.999484)    | LATITUDE = 39°59'56.71" (39.999086)    | LATITUDE = 39°58'23.44" (39.973178)    | LATITUDE = 39°58'22.46" (39.972906)    |
| LONGITUDE = 104°53'33.62" (104.892671) | LONGITUDE = 104°54'06.07" (104.901686) | LONGITUDE = 104°54'05.75" (104.901597) | LONGITUDE = 104°54'05.75" (104.901597) |
| NAD 27 (SURFACE LOCATION)              | NAD 27 (ENTRY POINT)                   | NAD 27 (BTM PERF)                      | NAD 27 (TARGET BOTTOM HOLE)            |
| LATITUDE = 39°59'58.20" (39.999500)    | LATITUDE = 39°59'56.77" (39.999103)    | LATITUDE = 39°58'23.50" (39.973194)    | LATITUDE = 39°58'22.51" (39.972919)    |
| LONGITUDE = 104°53'31.70" (104.892140) | LONGITUDE = 104°54'04.16" (104.901156) | LONGITUDE = 104°54'03.84" (104.901067) | LONGITUDE = 104°54'03.84" (104.901067) |

CERTIFICATE OF REGISTRATION  
THIS IS TO CERTIFY THAT THE ABOVE DRAWN MAP WAS PREPARED FROM FIELD NOTES OF ACTUAL SURVEYS MADE BY ME OR UNDER MY SUPERVISION AND THAT THE SAME ARE TRUE AND CORRECT TO THE BEST OF MY KNOWLEDGE AND BELIEF.  
JAMES FRESHWATER, N.W.  
REGISTERED LAND SURVEYOR  
RECORDATION NO. 28285  
STATE OF COLORADO  
04-19-18

BASIS OF BEARINGS  
BASIS OF BEARINGS IS A G.P.S. OBSERVATION  
BASIS OF ELEVATION

BENCHMARK JR 53 5026 LOCATED IN THE SW 1/4 SE 1/4 OF SECTION 18, T1N, R68W, 6th P.M., TAKEN FROM 1988 PUBLISHED DATUM BY THE UNITED STATES DEPARTMENT OF THE INTERIOR, GEOLOGICAL SURVEY AS BEING 5028 FEET.



UELS, LLC  
Corporate Office \* 85 South 200 East  
Vernal, UT 84078 \* (435) 789-1017



GREAT WESTERN OPERATING COMPANY

SELTZER LD 09-379HN  
NW 1/4 NE 1/4, SECTION 4, T1S, R67W, 6th P.M.  
ADAMS COUNTY, COLORADO

|             |                        |          |            |
|-------------|------------------------|----------|------------|
| SURVEYED BY | JAMES FRESHWATER, N.W. | 04-19-18 | SCALE      |
| DRAWN BY    | D.COX                  | 01-13-17 | 1" = 1000' |

WELL LOCATION PLAT