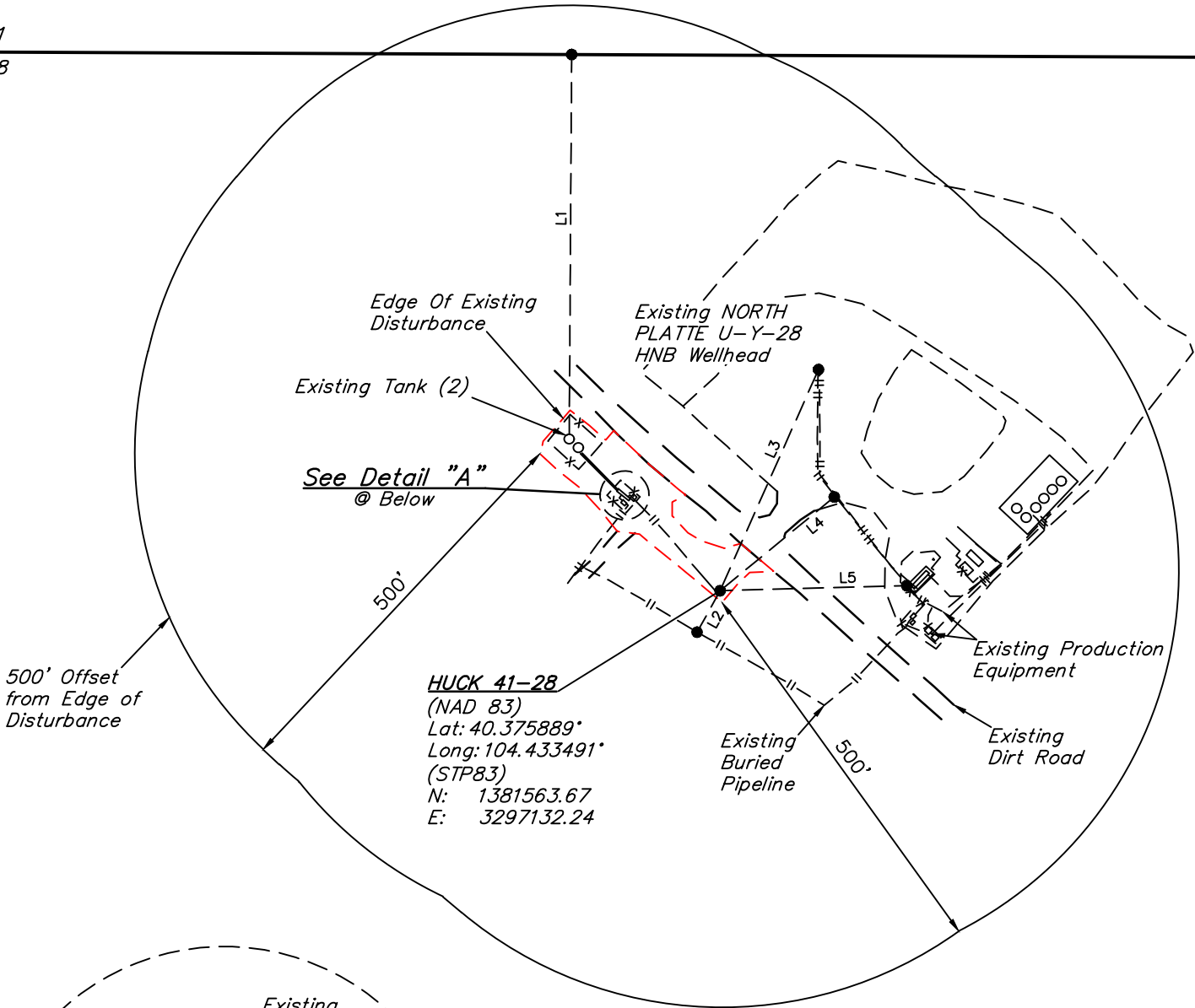


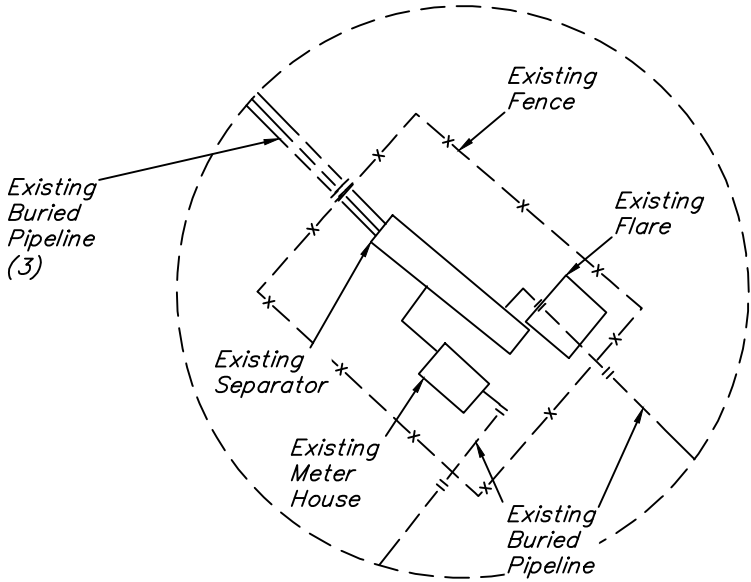
LINE TABLE		
LINE	DIRECTION	LENGTH
L1	NORTH	469'
L2	S29°W	59'
L3	N24°E	299'
L4	N51°E	183'
L5	N88°E	230'



SECTION 21
SECTION 28



HUCK 41-28
(NAD 83)
Lat: 40.375889°
Long: 104.433491°
(STP83)
N: 1381563.67
E: 3297132.24



Detail "A"
No Scale

Property Line

SECTION 28
SECTION 27

NOTES:

**BONANZA CREEK ENERGY
OPERATING COMPANY, LLC**

**HUCK 41-28 PAD
NE 1/4 NE 1/4, SECTION 28, T5N, R63W, 6th P.M.
WELD COUNTY, COLORADO**

SURVEYED BY	D.N.	08-15-16	SCALE
DRAWN BY	C.IVIE	03-06-18	1" = 200'

LOCATION DRAWING



UELS, LLC
Corporate Office * 85 South 200 East
Vernal, UT 84078 * (435) 789-1017