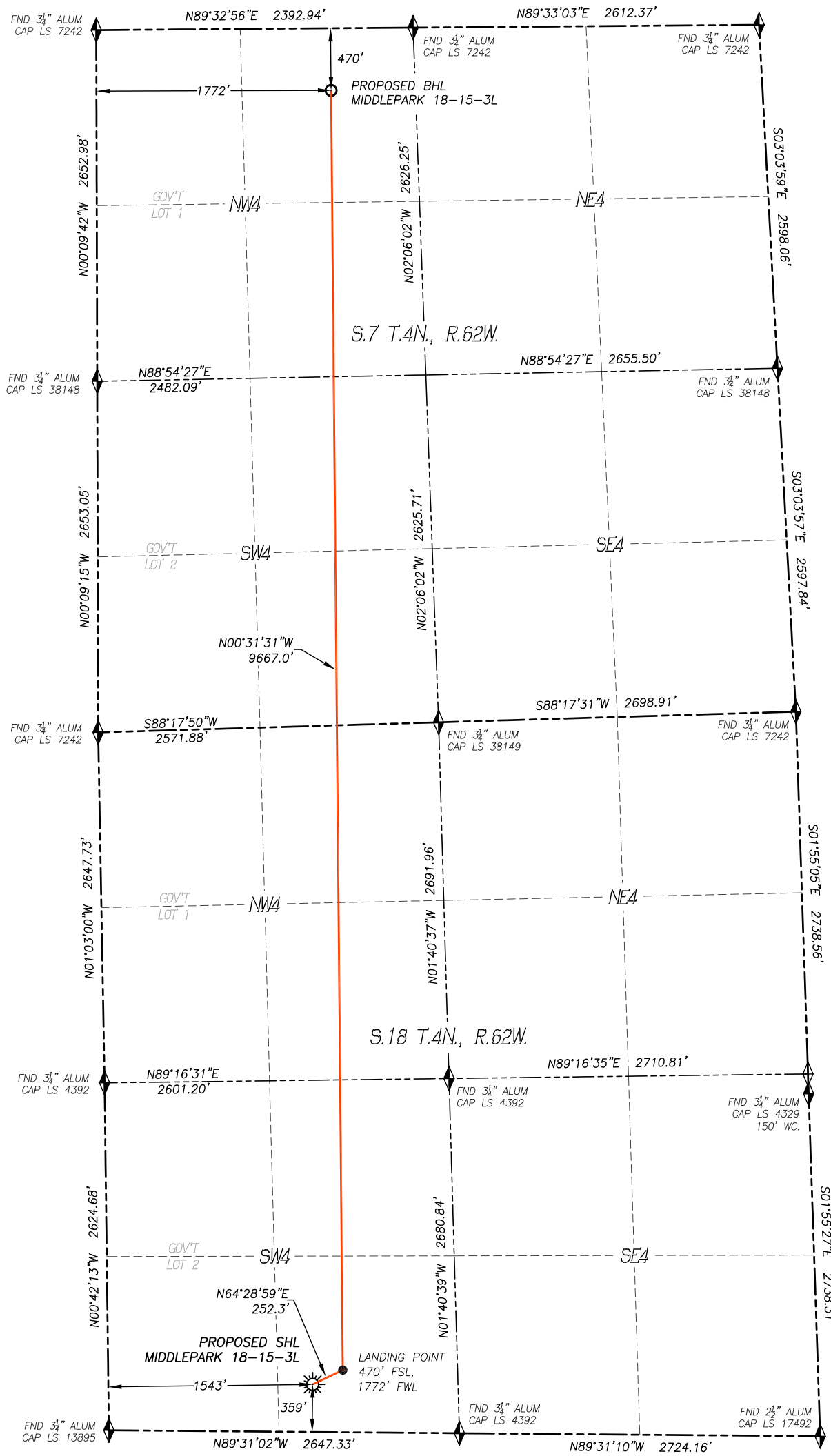


WELL LOCATION CERTIFICATE
MIDDLEPARK 18-15-3L
 SECTION 18, TOWNSHIP 4 NORTH, RANGE 62 WEST OF THE 6TH P.M.



IN ACCORDANCE WITH A REQUEST FROM CONFLUENCE RESOURCES, DALEY LAND SURVEYING, INC. HAS DETERMINED THE SURFACE LOCATION OF THE MIDDLEPARK 18-15-3L WELL TO BE 359' FSL, 1543' FWL, AS MEASURED AT NINETY (90) DEGREES FROM THE SECTION LINES OF SECTION 18, TOWNSHIP 4 NORTH, RANGE 62 WEST, AND THE BOTTOM HOLE LOCATION TO BE 470' FSL, 1772' FWL, AS MEASURED AT NINETY (90) DEGREES FROM THE SECTION LINES OF SECTION 7, TOWNSHIP 4 NORTH, RANGE 62 WEST, OF THE 6TH PRINCIPAL MERIDIAN, WELD COUNTY, COLORADO.

I HEREBY STATE THAT THIS WELL LOCATION CERTIFICATE WAS PREPARED BY ME OR UNDER MY DIRECT SUPERVISION, THAT THE WORK WAS COMPLETED ON 4/16/2018 FOR AND ON BEHALF OF CONFLUENCE RESOURCES, AND THAT THIS MAP DOES NOT REPRESENT A BOUNDARY SURVEY, IT IS NOT A LAND SURVEY PLAT OR AN IMPROVEMENT SURVEY PLAT AND IT IS NOT TO BE RELIED UPON FOR THE ESTABLISHMENT OF FENCE, BUILDING OR OTHER FUTURE IMPROVEMENT LINES.

NOTES:

1. BEARINGS FOR THIS MAP ARE ASSUMED AND BASED UPON GPS OBSERVATIONS MADE BETWEEN MONUMENTS LOCATED AT THE SOUTH QUARTER CORNER AND THE SOUTHWEST CORNER OF SECTION 18, T.4N., R.62W.
2. HORIZONTAL DATUM IS NAD83.
3. VERTICAL DATUM IS NAVD88 AND ORIGINATES FROM THE LOCAL C.O.R.S. NETWORK, UTILIZING THE GEOID12A MODEL.
4. SEE LOCATION DRAWING FOR VISIBLE IMPROVEMENTS WITHIN 500' OF PROPOSED DISTURBED AREA.
5. SURFACE USE: WELL PAD/RANGELAND.
6. INST. OPERATOR: KYLE DALEY



FOR AND ON BEHALF OF
 DALEY LAND SURVEYING, INC.,
 Robert Daley, PLS 35597

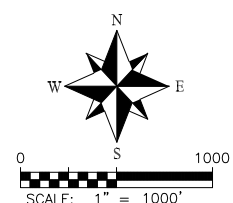
NEAREST CULTURAL ITEMS:

BUILDING:	2658'± NE
BUILDING UNIT:	4058'± NW
HIGH OCC. BLD. UNIT:	5280'+
DES. OUTSIDE ACTIVITY AREA:	5280'+
PUBLIC ROAD:	883'± NE
ABOVE GROUND UTILITY:	822'± NE
RAILROAD:	5280'+
PROPERTY LINE:	359'± S

NAD 83 LATITUDE AND LONGITUDE

SURFACE LOCATION:		LANDING POINT:	
LATITUDE:	N40.30617°	LATITUDE:	N40.33300°
LONGITUDE:	W104.37102°	LONGITUDE:	W104.37043°
ELEV.:	4559'		
PDOP.:	1.3	BOTTOM HOLE:	
QTR/QTR:	SE4/SW4	LATITUDE:	N40.30647°
		LONGITUDE:	W104.37020°

- LEGEND**
- ◆ FOUND MONUMENT AS DESCRIBED
 - ◇ CALCULATED POSITION
 - ☀ PROPOSED WELL
 - ⊙ EXISTING WELL
 - BOTTOM HOLE



\\Survey\1702005\Drawings\Middlepark_18-15-3L.dwg