



Well: Middlepark 18-18-3L  
 Site: Section 18-T04N-R62W  
 Project: Weld County, Colorado  
 Wellbore: Original Hole  
 Design: plan2

#### Section Details

Sec	MD	Inc	Azi	TVD	+N/-S	+E/-W	Dleg	Vsect	Annotation
1	0.00	0.00	0.00	0.00	0.00	0.00	0.00	0.00	
2	2000.00	0.00	0.00	2000.00	0.00	0.00	0.00	0.00	KOP Begin 1°/100' build
3	2456.94	9.14	227.37	2455.00	-24.63	-26.76	2.00	-23.11	Begin 9.14° tangent
4	5696.34	9.14	227.37	5653.29	-373.07	-405.31	0.00	-350.06	Begin 10°/100' build
5	6657.66	90.00	359.63	6283.00	196.12	-483.92	10.00	222.60	LP Begin 90° lateral
6	16306.35	90.00	359.63	6283.00	9844.61	-545.64	0.00	9859.72	PBHL/TD 16306.34 MD/6283.00 TVD

#### DESIGN TARGET DETAILS

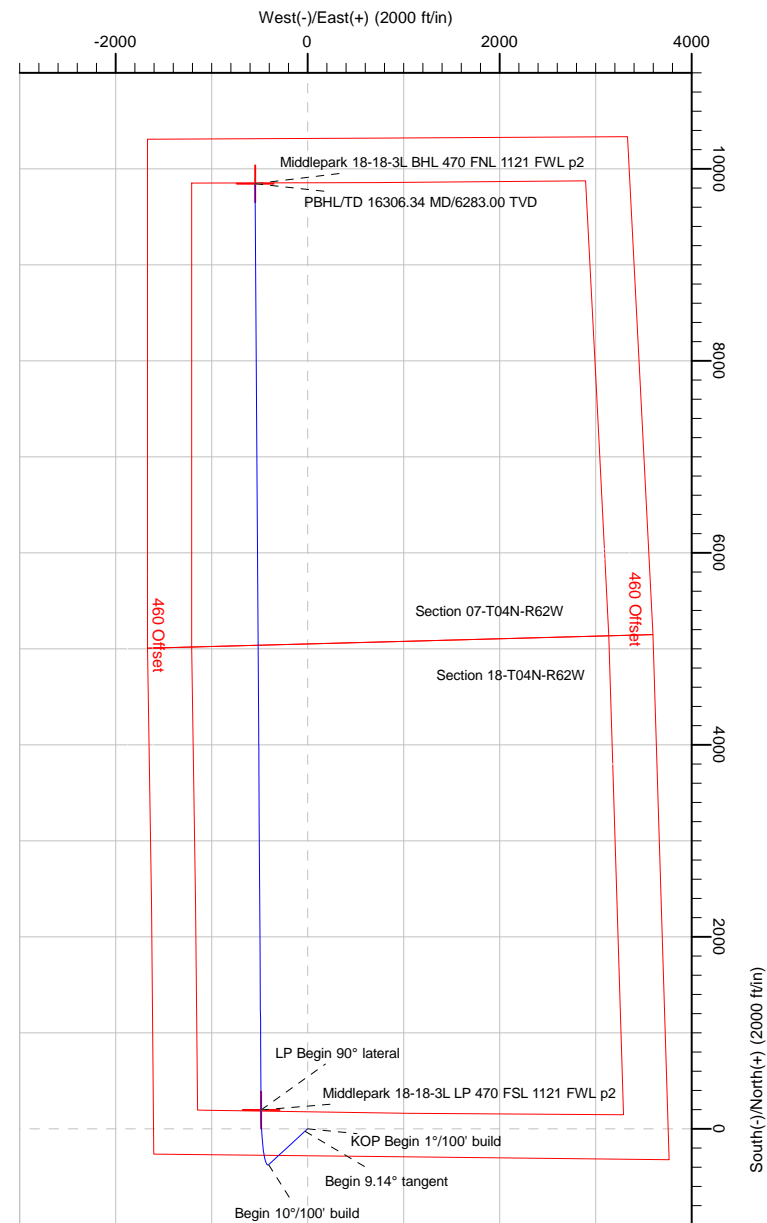
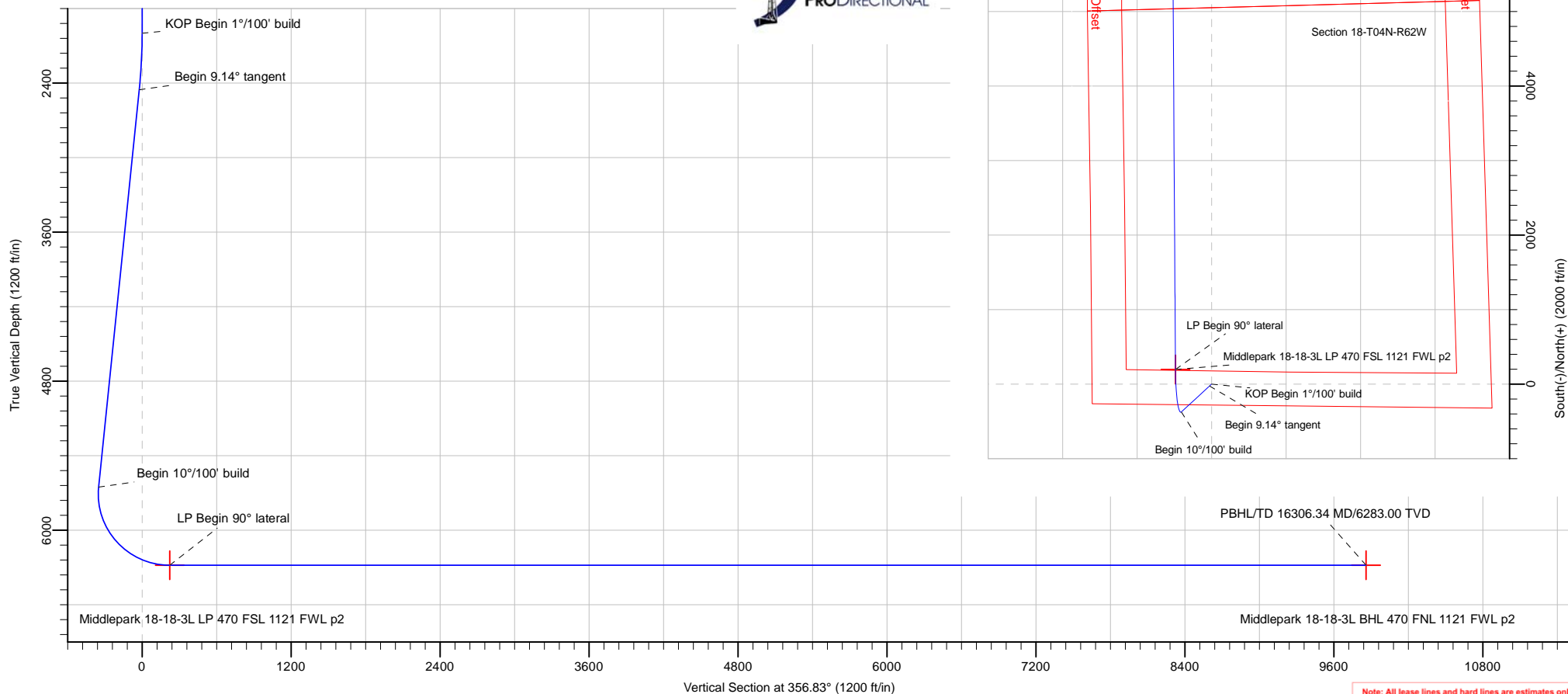
Name	TVD	+N/-S	+E/-W	Northing	Easting	Latitude	Longitude
Middlepark 18-18-3L BHL 470 FNL 1121 FWL p2	6283.00	9844.61	-545.64	14648609.39	1815221.15	40.33298451	-104.37275653
Middlepark 18-18-3L LP 470 FSL 1121 FWL p2	6283.00	196.12	-483.92	14638961.60	1815351.41	40.30649034	-104.37253445



Azimuths to True North  
 Magnetic North: 8.18°

Magnetic Field  
 Strength: 52247.3snT  
 Dip Angle: 66.90°  
 Date: 4/22/2018  
 Model: HDGM

Middlepark 18-18-3L Surf loc: 281 FSL 1603 FWL Section 18-T04N-R62W			
NAD83 Colorado - HARN Universal Transverse Mercator (US Survey Feet) Zone 13N (108 W to 102 W) RKB=4558+24 @ 4582.00ft			
Northing	Easting	Latitude	Longitude
14638768.92	1815836.71	40.30595181	-104.37079876



Note: All lease lines and hard lines are estimates only and are subject to customers approval.

<b>Database:</b>	DB_Jul2216dt_v14	<b>Local Co-ordinate Reference:</b>	Well Middlepark 18-18-3L
<b>Company:</b>	Confluence Resources	<b>TVD Reference:</b>	RKB=4558+24 @ 4582.00ft
<b>Project:</b>	Weld County, Colorado	<b>MD Reference:</b>	RKB=4558+24 @ 4582.00ft
<b>Site:</b>	Section 18-T04N-R62W	<b>North Reference:</b>	True
<b>Well:</b>	Middlepark 18-18-3L	<b>Survey Calculation Method:</b>	Minimum Curvature
<b>Wellbore:</b>	Original Hole		
<b>Design:</b>	plan2		

<b>Project</b>	Weld County, Colorado		
<b>Map System:</b>	Universal Transverse Mercator (US Survey Feet)	<b>System Datum:</b>	Mean Sea Level
<b>Geo Datum:</b>	NAD83 Colorado - HARN		
<b>Map Zone:</b>	Zone 13N (108 W to 102 W)		

<b>Site</b>	Section 18-T04N-R62W			
<b>Site Position:</b>		<b>Northing:</b>	14,641,153.41 usft	<b>Latitude:</b> 40.31252000
<b>From:</b>	Lat/Long	<b>Easting:</b>	1,814,773.97 usft	<b>Longitude:</b> -104.37455000
<b>Position Uncertainty:</b>	0.00 ft	<b>Slot Radius:</b>	13-3/16 "	<b>Grid Convergence:</b> 0.40 °

<b>Well</b>	Middlepark 18-18-3L, Surf loc: 281 FSL 1603 FWL Section 18-T04N-R62W			
<b>Well Position</b>	<b>+N/-S</b>	-2,391.94 ft	<b>Northing:</b>	14,638,768.92 usft
	<b>+E/-W</b>	1,045.87 ft	<b>Easting:</b>	1,815,836.71 usft
<b>Position Uncertainty</b>		0.00 ft	<b>Wellhead Elevation:</b>	<b>Ground Level:</b> 4,558.00 ft

<b>Wellbore</b>	Original Hole				
<b>Magnetics</b>	<b>Model Name</b>	<b>Sample Date</b>	<b>Declination (°)</b>	<b>Dip Angle (°)</b>	<b>Field Strength (nT)</b>
	HDGM	4/22/2018	8.18	66.90	52,247.30000000

<b>Design</b>	plan2			
<b>Audit Notes:</b>				
<b>Version:</b>	<b>Phase:</b>	PLAN	<b>Tie On Depth:</b>	0.00
<b>Vertical Section:</b>	<b>Depth From (TVD) (ft)</b>	<b>+N/-S (ft)</b>	<b>+E/-W (ft)</b>	<b>Direction (°)</b>
	0.00	0.00	0.00	356.83

<b>Plan Survey Tool Program</b>	<b>Date</b>	4/27/2018		
<b>Depth From (ft)</b>	<b>Depth To (ft)</b>	<b>Survey (Wellbore)</b>	<b>Tool Name</b>	<b>Remarks</b>
1	0.00	16,306.26	plan2 (Original Hole)	

<b>Plan Sections</b>										
<b>Measured Depth (ft)</b>	<b>Inclination (°)</b>	<b>Azimuth (°)</b>	<b>Vertical Depth (ft)</b>	<b>+N/-S (ft)</b>	<b>+E/-W (ft)</b>	<b>Dogleg Rate (°/100ft)</b>	<b>Build Rate (°/100ft)</b>	<b>Turn Rate (°/100ft)</b>	<b>TFO (°)</b>	<b>Target</b>
0.00	0.00	0.00	0.00	0.00	0.00	0.00	0.00	0.00	0.00	
2,000.00	0.00	0.00	2,000.00	0.00	0.00	0.00	0.00	0.00	0.00	
2,456.94	9.14	227.37	2,455.00	-24.63	-26.76	2.00	2.00	0.00	227.37	
5,696.34	9.14	227.37	5,653.29	-373.07	-405.31	0.00	0.00	0.00	0.00	
6,657.66	90.00	359.63	6,283.00	196.12	-483.92	10.00	8.41	13.76	131.90	Middlepark 18-18-3L I
16,306.35	90.00	359.63	6,283.00	9,844.61	-545.64	0.00	0.00	0.00	0.00	Middlepark 18-18-3L I

<b>Database:</b>	DB_Jul2216dt_v14	<b>Local Co-ordinate Reference:</b>	Well Middlepark 18-18-3L
<b>Company:</b>	Confluence Resources	<b>TVD Reference:</b>	RKB=4558+24 @ 4582.00ft
<b>Project:</b>	Weld County, Colorado	<b>MD Reference:</b>	RKB=4558+24 @ 4582.00ft
<b>Site:</b>	Section 18-T04N-R62W	<b>North Reference:</b>	True
<b>Well:</b>	Middlepark 18-18-3L	<b>Survey Calculation Method:</b>	Minimum Curvature
<b>Wellbore:</b>	Original Hole		
<b>Design:</b>	plan2		

Planned Survey									
Measured Depth (ft)	Inclination (°)	Azimuth (°)	Vertical Depth (ft)	+N/-S (ft)	+E/-W (ft)	Vertical Section (ft)	Dogleg Rate (°/100ft)	Build Rate (°/100ft)	Turn Rate (°/100ft)
0.00	0.00	0.00	0.00	0.00	0.00	0.00	0.00	0.00	0.00
100.00	0.00	0.00	100.00	0.00	0.00	0.00	0.00	0.00	0.00
200.00	0.00	0.00	200.00	0.00	0.00	0.00	0.00	0.00	0.00
300.00	0.00	0.00	300.00	0.00	0.00	0.00	0.00	0.00	0.00
400.00	0.00	0.00	400.00	0.00	0.00	0.00	0.00	0.00	0.00
500.00	0.00	0.00	500.00	0.00	0.00	0.00	0.00	0.00	0.00
600.00	0.00	0.00	600.00	0.00	0.00	0.00	0.00	0.00	0.00
700.00	0.00	0.00	700.00	0.00	0.00	0.00	0.00	0.00	0.00
800.00	0.00	0.00	800.00	0.00	0.00	0.00	0.00	0.00	0.00
900.00	0.00	0.00	900.00	0.00	0.00	0.00	0.00	0.00	0.00
1,000.00	0.00	0.00	1,000.00	0.00	0.00	0.00	0.00	0.00	0.00
1,100.00	0.00	0.00	1,100.00	0.00	0.00	0.00	0.00	0.00	0.00
1,200.00	0.00	0.00	1,200.00	0.00	0.00	0.00	0.00	0.00	0.00
1,300.00	0.00	0.00	1,300.00	0.00	0.00	0.00	0.00	0.00	0.00
1,400.00	0.00	0.00	1,400.00	0.00	0.00	0.00	0.00	0.00	0.00
1,500.00	0.00	0.00	1,500.00	0.00	0.00	0.00	0.00	0.00	0.00
1,600.00	0.00	0.00	1,600.00	0.00	0.00	0.00	0.00	0.00	0.00
1,700.00	0.00	0.00	1,700.00	0.00	0.00	0.00	0.00	0.00	0.00
1,800.00	0.00	0.00	1,800.00	0.00	0.00	0.00	0.00	0.00	0.00
1,900.00	0.00	0.00	1,900.00	0.00	0.00	0.00	0.00	0.00	0.00
2,000.00	0.00	0.00	2,000.00	0.00	0.00	0.00	0.00	0.00	0.00
<b>KOP Begin 1°/100' build</b>									
2,100.00	2.00	227.37	2,099.98	-1.18	-1.28	-1.11	2.00	2.00	0.00
2,200.00	4.00	227.37	2,199.84	-4.73	-5.13	-4.43	2.00	2.00	0.00
2,300.00	6.00	227.37	2,299.45	-10.63	-11.55	-9.97	2.00	2.00	0.00
2,400.00	8.00	227.37	2,398.70	-18.88	-20.51	-17.72	2.00	2.00	0.00
2,456.94	9.14	227.37	2,455.01	-24.63	-26.76	-23.11	2.00	2.00	0.00
<b>Begin 9.14° tangent</b>									
2,500.00	9.14	227.37	2,497.52	-29.26	-31.79	-27.45	0.00	0.00	0.00
2,600.00	9.14	227.37	2,596.25	-40.02	-43.47	-37.55	0.00	0.00	0.00
2,700.00	9.14	227.37	2,694.98	-50.77	-55.16	-47.64	0.00	0.00	0.00
2,800.00	9.14	227.37	2,793.71	-61.53	-66.85	-57.73	0.00	0.00	0.00
2,900.00	9.14	227.37	2,892.44	-72.28	-78.53	-67.83	0.00	0.00	0.00
3,000.00	9.14	227.37	2,991.17	-83.04	-90.22	-77.92	0.00	0.00	0.00
3,100.00	9.14	227.37	3,089.90	-93.80	-101.90	-88.01	0.00	0.00	0.00
3,200.00	9.14	227.37	3,188.63	-104.55	-113.59	-98.11	0.00	0.00	0.00
3,300.00	9.14	227.37	3,287.36	-115.31	-125.27	-108.20	0.00	0.00	0.00
3,400.00	9.14	227.37	3,386.09	-126.07	-136.96	-118.29	0.00	0.00	0.00
3,500.00	9.14	227.37	3,484.83	-136.82	-148.65	-128.39	0.00	0.00	0.00
3,600.00	9.14	227.37	3,583.56	-147.58	-160.33	-138.48	0.00	0.00	0.00
3,700.00	9.14	227.37	3,682.29	-158.33	-172.02	-148.57	0.00	0.00	0.00
3,800.00	9.14	227.37	3,781.02	-169.09	-183.70	-158.66	0.00	0.00	0.00
3,900.00	9.14	227.37	3,879.75	-179.85	-195.39	-168.76	0.00	0.00	0.00
4,000.00	9.14	227.37	3,978.48	-190.60	-207.08	-178.85	0.00	0.00	0.00
4,100.00	9.14	227.37	4,077.21	-201.36	-218.76	-188.94	0.00	0.00	0.00
4,200.00	9.14	227.37	4,175.94	-212.12	-230.45	-199.04	0.00	0.00	0.00
4,300.00	9.14	227.37	4,274.67	-222.87	-242.13	-209.13	0.00	0.00	0.00
4,400.00	9.14	227.37	4,373.40	-233.63	-253.82	-219.22	0.00	0.00	0.00
4,500.00	9.14	227.37	4,472.13	-244.38	-265.50	-229.32	0.00	0.00	0.00
4,600.00	9.14	227.37	4,570.86	-255.14	-277.19	-239.41	0.00	0.00	0.00
4,700.00	9.14	227.37	4,669.59	-265.90	-288.88	-249.50	0.00	0.00	0.00
4,800.00	9.14	227.37	4,768.32	-276.65	-300.56	-259.60	0.00	0.00	0.00
4,900.00	9.14	227.37	4,867.05	-287.41	-312.25	-269.69	0.00	0.00	0.00

<b>Database:</b>	DB_Jul2216dt_v14	<b>Local Co-ordinate Reference:</b>	Well Middlepark 18-18-3L
<b>Company:</b>	Confluence Resources	<b>TVD Reference:</b>	RKB=4558+24 @ 4582.00ft
<b>Project:</b>	Weld County, Colorado	<b>MD Reference:</b>	RKB=4558+24 @ 4582.00ft
<b>Site:</b>	Section 18-T04N-R62W	<b>North Reference:</b>	True
<b>Well:</b>	Middlepark 18-18-3L	<b>Survey Calculation Method:</b>	Minimum Curvature
<b>Wellbore:</b>	Original Hole		
<b>Design:</b>	plan2		

Planned Survey									
Measured Depth (ft)	Inclination (°)	Azimuth (°)	Vertical Depth (ft)	+N/-S (ft)	+E/-W (ft)	Vertical Section (ft)	Dogleg Rate (°/100ft)	Build Rate (°/100ft)	Turn Rate (°/100ft)
5,000.00	9.14	227.37	4,965.79	-298.17	-323.93	-279.78	0.00	0.00	0.00
5,100.00	9.14	227.37	5,064.52	-308.92	-335.62	-289.87	0.00	0.00	0.00
5,200.00	9.14	227.37	5,163.25	-319.68	-347.31	-299.97	0.00	0.00	0.00
5,300.00	9.14	227.37	5,261.98	-330.43	-358.99	-310.06	0.00	0.00	0.00
5,400.00	9.14	227.37	5,360.71	-341.19	-370.68	-320.15	0.00	0.00	0.00
5,500.00	9.14	227.37	5,459.44	-351.95	-382.36	-330.25	0.00	0.00	0.00
5,600.00	9.14	227.37	5,558.17	-362.70	-394.05	-340.34	0.00	0.00	0.00
5,696.34	9.14	227.37	5,653.29	-373.07	-405.31	-350.06	0.00	0.00	0.00
Begin 10°/100' build									
5,700.00	8.90	229.13	5,656.90	-373.45	-405.73	-350.42	9.99	-6.56	48.07
5,800.00	8.00	301.69	5,756.06	-374.86	-417.53	-351.18	10.00	-0.90	72.56
5,900.00	15.74	334.65	5,853.95	-358.91	-429.29	-334.60	10.00	7.74	32.96
6,000.00	25.11	344.92	5,947.59	-326.08	-440.65	-301.19	10.00	9.37	10.27
6,100.00	34.82	349.78	6,034.13	-277.37	-451.26	-251.97	10.00	9.71	4.86
6,200.00	44.65	352.71	6,110.95	-214.26	-460.81	-188.43	10.00	9.83	2.93
6,300.00	54.52	354.77	6,175.70	-138.67	-469.00	-112.50	10.00	9.88	2.06
6,400.00	64.43	356.37	6,226.43	-52.89	-475.59	-26.49	10.00	9.90	1.60
6,500.00	74.35	357.72	6,261.60	40.46	-480.38	66.99	10.00	9.92	1.35
6,600.00	84.27	358.95	6,280.12	138.56	-483.21	165.09	10.00	9.93	1.23
6,657.66	90.00	359.63	6,283.00	196.12	-483.92	222.60	10.00	9.93	1.19
LP Begin 90° lateral									
6,700.00	90.00	359.63	6,283.00	238.46	-484.19	264.89	0.00	0.00	0.00
6,800.00	90.00	359.63	6,283.00	338.46	-484.83	364.77	0.00	0.00	0.00
6,900.00	90.00	359.63	6,283.00	438.46	-485.47	464.65	0.00	0.00	0.00
7,000.00	90.00	359.63	6,283.00	538.46	-486.11	564.53	0.00	0.00	0.00
7,100.00	90.00	359.63	6,283.00	638.45	-486.75	664.41	0.00	0.00	0.00
7,200.00	90.00	359.63	6,283.00	738.45	-487.39	764.29	0.00	0.00	0.00
7,300.00	90.00	359.63	6,283.00	838.45	-488.03	864.17	0.00	0.00	0.00
7,400.00	90.00	359.63	6,283.00	938.45	-488.67	964.05	0.00	0.00	0.00
7,500.00	90.00	359.63	6,283.00	1,038.45	-489.31	1,063.93	0.00	0.00	0.00
7,600.00	90.00	359.63	6,283.00	1,138.44	-489.95	1,163.81	0.00	0.00	0.00
7,700.00	90.00	359.63	6,283.00	1,238.44	-490.59	1,263.69	0.00	0.00	0.00
7,800.00	90.00	359.63	6,283.00	1,338.44	-491.23	1,363.57	0.00	0.00	0.00
7,900.00	90.00	359.63	6,283.00	1,438.44	-491.87	1,463.45	0.00	0.00	0.00
8,000.00	90.00	359.63	6,283.00	1,538.44	-492.51	1,563.33	0.00	0.00	0.00
8,100.00	90.00	359.63	6,283.00	1,638.43	-493.15	1,663.21	0.00	0.00	0.00
8,200.00	90.00	359.63	6,283.00	1,738.43	-493.79	1,763.09	0.00	0.00	0.00
8,300.00	90.00	359.63	6,283.00	1,838.43	-494.42	1,862.97	0.00	0.00	0.00
8,400.00	90.00	359.63	6,283.00	1,938.43	-495.06	1,962.85	0.00	0.00	0.00
8,500.00	90.00	359.63	6,283.00	2,038.43	-495.70	2,062.73	0.00	0.00	0.00
8,600.00	90.00	359.63	6,283.00	2,138.42	-496.34	2,162.61	0.00	0.00	0.00
8,700.00	90.00	359.63	6,283.00	2,238.42	-496.98	2,262.49	0.00	0.00	0.00
8,800.00	90.00	359.63	6,283.00	2,338.42	-497.62	2,362.37	0.00	0.00	0.00
8,900.00	90.00	359.63	6,283.00	2,438.42	-498.26	2,462.25	0.00	0.00	0.00
9,000.00	90.00	359.63	6,283.00	2,538.42	-498.90	2,562.13	0.00	0.00	0.00
9,100.00	90.00	359.63	6,283.00	2,638.41	-499.54	2,662.01	0.00	0.00	0.00
9,200.00	90.00	359.63	6,283.00	2,738.41	-500.18	2,761.89	0.00	0.00	0.00
9,300.00	90.00	359.63	6,283.00	2,838.41	-500.82	2,861.77	0.00	0.00	0.00
9,400.00	90.00	359.63	6,283.00	2,938.41	-501.46	2,961.65	0.00	0.00	0.00
9,500.00	90.00	359.63	6,283.00	3,038.40	-502.10	3,061.53	0.00	0.00	0.00
9,600.00	90.00	359.63	6,283.00	3,138.40	-502.74	3,161.42	0.00	0.00	0.00
9,700.00	90.00	359.63	6,283.00	3,238.40	-503.38	3,261.30	0.00	0.00	0.00
9,800.00	90.00	359.63	6,283.00	3,338.40	-504.02	3,361.18	0.00	0.00	0.00
9,900.00	90.00	359.63	6,283.00	3,438.40	-504.66	3,461.06	0.00	0.00	0.00

<b>Database:</b>	DB_Jul2216dt_v14	<b>Local Co-ordinate Reference:</b>	Well Middlepark 18-18-3L
<b>Company:</b>	Confluence Resources	<b>TVD Reference:</b>	RKB=4558+24 @ 4582.00ft
<b>Project:</b>	Weld County, Colorado	<b>MD Reference:</b>	RKB=4558+24 @ 4582.00ft
<b>Site:</b>	Section 18-T04N-R62W	<b>North Reference:</b>	True
<b>Well:</b>	Middlepark 18-18-3L	<b>Survey Calculation Method:</b>	Minimum Curvature
<b>Wellbore:</b>	Original Hole		
<b>Design:</b>	plan2		

Planned Survey									
Measured Depth (ft)	Inclination (°)	Azimuth (°)	Vertical Depth (ft)	+N/-S (ft)	+E/-W (ft)	Vertical Section (ft)	Dogleg Rate (°/100ft)	Build Rate (°/100ft)	Turn Rate (°/100ft)
10,000.00	90.00	359.63	6,283.00	3,538.39	-505.30	3,560.94	0.00	0.00	0.00
10,100.00	90.00	359.63	6,283.00	3,638.39	-505.94	3,660.82	0.00	0.00	0.00
10,200.00	90.00	359.63	6,283.00	3,738.39	-506.58	3,760.70	0.00	0.00	0.00
10,300.00	90.00	359.63	6,283.00	3,838.39	-507.22	3,860.58	0.00	0.00	0.00
10,400.00	90.00	359.63	6,283.00	3,938.39	-507.86	3,960.46	0.00	0.00	0.00
10,500.00	90.00	359.63	6,283.00	4,038.38	-508.50	4,060.34	0.00	0.00	0.00
10,600.00	90.00	359.63	6,283.00	4,138.38	-509.14	4,160.22	0.00	0.00	0.00
10,700.00	90.00	359.63	6,283.00	4,238.38	-509.78	4,260.10	0.00	0.00	0.00
10,800.00	90.00	359.63	6,283.00	4,338.38	-510.42	4,359.98	0.00	0.00	0.00
10,900.00	90.00	359.63	6,283.00	4,438.38	-511.06	4,459.86	0.00	0.00	0.00
11,000.00	90.00	359.63	6,283.00	4,538.37	-511.70	4,559.74	0.00	0.00	0.00
11,100.00	90.00	359.63	6,283.00	4,638.37	-512.33	4,659.62	0.00	0.00	0.00
11,200.00	90.00	359.63	6,283.00	4,738.37	-512.97	4,759.50	0.00	0.00	0.00
11,300.00	90.00	359.63	6,283.00	4,838.37	-513.61	4,859.38	0.00	0.00	0.00
11,400.00	90.00	359.63	6,283.00	4,938.37	-514.25	4,959.26	0.00	0.00	0.00
11,500.00	90.00	359.63	6,283.00	5,038.36	-514.89	5,059.14	0.00	0.00	0.00
11,600.00	90.00	359.63	6,283.00	5,138.36	-515.53	5,159.02	0.00	0.00	0.00
11,700.00	90.00	359.63	6,283.00	5,238.36	-516.17	5,258.90	0.00	0.00	0.00
11,800.00	90.00	359.63	6,283.00	5,338.36	-516.81	5,358.78	0.00	0.00	0.00
11,900.00	90.00	359.63	6,283.00	5,438.36	-517.45	5,458.66	0.00	0.00	0.00
12,000.00	90.00	359.63	6,283.00	5,538.35	-518.09	5,558.54	0.00	0.00	0.00
12,100.00	90.00	359.63	6,283.00	5,638.35	-518.73	5,658.42	0.00	0.00	0.00
12,200.00	90.00	359.63	6,283.00	5,738.35	-519.37	5,758.30	0.00	0.00	0.00
12,300.00	90.00	359.63	6,283.00	5,838.35	-520.01	5,858.18	0.00	0.00	0.00
12,400.00	90.00	359.63	6,283.00	5,938.35	-520.65	5,958.06	0.00	0.00	0.00
12,500.00	90.00	359.63	6,283.00	6,038.34	-521.29	6,057.94	0.00	0.00	0.00
12,600.00	90.00	359.63	6,283.00	6,138.34	-521.93	6,157.82	0.00	0.00	0.00
12,700.00	90.00	359.63	6,283.00	6,238.34	-522.57	6,257.70	0.00	0.00	0.00
12,800.00	90.00	359.63	6,283.00	6,338.34	-523.21	6,357.58	0.00	0.00	0.00
12,900.00	90.00	359.63	6,283.00	6,438.34	-523.85	6,457.46	0.00	0.00	0.00
13,000.00	90.00	359.63	6,283.00	6,538.33	-524.49	6,557.34	0.00	0.00	0.00
13,100.00	90.00	359.63	6,283.00	6,638.33	-525.13	6,657.22	0.00	0.00	0.00
13,200.00	90.00	359.63	6,283.00	6,738.33	-525.77	6,757.10	0.00	0.00	0.00
13,300.00	90.00	359.63	6,283.00	6,838.33	-526.41	6,856.98	0.00	0.00	0.00
13,400.00	90.00	359.63	6,283.00	6,938.33	-527.05	6,956.86	0.00	0.00	0.00
13,500.00	90.00	359.63	6,283.00	7,038.32	-527.69	7,056.74	0.00	0.00	0.00
13,600.00	90.00	359.63	6,283.00	7,138.32	-528.33	7,156.62	0.00	0.00	0.00
13,700.00	90.00	359.63	6,283.00	7,238.32	-528.97	7,256.50	0.00	0.00	0.00
13,800.00	90.00	359.63	6,283.00	7,338.32	-529.61	7,356.38	0.00	0.00	0.00
13,900.00	90.00	359.63	6,283.00	7,438.31	-530.24	7,456.26	0.00	0.00	0.00
14,000.00	90.00	359.63	6,283.00	7,538.31	-530.88	7,556.14	0.00	0.00	0.00
14,100.00	90.00	359.63	6,283.00	7,638.31	-531.52	7,656.02	0.00	0.00	0.00
14,200.00	90.00	359.63	6,283.00	7,738.31	-532.16	7,755.90	0.00	0.00	0.00
14,300.00	90.00	359.63	6,283.00	7,838.31	-532.80	7,855.78	0.00	0.00	0.00
14,400.00	90.00	359.63	6,283.00	7,938.30	-533.44	7,955.66	0.00	0.00	0.00
14,500.00	90.00	359.63	6,283.00	8,038.30	-534.08	8,055.54	0.00	0.00	0.00
14,600.00	90.00	359.63	6,283.00	8,138.30	-534.72	8,155.42	0.00	0.00	0.00
14,700.00	90.00	359.63	6,283.00	8,238.30	-535.36	8,255.30	0.00	0.00	0.00
14,800.00	90.00	359.63	6,283.00	8,338.30	-536.00	8,355.18	0.00	0.00	0.00
14,900.00	90.00	359.63	6,283.00	8,438.29	-536.64	8,455.06	0.00	0.00	0.00
15,000.00	90.00	359.63	6,283.00	8,538.29	-537.28	8,554.94	0.00	0.00	0.00
15,100.00	90.00	359.63	6,283.00	8,638.29	-537.92	8,654.82	0.00	0.00	0.00
15,200.00	90.00	359.63	6,283.00	8,738.29	-538.56	8,754.70	0.00	0.00	0.00
15,300.00	90.00	359.63	6,283.00	8,838.29	-539.20	8,854.58	0.00	0.00	0.00

<b>Database:</b>	DB_Jul2216dt_v14	<b>Local Co-ordinate Reference:</b>	Well Middlepark 18-18-3L
<b>Company:</b>	Confluence Resources	<b>TVD Reference:</b>	RKB=4558+24 @ 4582.00ft
<b>Project:</b>	Weld County, Colorado	<b>MD Reference:</b>	RKB=4558+24 @ 4582.00ft
<b>Site:</b>	Section 18-T04N-R62W	<b>North Reference:</b>	True
<b>Well:</b>	Middlepark 18-18-3L	<b>Survey Calculation Method:</b>	Minimum Curvature
<b>Wellbore:</b>	Original Hole		
<b>Design:</b>	plan2		

Planned Survey									
Measured Depth (ft)	Inclination (°)	Azimuth (°)	Vertical Depth (ft)	+N/-S (ft)	+E/-W (ft)	Vertical Section (ft)	Dogleg Rate (°/100ft)	Build Rate (°/100ft)	Turn Rate (°/100ft)
15,400.00	90.00	359.63	6,283.00	8,938.28	-539.84	8,954.46	0.00	0.00	0.00
15,500.00	90.00	359.63	6,283.00	9,038.28	-540.48	9,054.34	0.00	0.00	0.00
15,600.00	90.00	359.63	6,283.00	9,138.28	-541.12	9,154.22	0.00	0.00	0.00
15,700.00	90.00	359.63	6,283.00	9,238.28	-541.76	9,254.10	0.00	0.00	0.00
15,800.00	90.00	359.63	6,283.00	9,338.28	-542.40	9,353.98	0.00	0.00	0.00
15,900.00	90.00	359.63	6,283.00	9,438.27	-543.04	9,453.86	0.00	0.00	0.00
16,000.00	90.00	359.63	6,283.00	9,538.27	-543.68	9,553.74	0.00	0.00	0.00
16,100.00	90.00	359.63	6,283.00	9,638.27	-544.32	9,653.62	0.00	0.00	0.00
16,200.00	90.00	359.63	6,283.00	9,738.27	-544.96	9,753.50	0.00	0.00	0.00
16,300.00	90.00	359.63	6,283.00	9,838.27	-545.60	9,853.38	0.00	0.00	0.00
16,306.34	90.00	359.63	6,283.00	9,844.61	-545.64	9,859.72	0.00	0.00	0.00
<b>PBHL/TD 16306.34 MD/6283.00 TVD</b>									
16,306.35	90.00	359.63	6,283.00	9,844.61	-545.64	9,859.72	0.00	0.00	0.00

Design Targets									
Target Name - hit/miss target - Shape	Dip Angle (°)	Dip Dir. (°)	TVD (ft)	+N/-S (ft)	+E/-W (ft)	Northing (usft)	Easting (usft)	Latitude	Longitude
Middlepark 18-18-3L BH - plan hits target center - Point	0.00	0.00	6,283.00	9,844.61	-545.64	14,648,609.39	1,815,221.15	40.33298450	-104.37275653
Middlepark 18-18-3L LP - plan hits target center - Point	0.00	0.00	6,283.00	196.12	-483.92	14,638,961.60	1,815,351.41	40.30649034	-104.37253446

Plan Annotations				
Measured Depth (ft)	Vertical Depth (ft)	Local Coordinates		Comment
		+N/-S (ft)	+E/-W (ft)	
2,000.00	2,000.00	0.00	0.00	KOP Begin 1°/100' build
2,456.94	2,455.01	-24.63	-26.76	Begin 9.14° tangent
5,696.34	5,653.29	-373.07	-405.31	Begin 10°/100' build
6,657.66	6,283.00	196.12	-483.92	LP Begin 90° lateral
16,306.34	6,283.00	9,844.61	-545.64	PBHL/TD 16306.34 MD/6283.00 TVD

<b>Database:</b>	DB_Jul2216dt_v14	<b>Local Co-ordinate Reference:</b>	Well Middlepark 18-18-3L
<b>Company:</b>	Confluence Resources	<b>TVD Reference:</b>	RKB=4558+24 @ 4582.00ft
<b>Project:</b>	Weld County, Colorado	<b>MD Reference:</b>	RKB=4558+24 @ 4582.00ft
<b>Site:</b>	Section 18-T04N-R62W	<b>North Reference:</b>	True
<b>Well:</b>	Middlepark 18-18-3L	<b>Survey Calculation Method:</b>	Minimum Curvature
<b>Wellbore:</b>	Original Hole		
<b>Design:</b>	plan2		

<b>Project</b>	Weld County, Colorado		
<b>Map System:</b>	Universal Transverse Mercator (US Survey Feet)	<b>System Datum:</b>	Mean Sea Level
<b>Geo Datum:</b>	NAD83 Colorado - HARN		
<b>Map Zone:</b>	Zone 13N (108 W to 102 W)		

Site		Section 18-T04N-R62W			
Site Position:		Northing:	14,641,153.41 usft	Latitude:	40.31252000
From:	Lat/Long	Easting:	1,814,773.97 usft	Longitude:	-104.37455000
Position Uncertainty:	0.00 ft	Slot Radius:	13-3/16 "	Grid Convergence:	0.40 °

Well	Middlepark 18-18-3L, Surf loc: 281 FSL 1603 FWL Section 18-T04N-R62W					
Well Position	+N/-S	0.00 ft	Northing:	14,638,768.92 usft	Latitude:	40.30595181
	+E/-W	0.00 ft	Easting:	1,815,836.71 usft	Longitude:	-104.37079877
Position Uncertainty		0.00 ft	Wellhead Elevation:		Ground Level:	4,558.00 ft

<b>Wellbore</b>	Original Hole				
<b>Magnetics</b>	<b>Model Name</b>	<b>Sample Date</b>	<b>Declination (°)</b>	<b>Dip Angle (°)</b>	<b>Field Strength (nT)</b>
	HDGM	4/22/2018	8.18	66.90	52,247.30000000

<b>Design</b>	plan2			
<b>Audit Notes:</b>				
<b>Version:</b>	<b>Phase:</b>	PLAN	<b>Tie On Depth:</b>	0.00
<b>Vertical Section:</b>	<b>Depth From (TVD) (ft)</b>	<b>+N/-S (ft)</b>	<b>+E/-W (ft)</b>	<b>Direction (°)</b>
	0.00	0.00	0.00	356.83

<b>Plan Survey Tool Program</b>	<b>Date</b>	4/27/2018		
<b>Depth From (ft)</b>	<b>Depth To (ft)</b>	<b>Survey (Wellbore)</b>	<b>Tool Name</b>	<b>Remarks</b>
1	0.00	16,306.26 plan2 (Original Hole)		

<b>Plan Sections</b>										
<b>Measured Depth (ft)</b>	<b>Inclination (°)</b>	<b>Azimuth (°)</b>	<b>Vertical Depth (ft)</b>	<b>+N/-S (ft)</b>	<b>+E/-W (ft)</b>	<b>Dogleg Rate (°/100ft)</b>	<b>Build Rate (°/100ft)</b>	<b>Turn Rate (°/100ft)</b>	<b>TFO (°)</b>	<b>Target</b>
0.00	0.00	0.00	0.00	0.00	0.00	0.00	0.00	0.00	0.00	
2,000.00	0.00	0.00	2,000.00	0.00	0.00	0.00	0.00	0.00	0.00	
2,456.94	9.14	227.37	2,455.00	-24.63	-26.76	2.00	2.00	0.00	227.37	
5,696.34	9.14	227.37	5,653.29	-373.07	-405.31	0.00	0.00	0.00	0.00	
6,657.66	90.00	359.63	6,283.00	196.12	-483.92	10.00	8.41	13.76	131.90	Middlepark 18-18-3L I
16,306.35	90.00	359.63	6,283.00	9,844.61	-545.64	0.00	0.00	0.00	0.00	Middlepark 18-18-3L I



<b>Database:</b>	DB_Jul2216dt_v14	<b>Local Co-ordinate Reference:</b>	Well Middlepark 18-18-3L
<b>Company:</b>	Confluence Resources	<b>TVD Reference:</b>	RKB=4558+24 @ 4582.00ft
<b>Project:</b>	Weld County, Colorado	<b>MD Reference:</b>	RKB=4558+24 @ 4582.00ft
<b>Site:</b>	Section 18-T04N-R62W	<b>North Reference:</b>	True
<b>Well:</b>	Middlepark 18-18-3L	<b>Survey Calculation Method:</b>	Minimum Curvature
<b>Wellbore:</b>	Original Hole		
<b>Design:</b>	plan2		

Planned Survey									
Measured Depth (ft)	Inclination (°)	Azimuth (°)	Vertical Depth (ft)	+N/-S (ft)	+E/-W (ft)	Map Northing (usft)	Map Easting (usft)	Latitude	Longitude
0.00	0.00	0.00	0.00	0.00	0.00	14,638,768.92	1,815,836.71	40.30595181	-104.37079877
100.00	0.00	0.00	100.00	0.00	0.00	14,638,768.92	1,815,836.71	40.30595181	-104.37079877
200.00	0.00	0.00	200.00	0.00	0.00	14,638,768.92	1,815,836.71	40.30595181	-104.37079877
300.00	0.00	0.00	300.00	0.00	0.00	14,638,768.92	1,815,836.71	40.30595181	-104.37079877
400.00	0.00	0.00	400.00	0.00	0.00	14,638,768.92	1,815,836.71	40.30595181	-104.37079877
500.00	0.00	0.00	500.00	0.00	0.00	14,638,768.92	1,815,836.71	40.30595181	-104.37079877
600.00	0.00	0.00	600.00	0.00	0.00	14,638,768.92	1,815,836.71	40.30595181	-104.37079877
700.00	0.00	0.00	700.00	0.00	0.00	14,638,768.92	1,815,836.71	40.30595181	-104.37079877
800.00	0.00	0.00	800.00	0.00	0.00	14,638,768.92	1,815,836.71	40.30595181	-104.37079877
900.00	0.00	0.00	900.00	0.00	0.00	14,638,768.92	1,815,836.71	40.30595181	-104.37079877
1,000.00	0.00	0.00	1,000.00	0.00	0.00	14,638,768.92	1,815,836.71	40.30595181	-104.37079877
1,100.00	0.00	0.00	1,100.00	0.00	0.00	14,638,768.92	1,815,836.71	40.30595181	-104.37079877
1,200.00	0.00	0.00	1,200.00	0.00	0.00	14,638,768.92	1,815,836.71	40.30595181	-104.37079877
1,300.00	0.00	0.00	1,300.00	0.00	0.00	14,638,768.92	1,815,836.71	40.30595181	-104.37079877
1,400.00	0.00	0.00	1,400.00	0.00	0.00	14,638,768.92	1,815,836.71	40.30595181	-104.37079877
1,500.00	0.00	0.00	1,500.00	0.00	0.00	14,638,768.92	1,815,836.71	40.30595181	-104.37079877
1,600.00	0.00	0.00	1,600.00	0.00	0.00	14,638,768.92	1,815,836.71	40.30595181	-104.37079877
1,700.00	0.00	0.00	1,700.00	0.00	0.00	14,638,768.92	1,815,836.71	40.30595181	-104.37079877
1,800.00	0.00	0.00	1,800.00	0.00	0.00	14,638,768.92	1,815,836.71	40.30595181	-104.37079877
1,900.00	0.00	0.00	1,900.00	0.00	0.00	14,638,768.92	1,815,836.71	40.30595181	-104.37079877
2,000.00	0.00	0.00	2,000.00	0.00	0.00	14,638,768.92	1,815,836.71	40.30595181	-104.37079877
<b>KOP Begin 1°/100' build</b>									
2,100.00	2.00	227.37	2,099.98	-1.18	-1.28	14,638,767.73	1,815,835.43	40.30594857	-104.37080337
2,200.00	4.00	227.37	2,199.84	-4.73	-5.13	14,638,764.15	1,815,831.61	40.30593883	-104.37081718
2,300.00	6.00	227.37	2,299.45	-10.63	-11.55	14,638,758.21	1,815,825.24	40.30592263	-104.37084018
2,400.00	8.00	227.37	2,398.70	-18.88	-20.51	14,638,749.89	1,815,816.33	40.30589996	-104.37087234
2,456.94	9.14	227.37	2,455.01	-24.63	-26.76	14,638,744.10	1,815,810.13	40.30588419	-104.37089473
<b>Begin 9.14° tangent</b>									
2,500.00	9.14	227.37	2,497.52	-29.26	-31.79	14,638,739.43	1,815,805.13	40.30587147	-104.37091278
2,600.00	9.14	227.37	2,596.25	-40.02	-43.47	14,638,728.59	1,815,793.52	40.30584193	-104.37095469
2,700.00	9.14	227.37	2,694.98	-50.77	-55.16	14,638,717.76	1,815,781.91	40.30581240	-104.37099660
2,800.00	9.14	227.37	2,793.71	-61.53	-66.85	14,638,706.92	1,815,770.30	40.30578286	-104.37103852
2,900.00	9.14	227.37	2,892.44	-72.28	-78.53	14,638,696.08	1,815,758.70	40.30575332	-104.37108043
3,000.00	9.14	227.37	2,991.17	-83.04	-90.22	14,638,685.24	1,815,747.09	40.30572379	-104.37112234
3,100.00	9.14	227.37	3,089.90	-93.80	-101.90	14,638,674.40	1,815,735.48	40.30569425	-104.37116426
3,200.00	9.14	227.37	3,188.63	-104.55	-113.59	14,638,663.56	1,815,723.87	40.30566472	-104.37120617
3,300.00	9.14	227.37	3,287.36	-115.31	-125.27	14,638,652.72	1,815,712.26	40.30563518	-104.37124808
3,400.00	9.14	227.37	3,386.09	-126.07	-136.96	14,638,641.88	1,815,700.65	40.30560564	-104.37129000
3,500.00	9.14	227.37	3,484.83	-136.82	-148.65	14,638,631.04	1,815,689.04	40.30557611	-104.37133191
3,600.00	9.14	227.37	3,583.56	-147.58	-160.33	14,638,620.20	1,815,677.43	40.30554657	-104.37137382
3,700.00	9.14	227.37	3,682.29	-158.33	-172.02	14,638,609.37	1,815,665.82	40.30551703	-104.37141574
3,800.00	9.14	227.37	3,781.02	-169.09	-183.70	14,638,598.53	1,815,654.21	40.30548750	-104.37145765
3,900.00	9.14	227.37	3,879.75	-179.85	-195.39	14,638,587.69	1,815,642.60	40.30545796	-104.37149956
4,000.00	9.14	227.37	3,978.48	-190.60	-207.08	14,638,576.85	1,815,631.00	40.30542842	-104.37154148
4,100.00	9.14	227.37	4,077.21	-201.36	-218.76	14,638,566.01	1,815,619.39	40.30539889	-104.37158339
4,200.00	9.14	227.37	4,175.94	-212.12	-230.45	14,638,555.17	1,815,607.78	40.30536935	-104.37162530
4,300.00	9.14	227.37	4,274.67	-222.87	-242.13	14,638,544.33	1,815,596.17	40.30533982	-104.37166722
4,400.00	9.14	227.37	4,373.40	-233.63	-253.82	14,638,533.49	1,815,584.56	40.30531028	-104.37170913
4,500.00	9.14	227.37	4,472.13	-244.38	-265.50	14,638,522.65	1,815,572.95	40.30528074	-104.37175104
4,600.00	9.14	227.37	4,570.86	-255.14	-277.19	14,638,511.81	1,815,561.34	40.30525121	-104.37179295
4,700.00	9.14	227.37	4,669.59	-265.90	-288.88	14,638,500.98	1,815,549.73	40.30522167	-104.37183487
4,800.00	9.14	227.37	4,768.32	-276.65	-300.56	14,638,490.14	1,815,538.12	40.30519213	-104.37187678
4,900.00	9.14	227.37	4,867.05	-287.41	-312.25	14,638,479.30	1,815,526.51	40.30516260	-104.37191869
5,000.00	9.14	227.37	4,965.79	-298.17	-323.93	14,638,468.46	1,815,514.90	40.30513306	-104.37196060

<b>Database:</b>	DB_Jul2216dt_v14	<b>Local Co-ordinate Reference:</b>	Well Middlepark 18-18-3L
<b>Company:</b>	Confluence Resources	<b>TVD Reference:</b>	RKB=4558+24 @ 4582.00ft
<b>Project:</b>	Weld County, Colorado	<b>MD Reference:</b>	RKB=4558+24 @ 4582.00ft
<b>Site:</b>	Section 18-T04N-R62W	<b>North Reference:</b>	True
<b>Well:</b>	Middlepark 18-18-3L	<b>Survey Calculation Method:</b>	Minimum Curvature
<b>Wellbore:</b>	Original Hole		
<b>Design:</b>	plan2		

Planned Survey									
Measured Depth (ft)	Inclination (°)	Azimuth (°)	Vertical Depth (ft)	+N/-S (ft)	+E/-W (ft)	Map Northing (usft)	Map Easting (usft)	Latitude	Longitude
5,100.00	9.14	227.37	5,064.52	-308.92	-335.62	14,638,457.62	1,815,503.29	40.30510352	-104.37200252
5,200.00	9.14	227.37	5,163.25	-319.68	-347.31	14,638,446.78	1,815,491.69	40.30507399	-104.37204443
5,300.00	9.14	227.37	5,261.98	-330.43	-358.99	14,638,435.94	1,815,480.08	40.30504445	-104.37208634
5,400.00	9.14	227.37	5,360.71	-341.19	-370.68	14,638,425.10	1,815,468.47	40.30501491	-104.37212825
5,500.00	9.14	227.37	5,459.44	-351.95	-382.36	14,638,414.26	1,815,456.86	40.30498538	-104.37217017
5,600.00	9.14	227.37	5,558.17	-362.70	-394.05	14,638,403.43	1,815,445.25	40.30495584	-104.37221208
5,696.34	9.14	227.37	5,653.29	-373.07	-405.31	14,638,392.98	1,815,434.07	40.30492739	-104.37225246
Begin 10°/100' build									
5,700.00	8.90	229.13	5,656.90	-373.45	-405.73	14,638,392.60	1,815,433.64	40.30492634	-104.37225399
5,800.00	8.00	301.69	5,756.06	-374.86	-417.53	14,638,391.10	1,815,421.85	40.30492246	-104.37229631
5,900.00	15.74	334.65	5,853.95	-358.91	-429.29	14,638,406.97	1,815,409.98	40.30496626	-104.37233847
6,000.00	25.11	344.92	5,947.59	-326.08	-440.65	14,638,439.72	1,815,398.39	40.30505641	-104.37237921
6,100.00	34.82	349.78	6,034.13	-277.37	-451.26	14,638,488.35	1,815,387.43	40.30519016	-104.37241729
6,200.00	44.65	352.71	6,110.95	-214.26	-460.81	14,638,551.39	1,815,377.43	40.30536345	-104.37245154
6,300.00	54.52	354.77	6,175.70	-138.67	-469.00	14,638,626.92	1,815,368.70	40.30557102	-104.37248093
6,400.00	64.43	356.37	6,226.43	-52.89	-475.59	14,638,712.65	1,815,361.51	40.30580656	-104.37250457
6,500.00	74.35	357.72	6,261.60	40.46	-480.38	14,638,805.97	1,815,356.06	40.30606291	-104.37252173
6,600.00	84.27	358.95	6,280.12	138.56	-483.21	14,638,904.04	1,815,352.53	40.30633229	-104.37253190
6,657.66	90.00	359.63	6,283.00	196.12	-483.92	14,638,961.60	1,815,351.41	40.30649034	-104.37253446
LP Begin 90° lateral									
6,700.00	90.00	359.63	6,283.00	238.46	-484.19	14,639,003.93	1,815,350.84	40.30660660	-104.37253543
6,800.00	90.00	359.63	6,283.00	338.46	-484.83	14,639,103.92	1,815,349.49	40.30688119	-104.37253773
6,900.00	90.00	359.63	6,283.00	438.46	-485.47	14,639,203.91	1,815,348.14	40.30715578	-104.37254003
7,000.00	90.00	359.63	6,283.00	538.46	-486.11	14,639,303.91	1,815,346.79	40.30743037	-104.37254234
7,100.00	90.00	359.63	6,283.00	638.45	-486.75	14,639,403.90	1,815,345.44	40.30770496	-104.37254464
7,200.00	90.00	359.63	6,283.00	738.45	-487.39	14,639,503.89	1,815,344.09	40.30797955	-104.37254694
7,300.00	90.00	359.63	6,283.00	838.45	-488.03	14,639,603.88	1,815,342.74	40.30825414	-104.37254924
7,400.00	90.00	359.63	6,283.00	938.45	-488.67	14,639,703.87	1,815,341.39	40.30852872	-104.37255154
7,500.00	90.00	359.63	6,283.00	1,038.45	-489.31	14,639,803.86	1,815,340.04	40.30880331	-104.37255384
7,600.00	90.00	359.63	6,283.00	1,138.44	-489.95	14,639,903.85	1,815,338.69	40.30907790	-104.37255614
7,700.00	90.00	359.63	6,283.00	1,238.44	-490.59	14,640,003.84	1,815,337.34	40.30935249	-104.37255845
7,800.00	90.00	359.63	6,283.00	1,338.44	-491.23	14,640,103.83	1,815,335.99	40.30962708	-104.37256075
7,900.00	90.00	359.63	6,283.00	1,438.44	-491.87	14,640,203.82	1,815,334.64	40.30990167	-104.37256305
8,000.00	90.00	359.63	6,283.00	1,538.44	-492.51	14,640,303.81	1,815,333.29	40.31017626	-104.37256535
8,100.00	90.00	359.63	6,283.00	1,638.43	-493.15	14,640,403.80	1,815,331.94	40.31045085	-104.37256765
8,200.00	90.00	359.63	6,283.00	1,738.43	-493.79	14,640,503.79	1,815,330.59	40.31072544	-104.37256995
8,300.00	90.00	359.63	6,283.00	1,838.43	-494.42	14,640,603.78	1,815,329.24	40.31100002	-104.37257225
8,400.00	90.00	359.63	6,283.00	1,938.43	-495.06	14,640,703.77	1,815,327.89	40.31127461	-104.37257456
8,500.00	90.00	359.63	6,283.00	2,038.43	-495.70	14,640,803.77	1,815,326.54	40.31154920	-104.37257686
8,600.00	90.00	359.63	6,283.00	2,138.42	-496.34	14,640,903.76	1,815,325.19	40.31182379	-104.37257916
8,700.00	90.00	359.63	6,283.00	2,238.42	-496.98	14,641,003.75	1,815,323.84	40.31209838	-104.37258146
8,800.00	90.00	359.63	6,283.00	2,338.42	-497.62	14,641,103.74	1,815,322.49	40.31237297	-104.37258376
8,900.00	90.00	359.63	6,283.00	2,438.42	-498.26	14,641,203.73	1,815,321.14	40.31264756	-104.37258606
9,000.00	90.00	359.63	6,283.00	2,538.42	-498.90	14,641,303.72	1,815,319.79	40.31292213	-104.37258836
9,100.00	90.00	359.63	6,283.00	2,638.41	-499.54	14,641,403.71	1,815,318.44	40.31319672	-104.37259067
9,200.00	90.00	359.63	6,283.00	2,738.41	-500.18	14,641,503.70	1,815,317.09	40.31347131	-104.37259297
9,300.00	90.00	359.63	6,283.00	2,838.41	-500.82	14,641,603.69	1,815,315.74	40.31374590	-104.37259527
9,400.00	90.00	359.63	6,283.00	2,938.41	-501.46	14,641,703.68	1,815,314.39	40.31402049	-104.37259757
9,500.00	90.00	359.63	6,283.00	3,038.40	-502.10	14,641,803.67	1,815,313.04	40.31429508	-104.37259987
9,600.00	90.00	359.63	6,283.00	3,138.40	-502.74	14,641,903.66	1,815,311.69	40.31456967	-104.37260217
9,700.00	90.00	359.63	6,283.00	3,238.40	-503.38	14,642,003.65	1,815,310.34	40.31484425	-104.37260447
9,800.00	90.00	359.63	6,283.00	3,338.40	-504.02	14,642,103.64	1,815,308.99	40.31511884	-104.37260678
9,900.00	90.00	359.63	6,283.00	3,438.40	-504.66	14,642,203.64	1,815,307.64	40.31539343	-104.37260908
10,000.00	90.00	359.63	6,283.00	3,538.39	-505.30	14,642,303.63	1,815,306.29	40.31566802	-104.37261138

<b>Database:</b>	DB_Jul2216dt_v14	<b>Local Co-ordinate Reference:</b>	Well Middlepark 18-18-3L
<b>Company:</b>	Confluence Resources	<b>TVD Reference:</b>	RKB=4558+24 @ 4582.00ft
<b>Project:</b>	Weld County, Colorado	<b>MD Reference:</b>	RKB=4558+24 @ 4582.00ft
<b>Site:</b>	Section 18-T04N-R62W	<b>North Reference:</b>	True
<b>Well:</b>	Middlepark 18-18-3L	<b>Survey Calculation Method:</b>	Minimum Curvature
<b>Wellbore:</b>	Original Hole		
<b>Design:</b>	plan2		

Planned Survey									
Measured Depth (ft)	Inclination (°)	Azimuth (°)	Vertical Depth (ft)	+N/-S (ft)	+E/-W (ft)	Map Northing (usft)	Map Easting (usft)	Latitude	Longitude
10,100.00	90.00	359.63	6,283.00	3,638.39	-505.94	14,642,403.62	1,815,304.94	40.31594261	-104.37261368
10,200.00	90.00	359.63	6,283.00	3,738.39	-506.58	14,642,503.61	1,815,303.59	40.31621720	-104.37261598
10,300.00	90.00	359.63	6,283.00	3,838.39	-507.22	14,642,603.60	1,815,302.24	40.31649179	-104.37261828
10,400.00	90.00	359.63	6,283.00	3,938.39	-507.86	14,642,703.59	1,815,300.89	40.31676637	-104.37262059
10,500.00	90.00	359.63	6,283.00	4,038.38	-508.50	14,642,803.58	1,815,299.54	40.31704096	-104.37262289
10,600.00	90.00	359.63	6,283.00	4,138.38	-509.14	14,642,903.57	1,815,298.19	40.31731555	-104.37262519
10,700.00	90.00	359.63	6,283.00	4,238.38	-509.78	14,643,003.56	1,815,296.84	40.31759014	-104.37262749
10,800.00	90.00	359.63	6,283.00	4,338.38	-510.42	14,643,103.55	1,815,295.49	40.31786473	-104.37262979
10,900.00	90.00	359.63	6,283.00	4,438.38	-511.06	14,643,203.54	1,815,294.14	40.31813932	-104.37263209
11,000.00	90.00	359.63	6,283.00	4,538.37	-511.70	14,643,303.53	1,815,292.79	40.31841391	-104.37263439
11,100.00	90.00	359.63	6,283.00	4,638.37	-512.33	14,643,403.52	1,815,291.44	40.31868849	-104.37263670
11,200.00	90.00	359.63	6,283.00	4,738.37	-512.97	14,643,503.51	1,815,290.09	40.31896308	-104.37263900
11,300.00	90.00	359.63	6,283.00	4,838.37	-513.61	14,643,603.50	1,815,288.74	40.31923767	-104.37264130
11,400.00	90.00	359.63	6,283.00	4,938.37	-514.25	14,643,703.50	1,815,287.39	40.31951226	-104.37264360
11,500.00	90.00	359.63	6,283.00	5,038.36	-514.89	14,643,803.49	1,815,286.04	40.31978685	-104.37264590
11,600.00	90.00	359.63	6,283.00	5,138.36	-515.53	14,643,903.48	1,815,284.69	40.32006144	-104.37264820
11,700.00	90.00	359.63	6,283.00	5,238.36	-516.17	14,644,003.47	1,815,283.34	40.32033602	-104.37265051
11,800.00	90.00	359.63	6,283.00	5,338.36	-516.81	14,644,103.46	1,815,281.99	40.32061061	-104.37265281
11,900.00	90.00	359.63	6,283.00	5,438.36	-517.45	14,644,203.45	1,815,280.64	40.32088520	-104.37265511
12,000.00	90.00	359.63	6,283.00	5,538.35	-518.09	14,644,303.44	1,815,279.29	40.32115979	-104.37265741
12,100.00	90.00	359.63	6,283.00	5,638.35	-518.73	14,644,403.43	1,815,277.94	40.32143438	-104.37265971
12,200.00	90.00	359.63	6,283.00	5,738.35	-519.37	14,644,503.42	1,815,276.59	40.32170896	-104.37266201
12,300.00	90.00	359.63	6,283.00	5,838.35	-520.01	14,644,603.41	1,815,275.24	40.32198355	-104.37266432
12,400.00	90.00	359.63	6,283.00	5,938.35	-520.65	14,644,703.40	1,815,273.89	40.32225814	-104.37266662
12,500.00	90.00	359.63	6,283.00	6,038.34	-521.29	14,644,803.39	1,815,272.54	40.32253273	-104.37266892
12,600.00	90.00	359.63	6,283.00	6,138.34	-521.93	14,644,903.38	1,815,271.19	40.32280732	-104.37267122
12,700.00	90.00	359.63	6,283.00	6,238.34	-522.57	14,645,003.37	1,815,269.84	40.32308191	-104.37267352
12,800.00	90.00	359.63	6,283.00	6,338.34	-523.21	14,645,103.37	1,815,268.49	40.32335649	-104.37267582
12,900.00	90.00	359.63	6,283.00	6,438.34	-523.85	14,645,203.36	1,815,267.14	40.32363108	-104.37267812
13,000.00	90.00	359.63	6,283.00	6,538.33	-524.49	14,645,303.35	1,815,265.79	40.32390567	-104.37268043
13,100.00	90.00	359.63	6,283.00	6,638.33	-525.13	14,645,403.34	1,815,264.44	40.32418026	-104.37268273
13,200.00	90.00	359.63	6,283.00	6,738.33	-525.77	14,645,503.33	1,815,263.09	40.32445485	-104.37268503
13,300.00	90.00	359.63	6,283.00	6,838.33	-526.41	14,645,603.32	1,815,261.74	40.32472943	-104.37268733
13,400.00	90.00	359.63	6,283.00	6,938.33	-527.05	14,645,703.31	1,815,260.39	40.32500402	-104.37268963
13,500.00	90.00	359.63	6,283.00	7,038.32	-527.69	14,645,803.30	1,815,259.04	40.32527861	-104.37269193
13,600.00	90.00	359.63	6,283.00	7,138.32	-528.33	14,645,903.29	1,815,257.69	40.32555320	-104.37269424
13,700.00	90.00	359.63	6,283.00	7,238.32	-528.97	14,646,003.28	1,815,256.34	40.32582779	-104.37269654
13,800.00	90.00	359.63	6,283.00	7,338.32	-529.61	14,646,103.27	1,815,254.99	40.32610237	-104.37269884
13,900.00	90.00	359.63	6,283.00	7,438.31	-530.24	14,646,203.26	1,815,253.64	40.32637696	-104.37270114
14,000.00	90.00	359.63	6,283.00	7,538.31	-530.88	14,646,303.25	1,815,252.29	40.32665155	-104.37270344
14,100.00	90.00	359.63	6,283.00	7,638.31	-531.52	14,646,403.24	1,815,250.94	40.32692614	-104.37270574
14,200.00	90.00	359.63	6,283.00	7,738.31	-532.16	14,646,503.23	1,815,249.59	40.32720073	-104.37270805
14,300.00	90.00	359.63	6,283.00	7,838.31	-532.80	14,646,603.23	1,815,248.24	40.32747531	-104.37271035
14,400.00	90.00	359.63	6,283.00	7,938.30	-533.44	14,646,703.22	1,815,246.89	40.32774990	-104.37271265
14,500.00	90.00	359.63	6,283.00	8,038.30	-534.08	14,646,803.21	1,815,245.54	40.32802449	-104.37271495
14,600.00	90.00	359.63	6,283.00	8,138.30	-534.72	14,646,903.20	1,815,244.19	40.32829908	-104.37271725
14,700.00	90.00	359.63	6,283.00	8,238.30	-535.36	14,647,003.19	1,815,242.84	40.32857367	-104.37271956
14,800.00	90.00	359.63	6,283.00	8,338.30	-536.00	14,647,103.18	1,815,241.49	40.32884825	-104.37272186
14,900.00	90.00	359.63	6,283.00	8,438.29	-536.64	14,647,203.17	1,815,240.14	40.32912284	-104.37272416
15,000.00	90.00	359.63	6,283.00	8,538.29	-537.28	14,647,303.16	1,815,238.79	40.32939743	-104.37272646
15,100.00	90.00	359.63	6,283.00	8,638.29	-537.92	14,647,403.15	1,815,237.44	40.32967202	-104.37272876
15,200.00	90.00	359.63	6,283.00	8,738.29	-538.56	14,647,503.14	1,815,236.09	40.32994661	-104.37273106
15,300.00	90.00	359.63	6,283.00	8,838.29	-539.20	14,647,603.13	1,815,234.74	40.33022119	-104.37273337
15,400.00	90.00	359.63	6,283.00	8,938.28	-539.84	14,647,703.12	1,815,233.39	40.33049578	-104.37273567
15,500.00	90.00	359.63	6,283.00	9,038.28	-540.48	14,647,803.11	1,815,232.04	40.33077037	-104.37273797

<b>Database:</b>	DB_Jul2216dt_v14	<b>Local Co-ordinate Reference:</b>	Well Middlepark 18-18-3L
<b>Company:</b>	Confluence Resources	<b>TVD Reference:</b>	RKB=4558+24 @ 4582.00ft
<b>Project:</b>	Weld County, Colorado	<b>MD Reference:</b>	RKB=4558+24 @ 4582.00ft
<b>Site:</b>	Section 18-T04N-R62W	<b>North Reference:</b>	True
<b>Well:</b>	Middlepark 18-18-3L	<b>Survey Calculation Method:</b>	Minimum Curvature
<b>Wellbore:</b>	Original Hole		
<b>Design:</b>	plan2		

Planned Survey									
Measured Depth (ft)	Inclination (°)	Azimuth (°)	Vertical Depth (ft)	+N/-S (ft)	+E/-W (ft)	Map Northing (usft)	Map Easting (usft)	Latitude	Longitude
15,600.00	90.00	359.63	6,283.00	9,138.28	-541.12	14,647,903.10	1,815,230.69	40.33104496	-104.37274027
15,700.00	90.00	359.63	6,283.00	9,238.28	-541.76	14,648,003.10	1,815,229.34	40.33131955	-104.37274257
15,800.00	90.00	359.63	6,283.00	9,338.28	-542.40	14,648,103.09	1,815,227.99	40.33159413	-104.37274487
15,900.00	90.00	359.63	6,283.00	9,438.27	-543.04	14,648,203.08	1,815,226.64	40.33186872	-104.37274718
16,000.00	90.00	359.63	6,283.00	9,538.27	-543.68	14,648,303.07	1,815,225.29	40.33214331	-104.37274948
16,100.00	90.00	359.63	6,283.00	9,638.27	-544.32	14,648,403.06	1,815,223.94	40.33241790	-104.37275178
16,200.00	90.00	359.63	6,283.00	9,738.27	-544.96	14,648,503.05	1,815,222.59	40.33269248	-104.37275408
16,300.00	90.00	359.63	6,283.00	9,838.27	-545.60	14,648,603.04	1,815,221.24	40.33296707	-104.37275638
16,306.34	90.00	359.63	6,283.00	9,844.61	-545.64	14,648,609.38	1,815,221.15	40.33298448	-104.37275653
<b>PBHL/TD 16306.34 MD/6283.00 TVD</b>									
16,306.35	90.00	359.63	6,283.00	9,844.61	-545.64	14,648,609.39	1,815,221.15	40.33298450	-104.37275653

Design Targets									
Target Name - hit/miss target - Shape	Dip Angle (°)	Dip Dir. (°)	TVD (ft)	+N/-S (ft)	+E/-W (ft)	Northing (usft)	Easting (usft)	Latitude	Longitude
Middlepark 18-18-3L BH - plan hits target center - Point	0.00	0.00	6,283.00	9,844.61	-545.64	14,648,609.39	1,815,221.15	40.33298450	-104.37275653
Middlepark 18-18-3L LP - plan hits target center - Point	0.00	0.00	6,283.00	196.12	-483.92	14,638,961.60	1,815,351.41	40.30649034	-104.37253446

Plan Annotations				
Measured Depth (ft)	Vertical Depth (ft)	Local Coordinates		Comment
		+N/-S (ft)	+E/-W (ft)	
2,000.00	2,000.00	0.00	0.00	KOP Begin 1°/100' build
2,456.94	2,455.01	-24.63	-26.76	Begin 9.14° tangent
5,696.34	5,653.29	-373.07	-405.31	Begin 10°/100' build
6,657.66	6,283.00	196.12	-483.92	LP Begin 90° lateral
16,306.34	6,283.00	9,844.61	-545.64	PBHL/TD 16306.34 MD/6283.00 TVD