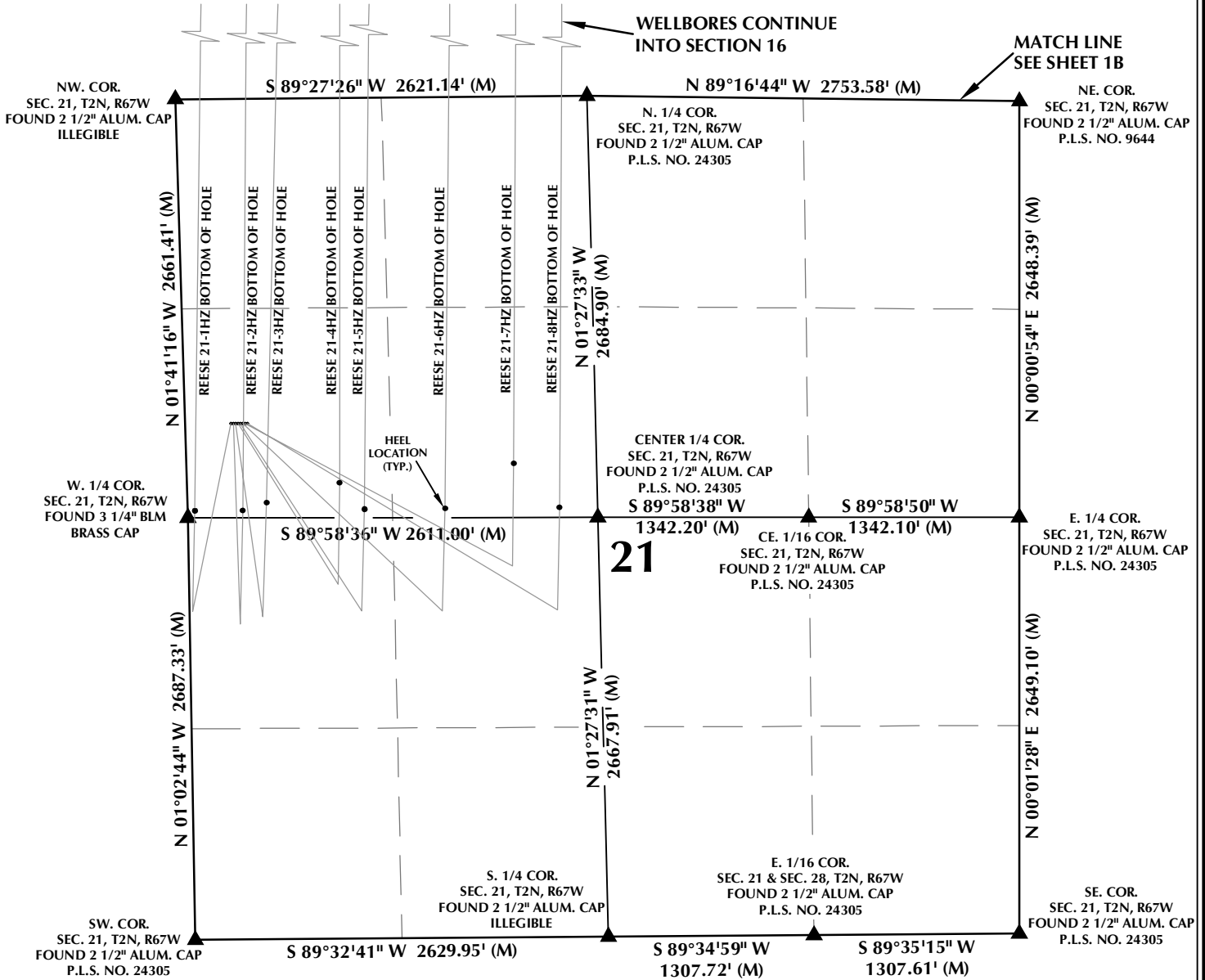


MULTI-WELL PLAN SECTION 21, T2N, R67W

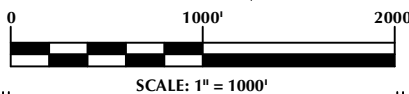


WELL NOTES:

- | | |
|--|---|
| <p>REESE 21-1HZ
SURFACE: 2064' FNL, 292' FWL, SEC. 21
BOTTOM HOLE: 52' FNL, 69' FWL, SEC. 16</p> <p>REESE 21-2HZ
SURFACE: 2064' FNL, 307' FWL, SEC. 21
BOTTOM HOLE: 53' FNL, 337' FWL, SEC. 16</p> <p>REESE 21-3HZ
SURFACE: 2065' FNL, 322' FWL, SEC. 21
BOTTOM HOLE: 53' FNL, 607' FWL, SEC. 16</p> <p>REESE 21-4HZ
SURFACE: 2065' FNL, 337' FWL, SEC. 21
BOTTOM HOLE: 52' FNL, 897' FWL, SEC. 16</p> <p>REESE 21-5HZ
SURFACE: 2065' FNL, 352' FWL, SEC. 21
BOTTOM HOLE: 52' FNL, 1124' FWL, SEC. 16</p> | <p>REESE 21-6HZ
SURFACE: 2065' FNL, 367' FWL, SEC. 21
BOTTOM HOLE: 53' FNL, 1641' FWL, SEC. 16</p> <p>REESE 21-7HZ
SURFACE: 2065' FNL, 382' FWL, SEC. 21
BOTTOM HOLE: 52' FNL, 2037' FWL, SEC. 16</p> <p>REESE 21-8HZ
SURFACE: 2065' FNL, 397' FWL, SEC. 21
BOTTOM HOLE: 52' FNL, 2337' FWL, SEC. 16</p> |
|--|---|

NOTES:

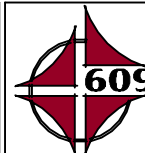
- ▲ INDICATES SECTION CORNER.
 - ⊙ INDICATES CALCULATED CORNER.
 - BASIS OF BEARING DERIVED FROM COLORADO COORDINATE SYSTEM OF 1983 NORTH ZONE.
 - ALL MEASURED DISTANCES ARE GRID.
- COMBINED SCALE FACTOR: .99972306 CALCULATED FROM THE N. 1/4 CORNER OF SECTION 21, T2N, R67W.
- WELL FOOTAGES ARE MEASURED AT RIGHT ANGLES TO THE SECTION LINES.



WELL PAD - REESE 22-21HZ

MULTI-WELL PLAN
REESE 21-1HZ, REESE 21-2HZ,
REESE 21-3HZ, REESE 21-4HZ,
REESE 21-5HZ, REESE 21-6HZ,
REESE 21-7HZ & REESE 21-8HZ
LOCATED IN SECTIONS 16 & 21
T2N, R67W, 6TH P.M.
WELD COUNTY, COLORADO

**Kerr-McGee Oil &
Gas Onshore L.P.**
1099 18th Street
Denver, Colorado 80202



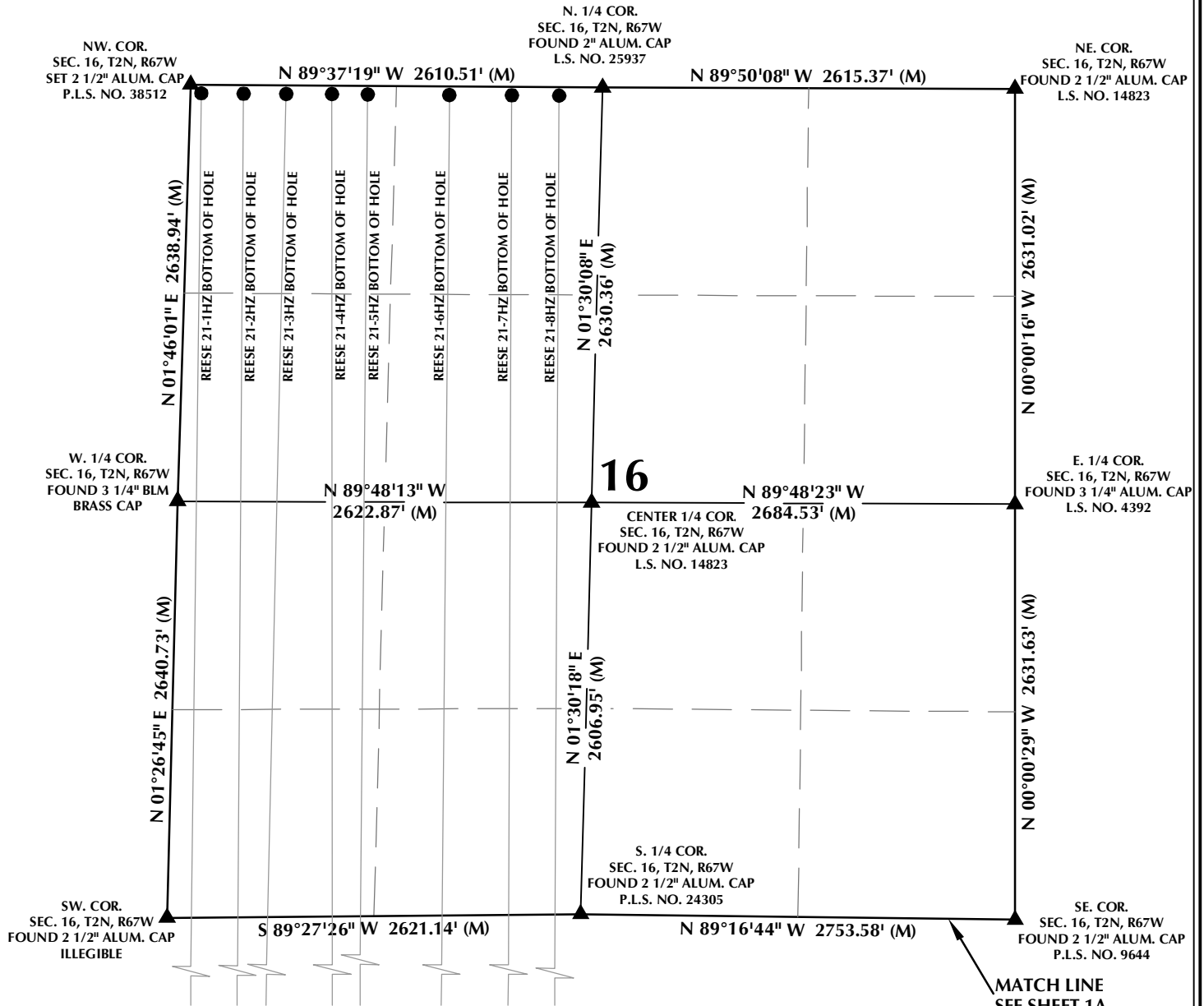
CONSULTING, LLC

SHERIDAN OFFICE 1095 Saberton Avenue
Sheridan, Wyoming 82801
Phone 307-674-0609

LOVELAND OFFICE 1635 Foxtrail Drive, Suite 204
Loveland, Colorado 80538
Phone 970-776-4331

DRAFTED BY: LMO	CHECKED BY: RKF	SHEET NO: 1A 1A OF 1
DATE DRAFTED: 1/31/18	DATE SURVEYED: 11/17/17	
REVISED:	FILE NAME: 13-89	

MULTI-WELL PLAN SECTION 16, T2N, R67W



WELL NOTES:

- | | |
|--|---|
| <p>REESE 21-1HZ
SURFACE: 2064' FNL, 292' FWL, SEC. 21
BOTTOM HOLE: 52' FNL, 69' FWL, SEC. 16</p> <p>REESE 21-2HZ
SURFACE: 2064' FNL, 307' FWL, SEC. 21
BOTTOM HOLE: 53' FNL, 337' FWL, SEC. 16</p> <p>REESE 21-3HZ
SURFACE: 2065' FNL, 322' FWL, SEC. 21
BOTTOM HOLE: 53' FNL, 607' FWL, SEC. 16</p> <p>REESE 21-4HZ
SURFACE: 2065' FNL, 337' FWL, SEC. 21
BOTTOM HOLE: 52' FNL, 897' FWL, SEC. 16</p> <p>REESE 21-5HZ
SURFACE: 2065' FNL, 352' FWL, SEC. 21
BOTTOM HOLE: 52' FNL, 1124' FWL, SEC. 16</p> | <p>REESE 21-6HZ
SURFACE: 2065' FNL, 367' FWL, SEC. 21
BOTTOM HOLE: 53' FNL, 1641' FWL, SEC. 16</p> <p>REESE 21-7HZ
SURFACE: 2065' FNL, 382' FWL, SEC. 21
BOTTOM HOLE: 52' FNL, 2037' FWL, SEC. 16</p> <p>REESE 21-8HZ
SURFACE: 2065' FNL, 397' FWL, SEC. 21
BOTTOM HOLE: 52' FNL, 2337' FWL, SEC. 16</p> |
|--|---|

NOTES:

- ▲ INDICATES SECTION CORNER.
- INDICATES CALCULATED CORNER.
- BASIS OF BEARING DERIVED FROM COLORADO COORDINATE SYSTEM OF 1983 NORTH ZONE.
- ALL MEASURED DISTANCES ARE GRID.
COMBINED SCALE FACTOR: .99972306 CALCULATED FROM THE N. 1/4 CORNER OF SECTION 21, T2N, R67W.
- WELL FOOTAGES ARE MEASURED AT RIGHT ANGLES TO THE SECTION LINES.

WELL PAD - REESE 22-21HZ

MULTI-WELL PLAN
REESE 21-1HZ, REESE 21-2HZ,
REESE 21-3HZ, REESE 21-4HZ,
REESE 21-5HZ, REESE 21-6HZ,
REESE 21-7HZ & REESE 21-8HZ
LOCATED IN SECTIONS 16 & 21
T2N, R67W, 6TH P.M.
WELD COUNTY, COLORADO

**Kerr-McGee Oil &
Gas Onshore L.P.**
1099 18th Street
Denver, Colorado 80202



CONSULTING, LLC

SHERIDAN OFFICE 1095 Saberton Avenue Sheridan, Wyoming 82801 Phone 307-674-0609
LOVELAND OFFICE 1635 Foxtrail Drive, Suite 204 Loveland, Colorado 80538 Phone 970-776-4331

DRAFTED BY: LMO	CHECKED BY: RKF	SHEET NO: 1B 1B OF 1
DATE DRAFTED: 1/31/18	DATE SURVEYED: 11/17/17	
REVISED:	FILE NAME: 13-89	